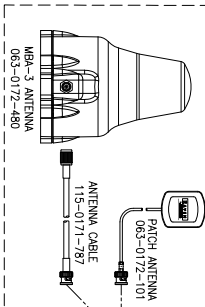


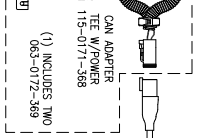
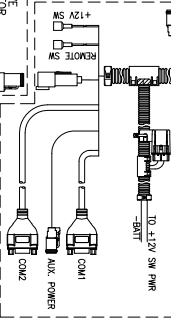
ENVIZIO PRO WITH SWITCH PRO TO SCS 440/450 CABLED SYSTEMS WITH CAN INJECTION

103-0001-014 OPTIONAL RAW MOUNT
 103-0001-015 COMPONENTS NEEDED
 103-0001-016 FOR REMOTE MOUNTING
 OF SWITCHPRO.

117-0171-126: EPRO KIT W/PATCH ANTENNA
 117-0171-137: EPRO KIT W/HELIX ANTENNA



INCLUDES ENVIZIO PRO MOUNTING BRACKET 107-0171-884
 INCLUDES POWER EXTENSION CABLE 115-0171-810



PRESSURE SENSOR CABLES
 6: 115-0171-235
 12: 115-0171-262
 24: 115-0171-292
 44: 115-0171-296

PRESSURE SENSOR CABLES
 10: 115-0171-182
 3: 115-0171-183
 30: 115-0171-176

RADAR POWER CABLE
 12: 115-0159-539

SPEED EXTENSION CABLES
 10: 115-0171-262
 12: 115-0159-032
 24: 115-0159-018
 29: 115-0171-241
 34: 115-0171-225

EXTENSION CABLES
 12: 115-0159-856
 24: 115-0159-857

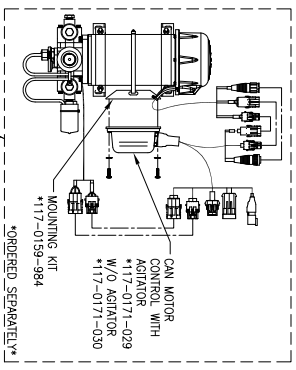
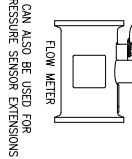
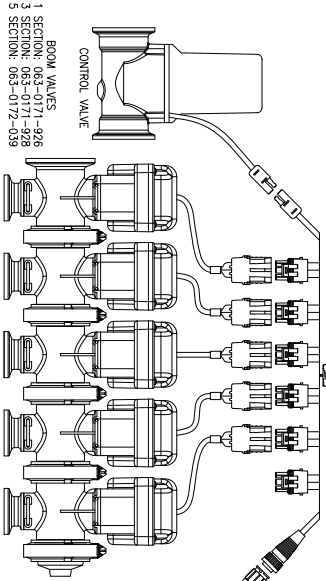
RADAR (RADAR ONLY): 063-0172-143
 RADAR (KIT WITH POWER CABLE): 117-0159-822
 ** WIDE VARIETY OF WHEEL, DRIVE, SPEEDOMETER AND RADAR ADAPTER CABLING. CONSULT RAVEN SALES REPRESENTATIVE FOR PART NUMBERS **

** OPTIONAL CONSOLE, FLOW AND EXTENSION CABLING AVAILABLE. CONSULT A RAVEN SALES REPRESENTATIVE FOR PART NUMBERS **

FLOW CABLES
 6: 115-0171-986
 12: 115-0171-129

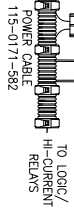
FLOW EXTENSION CABLES
 6: 115-0159-019*
 12: 115-0159-017*
 24: 115-0159-019*
 36.5: 115-0171-544*

* CAN ALSO BE USED FOR PRESSURE SENSOR EXTENSIONS



CAN CABLE WITH TIE
 4: 115-0171-364
 6: 115-0171-326
 12: 115-0171-328
 24: 115-0171-363

PASSIVE TERMINATOR
 063-0172-369 (1)



MODULE 24 GAL (5-200 OZ/MIN)
 063-0172-511
 MODULE 24 GAL (1-40 OZ/MIN)
 063-0172-512

ECO NO.	PROD. MGR.	SERV. MGR.	PROD. CHAMP.	ENG. LAAT	DRAFT. MAP	REV. A	DRAWING NO.
ET3261	JB	TAC	EM	LAAT	MAP	A	054-2040-005