

SmarTrax, Case IH Patriot 2250, Non-Steer Ready, MY17 and Newer Installation Manual

Manual No. 016-5032-037 Rev. A 12/16 E28539

Disclaimer

While every effort has been made to ensure the accuracy of this document, Raven Industries assumes no responsibility for omissions and errors. Nor is any liability assumed for damages resulting from the use of information contained herein.

Raven Industries shall not be responsible or liable for incidental or consequential damages or a loss of anticipated benefits or profits, work stoppage or loss, or impairment of data arising out of the use, or inability to use, this system or any of its components. Raven Industries shall not be held responsible for any modifications or repairs made outside our facilities, nor damages resulting from inadequate maintenance of this system.

As with all wireless and satellite signals, several factors may affect the availability and accuracy of wireless and satellite navigation and correction services (e.g. GPS, GNSS, SBAS, etc.). Therefore, Raven Industries cannot guarantee the accuracy, integrity, continuity, or availability of these services and cannot guarantee the ability to use Raven systems, or products used as components of systems, which rely upon the reception of these signals or availability of these services. Raven Industries accepts no responsibility for the use of any of these signals or services for other than the stated purpose.

Chapter 1	Important Safety Information	1
	Hydraulic Safety	2
	Electrical Safety	2
	Instructions for Wire Routing	2
	Instructions for Hose Routing	4
Chapter 2	Introduction	7
	Preparing for Installation	7
	Recommendations	7
	Point of Reference	8
	Updates	8
	Kit Contents	9
Chapter 3	Hydraulic System Installation	13
	Install Fittings in the SmarTrax Valve	14
	Install Fittings on the Flow Switch	14
	Mount the SmarTrax Valve	15
	Install the Left and Right Steering Hoses	16
	Install the Pressure Hose	19
	Install the Tank Hose	19
	Hydraulic Diagram	20
Chapter 4	Cab Component Installation	23
	Install the SmarTrax Node	23
	Mount the SmarTrax Node	23
	Node Mounting Locations	24
	Install the Foot Switch	25
	Install the Node Harness	25
	Install the Valve Harness	27
Chapter 5	Startup Procedures	33
	Verify the SmarTrax System Installation	33
	Calibrate the SmarTrax System	34

CHAPTER

1

IMPORTANT SAFETY INFORMATION

NOTICE

Read this manual and the operation and safety instructions included with your implement and/or controller carefully before installing the SmarTrax™ system.

- Follow all safety information presented within this manual.
- If you require assistance with any portion of the installation or service of your Raven equipment, contact your local Raven dealer for support.
- Follow all safety labels affixed to the SmarTrax system components. Be sure to keep safety labels in good condition and replace any missing or damaged labels. To obtain replacements for missing or damaged safety labels, contact your local Raven dealer.

When operating the machine after installing SmarTrax, observe the following safety measures:

- Be alert and aware of surroundings.
- Do not operate SmarTrax or any agricultural equipment while under the influence of alcohol or an illegal substance.
- Remain in the operator's position in the machine at all times when SmarTrax is engaged.
- Disable SmarTrax when exiting the operator's seat and machine.
- Do not drive the machine with SmarTrax enabled on any public road.
- Determine and remain a safe working distance from other individuals. The operator is responsible for disabling SmarTrax when the safe working distance has diminished.
- Ensure SmarTrax is disabled prior to starting any maintenance work on SmarTrax or the machine.

WARNING

- When starting the machine for the first time after installing SmarTrax, be sure that all persons stand clear in case a hose has not been properly tightened.
- The machine must remain stationary and switched off during SmarTrax installation or maintenance.

CAUTION

HYDRAULIC SAFETY

- Raven Industries recommends that appropriate protective equipment be worn at all times when working on the hydraulic system.
- Never attempt to open or work on a hydraulic system with the equipment running. Care should always be taken when opening a system that has been previously pressurized.
- When disconnecting the hydraulic hoses or purging is required, be aware that the hydraulic fluid may be extremely hot and under high pressure. Caution must be exercised.
- Any work performed on the hydraulic system must be done in accordance with the machine manufacturer's approved maintenance instructions.
- When installing SmarTrax hydraulics or performing diagnostics, maintenance, or routine service, ensure that precautions are taken to prevent any foreign material or contaminants from being introduced into the machine's hydraulic system. Objects or materials that are able to bypass the machine's hydraulic filtration system will reduce performance and possibly damage the SmarTrax valve.

ELECTRICAL SAFETY

- Always verify that the power leads are connected to the correct polarity as marked. Reversing the power leads could cause severe damage to the equipment.
- Ensure that the power cable is the last cable to be connected.

INSTRUCTIONS FOR WIRE ROUTING

The word "harness" is used to mean all electrical leads and cables, bundled and unbundled. When installing harness, secure it at least every 30 cm (12in) to the frame. Follow existing harness as much as possible and use these guidelines:

Harness should not contact or be attached to:

- Lines and hoses with high vibration forces or pressure spikes
- Lines and hoses carrying hot fluids beyond harness component specifications

Avoid contact with any sharp edge or abrading surfaces such as, but not limited to:

- Sheared or flame cut edges
- Edges of machined surfaces
- Fastener threads or cap screw heads
- Ends of adjustable hose clamps
- Wire exiting conduit without protection, either ends or side of conduit
- Hose and tube fittings

Routing should not allow harnesses to:

- Hang below the unit
- Have the potential to become damaged due to exposure to the exterior environment. (i.e. tree limbs, debris, attachments)
- Be placed in areas of or in contact with machine components which develop temperatures higher than the temperature rating of harness components
- Wiring should be protected or shielded if it needs to route near hot temperatures beyond harness component specifications

Harnessing should not have sharp bends

Allow sufficient clearance from machine component operational zones such as:

- Drive shafts, universal joints and hitches (i.e. 3-point hitch)
- Pulleys, gears, sprockets
- Deflection and backlash of belts and chains
- Adjustment zones of adjustable brackets
- Changes of position in steering and suspension systems
- Moving linkages, cylinders, articulation joints, attachments
- Ground engaging components

For harness sections that move during machine operation:

- Allow sufficient length for free movement without interference to prevent: pulling, pinching, catching or rubbing, especially in articulation and pivot points
- Clamp harnesses securely to force controlled movement to occur in the desired harness section
- Avoid sharp twisting or flexing of harnesses in short distances
- Connectors and splices should not be located in harness sections that move

Protect harnesses from:

- Foreign objects such as rocks that may fall or be thrown by the unit
- Buildup of dirt, mud, snow, ice, submersion in water and oil
- Tree limbs, brush and debris
- Damage where service personnel or operators might step or use as a grab bar
- Damage when passing through metal structures

IMPORTANT: Avoid directly spraying electrical components and connections with high pressure water. High pressure water sprays can penetrate seals and cause electrical components to corrode or otherwise become damaged. When performing maintenance:

- Inspect all electrical components and connections for damage or corrosion. Repair or replace components, connections, or cable as necessary.
- Ensure connections are clean, dry, and not damaged. Repair or replace components, connections, or cable as necessary.
- Clean components or connections using low pressure water, pressurized air, or an aerosol electrical component cleaning agent.
- Remove visible surface water from components, connections, or seals using pressurized air or an aerosol electrical component cleaning agent. allow components to dry completely before reconnecting cables.

INSTRUCTIONS FOR HOSE ROUTING

The word "hose" is used to mean all flexible fluid carrying components. Follow existing hoses as much as possible and use these guidelines:

Hoses should not contact or be attached to:

- Components with high vibration forces
- Components carrying hot fluids beyond component specifications

Avoid contact with any sharp edge or abrading surfaces such as, but not limited to:

- Sheared or flame cut edges
- Edges of machined surfaces
- Fastener threads or cap screw heads
- Ends of adjustable hose clamps

Routing should not allow hoses to:

- Hang below the unit
- Have the potential to become damaged due to exposure to the exterior environment. (i.e. tree limbs, debris, attachments)
- Be placed in areas of or in contact with machine components which develop temperatures higher than the temperature rating of hose components
- Hoses should be protected or shielded if it needs to route near hot temperatures beyond hose component specifications

Hoses should not have sharp bends

Allow sufficient clearance from machine component operational zones such as:

- Drive shafts, universal joints and hitches (i.e. 3-point hitch)
- Pulleys, gears, sprockets
- Deflection and backlash of belts and chains
- Adjustment zones of adjustable brackets
- Changes of position in steering and suspension systems
- Moving linkages, cylinders, articulation joints, attachments
- Ground engaging components

For hose sections that move during machine operation:

- Allow sufficient length for free movement without interference to prevent: pulling, pinching, catching or rubbing, especially in articulation and pivot points
- Clamp hoses securely to force controlled movement to occur in the desired hose section
- Avoid sharp twisting or flexing of hoses in short distances

Protect hoses from:

- Foreign objects such as rocks that may fall or be thrown by the unit
- Buildup of dirt, mud, snow, ice, submersion in water and oil
- Tree limbs, brush and debris
- Damage where service personnel or operators might step or use as a grab bar
- Damage when passing through metal structures

- High pressure wash
-

CHAPTER

INTRODUCTION

2

This manual applies to the following machines:

MAKE: Case IH

MODEL: Patriot 2250 MY17 and Newer

FIGURE 1. Case IH Patriot 2250



PREPARING FOR INSTALLATION

Before installing the SmarTrax system, park the machine where the ground is level, clean, and dry. Turn off the machine and leave it turned off for the duration of the installation process. Bleed pressure from the hydraulic system by loosening the hydraulic fittings slowly, where applicable.

During the installation process, follow good safety practices. Be sure to carefully read the instructions in this manual as you complete the installation process.

RECOMMENDATIONS

Raven Industries recommends the following best practices when installing or operating the SmarTrax system for the first time, at the start of the season, or when moving the SmarTrax system to another machine:

- Install the GPS antenna in the recommended location. Refer to the following table for the machine-specific antenna mounting location.

Machine Preset	Antenna X Position (left to right)	Antenna Y Position (from the rear wheel axle to the antenna position on the cab)	Antenna Z Position (ground to top of antenna)
CNH SPX 2240 2014	Centered	11 ft. 7 in./3.53 m	11 ft. 4 in./3.45

- Ensure the machine’s hydraulic filters have been recently changed and there are no issues with the machine’s hydraulic system (e.g., pump issues, faulty hydraulic motors, fine metal deposits in the hydraulic hoses, etc.).
- Ensure the machine’s hydraulic system is using fresh oil and debris is flushed from the hydraulic hoses, valves, and filters.

Raven Industries recommends the following best practices when installing the SmarTrax system:

- Use part numbers to identify the parts.
- Do not remove the plastic wrap from a part until it is necessary for installation.
- Do not remove plastic caps from a part until it is necessary for installation.

POINT OF REFERENCE

The instructions in this manual assume that you are standing behind the machine, looking toward the cab.

UPDATES

Software and manual updates are available on the Raven Applied Technology website:

<http://www.ravenhelp.com>

At Raven Industries, we strive to make your experience with our products as rewarding as possible. One way to improve this experience is to provide us with feedback on this manual.

Your feedback will help shape the future of our product documentation and the overall service we provide. We appreciate the opportunity to see ourselves as our customers see us and are eager to gather ideas on how we have been helping or how we can do better.

To serve you best, please send an email with the following information to

techwriting@ravenind.com

-SmarTrax, Case IH Patriot 2250, Non-Steer Ready, MY17 and Newer Installation Manual

-Manual No. 016-5032-037 Rev. A

-Any comments or feedback (include chapter or page numbers if applicable).

-Let us know how long have you been using this or other Raven products.

We will not share your email or any information you provide with anyone else. Your feedback is valued and extremely important to us.

Thank you for your time.

KIT CONTENTS

This section contains a list of the components that are included in the SmarTrax kit. Before beginning the SmarTrax installation, compare the items in the kit with the components on this list. If you have questions about the kit, contact your Raven dealer.

NOTE: The SmarTrax node (P/N 063-0173-228) is sold separately. Contact your local Raven dealer for ordering information.

TABLE 1. SmarTrax Installation Kit (P/N 117-5032-037)

Picture	Item Description	Part Number	Qty.
Not Pictured	Manual - SmarTrax Calibration & Operation	016-0171-277	1
Not Pictured	SmarTrax, Case IH Patriot 2250, Non-Steer Ready, MY17 and Newer Installation Manual	016-5032-037	1
	Valve - SmarTrax Hydraulic	334-0003-088	1
	Switch - Flow	334-0003-085	1
	Bracket - Hydraulic Valve Mounting	107-0171-705	1
	Bracket - Node Mounting	107-0172-084	1
	Cable - Hydraulic Valve Harness	115-4001-111	1
	Cable - Node Harness	115-4001-135	1

TABLE 1. SmarTrax Installation Kit (P/N 117-5032-037)




Picture	Item Description	Part Number	Qty.
	Cable - Case IH Patriot CAN Adapter	115-4001-252	1
	Assembly - SmarTrax Enable Switch	063-0172-470	1

TABLE 2. Hydraulic Installation Kit (P/N 117-0199-114)

Picture	Item Description	Part Number	Qty.
	Fitting - -8 ORFS M/M/F Swivel Run Tee Adapter	333-0012-028	1
	Fitting - -4 SAE O-Ring Plug	333-0012-051	1
	Fitting - -6 ORFS M/M/F Swivel Run Tee Adapter	333-0012-069	3
	Fitting - -6 ORFS (M) to -6 SAE O-Ring (M) Straight Adapter	333-0012-084	2
	Fitting - -6 SAE O-Ring Plug	333-0012-104	2
	Fitting - -6 ORFS (M) to -8 SAE O-Ring (M) Straight Adapter	333-0012-199	2
	Fitting - -6 ORFS (M) to -10 SAE O-Ring (M) Straight Adapter	333-0012-233	2

TABLE 2. Hydraulic Installation Kit (P/N 117-0199-114)

Picture	Item Description	Part Number	Qty.
	Hydraulic Hose - -6 ORFS (F) 90° to -6 ORFS (F) - 96"	214-1000-884	4
	Hydraulic Hose - -8 ORFS (F) to -6 ORFS (F) - 96"	214-1000-885	1

CHAPTER

3

HYDRAULIC SYSTEM INSTALLATION



WARNING

Hydraulics are under pressure. Care should always be taken with a system that has been pressurized.

Before beginning the SmarTrax hydraulic installation, turn off the machine and relieve pressure by turning the steering wheel left and right.

Never work on a hot machine. Always allow it to cool before performing diagnostics, maintenance, or routine service.

When disconnecting or purging hydraulic hoses, be aware that the hydraulic fluid within the machine's system may be extremely hot and under high pressure.


Tampering with hydraulic valves may cause serious injury or death, and will void the warranty.



CAUTION

When installing SmarTrax hydraulics or performing diagnostics, maintenance, or routine service, ensure precautions are taken to prevent any foreign material from being introduced into the machine's hydraulic system.

Objects or materials that are able to bypass the machine's hydraulic filtration system will reduce performance and possibly damage the SmarTrax hydraulic valve.



NOTICE

The appearance of the SmarTrax hydraulic valve may vary slightly from the images contained in this manual. However, the fittings, hose connections, and cable connections remain the same.

INSTALL FITTINGS IN THE SMARTRAX VALVE

Before mounting the SmarTrax valve (P/N 334-0003-088) on the machine, install the proper fittings in the valve. This prepares the valve for installation and simplifies the hose connection process later in the procedure. Refer to the figure and table below to install the fittings in the valve.

FIGURE 1. Fittings Installed in the SmarTrax Valve



Fitting	Part Number	Port
Fitting - -6 SAE O-Ring Plug	333-0012-104	LSPV, LS STEER
Fitting - -4 SAE O-Ring Plug	333-0012-051	PS
Fitting - -6 ORFS (M) to -8 SAE O-Ring (M) Straight Adapter	333-0012-199	P, T
Fitting - -6 ORFS (M) to -10 SAE O-Ring (M) Straight Adapter	333-0012-233	A, B

INSTALL FITTINGS ON THE FLOW SWITCH

FIGURE 2. Fittings Installed on the Flow Switch



1. Install a -6 ORFS (M) to -6 SAE O-ring (M) straight adapter fitting (P/N 333-0012-084) in Ports A2 and B3 of the flow switch (P/N 334-003-085).
2. Install the pressure transducers in Ports A1 and B1 of the flow switch.

MOUNT THE SMARTRAX VALVE

FIGURE 3. New Air Cleaner Hose Mounting Clamp Location



1. Remove the air cleaner hose from the mounting clamp.
2. Remove clamp from the current mounting location.
3. Install the mounting clamp on the middle bolt to the right of the factory-installed location as shown in Figure 3 above.
4. Remove the bolts used to secure the machine's radar bracket.

NOTE: The radar bracket is located beneath the cab, beside the step.

FIGURE 4. Mounting Bracket Installed on Left Frame Rail (Beside Radar)



5. Using the machine's bolts, secure the valve mounting bracket (P/N 107-0171-705) to the radar bracket.

FIGURE 5. SmarTrax Valve and Flow Switch Installed



6. Install the SmarTrax valve (P/N 334-0008-088) on the valve mounting bracket using four 5/16"-18 x 7/8" hex bolts (P/N 311-0052-104) and four 5/16" split lock washers (P/N 313-1000-019).
7. Install the flow switch (P/N 334-0003-085) on the valve mounting bracket using two 1/4"-20 screws (P/N 311-0050-109), two 1/4" flat washers (P/N 313-2300-009), two 1/4" split lock washers (P/N 313-1000-016), and two 1/4"-20 hex nuts (P/N 312-1001-074).

INSTALL THE LEFT AND RIGHT STEERING HOSES

1. Locate and disconnect the machine's left steering hose from the steering cylinder on the right side of the sprayer chassis.

NOTE: The left steering hose is connected to the fitting located closest to the center of the machine.

FIGURE 6. Machine's Left Steering Hose Installed on Flow Switch



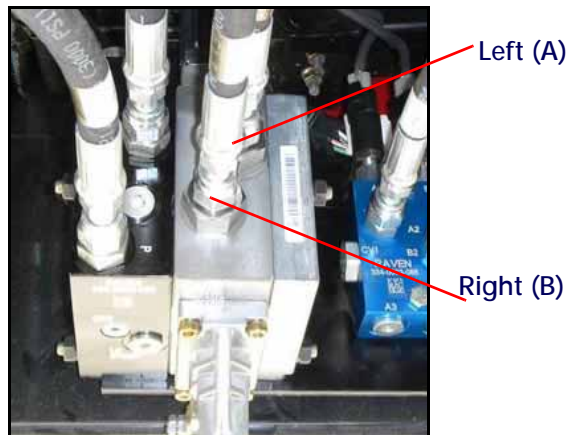
2. Route and connect the left steering hose to the fitting installed in Port A2 of the installed flow switch (P/N 334-0003-085).

FIGURE 7. Left Steering Hose Installed



3. Install a -6 ORFS M/M/F swivel run tee adapter fitting (P/N 333-0012-069) on the open left steering cylinder port.
4. Install the straight end of the supplied hydraulic hose (P/N 214-1000-884) on the opposite end of the installed tee fitting.
5. Connect the 90° end of the installed hydraulic hose to the fitting in Port B3 of the installed flow switch.

FIGURE 8. Second Left Steering Hose Installed



6. Install the 90° end of the supplied hydraulic hose (P/N 214-1000-884) on the 90° end of the installed tee fitting.
7. Install the straight end of the installed hydraulic hose to the fitting installed in Port A of the SmarTrax valve.
8. Locate and disconnect the machine's right steering hose from the cylinder on the left side of the sprayer chassis.

NOTE: The right steering hose is connected to the fitting located closest to the center of the machine.

FIGURE 9. Right Steering Hose Installed



9. Install a -6 ORFS M/M/F swivel run tee adapter fitting (P/N 333-0012-069) in the open right steering cylinder port.
10. Connect the machine's right steering hose to the opposite end of the installed tee fitting.
11. Install the 90° end of the supplied hydraulic hose (P/N 214-1000-884) on the 90° end of the installed tee fitting.
12. Connect the straight end of the installed hydraulic hose the fitting installed in Port B of the SmarTrax valve.

INSTALL THE PRESSURE HOSE

1. Locate and remove the gauge port fitting on the end of the machine's pressure line.

NOTE: The pressure line runs on the inside of the frame from the rear of the machine. The line bends 45° just before the hydraulic hose connection. Trace the pressure line from the pressure port of the steering orbital if necessary.

2. Install a -6 ORFS M/M/F swivel run tee adapter fitting (P/N 333-0012-069) on the steel pressure line.
3. Install the machine's gauge port fitting on the opposite end of the installed tee fitting.
4. Install the straight end of the supplied hydraulic hose (P/N 214-1000-884) on the 90° end of the installed tee fitting.
5. Connect the 90° end of the installed hydraulic hose to the fitting installed in Port P of the SmarTrax valve.

INSTALL THE TANK HOSE

FIGURE 10. Machine's Steel Tank Line



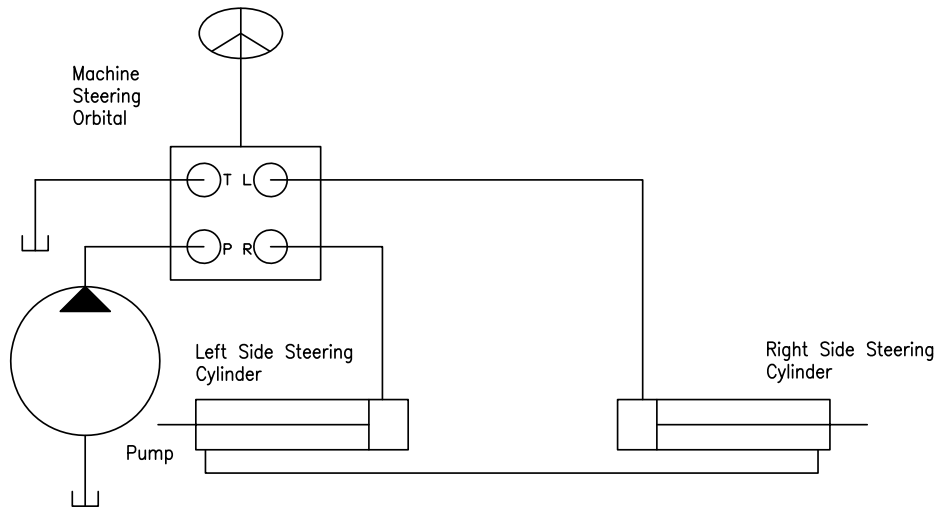
1. Locate and disconnect the machine's tank hose from the steel tank line.

NOTE: The steel tank line runs on the inside of the frame from the rear of the machine. Trace the tank line from the tank port of the steering orbital if necessary.

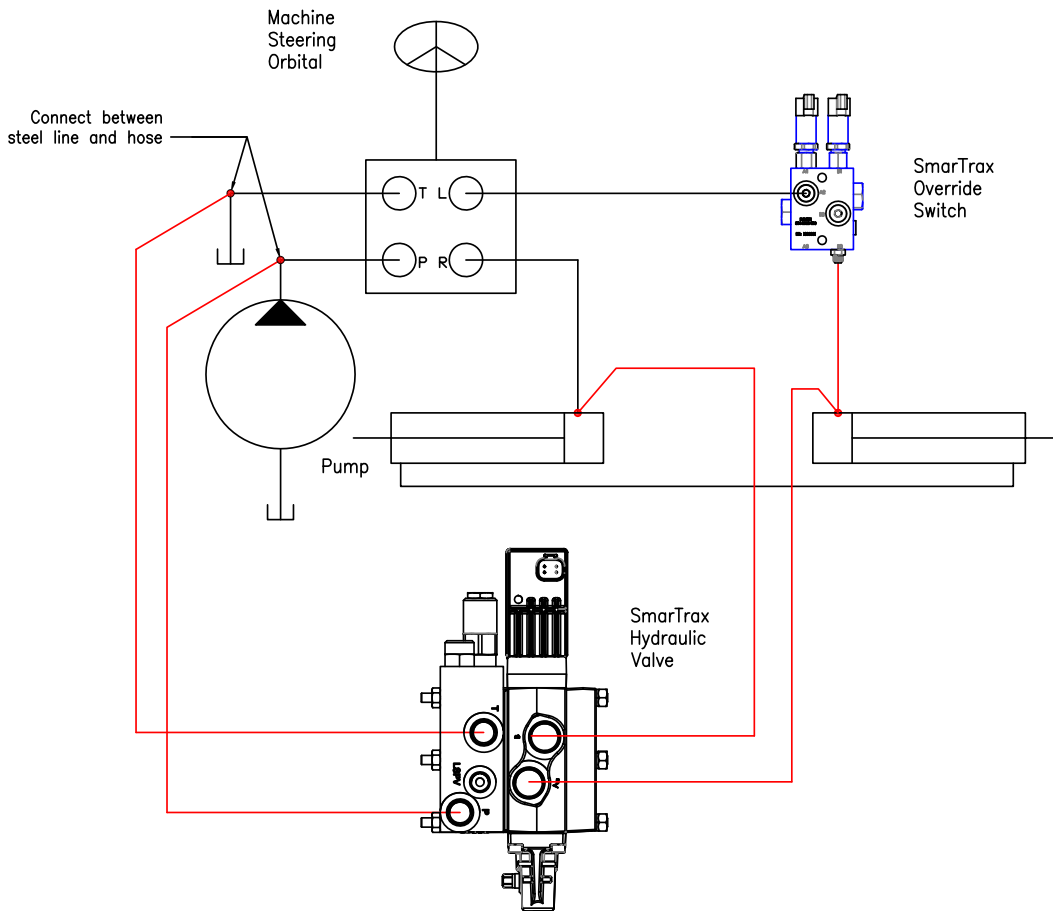
2. Install a -8 ORFS M/M/F swivel run tee adapter fitting (P/N 333-0012-028) on the steel tank line.
3. Connect the machine's tank hose to the opposite end of the installed tee fitting.
4. Install the -8 end of the supplied hydraulic hose (P/N 214-1000-885) on the 90° end of the installed tee fitting.
5. Connect the -6 end of the installed hydraulic hose to the fitting installed in Port T of the SmarTrax valve.

HYDRAULIC DIAGRAM

Before SmarTrax Installation



After SmarTrax Installation





CHAPTER

4

CAB COMPONENT INSTALLATION

INSTALL THE SMARTRAX NODE

MOUNT THE SMARTRAX NODE

FIGURE 1. Node Mounting Location



1. Remove the plastic molding behind the seat by removing the nuts and bolts used to secure it.
2. Install the node mounting bracket (P/N 107-0172-084) in the tapped holes on the back wall of the cab using four M6 hex bolts (P/N 311-0070-010), four washers (P/N 313-2300-009), and four 5/16" lock washers.

IMPORTANT: Install the washers on the bottom bolts between the wall and the mounting plate to level the node. The mounting plate must be within +/- 2° of level to the wall for the SmarTrax system to operate properly.

NOTE: Install the node mounting bracket so that the cable connectors of the node (P/N 063-0173-228) face the operators seat when installed.

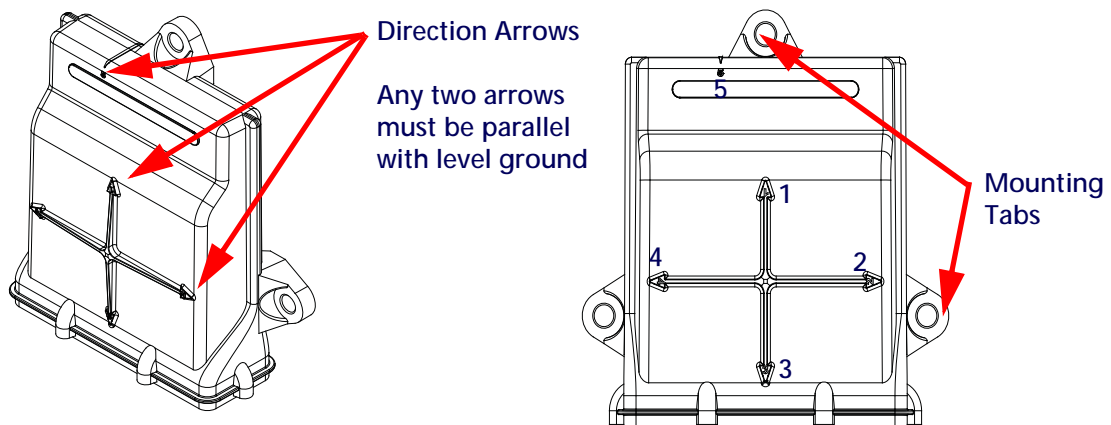
FIGURE 2. SmarTrax Node Installed



3. Mount the SmarTrax node to the node mounting bracket using three 3/8"-16 zinc flanged lock nuts (P/N 312-1001-164).

NODE MOUNTING LOCATIONS

FIGURE 3. Node Mounting



When choosing the location for the SmarTrax node, consider the following points:

- Mount the SmarTrax node inside the machine's cab on a flat, level surface for proper performance and cable connection.
- One of the six numbered direction arrows on the node must be oriented in the direction of forward vehicle travel, one arrow pointing straight up, and two of the arrows parallel to the ground.

NOTE: Make a note of the number of the arrow that is oriented in the direction of forward vehicle travel. This number will be needed during the SmarTrax calibration process.

- The node mounting location must not create tripping hazards.
- Mount the node in a location where it will not be kicked or jarred during normal equipment operation.
- The location must allow cable routing to avoid crimping or damaging the cables or the node connections.
- Securely fasten the node using bolts or screws through at least two of the three mounting holes. When mounted properly, the node should not become loose or rotate.

INSTALL THE FOOT SWITCH

FIGURE 4. Foot Switch Installed



1. Select a suitable location for the foot switch (P/N 063-0172-470) to be installed.

NOTE: The foot switch should be installed in a location where the operator has easy access to it and is able to fully press the pedal.

2. Using the holes in the foot switch as a template, drill holes in the floor of the cab.
3. Secure the foot switch to the floor by installing the supplied screws in each of the mounting holes.
4. Route the cable connector behind the operator's seat.

INSTALL THE NODE HARNESS

FIGURE 5. Node Harness Installed on the Node



1. Install the two large, rectangular connectors of the node harness (P/N 115-4001-135) into the correct ports of the node, tightening the bolts on the harness connectors to secure the connections.

NOTE: The connectors should be pointing toward the middle of the machine.

2. Locate the ENABLE connector and connect it to the foot switch cable connector behind the operator's seat.

FIGURE 6. CAN Connector



3. Connect the node cable's CAN connector to the CAN adapter cable (P/N 115-4001-252).

FIGURE 7. DGPS OUT Connected to Console Receiver Connection



4. Locate and disconnect the machine's green 12-pin CAN connection under the fuse panel.
5. Install the CAN adapter between the machine's green 12-pin CAN connection.
6. Install the CAN adapter between the machine's green 12-pin CAN connection.
7. Route and connect the DGPS OUT connector to the console's DGPS connector.
8. Connect the DGPS connector to the GPS receiver cable.

FIGURE 8. Node Harness Connected to Power Leads



9. Connect the power leads to the battery studs located behind the operator's seat.

INSTALL THE VALVE HARNESS

1. Connect the VALVE connector of the valve harness cable (P/N 115-4001-111) to the PVE port of the SmarTrax valve (P/N 334-0003-088).

FIGURE 9. Valve Harness Connected to Flow Switch



2. Plug the PS1 and PS2 connectors from the valve cable into the pressure transducers on the flow switch (P/N 334-0003-085).

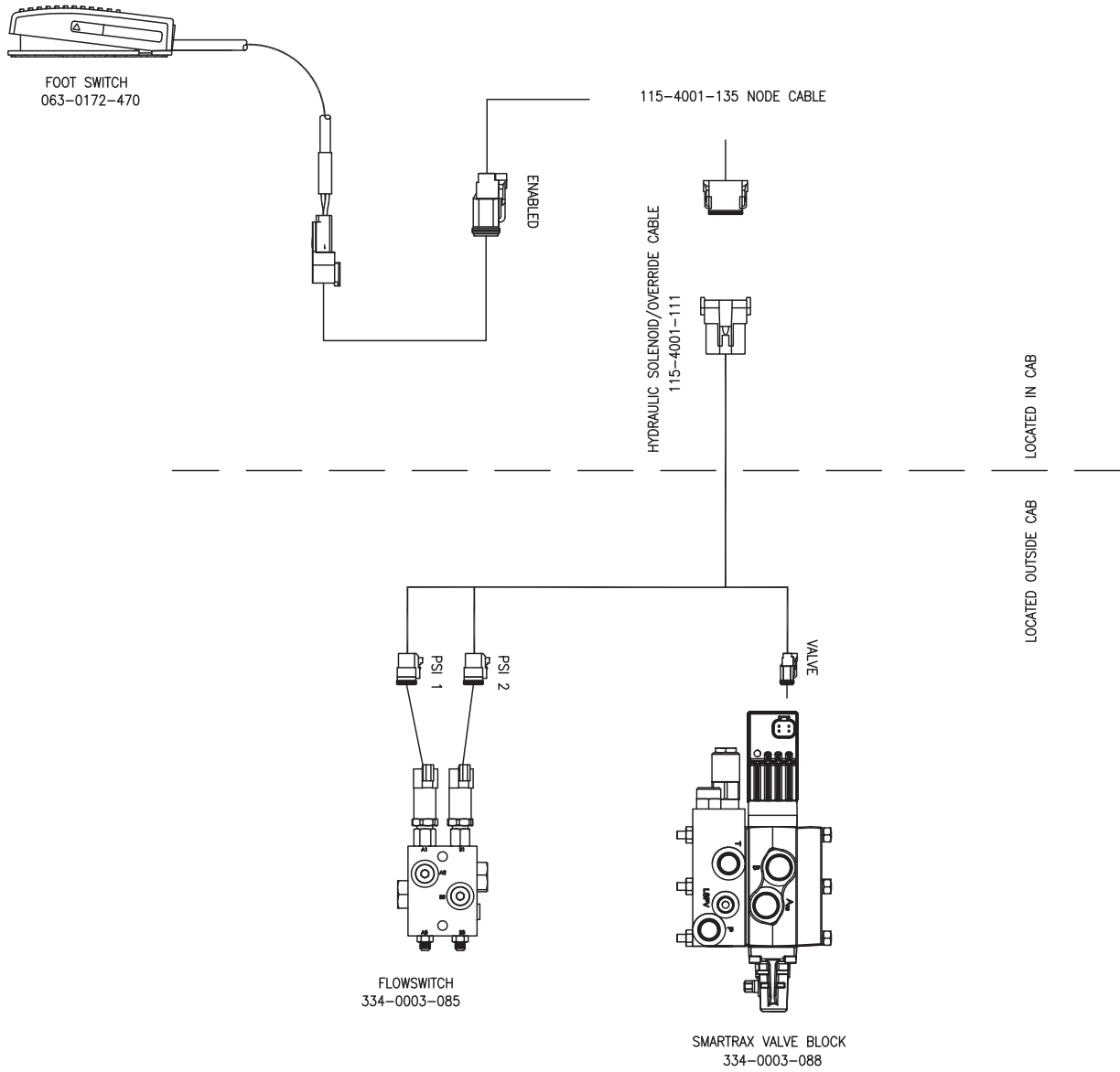
NOTE: These connections can be plugged into either transducer.


FIGURE 10. Valve Harness Routed into the Cab



3. Route the valve harness into the cab through the access panel in the right-rear corner of the cab.
4. Connect the 12-pin connector of the valve harness to the mating connector of the node harness (P/N 115-4001-135).


FIGURE 11. Valve Harness Wiring Diagram





WARNING

When starting the machine for the first time after installing SmarTrax, be sure that all persons stand clear in case a hose has not been properly tightened.



WARNING

Do not use hands to check for leaks. Hydraulic fluid under pressure can penetrate the skin and cause serious injury or death.

VERIFY THE SMARTRAX SYSTEM INSTALLATION

1. Turn on the machine.
2. Double-check all fittings and hose connections to ensure that:
 - Hoses are not rubbing on or interfering with moving parts.
 - Hydraulic fluid is not leaking from the system.
3. Turn the machine's wheels fully from side to side repeatedly to remove air from the hydraulic system.

NOTE: During the SmarTrax system installation, whenever the hydraulic system is purged for maintenance, or when fittings are loosened or disconnected, air is introduced into the lines of the hydraulic system. If air pockets are present, the wheels may not move consistently when the steering wheel is turned.

4. Continue turning the wheels until they move steadily and smoothly when the steering wheel is turned.
5. Access the System Diagnostic screen by selecting the MACHINE TEST option on the Machine Type screen and turn the wheels using the Raven field computer. The machine may need to be rolling forward to cause the wheels to turn left and right.

NOTE: If there are issues with the SmarTrax system, turn off the machine and correct them immediately. For additional assistance, refer to the SmarTrax Calibration & Operation Manual (P/N 016-0171-277) or contact your local Raven dealer.

CALIBRATE THE SMARTRAX SYSTEM

Refer to the SmarTrax Calibration and Operation Manual (P/N 016-0171-277) for instructions on calibrating the SmarTrax system, adjusting system settings, and system operation.

C

Cab Component Installation

- Installing the Foot Switch 25
- Installing the Node Harness 25
- Installing the SmarTrax Node 23
 - Mounting the SmarTrax Node 23
 - Node Mounting Locations 24
- Installing the Valve Harness 25

H

Hydraulic Installation

- Hydraulic Diagram 20
- Installing Fittings in the SmarTrax Valve 14
- Installing Fittings on the Flow Switch 14
- Installing the Left and Right Steering Hoses 16
- Installing the Pressure Hose 19
- Installing the Tank Hose 19
- Mounting the SmarTrax Valve 15

I

Important Safety Information

- Electrical Safety 2
- Hydraulic Safety 2

Introduction

- Kit Contents 9
- Preparing for Installation 7
 - Point of Reference 8
 - Recommendations 7

K

Kit Contents 9

S

Startup Procedures

- Calibrating the SmarTrax System 34
- Verifying the SmarTrax System Installation 33

RAVEN

Limited Warranty

What Does this Warranty Cover?

This warranty covers all defects in workmanship or materials in your Raven Applied Technology Division product under normal use, maintenance, and service when used for intended purpose.

How Long is the Coverage Period?

Raven Applied Technology products are covered by this warranty for 12 months from the date of retail sale. In no case will the Limited Warranty period exceed 24 months from the date the product was issued by Raven Industries Applied Technology Division. This warranty coverage applies only to the original owner and is non-transferable.

How Can I Get Service?

Bring the defective part and proof of purchase to your Raven dealer. If the dealer approves the warranty claim, the dealer will process the claim and send it to Raven Industries for final approval. The freight cost to Raven Industries will be the customer's responsibility. The Return Materials Authorization (RMA) number must appear on the box and all documentation (including proof of purchase) must be included inside the box to be sent to Raven Industries.

What Will Raven Industries Do?

Upon confirmation of the warranty claim, Raven Industries will (at our discretion) repair or replace the defective product and pay for the standard return freight, regardless of the inbound shipping method. Expedited freight is available at the customer's expense.

What is not Covered by this Warranty?

Raven Industries will not assume any expense or liability for repairs made outside our facilities without written consent. Raven Industries is not responsible for damage to any associated equipment or products and will not be liable for loss of profit, labor, or other damages. The obligation of this warranty is in lieu of all other warranties, expressed or implied, and no person or organization is authorized to assume any liability for Raven Industries.

Damages caused by normal wear and tear, misuse, abuse, neglect, accident, or improper installation and maintenance are not covered by this warranty.



Extended Warranty

What Does this Warranty Cover?

This warranty covers all defects in workmanship or materials in your Raven Applied Technology Division product under normal use, maintenance, and service when used for intended purpose.

Do I Need to Register My Product to Qualify for the Extended Warranty?

Yes. Products/systems must be registered within 30 days of retail sale to receive coverage under the Extended Warranty. If the component does not have a serial tag, the kit it came in must be registered instead.

Where Can I Register My Product for the Extended Warranty?

To register, go online to www.ravenhelp.com and select Product Registration.

How Long is the Extended Warranty Coverage Period?

Raven Applied Technology products that have been registered online are covered for an additional 12 months beyond the Limited Warranty for a total coverage period of 24 months from the date of retail sale. In no case will the Extended Warranty period exceed 36 months from the date the product was issued by Raven Industries Applied Technology Division. This Extended Warranty coverage applies only to the original owner and is non-transferable.

How Can I Get Service?

Bring the defective part and proof of purchase to your Raven dealer. If the dealer approves the warranty claim, the dealer will process the claim and send it to Raven Industries for final approval. The freight cost to Raven Industries will be the customer's responsibility. The Return Materials Authorization (RMA) number must appear on the box and all documentation (including proof of purchase) must be included inside the box to be sent to Raven Industries. In addition, the words "Extended Warranty" must appear on the box and all documentation if the failure is between 12 and 24 months from the retail sale.

What Will Raven Industries Do?

Upon confirmation of the product's registration for the Extended Warranty and the claim itself, Raven Industries will (at our discretion) repair or replace the defective product and pay for the standard return freight, regardless of the inbound shipping method. Expedited freight is available at the customer's expense.

What is Not Covered by the Extended Warranty?

Raven Industries will not assume any expense or liability for repairs made outside our facilities without written consent. Raven Industries is not responsible for damage to any associated equipment or products and will not be liable for loss of profit, labor, or other damages. Cables, hoses, software enhancements, and remanufactured items are not covered by this Extended Warranty. The obligation of this warranty is in lieu of all other warranties, expressed or implied, and no person or organization is authorized to assume any liability for Raven Industries.

Damages caused by normal wear and tear, misuse, abuse, neglect, accident, or improper installation and maintenance are not covered by this warranty.