

---

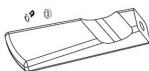




# MX/STX Fit Kit Installation

The MX/STX Fit Kit is designed to be installed on vehicles that require a bracket configuration different than the one shipped with the SmarTrax installation kit to prevent interference between the mechanical drive unit and other parts of the vehicle's steering column. The MX/STX Fit Kit can be installed on the following vehicles:

- Case IH MX Magnum
- Case IH STX Steiger
- Case IH STX Quadtrac
- Case IH SPX Sprayers
- Case IH FLX Floaters with Surveyor Cab
- New Holland TJ
- New Holland TG
- New Holland T7000/8000 Series

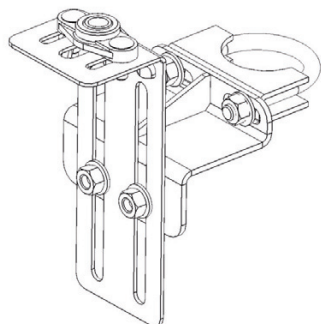
These are generic installation instructions. For machine-specific instructions, contact your local dealer.

**TABLE 1. MX/STX Fit Kit (P/N 117-0192-030)**

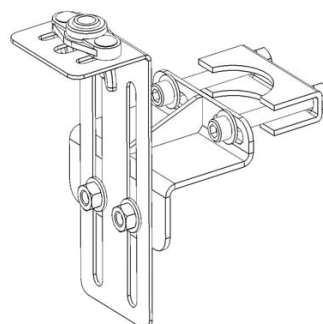
Picture	Item Description	Part Number	Qty.
	Shift Lever	203-0109-01	1
	Bracket Kit	200-0424-02	1
	Shim	202-0269-02	4
	Socket Head Screw 10-24 x 2" SS	514-0163-01	8
	Socket Head Screw 10-24 x 2.5"	514-0165-01	8

## Assemble the Column Bracket

**FIGURE 1. Bracket Installation**



OR



1. Determine the best method to install the column bracket based on the steering column configuration.
2. Assemble the column bracket using the appropriate method for the vehicle's configuration.

## Install the Mechanical Drive Unit (MDU)

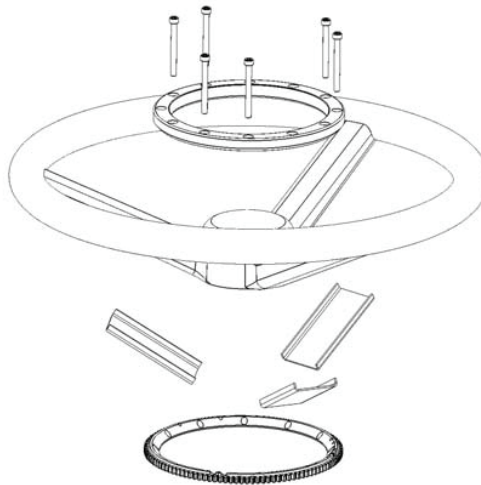
FIGURE 2. Recommended MDU Orientation



1. Install the mechanical drive unit.

**Note:** Do not use the plastic spacer ring provided with the installation kit.

FIGURE 3. Shim Installation



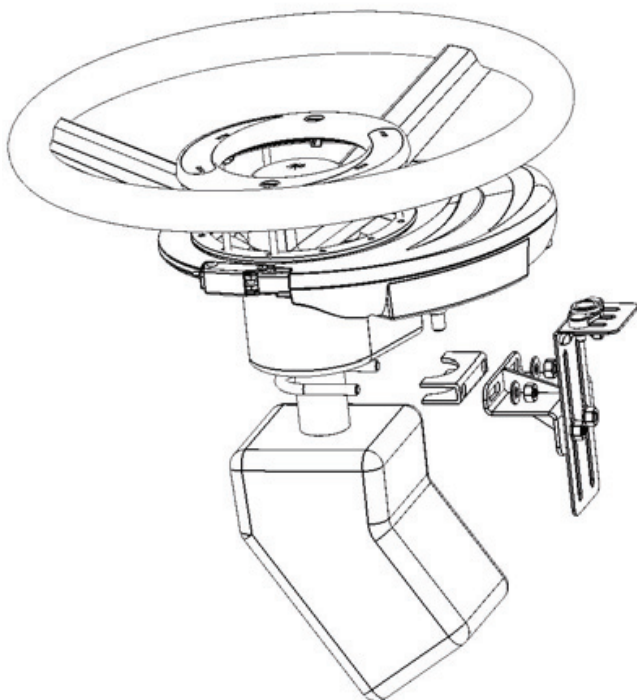
**Note:** If there is interference between the steering wheel spokes and the main gear, remove the paper backing from the inner surface of the shims and install them between the steering wheel spokes and the main gear as shown in the figure above.

---

## Install the Column Bracket

FIGURE 4. Column Bracket Installed

---



1. Loosen the two fifth wheel slider bolts.
2. Align the two column bracket nuts with the muffler clamp holes to fasten the bracket's elements together.

**Note:** Depending on the model of the vehicle, it may be necessary to push down on the rubber boot to install the column bracket correctly as shown in the figure below.

FIGURE 5. Rubber Boot Adjusted to Install the Bracket

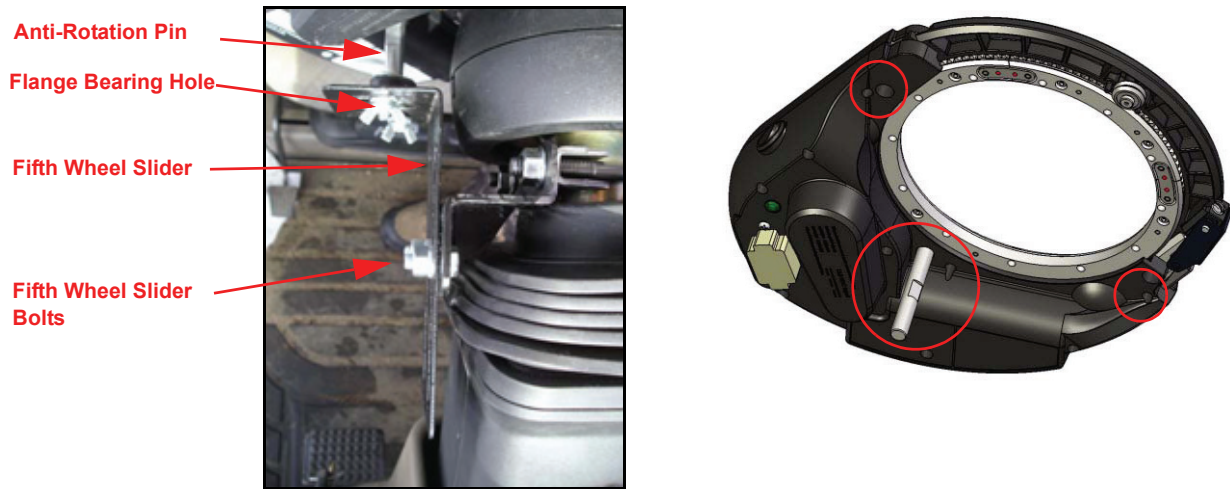
---



---

## Install the Anti-Rotation Pin

FIGURE 6. Anti-Rotation Pin Installed



**Note:** The use of Loctite 242 on the anti-rotation pin threads is strongly recommended. Loctite 242 is not included in the installation kit.

1. Install the anti-rotation pin on the MDU in one of the three positions indicated in the figure on the right above, choosing the location that best fits the steering column configuration.
2. Adjust the height of the fifth wheel slider so it matches the height of the anti-rotation pin.
3. Align the anti-rotation pin with the flange bearing hole and adjust the fifth wheel slider.

## Install the Shift Lever

FIGURE 7. Shift Lever Installed



1. Remove the old lever from the steering column.
2. Install the new lever and secure it with the set screw removed in the step above.