

R A V E N

Simply improving your position.SM

SmartBoom™ Installation Manual



RoGator 864, 1064, 874, 1074
(December 2005 & Older)

Disclaimer

While every effort has been made to ensure the accuracy of this document, Raven Industries assumes no responsibility for omissions and errors. Nor is any liability assumed for damages resulting from the use of information contained herein.

Raven Industries shall not be held responsible or liable for the effects of atmospheric conditions and sunspot activity on the performance of our products.

Raven Industries cannot guarantee the accuracy, integrity, continuity, or availability of the GPS signal from the U.S. Department of Defense/NAVSTAR GPS satellites, the OmniSTAR correction service or the WAAS correction service.

Raven Industries accepts no responsibility for the use of the signal for other than the stated purpose. Raven Industries shall not be responsible or liable for incidental or consequential damages or a loss of anticipated benefits or profits, work stoppage or loss or impairment of data arising out of the use, or inability to use, the SmarTrax or any of its components.

CHAPTER

1

INTRODUCTION

Congratulations on your purchase of the Raven Smartboom system! This system is designed to provide worry-free turn on and turn off of your booms with respect to an as-applied area. The following instructions are designed to assist you in the proper installation of the Smartboom system. See the Operation Manual of your Smartboom console for instructions on setting up the software and using the Smartboom system.



Important! All boom switches must be in the OFF position and the master switch must be in the ON position while Smartboom is in operation!

Notes:

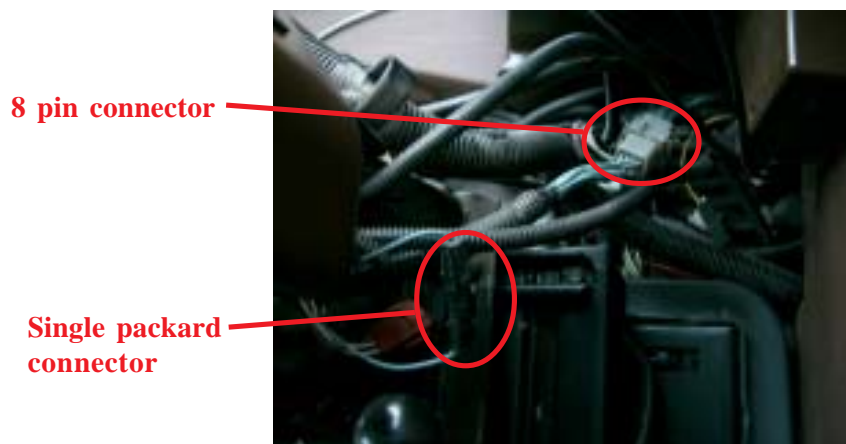
CHAPTER

2

INSTALLATION

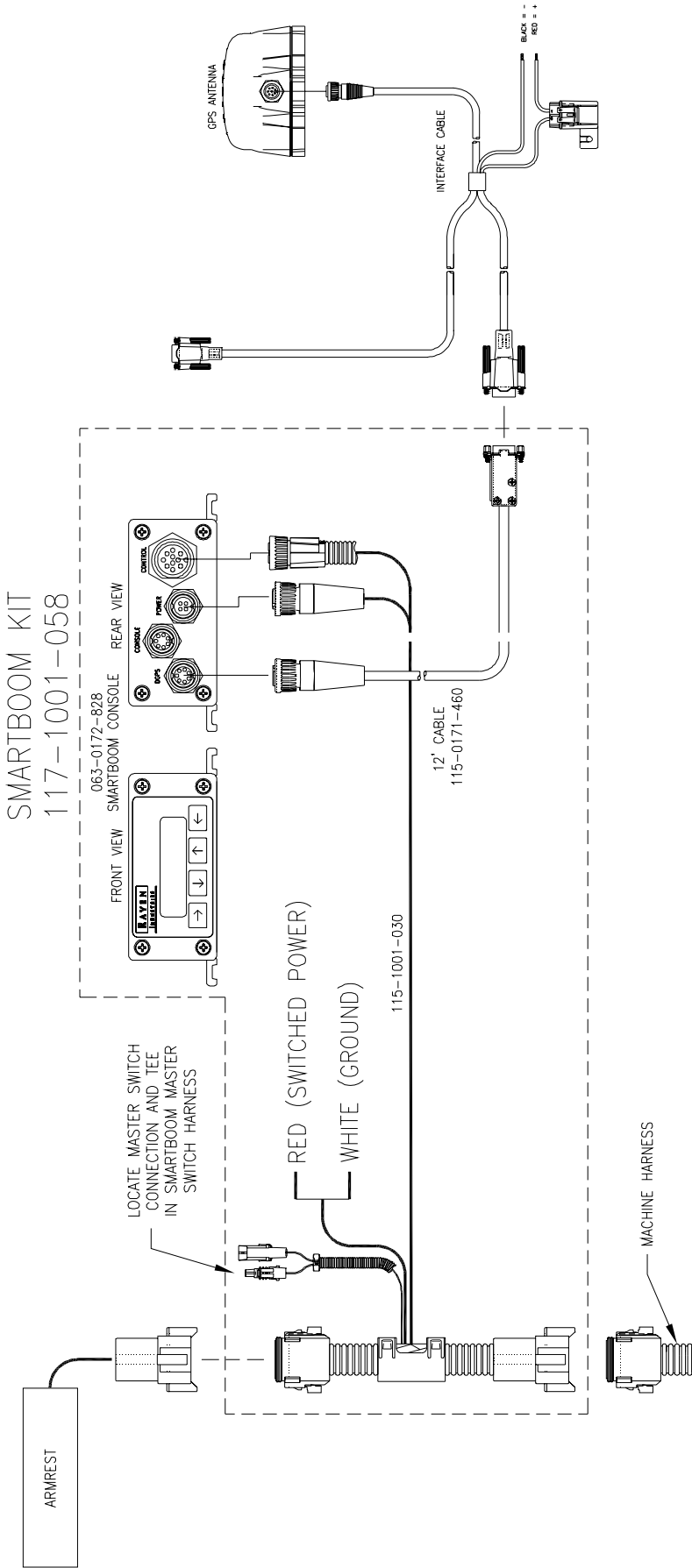
Use the following procedure to properly install the Smartboom system.

1. Locate the 8 pin armrest harness connector behind the armrest.
2. Disconnect and tee in the Smartboom harness.
3. Locate the single packard master switch connector on the armrest harness. Disconnect and tee in the master switch tee on the Smartboom harness.



4. Connect the power leads to a good source of switched power.
5. Installation is now complete.
6. Refer to the Smartboom Operators manual for console setup instructions.

864/1064/874/1074 (DEC. 2005 AND OLDER)
ROGATOR SMARTBOOM SYSTEM INSTALL SCHEMATIC



RAVEN

RAVEN INDUSTRIES

Limited Warranty

What Does this Warranty Cover?

This warranty covers all defects in workmanship or materials in your Raven Applied Technology Product under normal use, maintenance, and service.

How Long is the Coverage Period?

Raven Applied Technology Products are covered by this warranty for 12 months after the date of purchase. This warranty coverage applies only to the original owner and is nontransferable.

How Can I Get Service?

Bring the defective part and proof of purchase to your Raven Dealer. If your Dealer agrees with the warranty claim, the Dealer will send the part and proof of purchase to their distributor or to Raven Industries for final approval.

What Will Raven Industries Do?

Upon confirmation of the warranty claim, Raven Industries will, at our discretion, repair or replace the defective part and pay for return freight.

What is not Covered by this Warranty?

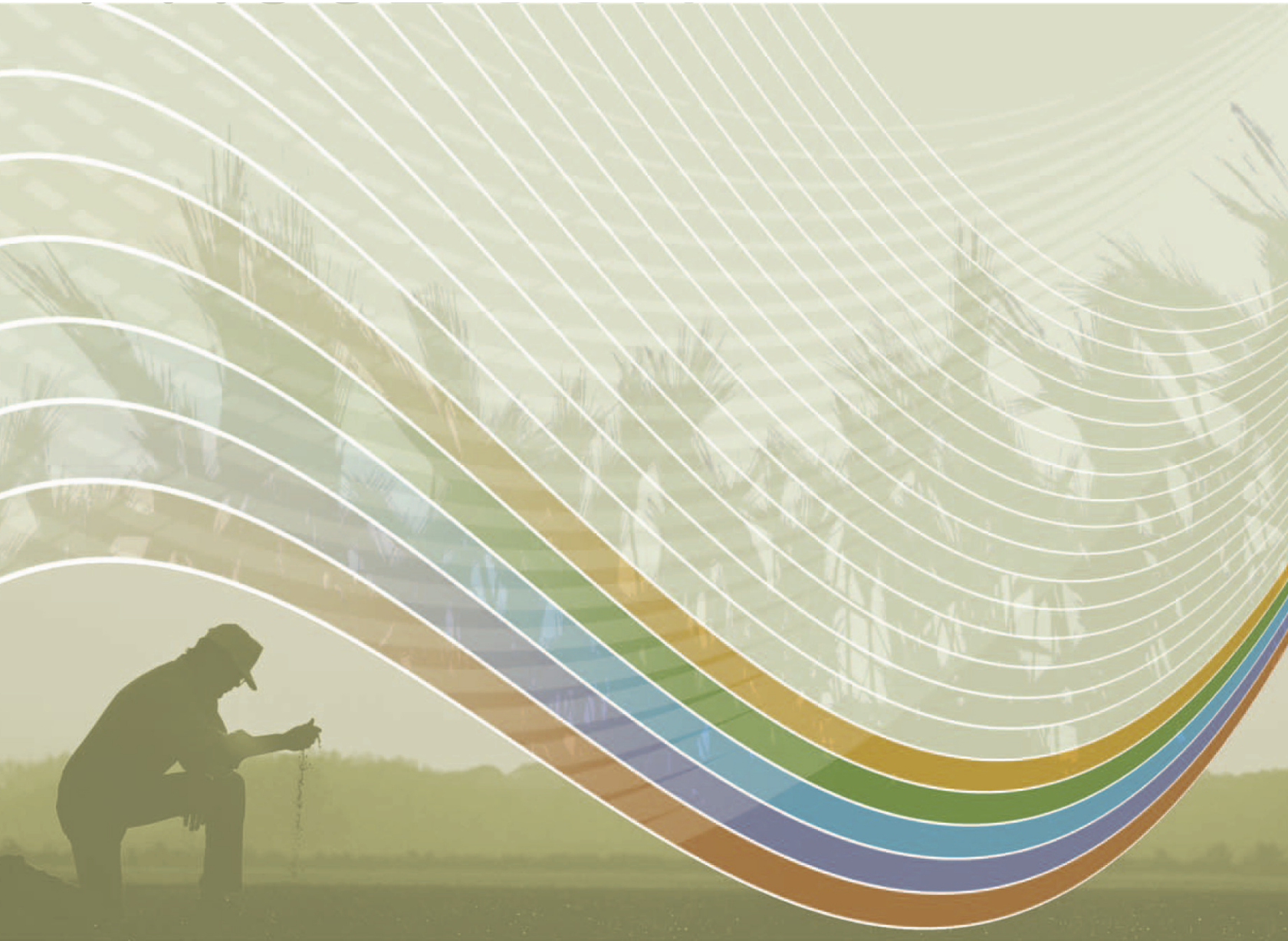
Raven Industries will not assume any expense or liability for repairs made outside our facilities without written consent. Raven Industries is not responsible for damage to any associated equipment or products and will not be liable for loss of profit or other special damages. The obligation of this warranty is in lieu of all other warranties, expressed or implied, and no person or organization is authorized to assume any liability for Raven Industries.

Damages caused by normal wear and tear, misuse, abuse, neglect, accident, or improper installation and maintenance are not covered by this warranty.

R A V E N

RoGator 864, 1064, 874, 1074 (Dec. '05 & Older)
SmartBoom™ Installation Manual
(P/N 016-1001-058 Rev A 9/09)

Simply improving your position.SM



Raven Industries
Applied Technology Division
P.O. Box 5107
Sioux Falls, SD 57117-5107

Toll Free (U.S. and Canada): (800)-243-5435
or Outside the U.S.: 1 605-575-0722

Fax: 605-331-0426
www.ravenprecision.com
atdinfo@ravenind.com

Notice: This document and the information provided are the property of Raven Industries, Inc. and may only be used as authorized by Raven Industries, Inc. All rights reserved under copyright laws.