

R A V E N

Simply improving your position.SM

SmartBoom™ Installation Manual



John Deere
4700, 4710, 4720, 4830, 4920, 4930

Disclaimer

While every effort has been made to ensure the accuracy of this document, Raven Industries assumes no responsibility for omissions and errors. Nor is any liability assumed for damages resulting from the use of information contained herein.

Raven Industries shall not be held responsible or liable for the effects of atmospheric conditions and sunspot activity on the performance of our products. Raven Industries cannot guarantee the accuracy, integrity, continuity, or availability of the GPS signal from the U.S. Department of Defense/NAVSTAR GPS satellites, the OmniSTAR correction service, or the WAAS correction service. Raven Industries accepts no responsibility for the use of the signal for other than the stated purpose.

Raven Industries shall not be responsible or liable for incidental or consequential damages or a loss of anticipated benefits or profits, work stoppage or loss, or impairment of data arising out of the use, or inability to use, this system or any of its components.

CHAPTER

1

INTRODUCTION

Congratulations on your purchase of the Raven Smartboom system! This system is designed to provide worry-free turn on and turn off of your booms with respect to an as-applied area. The following instructions are designed to assist you in the proper installation of the Smartboom system. See the Operation Manual of your Smartboom console for instructions on setting up the software and using the Smartboom system.



Important! All boom switches must be in the OFF position while Smartboom is in operation!

Master Switch Options:

1. Use the master switch on the Smartboom console.
2. Install external switch and connect to the org/wht wire on the Smartboom harness. Supply 12 volts to the org/wht wire via the external switch to enable the master switch on the Smartboom console.

Notes:

CHAPTER

2

INSTALLATION

Use the following procedure to properly install the Smartboom system.

1. Remove screw and retainer plate to access boom section switches.



Remove screw and retainer plate.

2. Unplug connectors from boom switches. Be sure to keep track of the boom sections and their corresponding boom switch!



Unplug connectors from boom switches.

3. Route spade terminal branch of Smartboom harness in behind control panel between window and control panel housing, near the auxilliary power strip. Route the harness up to the boom switch panel.
4. Use the following chart to connect the Smartboom harness to the boom switches and boom switch connector.



Helpful Hint: Note that you are simply teeing the Smartboom harness into the enable wire (pin 3) and passing the power wire (pin 2) through to the switch.



Note: Booms are labeled from left to right. Boom section 1 is the far left boom section.

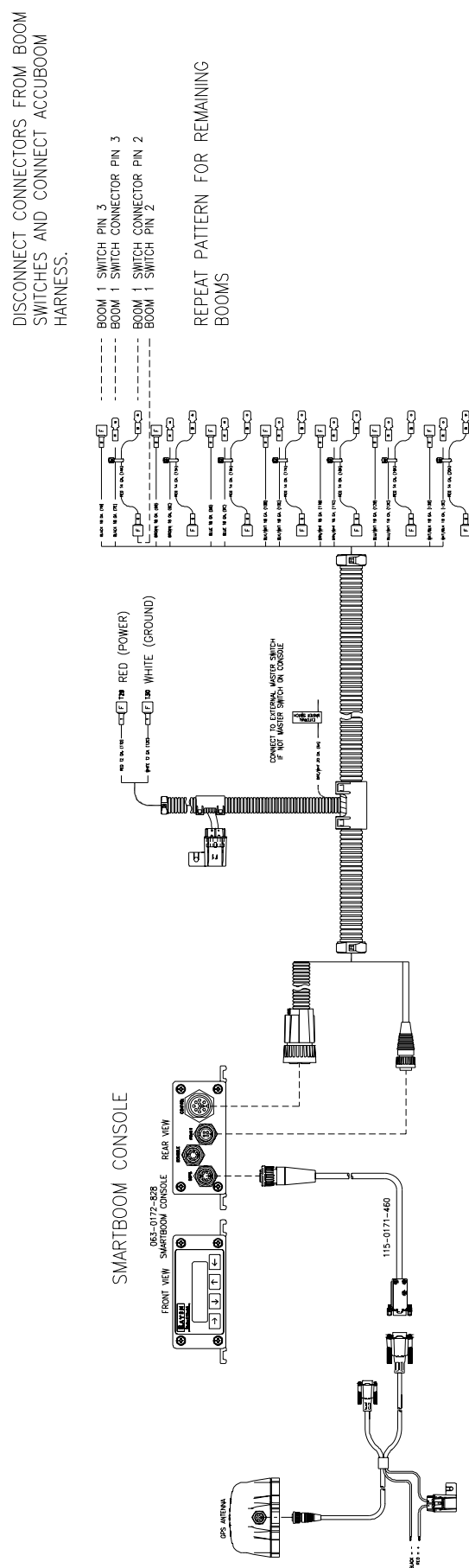
	Accuboom Harness	Boom Switch Connector	Boom Switch
Boom 1	Black - Female Black - Male Spade Short Red Wire	Boom 1 - Pin 3 Boom 1 - Pin 2	Boom 1 - Pin 3 Boom 1 - Pin 2
Boom 2	Brown - Female Brown - Male Spade Short Red Wire	Boom 2 - Pin 3 Boom 2 - Pin 2	Boom 2 - Pin 3 Boom 2 - Pin 2
Boom 3	Blue - Female Blue - Male Spade Short Red Wire	Boom 3 - Pin 3 Boom 3 - Pin 2	Boom 3 - Pin 3 Boom 3 - Pin 2
Boom 4	Black/White - Female Black/White - Male Spade Short Red Wire	Boom 4 - Pin 3 Boom 4 - Pin 2	Boom 4 - Pin 3 Boom 4 - Pin 2
Boom 5	Brown/White - Female Brown/White - Male Spade Short Red Wire	Boom 5 - Pin 3 Boom 5 - Pin 2	Boom 5 - Pin 3 Boom 5 - Pin 2
Boom 6	Blue/White - Female Blue/White - Male Spade Short Red Wire	Boom 6 - Pin 3 Boom 6 - Pin 2	Boom 6 - Pin 3 Boom 6 - Pin 2
Boom 7	White/Black - Female White/Black - Male Spade Short Red Wire	Boom 7 - Pin 3 Boom 7 - Pin 2	Boom 7 - Pin 3 Boom 7 - Pin 2



Note: Depending on the machine model and boom width, you may have additional booms on the Smartboom harness that will not be used.

5. Replace switch panel.
6. Connect power and ground wires to switched power.
7. Connect Smartboom console to the Smartboom harness.

JOHN DEERE SMARTBOOM INSTALL SCHEMATIC



RAVEN

RAVEN INDUSTRIES

Limited Warranty

What Does this Warranty Cover?

This warranty covers all defects in workmanship or materials in your Raven Applied Technology Product under normal use, maintenance, and service.

How Long is the Coverage Period?

Raven Applied Technology Products are covered by this warranty for 12 months after the date of purchase. This warranty coverage applies only to the original owner and is nontransferable.

How Can I Get Service?

Bring the defective part and proof of purchase to your Raven Dealer. If your Dealer agrees with the warranty claim, the Dealer will send the part and proof of purchase to their distributor or to Raven Industries for final approval.

What Will Raven Industries Do?

Upon confirmation of the warranty claim, Raven Industries will, at our discretion, repair or replace the defective part and pay for return freight.

What is not Covered by this Warranty?

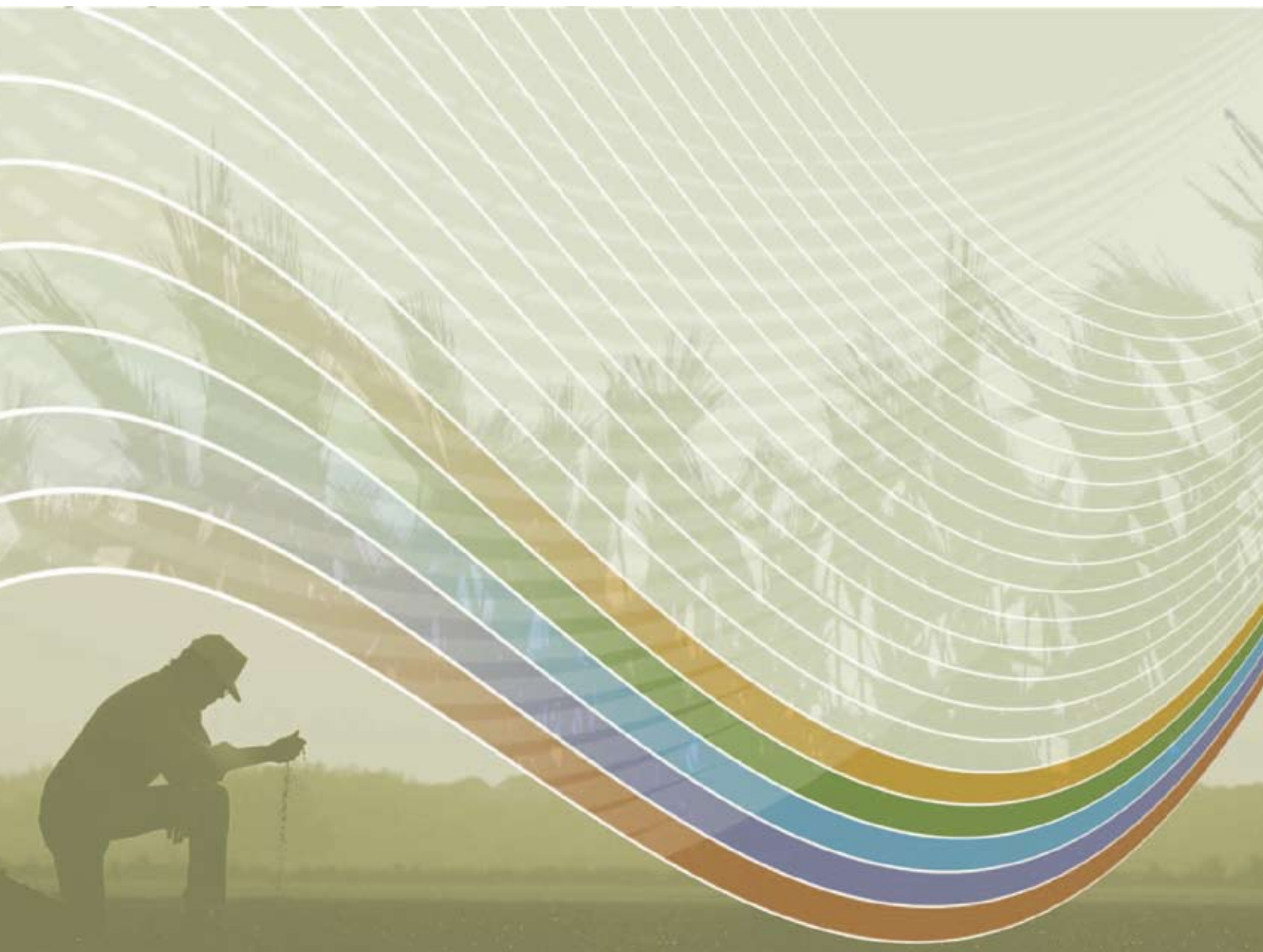
Raven Industries will not assume any expense or liability for repairs made outside our facilities without written consent. Raven Industries is not responsible for damage to any associated equipment or products and will not be liable for loss of profit or other special damages. The obligation of this warranty is in lieu of all other warranties, expressed or implied, and no person or organization is authorized to assume any liability for Raven Industries.

Damages caused by normal wear and tear, misuse, abuse, neglect, accident, or improper installation and maintenance are not covered by this warranty.

R A V E N

John Deere 4700, 4710, 4720, 4830, 4920, 4930
SmartBoom™ Installation Manual
(P/N 016-1001-055 Rev A 12/09)

Simply improving your position.SM



Raven Industries
Applied Technology Division
P.O. Box 5107
Sioux Falls, SD 57117-5107

Toll Free (U.S. and Canada): (800)-243-5435
or Outside the U.S. :1 605-575-0722
Fax: 605-331-0426
www.ravenprecision.com
atdinfo@ravenind.com

Notice: This document and the information provided are the property of Raven Industries, Inc. and may only be used as authorized by Raven Industries, Inc. All rights reserved under copyright laws.