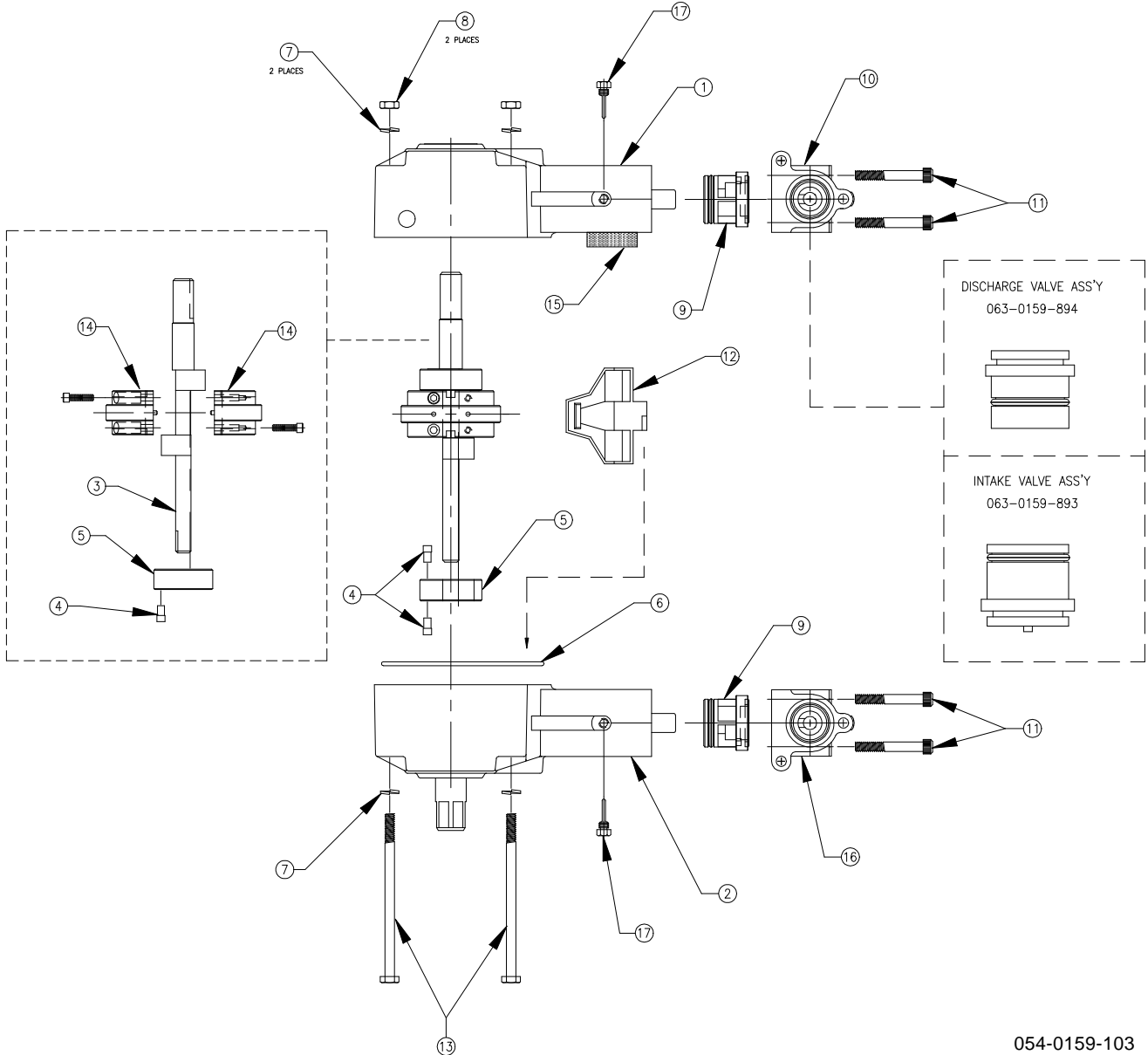


RAVEN INJECTION PUMP REPLACEMENT PARTS

INJECTION PUMP ASSEMBLIES:
063-0159-898

ITEM	DESCRIPTION	RAVEN PART #
1	Housing Assembly, Left	063-0159-889
2	Housing Assembly, Right	063-0159-890
3	Crankshaft	107-0159-925
4	Pin, Eccentric	107-0159-941
5	Eccentric	107-0159-930
6	O-Ring	219-0001-155
7	Lockwasher, Split, 1/4"	313-1000-017
8	Nut, Hex, 1/4-20 UNC	312-1001-033
9	Poly-Pak Assembly	063-0172-082
10	Head, Left	106-0159-543
11	Bolt, Hex Socket Head	311-0068-179
12	Oil Collector	106-0159-537
13	Bolt, Hex Head 1/4-20 UNC x 4 1/4"	019-0159-113
14	Wheel, Oiler, Halves	107-0171-384
15	Foam Tape	218-0159-444
16	Head, Right	106-0159-544
17	Pin, Oil Dripper	107-0171-369



RAVEN INJECTION PUMP REPLACEMENT PARTS

INJECTION PUMP MANIFOLD AND MAGNET WHEEL ASSEMBLIES FOR:
063-0159-898

ITEM	DESCRIPTION	RAVEN PART #
1	Bolt, Hex Head 1/4-20 x 4 1/2"	311-0050-243
2	Lockwasher, Split 1/4"	313-1000-017
3	Nut, Hex 1/4-20	312-1001-033
4	Intake Valve Assembly	063-0159-893
5	Discharge Valve Assembly	063-0159-894
6	Bracket, Pump Mounting	107-0159-945
7	Screw, Cap, Hex Socket Head 1/4-20 x 4 1/2"	311-0068-187
8	Manifold, Discharge	106-0159-541
9	O-Ring	219-0002-121
10	Manifold, Intake	106-0159-540
11	O-Ring	219-0002-110
12	Manifold, Monitor	063-0172-219
13	Plug, Pipe	333-0009-037
14	Pump Assembly	063-0159-897
15	Key, Square	107-0159-947
16	Flat Washer 1/4"ID	313-2300-010
17	Nylon Insert, Locknut	312-4000-057
18	Set Screw, Hex Socket Head	311-0015-729
19	Calibration Wheel	107-0159-943
20	Index Ring	107-0159-589
21	6-32 UNC x 5/8" Lg. Cap Screw	311-0068-026
22	Flat Washer	313-2300-111
23	1/4-20 x 1 3/4" Lg. Machine Screw	311-0050-253
24	Knob	107-0159-592
25	6-32 UNC x 3/16" Lg. Set Screw	311-0015-036
26	Stainless Steel Spring	314-0000-002
27	Pump Pin	107-0159-591
28	Magnet	418-0000-004
29	Printed Magnet Wheel	063-0159-885
30	Pipe Plug	333-0009-012
31	Pipe Plug, Square Head	333-0009-082
32	Nut, Lock, Nylon, 1/4"-20	312-4000-164

