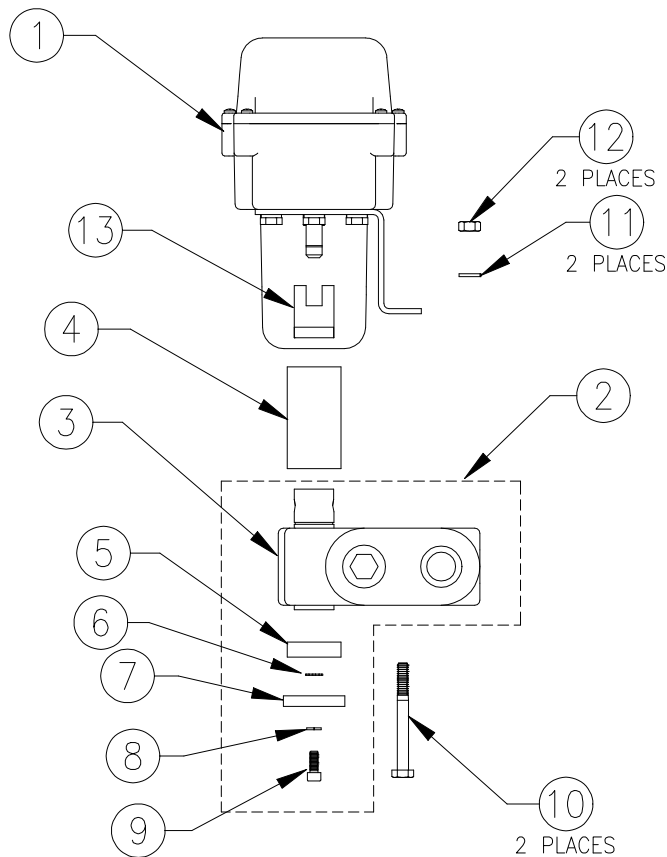


HYDRAULIC CONTROL VALVE W/O PRESSURE COMPENSATION REPLACEMENT PARTS

063-0172-197 (30 GPM)

ITEM	DESCRIPTION	RAVEN PART #
1	Motor Assembly, Control	063-0172-244
2	Valve Assembly (30 GPM)	063-0171-899
3	Valve (30 GPM) W/O Press. Comp.	019-0159-379
4	Retainer, Grease	107-0171-414
5	Retaining, .3" Grease	107-0159-905
6	Washer, External Star	313-4000-010
7	Cap, Grease Retainer	107-0159-904
8	Washer, Split Lock	313-1000-013
9	Screw, Socket Head Cap	311-0068-185
10	1/4-20 x 2 1/2 Hex Head Bolt	311-0049-111
11	Washer, Split Lock, 1/4	313-1000-037
12	Nut, Hex, 1/4-20	312-1001-074
13	Coupler, Brand	107-0171-427



To Assemble:

1. Place Grease Retainer (item 5) over bottom of spool and encapsulate with grease. Assemble remaining items (6 thru 9) to bottom of spool.
2. Place Grease Retainer (item 4) over top of spool and encapsulate with grease.
3. Assemble Motor Assembly (item 1) to Valve Assembly using items 10 thru 12.