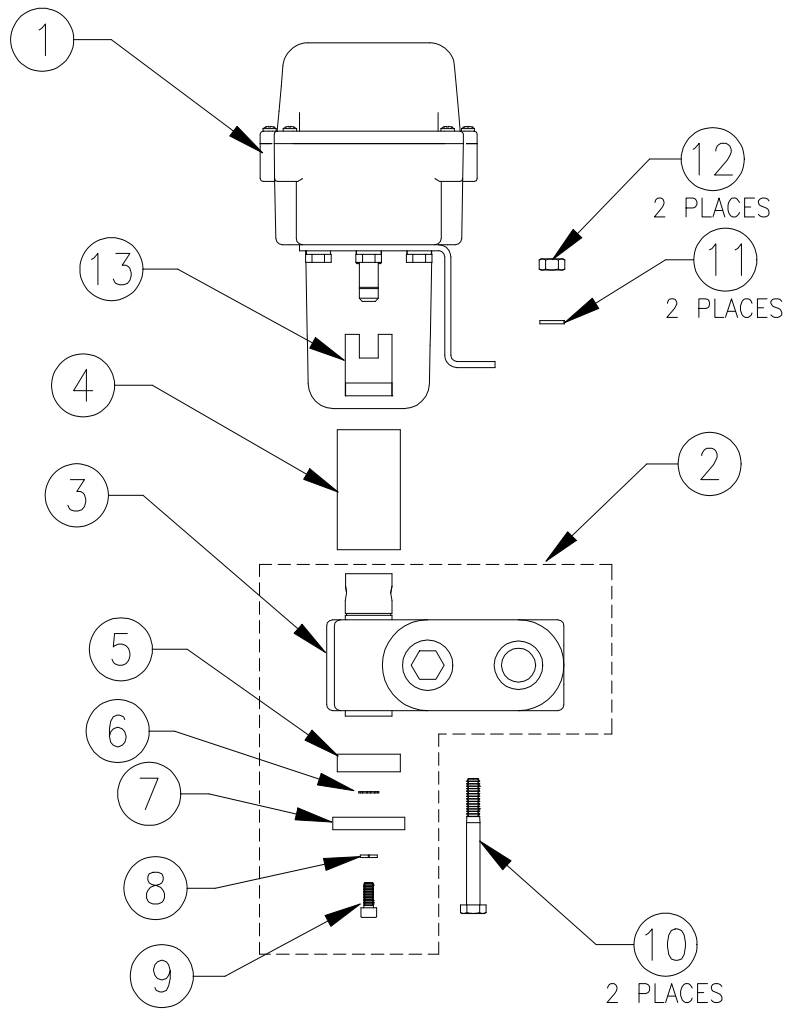


HYDRAULIC CONTROL VALVE, O-RING PORT REPLACEMENT PARTS

063-0172-195 (16 GPM)

063-0172-196 (30 GPM)

ITEM	DESCRIPTION	RAVEN PART #	ITEM	DESCRIPTION	RAVEN PART #
1	Motor Assembly, Control	063-0172-244	6	Washer, External Star	313-4000-010
2	Valve Assembly		7	Cap, Grease Retainer	107-0159-904
	16 GPM, #10 O-Ring Port	063-0171-659	8	Washer, Split Lock	313-1000-013
	30 GPM, #12 O-Ring Port	063-0171-910	9	Screw, Socket Head Cap	311-0068-185
3	Valve		10	1/4-20 x 2 1/2 Hex Head Bolt	311-0049-111
	16 GPM, #10 O-Ring Port	334-0002-046	11	Washer, Split Lock, 1/4	313-1000-037
	30 GPM, #12 O-Ring Port	334-0002-054	12	Nut, Hex, 1/4-20	312-1001-074
4	Retainer, Grease	107-0171-414	13	Coupler, Brand	107-0171-427
5	Retainer, .3" Grease	107-0159-905			



To Assemble:

1. Place Grease Retainer (item 5) over bottom of spool and encapsulate with grease. Assemble remaining items (6 thru 9) to bottom of spool.
2. Place Grease Retainer (item 4) over top of spool and encapsulate with grease.
3. Assemble Motor Assembly (item 1) to Valve Assembly using items 10 thru 12.