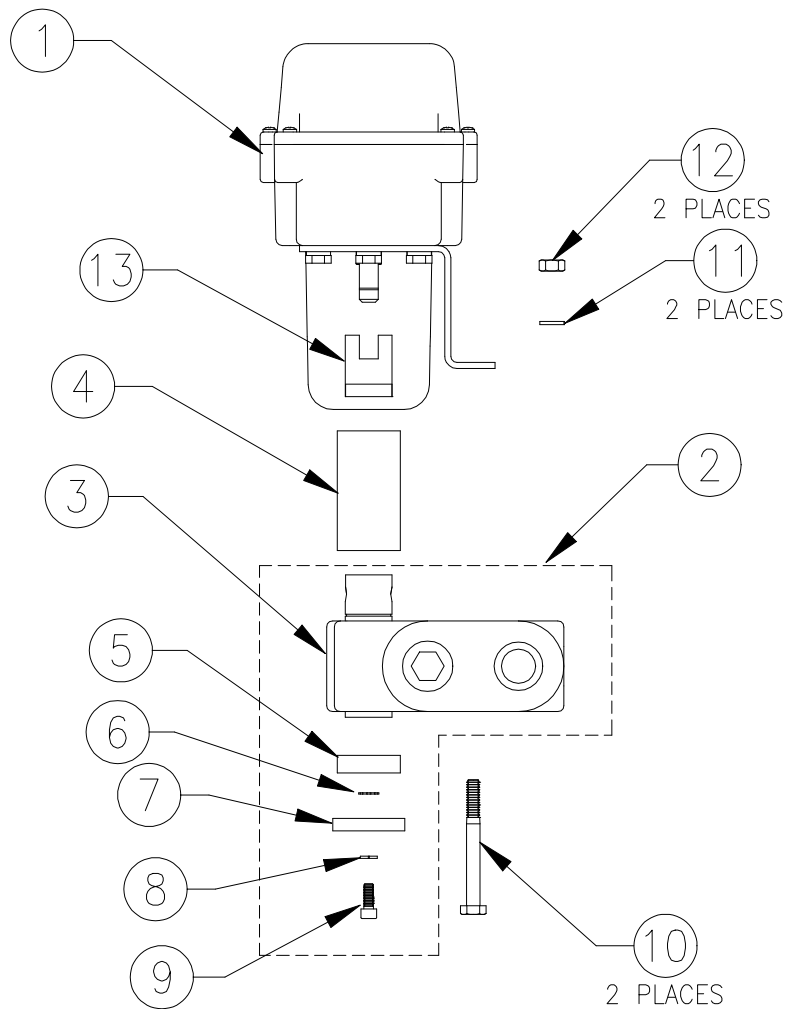


# HYDRAULIC CONTROL VALVE REPLACEMENT PARTS

**063-0172-187 (3 GPM)    063-0172-188 (8 GPM)**  
**063-0172-189 (16 GPM)    063-0172-190 (30 GPM)**

ITEM	DESCRIPTION	RAVEN PART #	ITEM	DESCRIPTION	RAVEN PART #
1	Motor Assembly, Control	063-0172-244	5	Retainer, .3" Grease	107-0159-905
2	Valve Assembly (3 GPM)	063-0159-717	6	Washer, External Star	313-4000-010
	Valve Assembly (8 GPM)	063-0159-821	7	Cap, Grease Retainer	107-0159-904
	Valve Assembly (16 GPM)	063-0159-716	8	Washer, Split Lock	313-1000-013
	Valve Assembly (30 GPM)	063-0159-792	9	Screw, Socket Head Cap	311-0068-185
3	Valve (3 GPM)	334-0002-028	10	1/4-20 x 2 1/2 Hex Head Bolt	311-0049-111
	Valve (8 GPM)	334-0002-033	11	Washer, Split Lock, 1/4	313-1000-037
	Valve (16 GPM)	334-0002-026	12	Nut, Hex, 1/4-20	312-1001-074
	Valve (30 GPM)	334-0002-030	13	Coupler, Brand	107-0171-427
4	Retainer, Grease	107-0171-414			



### To Assemble:

1. Place Grease Retainer (item 5) over bottom of spool and encapsulate with grease. Assemble remaining items (6 thru 9) to bottom of spool.
2. Place Grease Retainer (item 4) over top of spool and encapsulate with grease.
3. Assemble Motor Assembly (item 1) to Valve Assembly using items 10 thru 12.