

**Hagie DTS10/2100/2101
AccuBoom™ Installation Manual**

P/N 016-1001-083 Rev A 04/16

E16742

Disclaimer

While every effort has been made to ensure the accuracy of this document, Raven Industries assumes no responsibility for omissions and errors. Nor is any liability assumed for damages resulting from the use of information contained herein.

Raven Industries shall not be responsible or liable for incidental or consequential damages or a loss of anticipated benefits or profits, work stoppage or loss, or impairment of data arising out of the use, or inability to use, this system or any of its components. Raven Industries shall not be held responsible for any modifications or repairs made outside our facilities, nor damages resulting from inadequate maintenance of this system.

As with all wireless and satellite signals, several factors may affect the availability and accuracy of wireless and satellite navigation and correction services (e.g. GPS, GNSS, SBAS, etc.). Therefore, Raven Industries cannot guarantee the accuracy, integrity, continuity, or availability of these services and cannot guarantee the ability to use Raven systems, or products used as components of systems, which rely upon the reception of these signals or availability of these services. Raven Industries accepts no responsibility for the use of any of these signals or services for other than the stated purpose.

Chapter 1	<i>Important Safety Information</i>	1
	Important Safety Information	1
Chapter 2	<i>Introduction</i>	3
	Introduction	3
	Recommendations	3
	Tools Needed	3
	Preparing for Installation	3
	Point of Reference	4
	AccuBoom Kit Contents	4
Chapter 3	<i>AccuBoom Installation</i>	5
	Install the AccuBoom Cable and Node	5
	Connect the AccuBoom Cable to the Machine’s Harness Cable	8
	Install the Logic Power and Ground Connections	8
Chapter 4	<i>Troubleshooting</i>	11

CHAPTER

1

Important Safety Information

Important Safety Information

NOTICE

Read this manual and the operation and safety instructions included with your implement and/or controller carefully before installing the AccuBoom™ system.

- Follow all safety information presented within this manual.
- If you require assistance with any portion of the installation or service of your Raven equipment, contact your local Raven dealer for support.
- Follow all safety labels affixed to the AccuBoom system components. Be sure to keep safety labels in good condition and replace any missing or damaged labels. To obtain replacements for missing or damaged safety labels, contact your local Raven dealer.

When operating the machine after installing AccuBoom, observe the following safety measures:

- Be alert and aware of surroundings.
- Do not operate AccuBoom or any agricultural equipment while under the influence of alcohol or an illegal substance.
- Remain in the operator's position in the machine at all times when AccuBoom is enabled.
- Disable AccuBoom when exiting from the operator's seat and machine.
- Do not drive the machine with AccuBoom enabled on any public road.
- Determine and remain a safe working distance from other individuals. The operator is responsible for disabling AccuBoom when the safe working distance has been diminished.
- Ensure AccuBoom is disabled prior to starting maintenance work on AccuBoom or the machine.

CAUTION

- Always disconnect the machine's battery before performing work on the machine's electrical system.
- Always verify that the power leads are connected to the correct polarity as marked. Reversing the power leads could cause severe damage to the equipment.
- Ensure that the power cable is the last cable to be connected.

CHAPTER

2

Introduction

Introduction

Congratulations on your purchase of the Raven AccuBoom system! This system is designed to provide accurate and cost-efficient application control by avoiding no-spray zones and eliminating wasteful overlaps.

This manual applies to the following machines. For future reference, write your serial number in the space below.

MAKE: Hagie
MODEL: DTS10, 2100, 2101
YEAR:
SERIAL NUMBER:

Recommendations

Raven Industries recommends the following best practices when installing the AccuBoom system:

- Use part numbers to identify parts.
- Do not remove the plastic wrap from a part until it is necessary for installation.

Tools Needed

The following tools are recommended for installation of the AccuBoom system:

- SAE standard-sized wrenches
- Cable ties
- Set of tools

Preparing for Installation

Before installing AccuBoom, park the machine where the ground is level, clean, and dry. Leave the machine turned off for the duration of the installation process.

During the installation process, follow good safety practices. Be sure to carefully read the instructions in this manual as you complete the installation process.

Point of Reference


The instructions in this manual assume that you are standing behind the machine, looking toward the cab.

AccuBoom Kit Contents

This section contains a list of the components that are included in the AccuBoom kit. Before beginning the AccuBoom installation, compare the items in the AccuBoom kit with the components on this list. If you have questions about the kit, contact your local Raven dealer.

Important: *In addition to the following kit components, an AccuBoom CAN node (P/N 063-0172-316) is required for the operation of the system.*

TABLE 1. AccuBoom Installation Kit (P/N 117-1004-077)

Picture	Item Description	Part Number	Qty.
Not Pictured	Manual - Hagie DTS10/2100/2101 AccuBoom Installation	016-1001-083	1
	Cable - 6' CAN Bus with Tee	115-0171-326	1
	Cable - Hagie STS Series CAN AccuBoom	115-1001-044	1
	Cable - Hagie DTS10 CAN AccuBoom	115-1001-046	1

CHAPTER

3

AccuBoom Installation

The instructions in this manual are designed to assist in the installation of the AccuBoom system on the Hagie DTS10, 2100, and 2101 sprayers. Refer to the Installation & Operation Manual for the specific field computer being used for instructions on setting up the software and using the AccuBoom system.

Install the AccuBoom Cable and Node

FIGURE 1. Locate Cable Connection

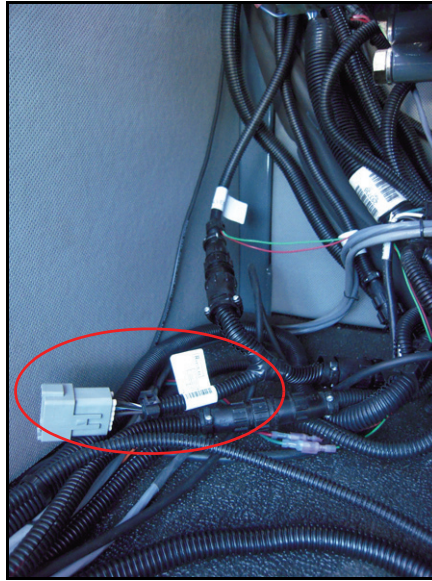


1. Locate the machine's cable connector labeled Solutions Valve.

Note: *The cable connector is located under the arm rest to the right of the seat.*

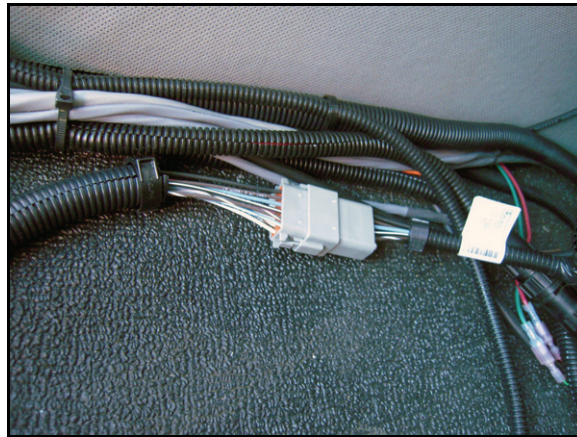
2. Disconnect the cable connection.

FIGURE 2. Hagie DTS10 AccuBoom Cable Connected to Machine's Connector



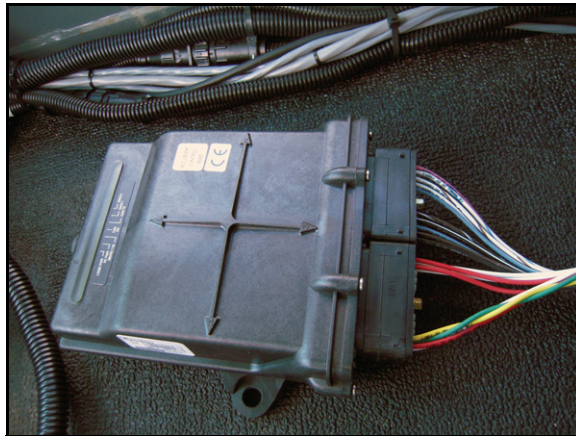
3. Connect the 9-pin connectors of the Hagie DTS10 AccuBoom cable (P/N 115-1001-046) and connect it to the machine's Solutions Valve connector.

FIGURE 3. Hagie STS Series AccuBoom Cable connected to DTS10 Cable



4. Connect the 12-pin Deutsch connector of the installed Hagie DTS10 AccuBoom cable (P/N 115-1001-046) to the 12-pin Deutsch connector of the Hagie STS series AccuBoom cable (P/N 115-1001-044).

FIGURE 4. AccuBoom Node Connected to Cable



5. Connect the large, rectangular node connectors of the Hagie STS series AccuBoom cable (P/N 115-1001-044) into the correct ports of the AccuBoom node.
6. Tighten the bolts on the node connectors to secure the connections.

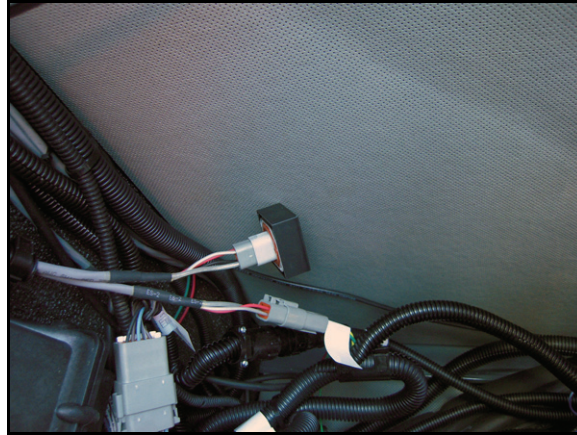
FIGURE 5. Node Mounted to Cab Floor



7. Mount the node in a suitable location on the cab floor, to the right of the arm rest.

Connect the AccuBoom Cable to the Machine's Harness Cable

FIGURE 6. AccuBoom Cable and CAN Tee Cable Connection



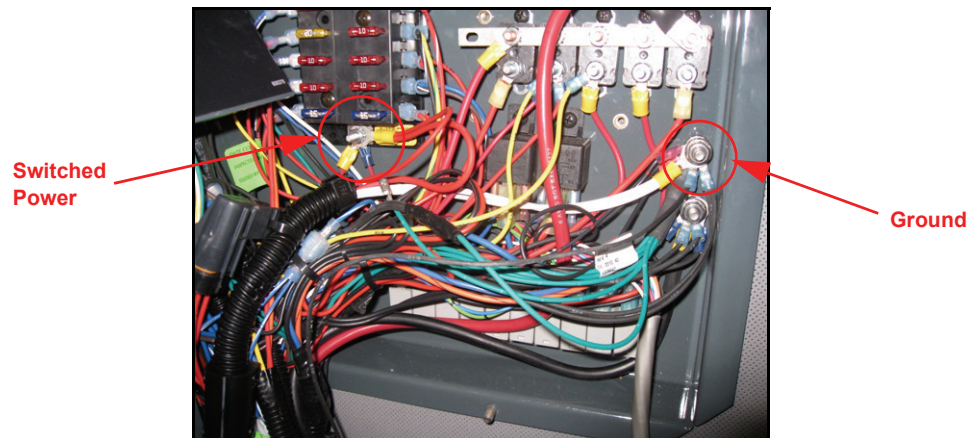
1. Locate and remove the CAN terminator from the field computer controller cable.
2. Connect the 6' CAN bus with tee cable (P/N 115-0171-326) to the open connector on the field computer controller cable.
3. Connect the CAN connector on the Hagie STS series AccuBoom cable (P/N 115-1001-044) to one of the open ends of the 6' CAN bus with tee cable.
4. Install the terminator removed in step 1 on the remaining end of the 6' CAN bus with tee cable.

Install the Logic Power and Ground Connections

FIGURE 7. Machine's Electrical Distribution Panel



1. Locate the electrical distribution panel behind the right-rear corner of the seat.
2. Remove the three knobs that secure the panel cover.

FIGURE 8. AccuBoom Cable Connected to Power and Ground

3. Locate a source of switched power and connect both red wires from the Hagie STS series AccuBoom cable (P/N 115-1001-044).
4. Locate a source of ground and connect both white wires from the AccuBoom cable.
5. Loop and tie-off any excess cable with cable ties.

CHAPTER

4

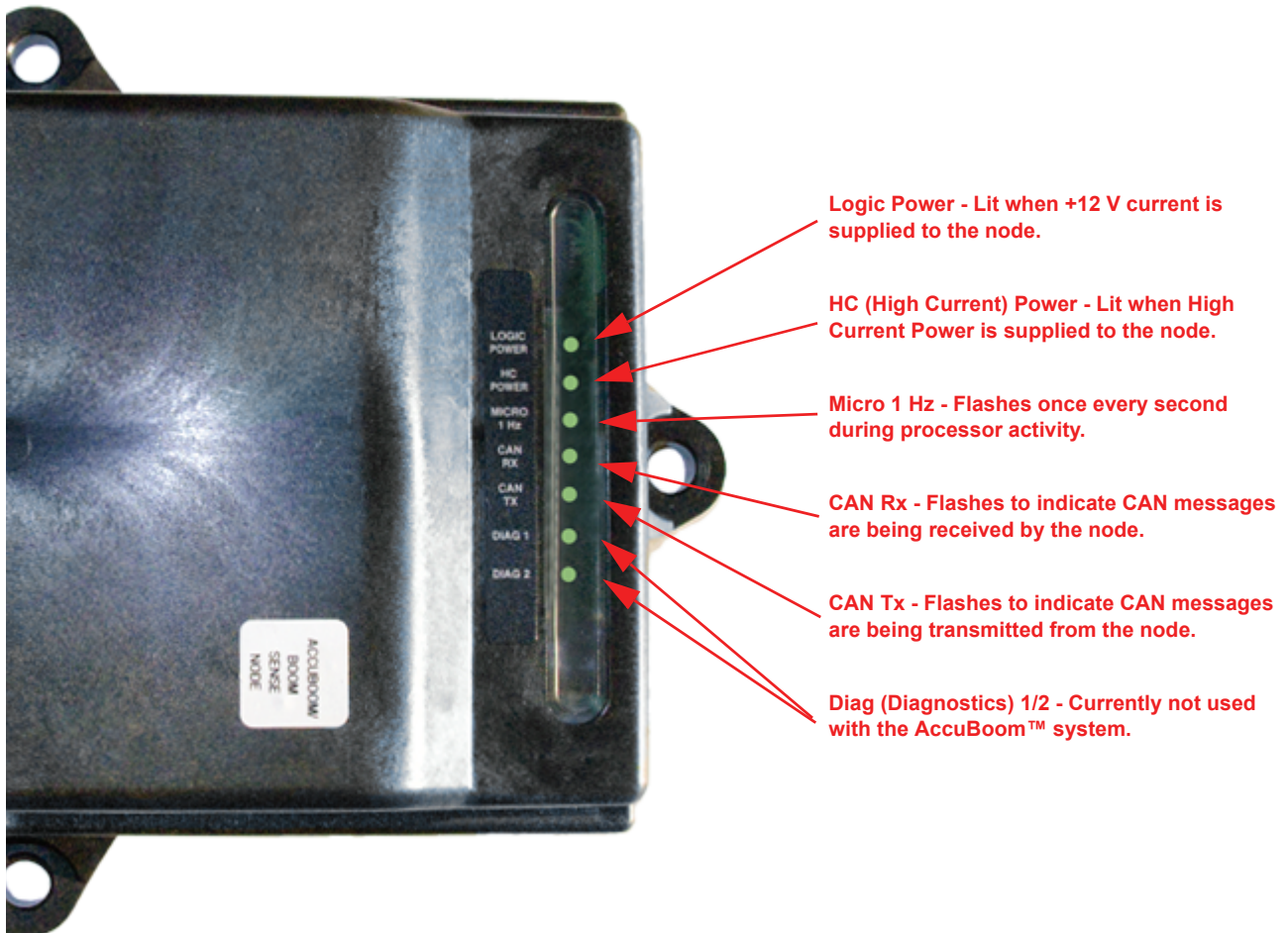
Troubleshooting

The AccuBoom CAN control node (P/N 063-0172-714) features several green light-emitting diodes (LEDs) which may be used to diagnose issues within the AccuBoom system.

Note: If the LEDs are not displayed as outlined in the figure below, check the CAN connections and the control cable connections on the node. If the issue persists, contact your local Raven dealer for additional technical support.

Note: All boom switches must remain in the On position while AccuBoom control is in operation.

FIGURE 1. AccuBoom CAN Control Node LEDs



A

AccuBoom Kit Contents 4

I

Important Safety Information 1

Installation 5

Connecting the AccuBoom Cable to the Machine's
Harness Cable 8

Installing Logic Power and Ground Connections 8

Installing the AccuBoom Cable and Node 5

Introduction 3

Point of Reference 4

Preparing for Installation 3

Recommendations 3

Tools Needed 3

P

Point of Reference 4

Preparing for Installation 3

R

Recommendations 3

T

Tools Needed 3

Troubleshooting 11

RAVEN

RAVEN INDUSTRIES

Limited Warranty

What Does this Warranty Cover?

This warranty covers all defects in workmanship or materials in your Raven Applied Technology Division product under normal use, maintenance, and service.

How Long is the Coverage Period?

Raven Applied Technology Division products are covered by this warranty for 12 months after the date of purchase. This warranty coverage applies only to the original owner and is nontransferable.

How Can I Get Service?

Bring the defective part and proof of purchase to your Raven dealer. If your dealer agrees with the warranty claim, the dealer will send the part and proof of purchase to their distributor or to Raven Industries for final approval.

What Will Raven Industries Do?

Upon confirmation of the warranty claim, Raven Industries will, at our discretion, repair or replace the defective part and pay for return freight.

What is not Covered by this Warranty?

Raven Industries will not assume any expense or liability for repairs made outside our facilities without written consent. Raven Industries is not responsible for damage to any associated equipment or products and will not be liable for loss of profit or other special damages. The obligation of this warranty is in lieu of all other warranties, expressed or implied, and no person or organization is authorized to assume any liability for Raven Industries.

Damages caused by normal wear and tear, misuse, abuse, neglect, accident, or improper installation and maintenance are not covered by this warranty.