

**Case IH Patriot 250 and New Holland
AccuBoom Installation Manual**

P/N 016-1001-085 Rev B 03/16

E21866

Disclaimer

While every effort has been made to ensure the accuracy of this document, Raven Industries assumes no responsibility for omissions and errors. Nor is any liability assumed for damages resulting from the use of information contained herein.

Raven Industries shall not be responsible or liable for incidental or consequential damages or a loss of anticipated benefits or profits, work stoppage or loss, or impairment of data arising out of the use, or inability to use, this system or any of its components. Raven Industries shall not be held responsible for any modifications or repairs made outside our facilities, nor damages resulting from inadequate maintenance of this system.

As with all wireless and satellite signals, several factors may affect the availability and accuracy of wireless and satellite navigation and correction services (e.g. GPS, GNSS, SBAS, etc.). Therefore, Raven Industries cannot guarantee the accuracy, integrity, continuity, or availability of these services and cannot guarantee the ability to use Raven systems, or products used as components of systems, which rely upon the reception of these signals or availability of these services. Raven Industries accepts no responsibility for the use of any of these signals or services for other than the stated purpose.

Chapter 1	<i>Important Safety Information</i>	1
Chapter 2	<i>Introduction</i>	3
	Preparing for Installation	3
	Recommendations	3
	Tools Needed	4
	Point of Reference	4
	Updates	4
	Kit Contents	5
Chapter 3	<i>AccuBoom Installation</i>	7
	Install the AccuBoom Node	7
	Install the AccuBoom Harness Cable	8
	Connect the Fence Row Nozzle	11
Chapter 4	<i>Section Mapping Setup</i>	13
	Envizio Pro/Pro 700	13
	Viper Pro	14
	SCS 5000	14
Chapter 5	<i>Troubleshooting</i>	15

CHAPTER

1

Important Safety Information

NOTICE

Read this manual and the operation and safety instructions included with your implement and/or controller carefully before installing the AccuBoom™ system.

- Follow all safety information presented within this manual.
- If you require assistance with any portion of the installation or service of your Raven equipment, contact your local Raven dealer for support.
- Follow all safety labels affixed to the AccuBoom system components. Be sure to keep safety labels in good condition and replace any missing or damaged labels. To obtain replacements for missing or damaged safety labels, contact your local Raven dealer.

When operating the machine after installing AccuBoom, observe the following safety measures:

- Be alert and aware of surroundings.
- Do not operate AccuBoom or any agricultural equipment while under the influence of alcohol or an illegal substance.
- Remain in the operator's seat in the machine at all times when AccuBoom is enabled.
- Disable AccuBoom when exiting the operator's seat and machine.
- Do not drive the machine on any public road when AccuBoom is enabled.
- Determine and remain a safe working distance from other individuals. The operator is responsible for disabling AccuBoom when the safe working distance has diminished.
- Ensure AccuBoom is disabled prior to starting maintenance on AccuBoom or the machine.

CAUTION

- To prevent electrical shock, disconnect the machine's battery connections before installing AccuBoom.
- Always verify that the power leads are connected to the correct polarity as marked. Reversing the power leads could cause severe damage to the equipment.
- Ensure that the power cable is the last cable to be connected.

CHAPTER

2

Introduction

Congratulations on your purchase of the Raven AccuBoom system! This system was designed to provide accurate and cost-efficient application by avoiding no-spray zones and eliminating wasteful overlaps.

This manual applies to the following machines:

MAKE: Case IH
MODEL: Patriot 250

MAKE: New Holland
MODEL: SP2500

Preparing for Installation

Before installing AccuBoom, park the machine where the ground is level, clean, and dry. Leave the machine turned off for the duration of the installation process.

During the installation process, follow good safety practices. Be sure to carefully read the instructions in this manual as you complete the installation process.

Recommendations

Raven Industries recommends the following best practices when installing the AccuBoom system:

- Use part numbers to identify the parts.
- Do not remove the plastic wrap from a part until it is necessary for installation.
- Recommended cable routing practices:
 - Locate available switched and battery power sources before installation.
 - Map out best available cable routes before installation.
 - Ensure cables are able to rest in a relaxed state and are not pinched, kinked, or stretched.
 - Route cables away from moving parts and heat sources.

Tools Needed

The following tools are recommended for installation of the AccuBoom system:

- SAE standard-sized wrenches
- Cable ties
- Set of tools

Point of Reference

The instructions in this manual assume that you are standing behind the machine, looking toward the cab.

Updates

Software and manual updates are available on the Raven Applied Technology website:

<http://www.ravenhelp.com>

At Raven Industries, we strive to make your experience with our products as rewarding as possible. One way to improve this experience is to provide us with feedback on this manual.

Your feedback will help shape the future of our product documentation and the overall service we provide. We appreciate the opportunity to see ourselves as our customers see us and are eager to gather ideas on how we have been helping or how we can do better.

To serve you best, please send an email with the following information to

techwriting@ravenind.com

- Case IH Patriot 250 and New Holland SP2500 AccuBoom™ Installation Manual
- Manual No. 016-1001-085 Rev. B
- Any comments or feedback (include chapter or page numbers if applicable).
- Let us know how long have you been using this or other Raven products.

We will not share your email or any information you provide with anyone else. Your feedback is valued and extremely important to us.


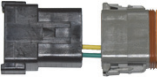




Thank you for your time.

Kit Contents

This section contains a list of the components that are included in the AccuBoom installation kit. Before beginning the AccuBoom system installation, compare the items in the kit with the components on this list. If you have questions about the kit, contact your Raven dealer

Note: The AccuBoom node (P/N 063-0172-316) is sold separately. Contact your local Raven dealer for ordering information..

TABLE 1. AccuBoom Installation Kit (P/N 117-1004-085)

Picture	Item Description	Part Number	Qty.
Not Pictured	Manual - Case IH Patriot 250 and New Holland SP2500 AccuBoom Installation	016-1001-085	1
	Cable - AccuBoom Harness	115-1001-045	1
	Cable - Fence Row Adapter	115-1001-048	1
	Bracket - Node Mounting	107-0171-951	1
	U-Bolt - 2-9/16" W x 3-1/2" L x 3/8" Thread	107-0171-616	2
	Bolt - 3/8"-16 UNC x 1-1/4" Zinc Plated Hex	311-0054-106	3
	Nut - 3/8"-16 Zinc Flanged Lock	312-1001-164	7

CHAPTER

3

AccuBoom Installation

These instructions are designed to assist in the installation of the AccuBoom system on Case IH Patriot 250 and New Holland SP2500 series machines. Refer to the Installation & Operation manual for the specific field computer being used for instructions on setting up the software and using the AccuBoom system.

Install the AccuBoom Node

FIGURE 1. AccuBoom Node Mounting Location



1. Identify the AccuBoom node (P/N 063-0172-316) mounting location to the left of the boom valve.

FIGURE 2. AccuBoom Node Installed



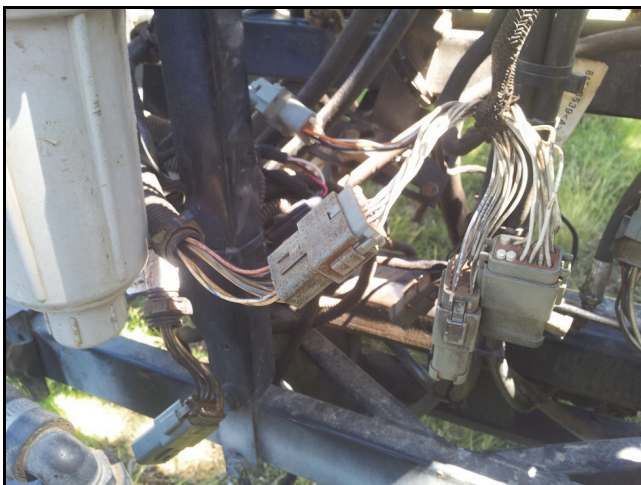
2. Mount the node to the node mounting bracket (P/N 107-0171-951) using three 3/8"-16 UNC x 1-1/4" zinc plated hex bolts (P/N 311-0054-106) and three 3/8"-16 zinc flanged lock nuts (P/N 312-1001-164).
3. Install the node mounting bracket on the left side of the machine's center rack cross-member using two 2-1/16" W x 3" L x 3/8" thread U-bolts (P/N 107-0171-609) and four 3/8"-16 zinc flanged lock nuts (P/N 312-1001-164).

Note: Install the mounting bracket so that the node cable connectors point down.

4. Install the two large, rectangular connectors of the AccuBoom harness cable (P/N 115-1001-045) into the correct ports of the node, tightening the bolts on the connectors to secure the connections.

Install the AccuBoom Harness Cable

FIGURE 3. Existing Machine Harness Connection



1. Locate and remove the cap from the 12-pin DT C522F connector.

2. Install the 12-pin connector from the AccuBoom cable (P/N 115-1001-045) on to the connector.
3. Reinstall the cap on the 12-pin connector on the installed AccuBoom cable.

FIGURE 4. AccuBoom Harness Cable Connection

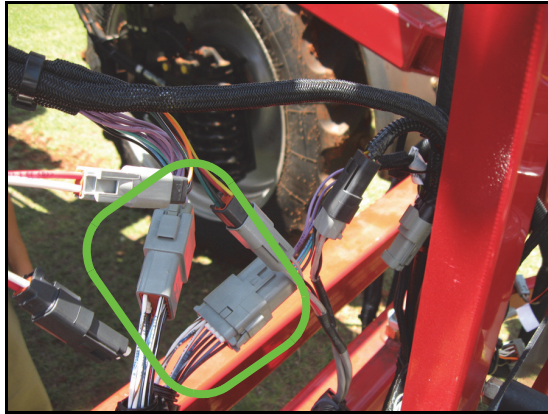


FIGURE 5. Machine's Existing CAN Connection



4. Locate and disconnect the machine's existing 4-pin CAN connection in front of the transducer on the center boom section.

Note: The machine's CAN connection may or may not have a terminator installed.

FIGURE 6. AccuBoom Harness Installed on Machine's CAN Connections



5. Install the mating 4-pin connectors of the AccuBoom cable on each end of the machine's CAN connections.

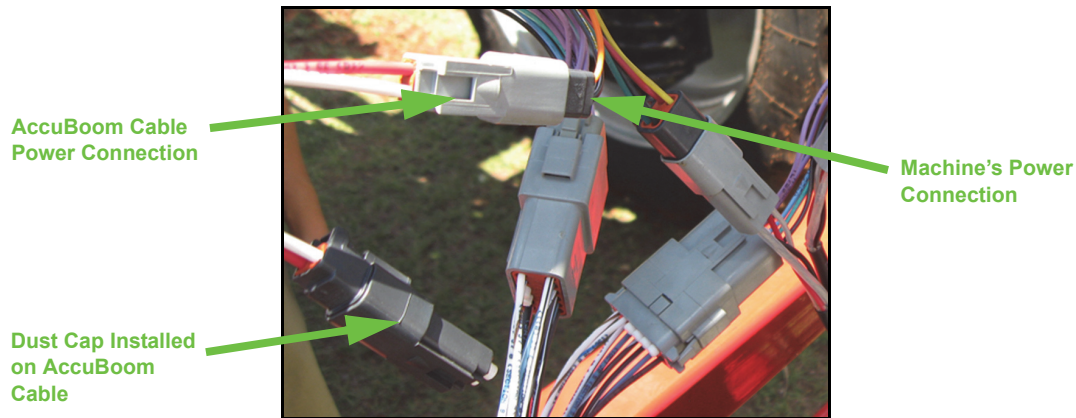
Note: *If the machine's CAN connection had a terminator installed, install it on the remaining CAN connection on the AccuBoom cable.*

FIGURE 7. Machine's Existing Power Connection



6. Locate the machine's existing 2-pin power connection in front of the pressure transducer.
7. Remove the dust cap from the machine's power connection.

FIGURE 8. AccuBoom Cable Power Connection



8. Install the mating 2-pin connector of the AccuBoom cable on the machine's power connection.
9. Install the dust cap removed in step 6 on the remaining AccuBoom cable power connection.

Connect the Fence Row Nozzle

FIGURE 9. FIGURE 6. Fence Row Nozzle Connection



1. Locate and disconnect the 12-pin Deutsch Case boom cable connection, located directly behind the cab.

FIGURE 10. FIGURE 7. Fence Row Adapter Cable Installed



2. Connect the fence row adapter cable (P/N 115-1001-048) to the corresponding connections on the machine harness cable.

CHAPTER**4*****Section Mapping
Setup***

This section contains section mapping settings that are used to program the AccuBoom controller. Refer to the Installation & Operation Manual and the appropriate section in this chapter for the specific field computer being used for programming and section mapping settings.

Envizio Pro/Pro 700

5, 6, or 7 Section	
Boom	Section Label
1	1
2	2
3	3
4	4
5	5
6	6
7	7

Viper Pro

7 Section		
Boom	Wired As	Display As
1	L	*
2	1	1
3	2	2
4	3	3
5	4	4
6	5	5
7	R	*

SCS 5000

7 Section		
Boom	Wired As	Display As
1		2
2		3
3		4
4		5
5		6

CHAPTER

5

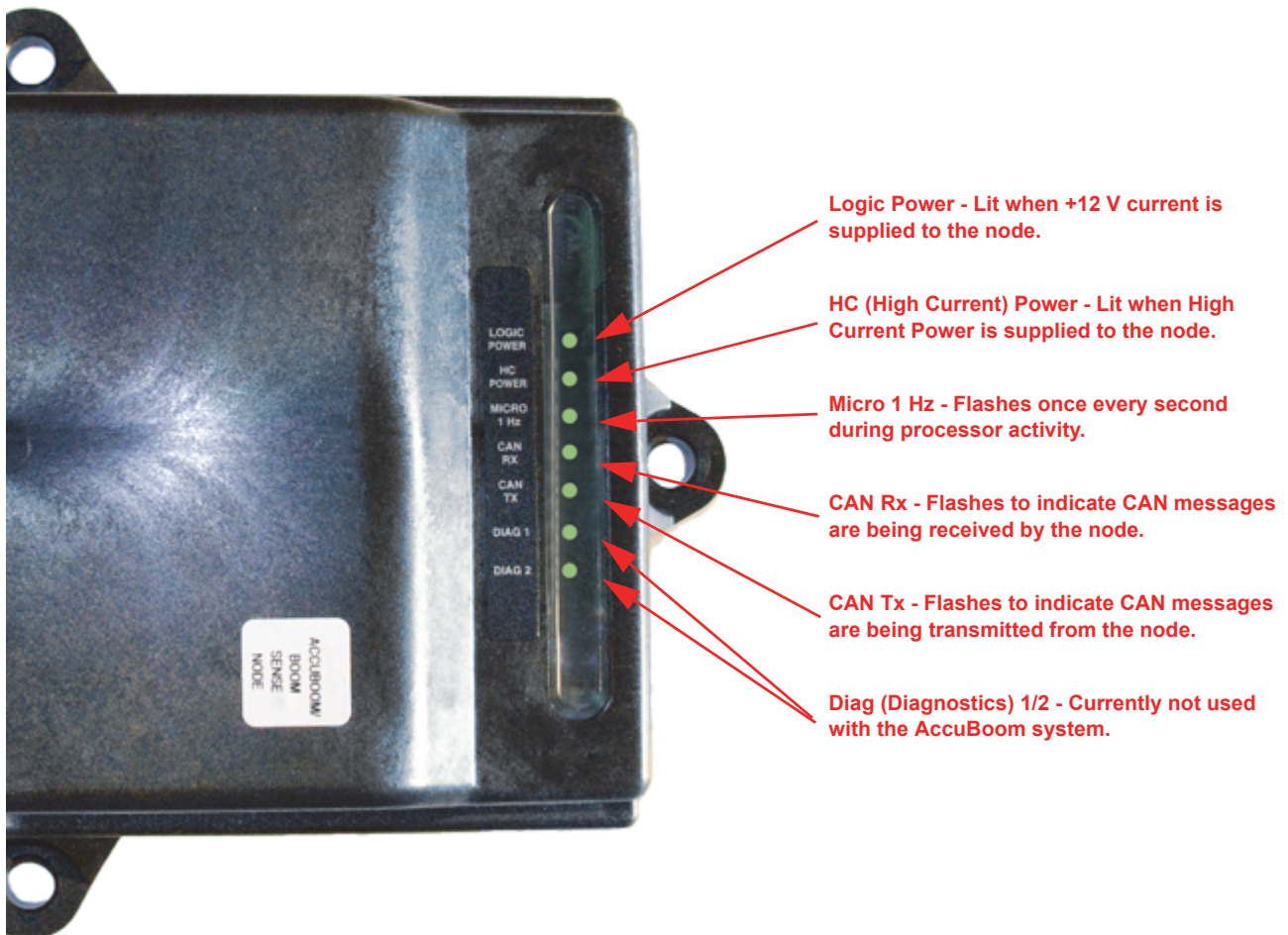
Troubleshooting

The AccuBoom CAN control node (P/N 063-0172-316) features several green light-emitting diodes (LEDs) which may be used to diagnose issues within the AccuBoom system.

Note: If the LEDs are not displayed as outlined in the figure below, check the CAN connections and the control cable connections on the node. If the issue persists, contact your local Raven dealer for additional technical support.

Note: All boom switches must remain in the On position while AccuBoom control is in operation.

FIGURE 1. AccuBoom CAN Control Node LEDs



A**AccuBoom Installation** 7

- Installing the AccuBoom Harness Cable 8
- Installing the AccuBoom Node 7

I**Important Safety Information** 1**Introduction** 3

- Kit Contents 5
- Preparing for Installation 3
 - Point of Reference 4
 - Recommendations 3
 - Tools Needed 4
- Updates 4

K**Kit Contents** 5**S****Section Mapping Setup**

- Envizio Pro/Pro 700 13
- SCS 5000 14
- Viper Pro 14

T**Troubleshooting** 15

RAVEN

Limited Warranty

What Does this Warranty Cover?

This warranty covers all defects in workmanship or materials in your Raven Applied Technology Division product under normal use, maintenance, and service when used for intended purpose.

How Long is the Coverage Period?

Raven Applied Technology products are covered by this warranty for 12 months from the date of retail sale. In no case will the Limited Warranty period exceed 24 months from the date the product was issued by Raven Industries Applied Technology Division. This warranty coverage applies only to the original owner and is non-transferable.

How Can I Get Service?

Bring the defective part and proof of purchase to your Raven dealer. If the dealer approves the warranty claim, the dealer will process the claim and send it to Raven Industries for final approval. The freight cost to Raven Industries will be the customer's responsibility. The Return Materials Authorization (RMA) number must appear on the box and all documentation (including proof of purchase) must be included inside the box to be sent to Raven Industries.

What Will Raven Industries Do?

Upon confirmation of the warranty claim, Raven Industries will (at our discretion) repair or replace the defective product and pay for the standard return freight, regardless of the inbound shipping method. Expedited freight is available at the customer's expense.

What is not Covered by this Warranty?

Raven Industries will not assume any expense or liability for repairs made outside our facilities without written consent. Raven Industries is not responsible for damage to any associated equipment or products and will not be liable for loss of profit, labor, or other damages. The obligation of this warranty is in lieu of all other warranties, expressed or implied, and no person or organization is authorized to assume any liability for Raven Industries.

Damages caused by normal wear and tear, misuse, abuse, neglect, accident, or improper installation and maintenance are not covered by this warranty.



Extended Warranty

What Does this Warranty Cover?

This warranty covers all defects in workmanship or materials in your Raven Applied Technology Division product under normal use, maintenance, and service when used for intended purpose.

Do I Need to Register My Product to Qualify for the Extended Warranty?

Yes. Products/systems must be registered within 30 days of retail sale to receive coverage under the Extended Warranty. If the component does not have a serial tag, the kit it came in must be registered instead.

Where Can I Register My Product for the Extended Warranty?

To register, go online to www.ravenhelp.com and select Product Registration.

How Long is the Extended Warranty Coverage Period?

Raven Applied Technology products that have been registered online are covered for an additional 12 months beyond the Limited Warranty for a total coverage period of 24 months from the date of retail sale. In no case will the Extended Warranty period exceed 36 months from the date the product was issued by Raven Industries Applied Technology Division. This Extended Warranty coverage applies only to the original owner and is non-transferable.

How Can I Get Service?

Bring the defective part and proof of purchase to your Raven dealer. If the dealer approves the warranty claim, the dealer will process the claim and send it to Raven Industries for final approval. The freight cost to Raven Industries will be the customer's responsibility. The Return Materials Authorization (RMA) number must appear on the box and all documentation (including proof of purchase) must be included inside the box to be sent to Raven Industries. In addition, the words "Extended Warranty" must appear on the box and all documentation if the failure is between 12 and 24 months from the retail sale.

What Will Raven Industries Do?

Upon confirmation of the product's registration for the Extended Warranty and the claim itself, Raven Industries will (at our discretion) repair or replace the defective product and pay for the standard return freight, regardless of the inbound shipping method. Expedited freight is available at the customer's expense.

What is Not Covered by the Extended Warranty?

Raven Industries will not assume any expense or liability for repairs made outside our facilities without written consent. Raven Industries is not responsible for damage to any associated equipment or products and will not be liable for loss of profit, labor, or other damages. Cables, hoses, software enhancements, and remanufactured items are not covered by this Extended Warranty. The obligation of this warranty is in lieu of all other warranties, expressed or implied, and no person or organization is authorized to assume any liability for Raven Industries.

Damages caused by normal wear and tear, misuse, abuse, neglect, accident, or improper installation and maintenance are not covered by this warranty.