



CAN Installation Manual

CaseIH SPX 4260 (Patriot Cab)

CHAPTER

1

INTRODUCTION

Congratulations on your purchase of the Raven AccuBoom system! This system is designed to provide worry-free turn on and turn off of your booms with respect to the as-applied coverage map. The following instructions are designed to assist you in the proper installation of the AccuBoom system. See the Installation and Operation Manual of your particular console for instructions on setting up the software and using the AccuBoom system.

Basic Kit Contents

- ◆ AccuBoom CAN Node
- ◆ Machine Specific or Standard Console Cable
- ◆ CAN Tee Cable: 6", 6', 12', 18', or 24' long
- ◆ Install Manual



Helpful Hint: If no CAN system currently exists on the machine, an additional CAN Power Tee Kit is required.



Important! 4x0/6x0 Console: All boom switches must be in the OFF position while AccuBoom control is in operation!
4x00, Viper (w/Boom Speed Node): All boom switches must be in the ON position while AccuBoom control is in operation!

Notes:

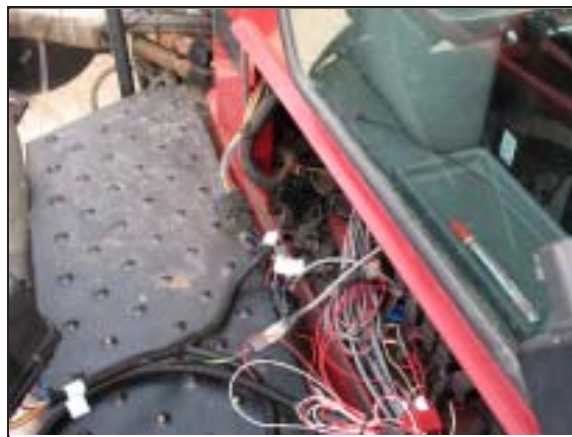
CHAPTER

2

INSTALLATION

Use the following procedure to properly install the CAN AccuBoom system.

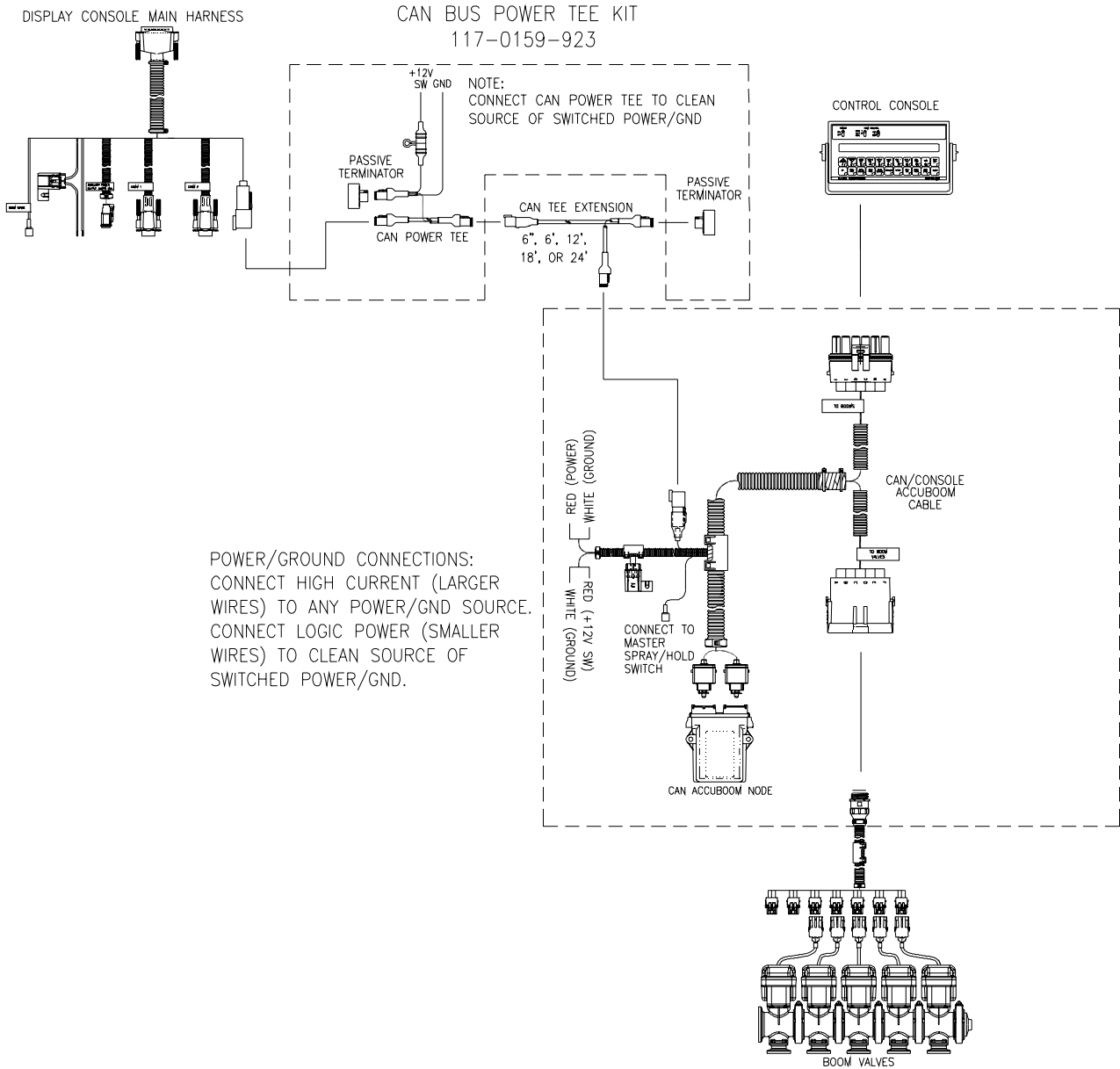
1. Remove access panel on right side of cab.
2. Locate 6-pin connector junction connecting boom valves to console.
3. 4x0/6x0 Console: disconnect 6-pin connector junction and tee in AccuBoom harness.



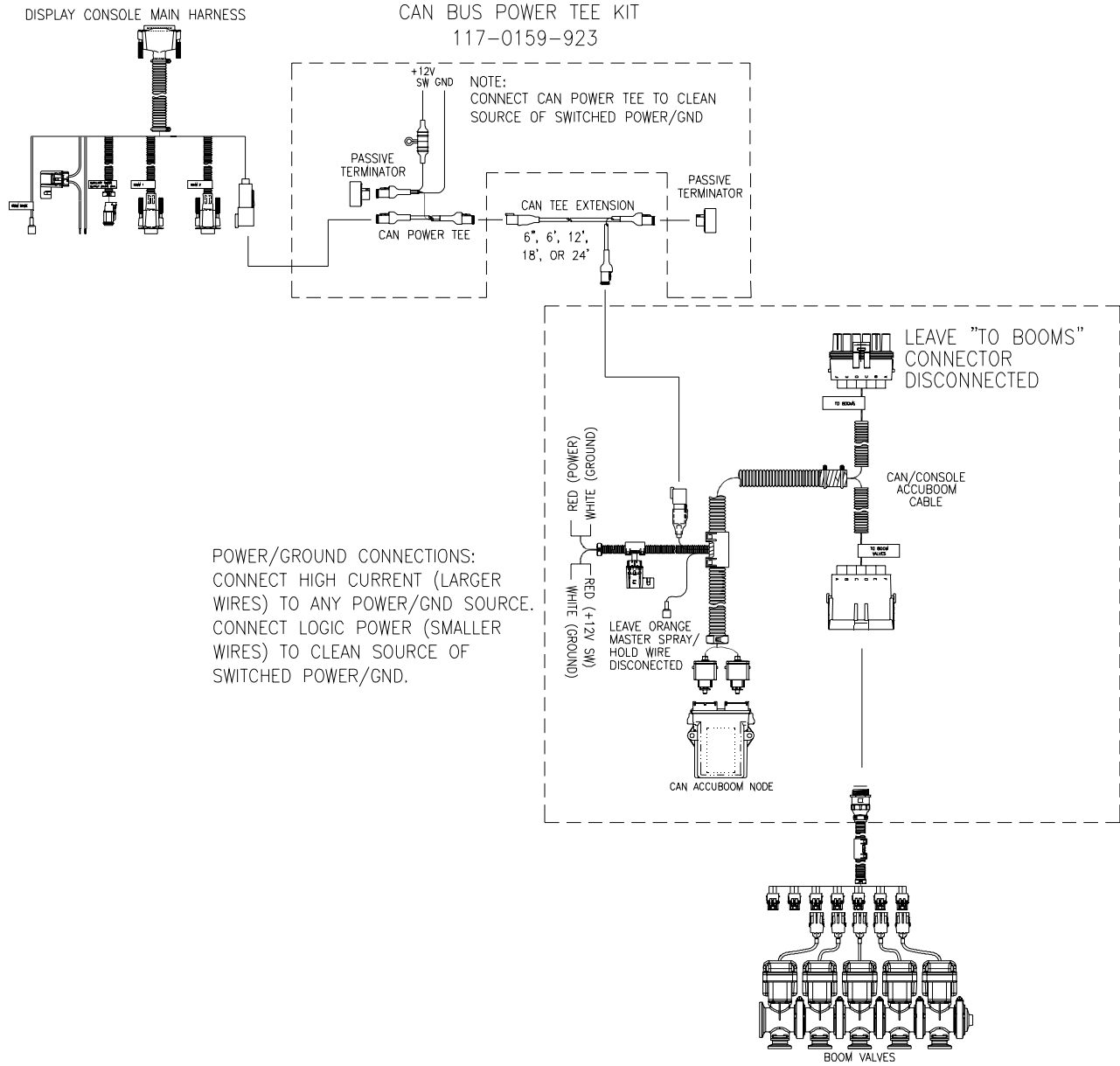
AccuBoom Harness Tee in

4. 4x00, Viper (w/Boom Speed Node): disconnect 6-pin connector junction and connect "To Boom Valves" connector from AccuBoom harness to sprayer main harness. Leave "To Booms" connector and remaining connector from sprayer main harness disconnected.
5. Connect power (red) and ground (white) leads as shown in the following schematic.

CASE 4260 (PAT. CAB) ACCUBOOM INSTALL SCHEMATIC 4X0/6X0 CONTROLLER



CASE 4260 (PAT. CAB) ACCUBOOM INSTALL SCHEMATIC 4X00, VIPER (W/BM SPD NODE) CONTROLLER



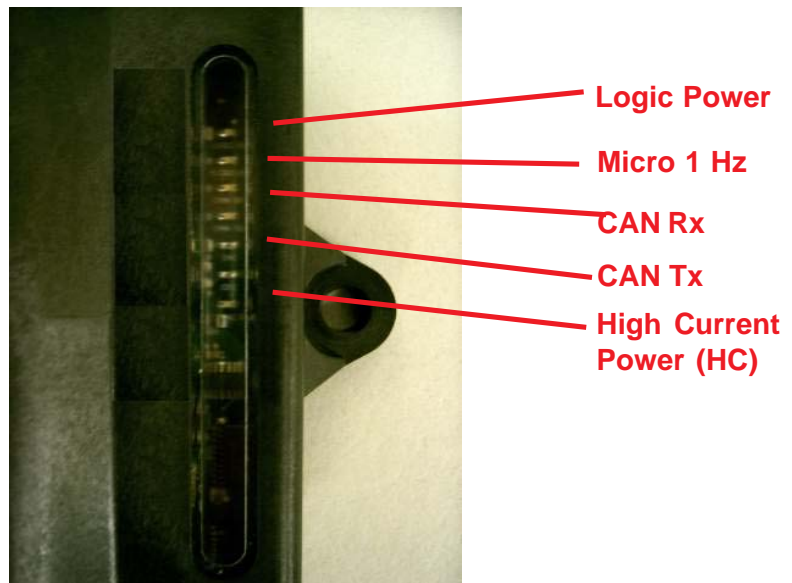
Notes:

CHAPTER

3

DIAGNOSTICS

The CAN AccuBoom Node P/N 063-0172-316 has additional features to allow the user to diagnose the AccuBoom system. The CAN AccuBoom node has a plastic window in the case that allows the user to view green diagnostic lights. The picture below shows the positioning and function of each of the LED lights.



- ◆ **Logic Power:** Lit when 12VDC logic power is available at the node.
- ◆ **Micro 1 Hz:** Flashes at 1 Hz interval when processor is active.
- ◆ **CAN Rx:** Flashes when CAN messages are being received.
- ◆ **CAN Tx:** Flashes when CAN messages are being transmitted.
- ◆ **High Current Power:** Lit when High Current Power is applied to the node.

Notes:



RAVEN INDUSTRIES LIMITED WARRANTY

WHAT IS COVERED?

This warranty covers all defects in workmanship or materials in your Raven Flow Control Product under normal use, maintenance, and service.

HOW LONG IS THE COVERAGE PERIOD?

This warranty coverage runs for 12 months from the purchase date of your Raven Flow Control Product. This warranty coverage applies only to the original owner and is not transferrable.

HOW CAN YOU GET SERVICE?

Bring the defective part, and proof of date of purchase, to your local dealer. If your dealer agrees with the warranty claim, he will send the part, and proof of purchase to his distributor or to Raven for final approval.

WHAT WILL RAVEN INDUSTRIES DO?

When our inspection proves the warranty claim, we will, at our option, repair or replace the defective part and pay for return freight.

WHAT DOES THIS WARRANTY NOT COVER?

Raven Industries will not assume any expense or liability for repairs made outside our plant without written consent. We are not responsible for damage to any associated equipment or product and will not be liable for loss of profit or other special damages. The obligation of this warranty is in lieu of all other warranties, expressed or implied, and no person is authorized to assume for us any liability. Damages caused by normal wear and tear, misuse, abuse, neglect, accident, or improper installation and maintenance are not covered by this warranty.



Raven Industries
Flow Controls Division
P.O. Box 5107
Sioux Falls, SD 57117-5107

Toll Free 800-243-5435
Fax 605-331-0426
www.ravenprecision.com
fcinfo@ravenind.com

Notice: This document and the information provided are the property of Raven Industries, Inc. and may only be used as authorized by Raven Industries, Inc. All rights reserved under the copyright laws.