

4

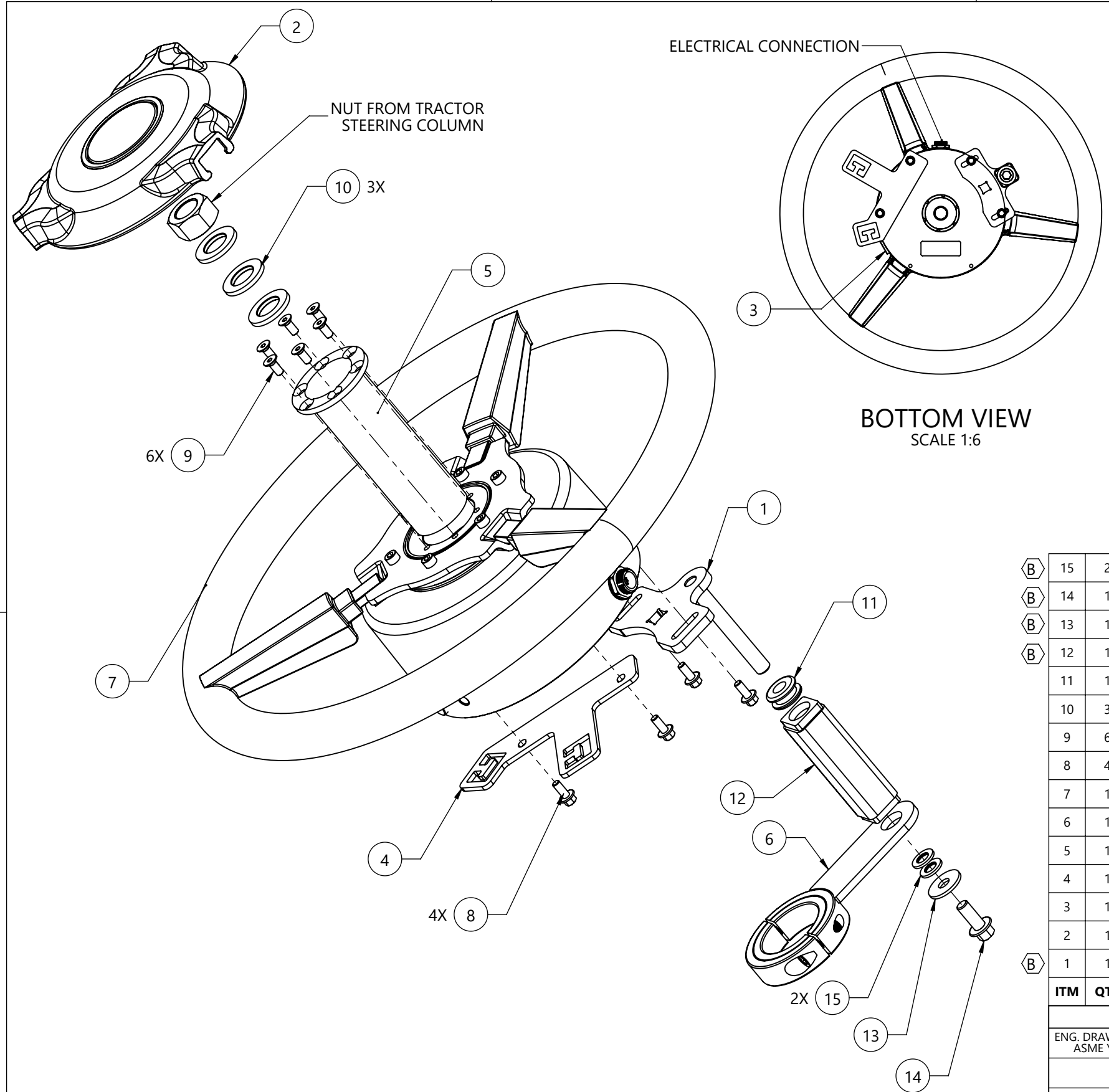
3

2

1

REVISIONS

LTR.	ECO	REVISION DESCRIPTION	DATE	APPROVED	ZONE
A	47873	INITIAL RELEASE	11/08/23	B PRCHAL	
B	48493	REPLACED ANTI-ROTATION STEM SYSTEM	01/30/24	B PRCHAL	A2, B2



ITEM	QTY	PART NUMBER	DESCRIPTION	SPECIAL NOTE
B 15	2	313-6000-013K	WASHER, ISO 7089, M8, STEEL, ZINC PLATED, 96 HR+	
B 14	1	311-4035-054K	FLANGED HEX BOLT, ISO 4162, M8-1.25 X 20MM, 8.8 STEEL	
B 13	1	313-6002-013K	WASHER, LARGE, DIN 9201, M8, CARBON STEEL	
B 12	1	116-4050-014	WELDMENT, GROMMET HOLDER, M8 X 90MM	
	1	315-0000-034	GROMMET, TYPE D, 10MM ID, 20MM OD, 16MM HOLE DIA.	
	3	313-6000-025K	WASHER, ISO 7089, M16, STEEL, ZINC PLATED, 96 HR+	
	6	311-4070-090K	SCREW, HEX SOCKET FLAT HEAD, DIN 7991, M5-0.8 X 12MM, 8.8 STEEL	
	4	311-4035-002K	FLANGED HEX BOLT, ISO 4162, M5-0.8 X 12MM, 8.8 STEEL	
	1	117-5030-318	KIT, DIRECSTEER, MOTOR	
	1	116-4050-051	WELDMENT, CCH, FLANGED COLUMN CLAMP	
	1	107-4050-014	SPLINE ADAPTER, DIRECT DRIVE, 5/8", 36T, TAPERED, 124MM	
	1	107-4001-093	BRACKET, GENERIC, STEERING MOTOR CABLE ROUTING AID	
	1	107-0172-865	BUTTON, DIRECSTEER, RED ANODIZED	
	1	063-4001-071	KNOB COVER, NON-ADJUSTABLE STEERING COLUMN NON-BRANDED	
B 1	1	063-4001-098	ASSEMBLY, ANTI-ROTATION STEM 75MM, MOUNTING PLATE 32MM	

- NOTES:
- NON-ADJUSTABLE KNOB COVER (ITEM 2) AND RED DISENGAGE BUTTON (ITEM 3) ARE INCLUDED IN KIT 117-5132-011

<b>RELATED SPECIFICATIONS</b> ENG. DRAWING PRACTICES ASME Y14.100-2013			TITLE <b>INSTALL ASSEMBLY SUPPLEMENTAL, CNH EXPERIENCE, CNH TRACTOR GROUP 02</b>			
USED ON: GUID. / STEERING			DRAWN: T BASS APPROVED: B PRCHAL	DATE: 11/08/23 11/08/23	SIZE: B CODE: 14979 DRAWING NUMBER: 054-5132-202	REV: B
PROPRIETARY AND CONFIDENTIAL INFORMATION OF <b>RAVEN INDUSTRIES INC.</b> THIS DRAWING AND THE INFORMATION HEREON ARE RAVEN INDUSTRIES INC. PROPERTY AND MAY BE USED BY OTHERS ONLY AS AUTHORIZED IN WRITING BY RAVEN INDUSTRIES INC. - ALL RIGHTS RESERVED UNDER THE COPYRIGHT LAWS.		MATERIAL: SEE PARTS	LIFECYCLE STATE: PRE-PROD	UNITS: METRIC	EST. WEIGHT: 4.333 KG LOCATION: SF, SD SCALE: 1:3 SHEET: 1 OF 1	

4

3

2

1