

---

# ***Valve Advance Addendum***

---

## ***Overview***

This document provides instructions on the Valve Advance feature added to the following:

- Raven Viper Pro software version 3.3 and higher
- Raven Envizio Pro software version 2.3 and higher

The Valve Advance feature also requires version 1.50 firmware for the corresponding product control node(s). If a product control node must be updated to utilize the Valve Advance feature, contact a local Raven dealer for assistance.

## ***Updates***

Updates for Raven manuals as well as software updates for Raven consoles are available at the Raven Applied Technology Division web site:

[www.ravenprecision.com](http://www.ravenprecision.com)

Sign up for e-mail Alerts to be notified when updates for your Raven Applied Technology products are available on the Raven web site.

---

## ***Valve Advance***

The Valve Advance feature should only be used with Standard, Fast or Fast Close valves.

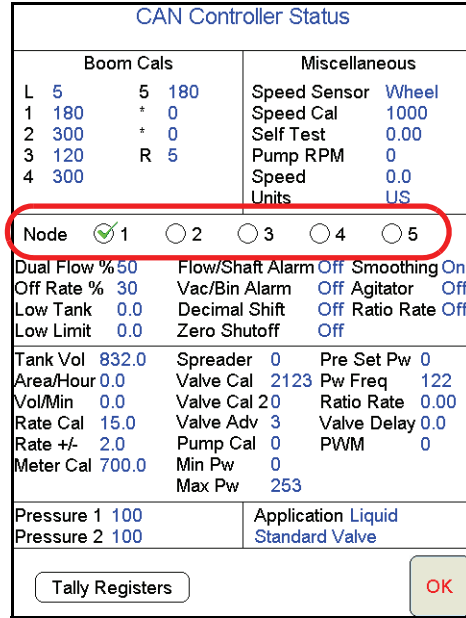
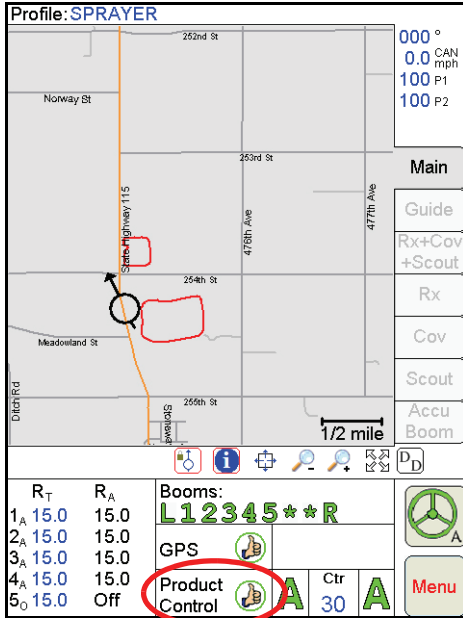
**Note:** *The assigned product control node must have software version 1.50 or higher to utilize the Valve Advance feature.*

This feature allows the operator to set the amount of time (in seconds) which the control valve will remain open after boom sections are toggled off while in automatic rate control mode. A value of 1-9 means an advance of 1-9 seconds respectively. A value of 0 means no advance. This setting may be used in conjunction with the valve delay for low rate applications to build up pressure when the master switch is toggled on. For best results, approach the headlands at consistent speeds while turning boom sections off.

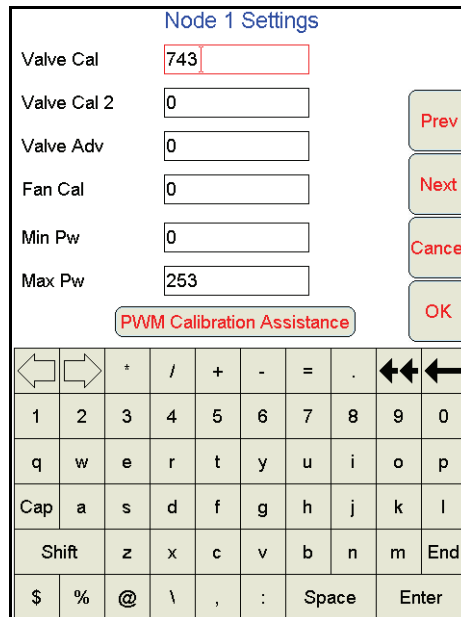
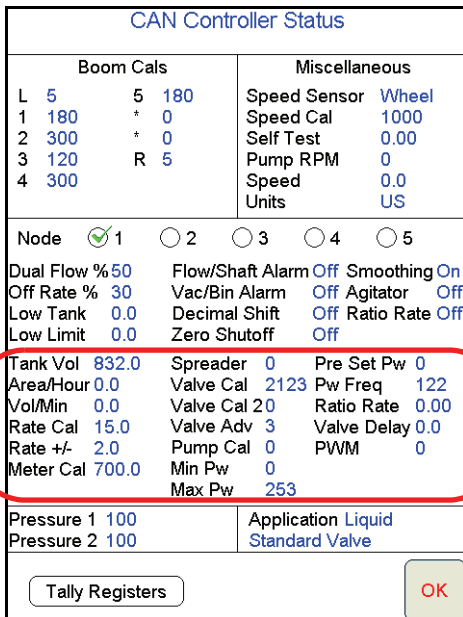
# Valve Advance on the Viper Pro

To access the Valve Advance feature on the Viper Pro console:

1. Touch the Product Control area at the bottom of the Viper Pro main screen.



2. On the CAN Controller Status screen, select the node number for the product which the Valve Advance feature will be used.
3. Touch within Data Box 2 area to display the Node Settings screen for the selected node and touch the Next button until the Valve Adv. setting is displayed on the screen.



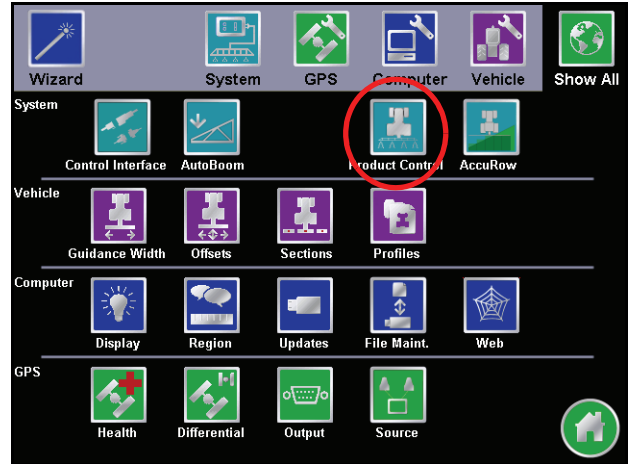
4. Use the on-screen keyboard to set the desired Valve Advance value.

## Valve Advance on the Envizio Pro

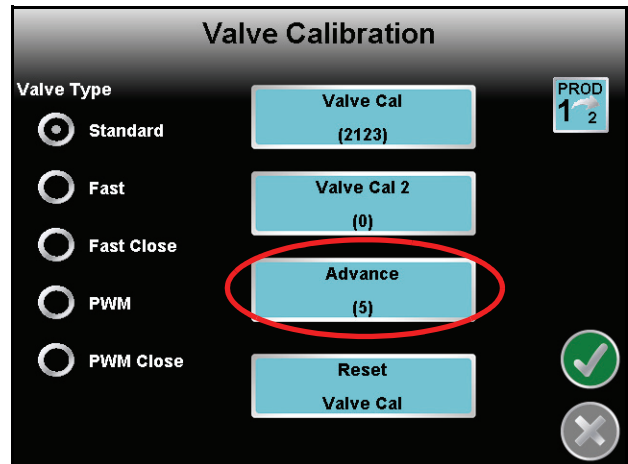
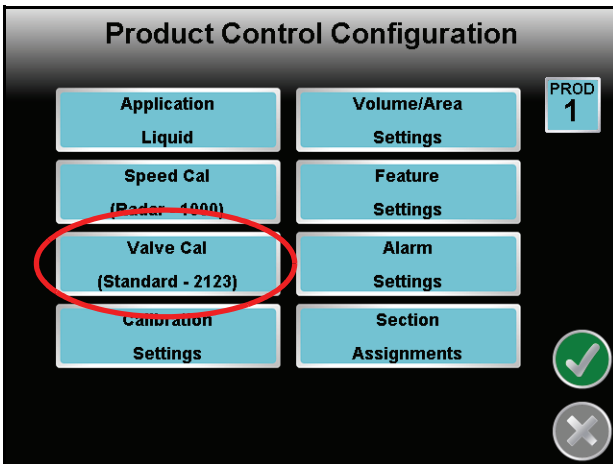
**Note:** The Advance button is only displayed if a Standard, Fast or Fast Close valve is selected and if the assigned product control node has software version 1.50 or higher.

To access the Valve Advance feature on the Envizio Pro console:

1. Touch the Tools icon on the Envizio Pro home screen and select the Product Control icon in the System menu.



2. Touch the Valve Cal button on the Product Control Configuration screen and select the Advance button on the Valve Calibration screen.



3. Use the on-screen keypad to enter the desired Valve Advance value.