

# VSN INSTALLATION GUIDE FOR ANALOG AUXILIARY VIDEO DISPLAY

FIGURE 1. Installation Kit Contents (P/N 117-2020-007)

	ITEM #	QTY	PART #	DESCRIPTION	OEM P/N
	1	1	053-0159-072	BOX, SHIPPING	N/A
	2	1	063-0173-094	DISPLAY, ANALOG VIDEO	N/A
	3	1	115-0172-608	CABLE, VIDEO ADAPTER, 8 PIN TO 5 PIN	N/A
	4	1	107-0172-737	BRACKET, VSN, OVERVIEW DISPLAY TO CR7 MOUNT	N/A
	5	1	115-2020-041	CABLE, VSN, ANALOG VIDEO ADAPTER	N/A
	6	1	053-0159-074	ENVELOPE, PLASTIC	N/A
	7	2	311-0007-039	SCREW, MACHINE, 8-32 X 1/2", PAN HEAD, PHILLIPS	N/A
	8	4	312-4000-053	NUT, NYLON LOCK, #8-32	N/A
	9	2	311-0007-045	SCREW, MACHINE, 8-32 X 3/8", PAN HEAD, PHILLIPS	N/A
	10	10	313-2300-307	WASHER, FLAT, STEEL, #8	N/A
(B)				*REMOVED	
(B)	11	1	103-0001-039	RAM 1.5" BALL FOR 1" RAILS	N/A
(B)	12	1	103-0001-035	MOUNT, RAM, DOUBLE SOCKET FOR 1.5" BALL, MEDIUM	N/A
(B)	13	1	103-0001-034	BASE, DIAMOND, RAM, 1.5" BALL	N/A

NOTE: This kit is in support of a CR7 already installed in a tractor cab.

## INSTALL BRACKET

1. Unscrew the two Phillips screws connecting the RAM mount interface to the back of the CR7.

NOTE: The removed screws will be used later in the installation.

2. Remove the RAM mount.

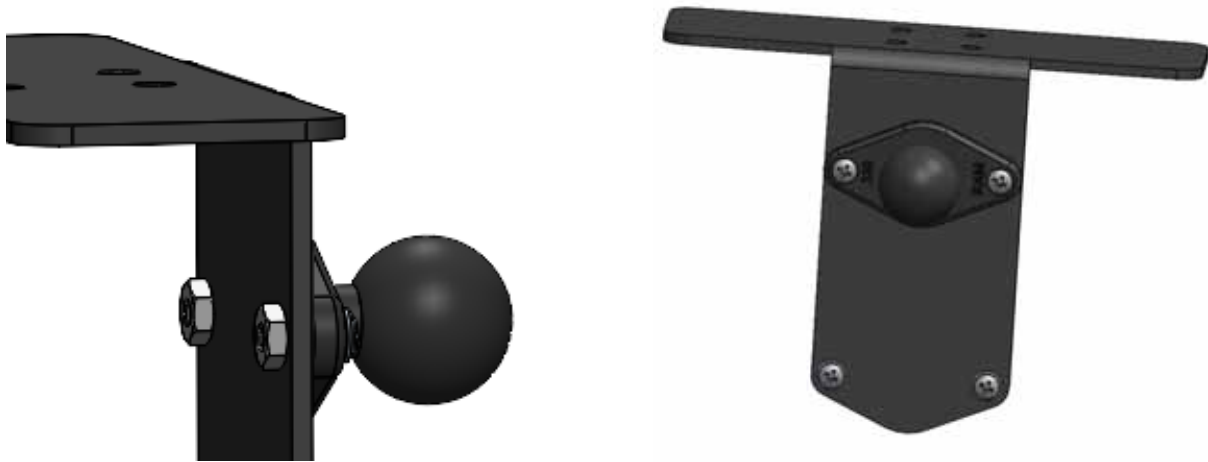
FIGURE 2. RAM Mount Screws



- 
3. Install the included RAM mount onto the bracket.
  4. Lock it into place using the provided 8-32 hex bolts and nuts.

FIGURE 3. RAM Mount Installed onto Bracket

---



5. Install the bracket onto the CR7 using the removed Phillips screws and four washers.

**NOTE:** A washer is required on the head of each screw and between the bracket and the CR7 for each screw.

FIGURE 4. Bracket Installation

---



**IMPORTANT:** Two washers are used on each of the CR7 screws to ensure proper length. Torque between 9 and 11 in-lbs.

FIGURE 5. Installed Bracket on CR7

---



NOTE: The included RAM mount ball and socket arm will be used to secure the bracket with the displays to the handrails in the cab.



---

6. Install the overview display bracket onto the top surface of the bracket using either pair of diagonal holes.

FIGURE 6. Bracket Installation

---

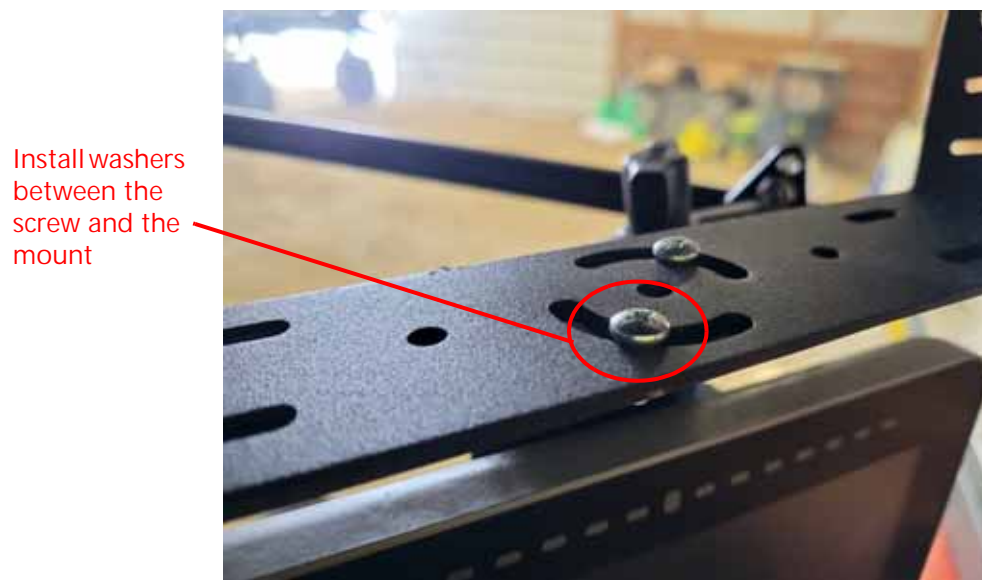
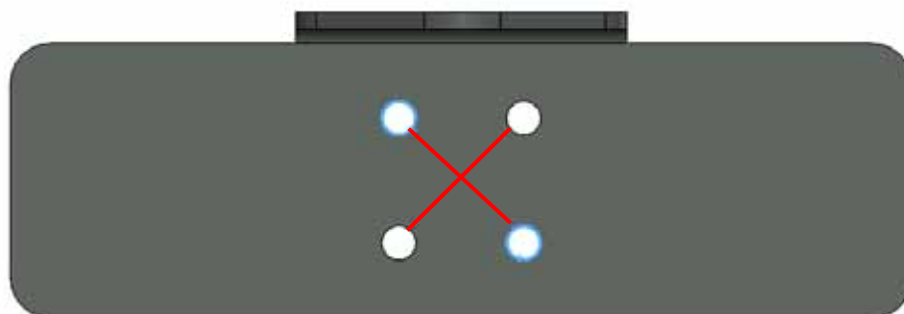


FIGURE 7. Diagonal Holes on Top Surface of the Bracket

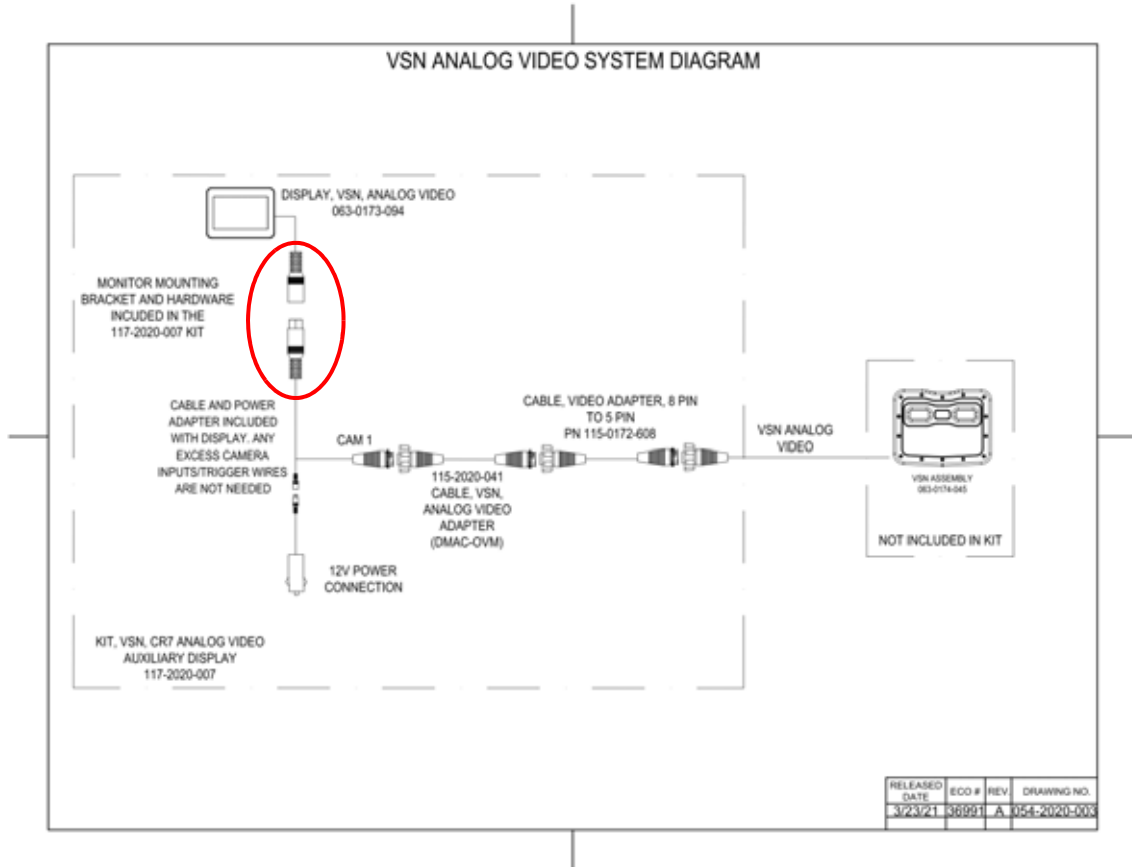
---



## CONNECT CABLES

7. Connect the cable included with the display to the cable harness on the rear of the display.

FIGURE 8. VSN Analog Video System Diagram



8. Connect the accessory port cable and plug it into an open 12V accessory port on the machine.

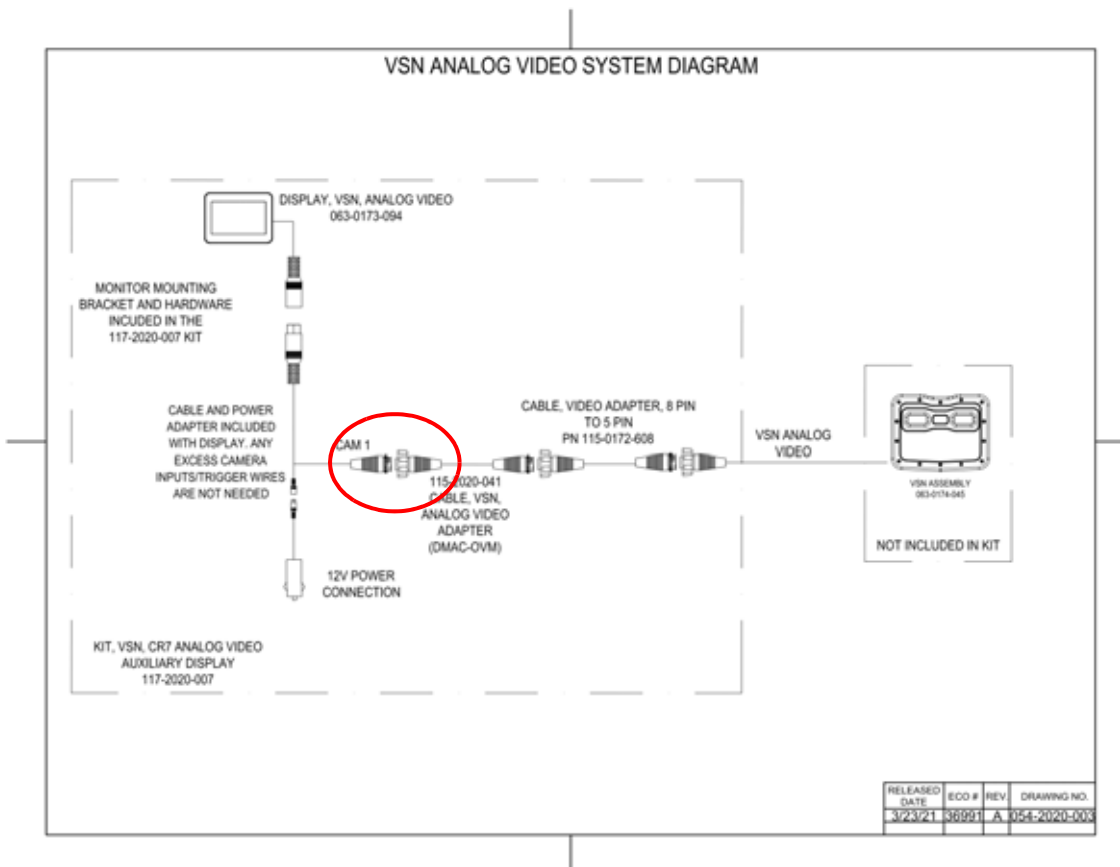
FIGURE 9. Accessory Port

Accessory port provides power to the system.



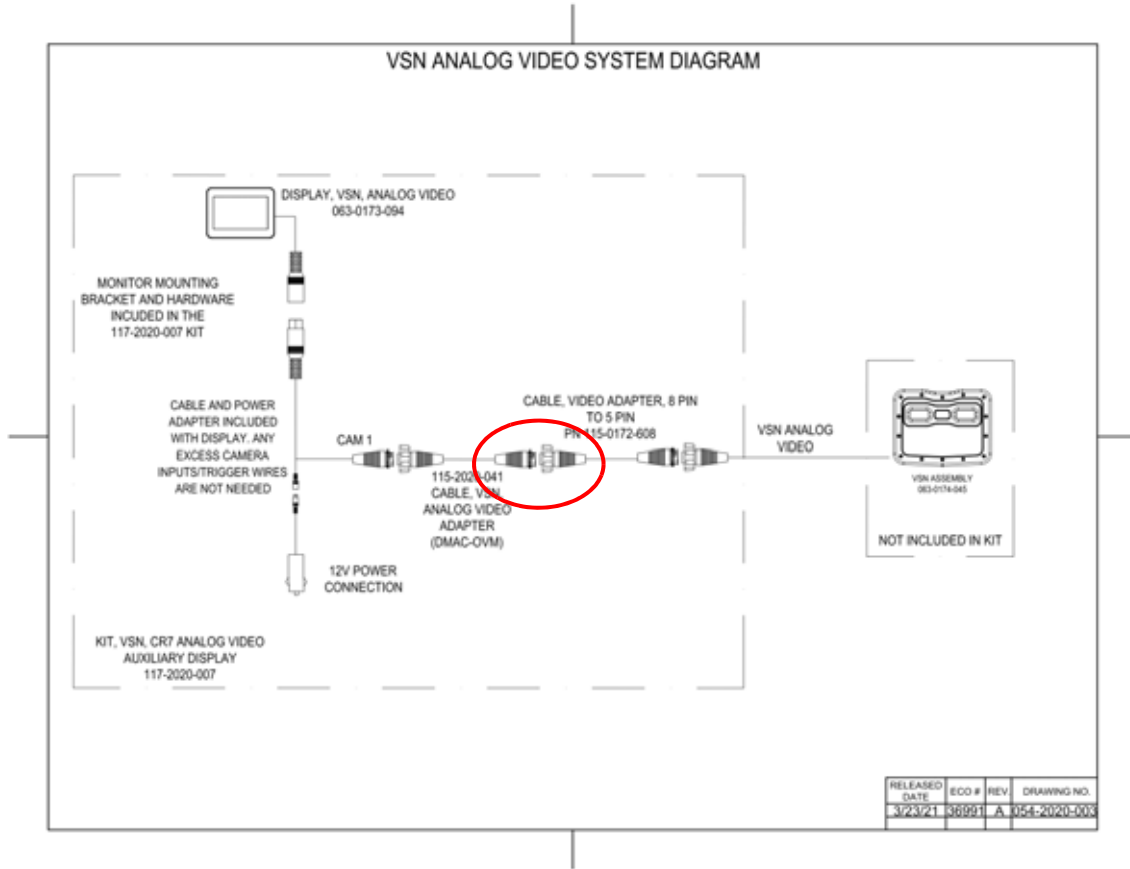
9. Connect the analog adapter cable (P/N 115-2020-041) to the CAM 1 connection.

FIGURE 10. VSN Analog Video System Diagram



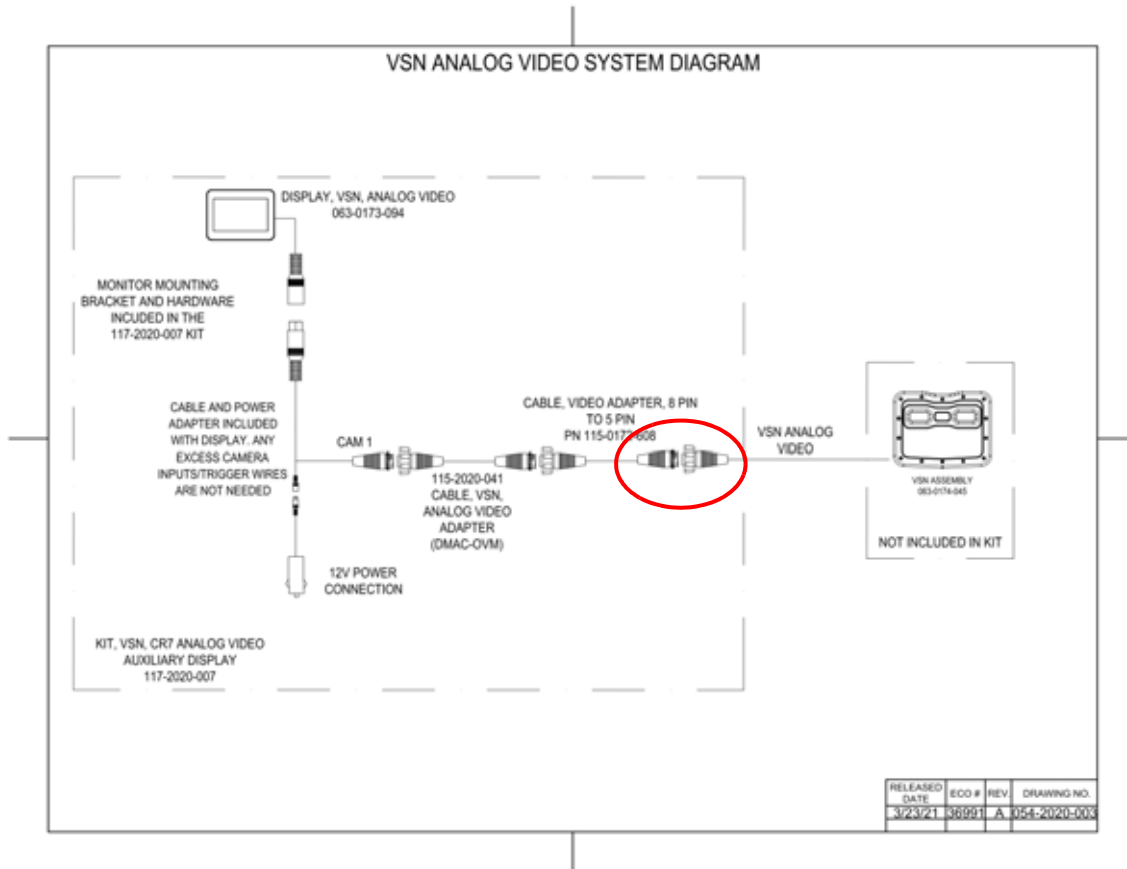
10. Connect the video adapter cable (P/N 115-0172-608) to the analog adapter cable (P/N 115-2020-041).

FIGURE 11. VSN Analog Video System Diagram



11. Connect the VSN analog video connector to the connector on the video adapter cable (P/N 115-0172-608).

FIGURE 12. VSN Analog Video System Diagram



12. Secure extra cables and cover trigger wires that are not needed.