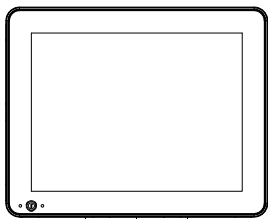
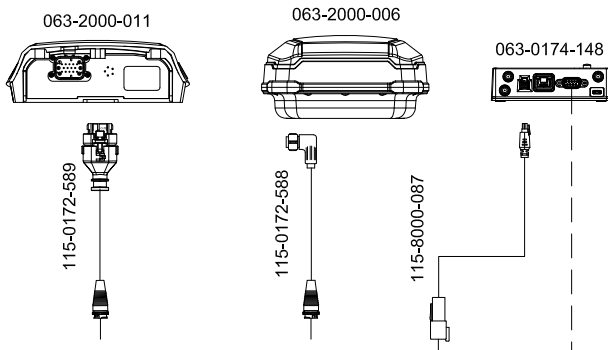


SYSTEM DRAWING, TRIMBLE READY, CR12, SC1 LVL 1, W/O IBBC

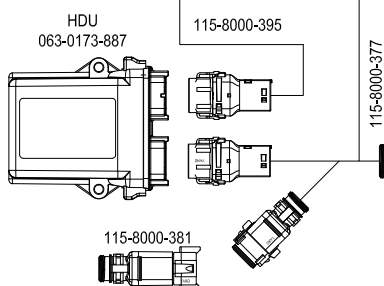
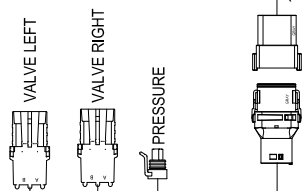
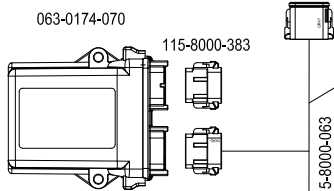
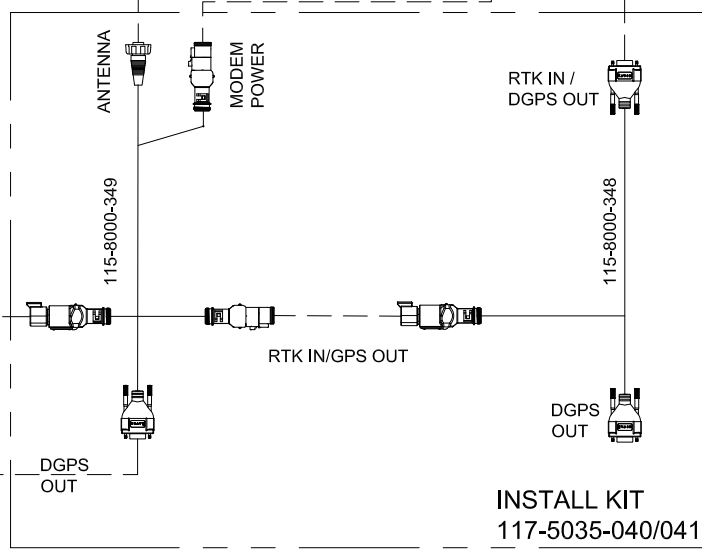
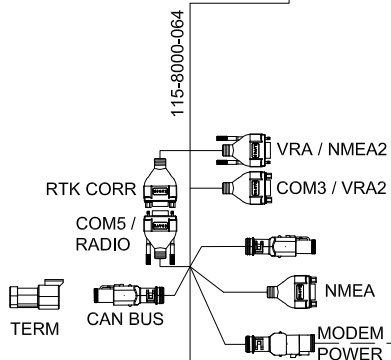
CONSOLE, CR12, UT UNLOCK
117-2300-001/005
CONSOLE, V4+, UT UNLOCK
117-5010-068/069



KIT, 500S, SBAS
117-2000-020
KIT, 700S, SBAS/GS/RTK
117-2000-030 THRU -034



KIT, TRIMBLE READY, CR12,
SC LVL1, W/O IBBC
117-5035-032



CONNECT TO WAS
(NOT INCLUDED IN KIT)
115-8000-226

INSTALL KIT
117-5035-040/041

RELEASED DATE	ECO #	REV.	DRAWING NO.
5/6/2021	37267	A	054-5035-032