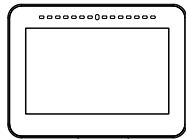
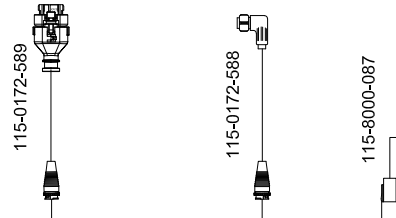
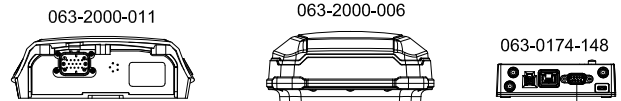


# SYSTEM DRAWING, TRIMBLE READY, CR7, SC1 LVL 1, W/ IBBC

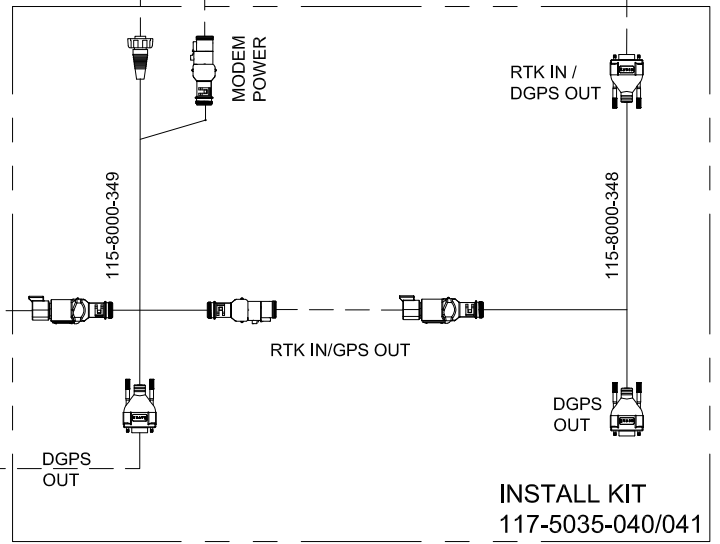
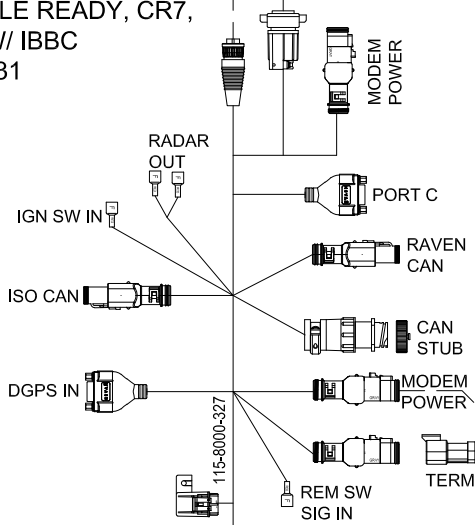
CONSOLE, CR7, UT UNLOCK  
117-2295-014



KIT, 500S, SBAS  
117-2000-020  
KIT, 700S, SBAS/GS/RTK  
117-2000-030 THRU -034

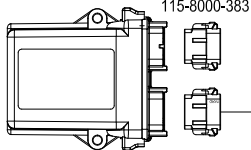


KIT, TRIMBLE READY, CR7,  
SC LVL1, W/ IBBC  
117-5035-031



INSTALL KIT  
117-5035-040/041

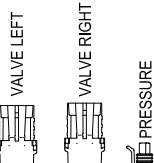
063-0174-070



115-8000-383

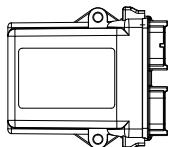
115-8000-063

CONNECT TO WAS  
(NOT INCLUDED IN KIT)  
115-8000-226



WAS

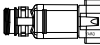
HDU  
063-0173-887



115-8000-394

115-8000-377

115-8000-381



IBBC - 408-4002-131  
SOLD SEPERATELY

115-8000-060

BATTERY GND  
BATTERY 12V

RELEASED DATE	ECO #	REV.	DRAWING NO.
5/6/2021	37267	A	054-5035-031