



# **CRX & RS1 REGISTRATION SLINGSHOT PORTAL**

016-8000-046EN REV. A2

**Configuration manual**  
(English) (Original)

**RAVEN**



## PREFACE

The manual contains important instructions that should be complied with when commissioning, operating and servicing the SBGuidance system.

This manual has been compiled with the utmost care. Raven Europe assumes no responsibility for any errors or omissions in this document.

Any comments or questions can be sent to [service-eu@ravenind.com](mailto:service-eu@ravenind.com).

**Raven Europe or any of its suppliers will accept no liability for physical or material damage caused whilst using the SBGuidance system.**

The installed Raven system produces less than 70dB (A) noise.

This installation guide uses a number of concepts for extra attention to a few things:



**Tip!:**

*Provides recommendations on how certain activities can be performed much easier.*



**Please note!:**

*Indicates certain problems that the user should take note of.*



**Caution!:**

*Indicates that the machine can be damaged.*



**Warning!:**

*Indicates a risk of injury.*

## DISCLAIMER

### WARNING!

- The safety instructions contained in the manuals of the tractor or implements must be complied with at all times.
- Always switch off the tractor before installing or repairing hydraulic and electrical components of the SBGuidance system.
- It is strictly prohibited to use the SBGuidance system on public roads.
- It is strictly prohibited to leave a driving vehicle unattended when the SBGuidance system is switched on. The driver is always responsible for the direction and course of the vehicle.
- To prevent injury or fire, replace defective fuses only with fuses of the same type and amperage.
- The SBGuidance the operating system is not able to detect and avoid obstacles. If there is an obstacle in your path, you will always need to take action for it to be avoided.
- Only allow authorized/qualified persons to operate the system. Authorized/qualified persons are defined as: persons who have read and understood the manual, have been given instructions by a product specialist, and who are both physically and mentally fit and able to operate the system.
- The system contains moving parts! Make sure the immediate environment is clear of people before operating the system.
- In case of system failure or breakdown switch of the tractor and disconnect the electrical power source to avoid further damage. Contact your dealer for further instructions on how to repair your system.
- Always wear personal protective equipment when operating/adjusting/repairing the system outside of the tractor cab.
- In order to prevent power surges from occurring, always start the machine first, before initiating the SBGuidance control system.

### PAY ATTENTION!

- Only touch the touch-screen with your finger or by using a special touch-screen stylus/pen. Operating the touch-screen with sharp objects may cause permanent damage to the screen.
- Always consult your supplier as to which products are best suited first before cleaning the touch-screen with chemicals or alcohol.
- If the terminal is not used for a long period, better remove the terminal from the tractor and store in a heated environment. This will extend the life span of the electronic components.
- To prevent theft, it is better to not let the terminal and GPS-antenna unattended in the tractor on the field.

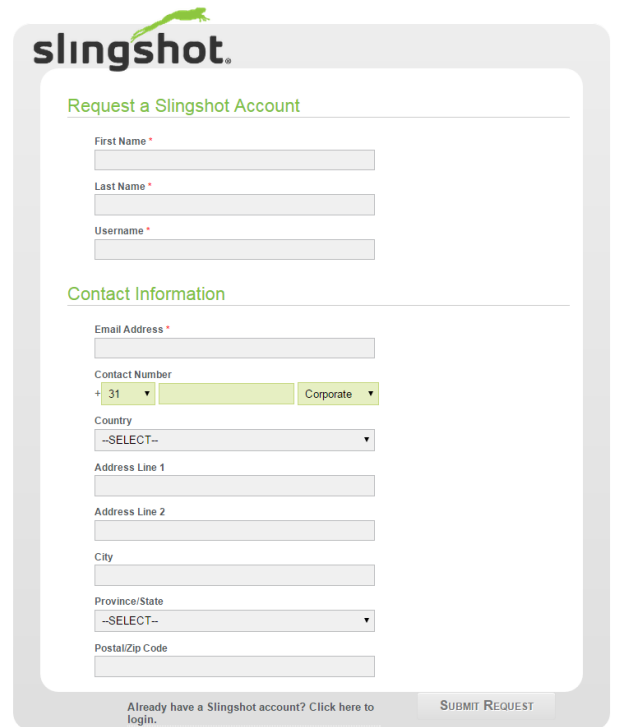
## CONTENTS

PREFACE.....	3
DISCLAIMER.....	4
CONTENTS.....	5
1 SIGN UP SLINGSHOT FIELD HUB.....	6
2 REGISTRATION.....	10
2.1 REGISTER FIELD COMPUTER.....	10
2.2 REGISTER RS1 ANTENNA.....	11

## 1 ACTIVATION SLINGSHOT FIELD HUB

The next steps have to be completed to sign up a Slingshot Field Hub in the Slingshot Portal:

1. Open the link: <https://portal.ravenSlingshot.com/>
2. Login with username and password. When you do not have an account, create one by using *Request Account* (Figure 1). To make sure the account has the right permissions, please contact Raven Europe.
3. When the account is correct and you are logged in, open *Manage > Subscriptions > New Activation* (Figure 2).



The screenshot shows the 'Request a Slingshot Account' form. It includes the following fields and options:

- Request a Slingshot Account** (Section Header)
- First Name \*
- Last Name \*
- Username \*
- Contact Information** (Section Header)
- Email Address \*
- Contact Number: 31 (dropdown), Corporate (dropdown)
- Country: --SELECT-- (dropdown)
- Address Line 1
- Address Line 2
- City
- Province/State: --SELECT-- (dropdown)
- Postal/Zip Code
- Already have a Slingshot account? Click here to login.
- SUBMIT REQUEST (button)

FIGURE 1 REQUEST SLINGSHOT ACCOUNT

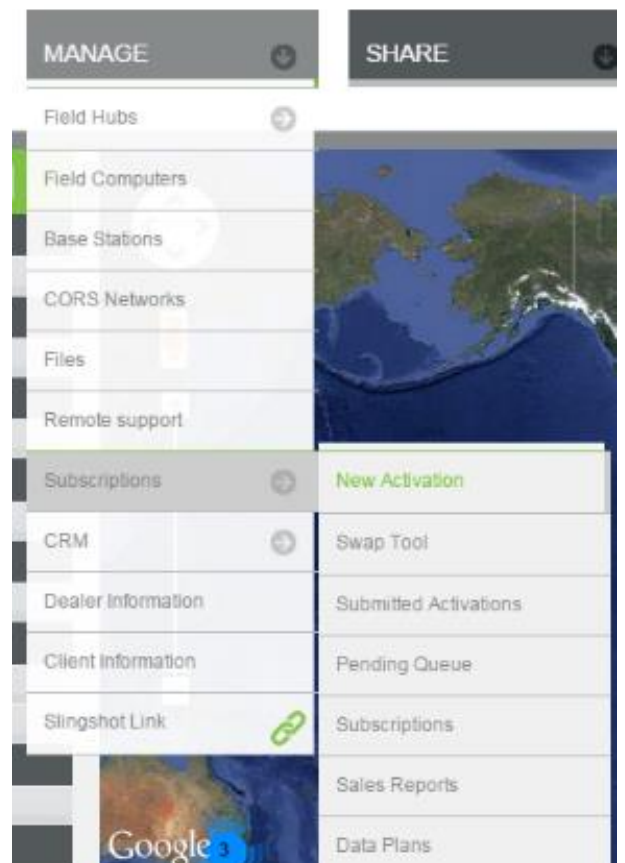


FIGURE 2 NEW ACTIVATION SLINGSHOT FIELD

4. A new wizard (Start activation) is now open, select *Field Hub Activation* (Figure 3).
5. A new wizard opens, enter the following information (Figure 4):
  - *Modem ID/IMEI*: This number is on the Slingshot Field Hub
  - *Cellular Data*: Select *No Data Activation Required*.
  - *Correction Unlock Options*: Select *Yes*.
  - After the checkmark 'yes' is set, the wizard expects more information for the Correction Unlock.
  - Select the option *CORS RTK*. After this option is selected the wizard expands again. See next page.

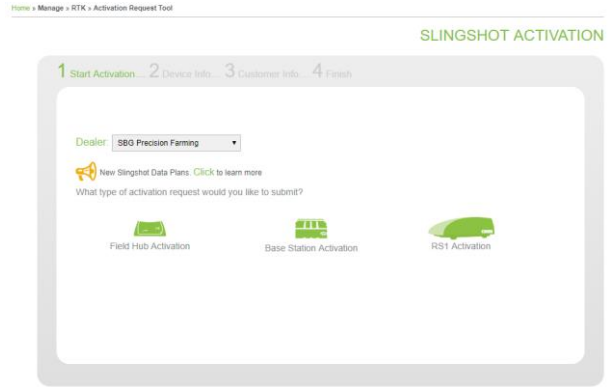


FIGURE 3 STEP 1 ACTIVATION PROCEDURE SLINGSHOT FIELD HUB.

### Enter First Device

Modem ID, IMEI, or ESN(d) \*

356853055934030

### Cellular Data

Please select the appropriate data provider: \*

No Data Activation Required ▼

[Learn](#) about Slingshot data bundles

### Subscription Information

Silver Subscription Included Through Dec 31, 2020

### Corrections

Do you want to set up RTK, or CORS services for this field hub? \*

Yes

No

Purchase correction unlock

Which service type would you like to set-up for your default correction profile?

Slingshot RTK

CORS RTK

FIGURE 4 STEP 2 ACTIVATION PROCEDURE SLINGSHOT FIELD HUB.

- *CORS Network*: Enter the Correction Data Supplier.
- *Correction Format*: Choose the format of the Correction Signal.
- *Mount point*: Choose the mount point or stream of the network.
- *Username*: Type the username of the CORS network for the customer.
- *Password*: Type the password of the CORS network for the customer.
- *Dealer PO#*: Fill in 0000.

**CORRECTION UNLOCK OPTIONS**

Do you want to unlock RTK, CORS, or Slingshot GS services for this field hub? \* Part #077-7000-028

- Yes
- No

Which service type would you like to set-up for your default correction profile?

- Slingshot RTK
- CORS RTK
- Slingshot GS

**CORS PROFILE INFORMATION**

Please enter the information below to create the CORS Profile for this field hub.

**CORS Network**

**Correction Format \***

**Mount Point \***

**Username \***

**Password \***

**DEALER PO #**

**SAVE DEVICE**

FIGURE 5 STEP 2 ACTIVATION PROCEDURE SLINGSHOT FIELD HUB (CONTINUATION).

After the data has been entered, select *Save Device* and press *next*. A new wizard with the activation information is opened (Figure 6). After a check of the entered data press *next* again.

**DEVICES TO ACTIVATE**

DEVICE	FEATURES	DETAILS	REQUIRES
353367042837059	<ul style="list-style-type: none"> <li>Correction Unlock</li> <li>File Transfer <i>free</i></li> <li>Fleet View Basic <i>free</i></li> <li>Internet Access <i>free</i></li> <li>Remote Support <i>free</i></li> </ul>	CORS Network: MoveRTK (NL) rctmv3: VRS_GG_RTCM3.0 Username: mrs01 Password: 0000 Dealer PO#: No_Invoice_SBG	No

**ADD ANOTHER DEVICE**

FIGURE 6 ACTIVATION INFORMATION.



Step 3 of the activation form is to add a customer to the Slingshot Field Hub. At the top of this step is the name of the dealer, please check this before a customer is added.

If the name of the dealer is correct, fill in the customer information. When the customer is already a Slingshot Customer, you can search in the list of existing customers. When it is a new Slingshot customer, enter the information. It is needed to fill in all the information before the step can be finished. Select *Next* on the bottom of the screen. In the last step (*Step 4, Figure 8*) nothing has to be entered. Select *Finish* to finish the activation form.

1 START ACTIVATION... 2 DEVICE INFO... 3 CUSTOMER INFO... 4 FINISH

DEALER: SBG PRECISION FARMING

CUSTOMER: SBG PRECISION FARMING CHANGE

Company  
SBG Precision Farming

First Name  
Maurice

Last Name  
Vollebregt

Address Line 1  
Hoorseweg 22

Address Line 2

City  
Middenmeer

Zip/Postal Code  
1775 RB

Country  
Netherlands

State/Province  
Noord-Holland

Phone Number  
+31 628710230

Fax Number  
+31

Email  
maurice.vollebregt@sbg.nl

Contact Method \*  
 PHONE  FAX  EMAIL  OTHER

PREVIOUS

FIGURE 7 STEP 3 OF THE ACTIVATION PROCEDURE

1 START ACTIVATION... 2 DEVICE INFO... 3 CUSTOMER INFO... 4 FINISH

NOTES

Please enter any additional information you would like to communicate.

PREVIOUS

FIGURE 8 STEP 4 OF THE ACTIVATION PROCEDURE

## 2 REGISTRATION

At the installation of a CRx system the dealer has to register the Field Computer on the SlingShot Portal. This is a requirement for functionalities like Remote Support and receiving RTK signal (if ordered).

### 2.1 REGISTER FIELD COMPUTER

1. For the registration of the Field Computer on the SlingShot Portal some data is needed. This is the partnumber (P/N), the barcode, and serial number (S/N). You will find this on the back side of the Field Computer (Figure 9).
2. Now go to [portal.ravenslingshot.com](http://portal.ravenslingshot.com) and log in. Go to Manage and press on Hardware Registration. Fill in the Part Number and Barcode. Note; both the Part Number and Barcode need to be filled in before the 'Hardware Found' message appears. At owner select the name of the dealer. At name fill in what type of terminal it is, so CR7 or CR12 and behind that the last five digits of the Serial Number (S/N). You will find the Serial Number also on the back side of the terminal. It is also possible to enter the name of the customer behind the serial number in the name textbox.
3. Now click on Submit, if everything went fine the following message will show up: Hardware Updated.



FIGURE 9 NECESSARY NUMBERS

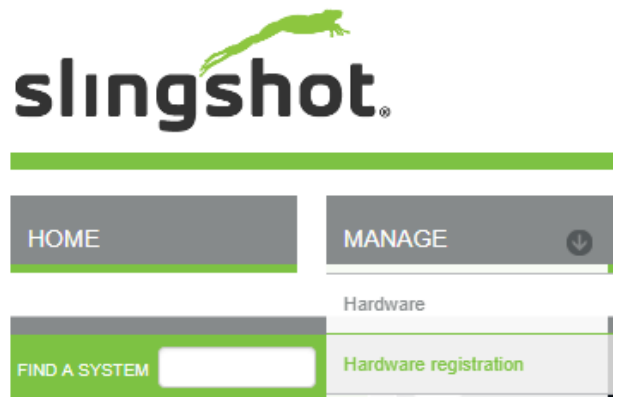


FIGURE 10 MANAGE HARDWARE > REGISTRATION

Enter Hardware Registration Details

Part Number*	<input type="text" value="10630173875"/>	✓ Hardware Found
Barcode*	<input type="text" value="5475495"/>	✓ Hardware Found
Owner*	<input type="text" value="SBG Precision Farming"/>	
Name*	<input type="text" value="CR7 29974"/>	
	<input type="button" value="Submit"/>	

FIGURE 11 NUMBERS FILLED IN ON PORTAL

## 2.2 REGISTER RS1 ANTENNA

1. When a RS1 antenna is used click on Manage > Subscriptions > New activation on the SlingShot Portal (Figure 4). Select the Dealer and click on RS1 Activation.
2. Fill in the Modem ID, IMEI or ESN (d). The IMEI of the internal Slingshot can be found in the Slingshot UT at Cellular Information (Figure 4).
3. Select "No Data Activation Required" at Cellular Data. At Subscription Information a Silver or Gold subscription can be chosen. If the customer doesn't want to use RTK accuracy select "no" at Correction Unlock Options and press Save Device (figure 5).
4. If "yes" is chosen select CORS RTK and select the right CORS Network, Correction Format, Mountpoint, Username and Password. The customer will receive this information from RTK correction provider. Press Save Device.
5. A new screen appears, press Next. Information of Customer must be filled in. When all the required fields are filled press Next (Figure 6). If there are any special notes then can be filled in the last screen of registration

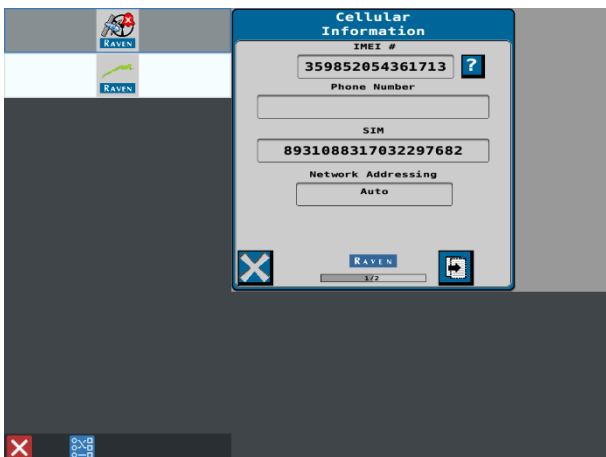


FIGURE 4 IMEI NUMBER RS1

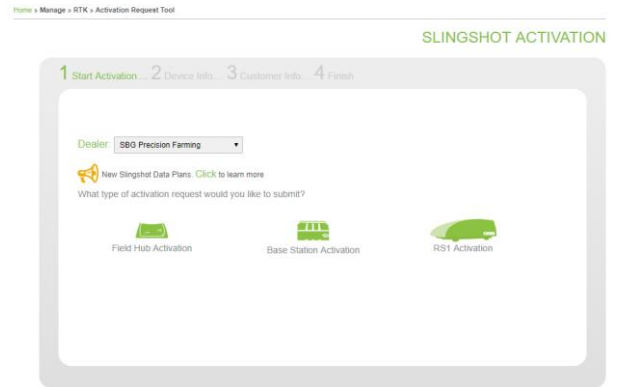


FIGURE 5 START NEW ACTIVATION

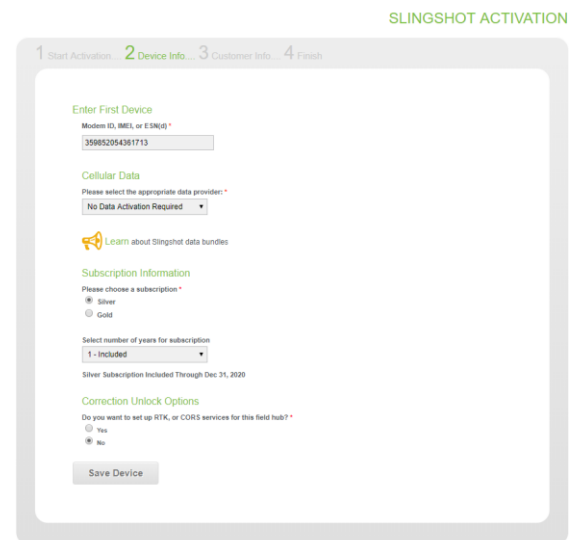


FIGURE 6 DEVICE INFORMATION

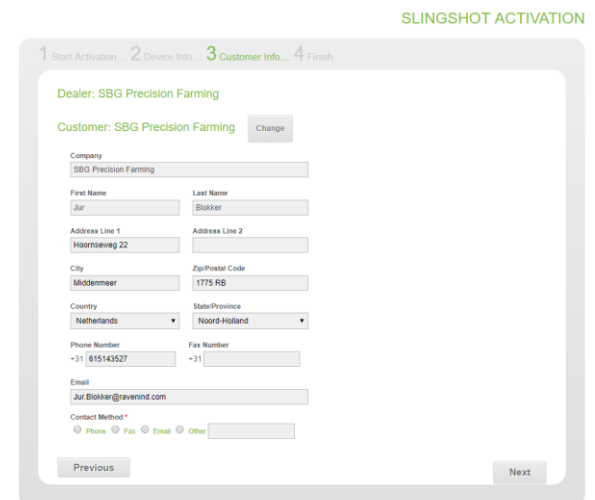


FIGURE 7 CUSTOMER INFORMATION