

Miller Nitro 5000 Series &  
New Holland Guardian F  
Series - Steering-Ready  
SC1™ HDU Guidance and  
Steering Installation

*016-5032-140 Rev. A*

*2/20*

*E34583*



## DISCLAIMER

While every effort has been made to ensure the accuracy of this document, Raven Industries assumes no responsibility for omissions and errors. Nor is any liability assumed for damages resulting from the use of information contained herein.

Raven Industries shall not be responsible or liable for incidental or consequential damages or a loss of anticipated benefits or profits, work stoppage or loss, or impairment of data arising out of the use, or inability to use, this system or any of its components. Raven Industries shall not be held responsible for any modifications or repairs made outside our facilities, nor damages resulting from inadequate maintenance of this system.

As with all wireless and satellite signals, several factors may affect the availability and accuracy of wireless and satellite navigation and correction services (e.g. GPS, GNSS, SBAS, etc.). Therefore, Raven Industries cannot guarantee the accuracy, integrity, continuity, or availability of these services and cannot guarantee the ability to use Raven systems, or products used as components of systems, which rely upon the reception of these signals or availability of these services. Raven Industries accepts no responsibility for the use of any of these signals or services for other than the stated purpose.

## Table of Contents

---

<b>Chapter 1</b>	<b>Important Safety Information.....</b>	<b>1</b>
Hydraulic .....		<b>2</b>
General .....		<b>2</b>
Instructions for Hose Routing .....		<b>2</b>
Electrical .....		<b>3</b>
General .....		<b>3</b>
Instructions for Wire Routing .....		<b>3</b>
<b>Chapter 2</b>	<b>Introduction.....</b>	<b>5</b>
Preparing for Installation .....		<b>5</b>
Recommendations .....		<b>5</b>
Point of Reference .....		<b>5</b>
Updates .....		<b>5</b>
Kit Contents .....		<b>6</b>
<b>Chapter 3</b>	<b>Cab Component Installation.....</b>	<b>7</b>
Install the Pressure Transducer in the Steering Valve .....		<b>7</b>
Install the GPS Receiver Cable .....		<b>7</b>
Install the SC1/Hydraulic Drive Unit (HDU) .....		<b>8</b>
Install the SC1 Cables .....		<b>10</b>
Install the SC1/HDU Harness .....		<b>10</b>
Install the Four-Wheel Steer Lockout Harness - Four-Wheel Steer Machines Only .....		<b>15</b>
System Diagram .....		<b>17</b>



---

# CHAPTER

# 1

# IMPORTANT SAFETY INFORMATION

---

## NOTICE

Read this manual and the operation and safety instructions included with your implement and/or controller carefully before installing the SC1™/HDU system.

- Follow all safety information presented within this manual.
- If you require assistance with any portion of the installation or service of your Raven equipment, contact your local Raven dealer for support.
- Follow all safety labels affixed to the SC1/HDU system components. Be sure to keep safety labels in good condition and replace any missing or damaged labels. To obtain replacements for missing or damaged safety labels, contact your local Raven dealer.

When operating the machine after installing SC1/HDU, observe the following safety measures:

- Be alert and aware of surroundings.
- Do not operate SC1/HDU or any agricultural equipment while under the influence of alcohol or an illegal substance.
- Remain in the operator's position or a safe working distance away from the booms at all times when SC1/HDU is engaged.
- Disable SC1/HDU when exiting from the operator's seat and machine.
- Do not drive the machine with SC1/HDU enabled on any public road.
- Determine and remain a safe working distance from other individuals. The operator is responsible for disabling SC1/HDU when the safe working distance has diminished.
- Ensure SC1/HDU is disabled prior to starting any maintenance work on SC1/HDU or the machine.



## WARNING

- When starting the machine for the first time after installing SC1/HDU, be sure that all persons stand clear in case a hose has not been properly tightened.
- The machine must remain stationary and switched off, with the booms unfolded and supported, during installation or maintenance.

## CAUTION

### HYDRAULIC

#### GENERAL

- Raven Industries recommends that appropriate protective equipment be worn at all times when working on the hydraulic system.
- Never attempt to open or work on a hydraulic system with the equipment running. Care should always be taken when opening a system that has been previously pressurized.
- When disconnecting the hydraulic hoses or purging is required, be aware that the hydraulic fluid may be extremely hot and under high pressure. Caution must be exercised.
- Any work performed on the hydraulic system must be done in accordance with the machine manufacturer's approved maintenance instructions.
- When installing SC1/HDU hydraulics or performing diagnostics, maintenance, or routine service, ensure that precautions are taken to prevent any foreign material or contaminants from being introduced into the machine's hydraulic system. Objects or materials that are able to bypass the machine's hydraulic filtration system will reduce performance and possibly damage the steering hydraulic valve.

#### INSTRUCTIONS FOR HOSE ROUTING

The word "hose" is used to mean all flexible fluid carrying components. Follow existing hoses as much as possible and use these guidelines:

Hoses should not contact or be attached to:

- Components with high vibration forces
- Components carrying hot fluids beyond component specifications

Avoid contact with any sharp edge or abrading surfaces such as, but not limited to:

- Sheared or flame cut edges
- Edges of machined surfaces
- Fastener threads or cap screw heads
- Ends of adjustable hose clamps

Routing should not allow hoses to:

- Hang below the unit
- Have the potential to become damaged due to exposure to the exterior environment. (i.e. tree limbs, debris, attachments)
- Be placed in areas of or in contact with machine components which develop temperatures higher than the temperature rating of hose components
- Hoses should be protected or shielded if it needs to route near hot temperatures beyond hose component specifications

Hoses should not have sharp bends

Allow sufficient clearance from machine component operational zones such as:

- Drive shafts, universal joints and hitches (i.e. 3-point hitch)

- Pulleys, gears, sprockets
- Deflection and backlash of belts and chains
- Adjustment zones of adjustable brackets
- Changes of position in SC1/HDU and suspension systems
- Moving linkages, cylinders, articulation joints, attachments
- Ground engaging components

For hose sections that move during machine operation:

- Allow sufficient length for free movement without interference to prevent: pulling, pinching, catching or rubbing, especially in articulation and pivot points
- Clamp hoses securely to force controlled movement to occur in the desired hose section
- Avoid sharp twisting or flexing of hoses in short distances

Protect hoses from:

- Foreign objects such as rocks that may fall or be thrown by the unit
- Buildup of dirt, mud, snow, ice, submersion in water and oil
- Tree limbs, brush and debris
- Damage where service personnel or operators might step or use as a grab bar
- Damage when passing through metal structures
- High pressure wash

---

## ELECTRICAL

### GENERAL

- Always verify that the power leads are connected to the correct polarity as marked. Reversing the power leads could cause severe damage to the equipment.
- Ensure that the power cable is the last cable to be connected.
- A minimum of 12 VDC is required for system operation with a maximum of 15 VDC.

### INSTRUCTIONS FOR WIRE ROUTING

The word “harness” is used to mean all electrical leads and cables, bundled and unbundled. When installing harness, secure it at least every 30 cm (12in) to the frame. Follow existing harness as much as possible and use these guidelines:

Harness should not contact or be attached to:

- Lines and hoses with high vibration forces or pressure spikes
- Lines and hoses carrying hot fluids beyond harness component specifications

Avoid contact with any sharp edge or abrading surfaces such as, but not limited to:

- Sheared or flame cut edges
- Edges of machined surfaces
- Fastener threads or cap screw heads
- Ends of adjustable hose clamps
- Wire exiting conduit without protection, either ends or side of conduit
- Hose and tube fittings

Routing should not allow harnesses to:

- Hang below the unit
- Have the potential to become damaged due to exposure to the exterior environment. (i.e. tree limbs, debris, attachments)
- Be placed in areas of or in contact with machine components which develop temperatures higher than the temperature rating of harness components
- Wiring should be protected or shielded if it needs to route near hot temperatures beyond harness component specifications

Harnessing should not have sharp bends

Allow sufficient clearance from machine component operational zones such as:

- Drive shafts, universal joints and hitches (i.e. 3-point hitch)
- Pulleys, gears, sprockets
- Deflection and backlash of belts and chains
- Adjustment zones of adjustable brackets
- Changes of position in SC1/HDU and suspension systems
- Moving linkages, cylinders, articulation joints, attachments
- Ground engaging components

For harness sections that move during machine operation:

- Allow sufficient length for free movement without interference to prevent: pulling, pinching, catching or rubbing, especially in articulation and pivot points
- Clamp harnesses securely to force controlled movement to occur in the desired harness section
- Avoid sharp twisting or flexing of harnesses in short distances
- Connectors and splices should not be located in harness sections that move

Protect harnesses from:

- Foreign objects such as rocks that may fall or be thrown by the unit
- Buildup of dirt, mud, snow, ice, submersion in water and oil
- Tree limbs, brush and debris
- Damage where service personnel or operators might step or use as a grab bar
- Damage when passing through metal structures

**IMPORTANT:**

- Avoid directly spraying electrical components and connections with high pressure water. High pressure water sprays can penetrate seals and cause electrical components to corrode or otherwise become damaged. When performing maintenance:
- Inspect all electrical components and connections for damage or corrosion. Repair or replace components, connections, or cable as necessary.
- Ensure connections are clean, dry, and not damaged. Repair or replace components, connections, or cable as necessary.
- Clean components or connections using low pressure water, pressurized air, or an aerosol electrical component cleaning agent.
- Remove visible surface water from components, connections, or seals using pressurized air or an aerosol electrical component cleaning agent. allow components to dry completely before reconnecting cables.



---

# CHAPTER

# INTRODUCTION

## 2

---

Congratulations on your purchase of the SC1/HDU system!

The following instructions are designed to assist with the proper installation of the SC1/HDU system. Refer to the SC1 Calibration & Operation Manual (P/N 016-4010-005) for assistance with calibrating the software and using the SC1/HDU system.

---

### PREPARING FOR INSTALLATION

Before installing the SC1/HDU system, park the machine where the ground is level, clean, and dry. Turn off the machine and leave it turned off for the duration of the installation process.

During the installation process, follow good safety practices. Be sure to carefully read the instructions in this manual as you complete the installation process.

### RECOMMENDATIONS

Raven Industries recommends the following best practices when installing or operating the SC1/HDU system for the first time, at the start of the season, or when moving the SC1/HDU system to another machine:

- Install the SC1 unit in the recommended location.
- Use part numbers to identify the parts.
- Do not remove the plastic wrap from a part until it is necessary for installation.
- Do not remove plastic caps from a part until it is necessary for installation.

### POINT OF REFERENCE

The instructions in this manual assume that you are standing behind the machine, looking toward the cab.

---

### UPDATES

Software and manual updates are available on the Raven Applied Technology website:

<http://www.ravenhelp.com>

At Raven Industries, we strive to make your experience with our products as rewarding as possible. One way to improve this experience is to provide us with feedback on this manual.

Your feedback will help shape the future of our product documentation and the overall service we provide. We appreciate the opportunity to see ourselves as our customers see us and are eager to gather ideas on how we have been helping or how we can do better.

To serve you best, please send an email with the following information to

[techwriting@ravenind.com](mailto:techwriting@ravenind.com)

-Miller Nitro 5000 Series & New Holland Guardian F Series - Steering-Ready SC1™ HDU Guidance and Steering Installation Manual

-016-5032-140 Rev. A

-Any comments or feedback (include chapter or page numbers if applicable).

-Let us know how long have you been using this or other Raven products.

We will not share your email or any information you provide with anyone else. Your feedback is valued and extremely important to us.

Thank you for your time.

## KIT CONTENTS

This section contains a list of the components that are included in the SC1/HDU, Miller/New Holland, kit. Before beginning the SC1 installation, compare the items in the kit with the components on this list. If you have questions about the kit, contact your local Raven dealer.

FIGURE 1. SC1 HD Installation Kit (P/N 117-5032-140 Rev. A)

QTY	PART #	DESCRIPTION
1	053-0159-087	BOX, SHIPPING
1	063-0173-887	ECU, HYDRAULIC DRIVER UNIT
1	063-0173-961	ASSEMBLY, MASTER SWITCH, RS1
1	063-0173-990	ECU, ISO, SC1, STANDARD
1	107-0172-193	BRACKET, COVER, ELECTRICAL BULKHEAD, MILLER MY 2013
1	107-0172-678	BRACKET, NODE MOUNTING, HDU/SC1, GENERIC
1	115-4010-073	CABLE, 4 WHEEL STEER, LOCKOUT
1	115-4010-105	CABLE, GPS, TRIMBLE 372 TO SC1
1	115-4010-173	CABLE, SC1/HDU MILLER/NH MY 13-16
1	422-0000-086	TRANSDUCER, PRESSURE 4-20 mA, 0-3000 PSI
1	053-0159-074	ENVELOPE, PLASTIC
1	016-0171-649	SHEET, WARRANTY/HELP (016-5032-140)
2	311-0050-107	BOLT, HEX HEAD, 1/4"-20 UNC-2A X 1.5" LG
3	311-0070-051	BOLT, FLANGE LOCK, M6-1.0 X 20MM, CLASS 5.8-8.8
4	312-1001-168	NUT, FLANGE LOCK, 1/4"-20 UNC, ZINC PLATED
4	313-2300-310	WASHER, 1/4"

---

## CHAPTER

## 3

## CAB COMPONENT INSTALLATION

---

### INSTALL THE PRESSURE TRANSDUCER IN THE STEERING VALVE

FIGURE 1. Pressure Transducer to be Removed



1. Locate and remove the existing pressure transducer from Port PS of the steering valve.
2. Install the provided 0-3000 PSI pressure transducer (P/N 422-0000-086) in Port PS of the steering valve.

---

### INSTALL THE GPS RECEIVER CABLE

1. Locate and disconnect the existing cable connected to the GPS receiver.

FIGURE 2. Existing GPS Receiver Cable



2. Connect the mating connector on the Steer-Ready Roof Cable (P/N 115-4010-105) to the existing roof bulkhead.
3. Connect the remaining rectangular connectors to the GPS receiver.

FIGURE 3. GPS Receiver Adapter Cable Installed

---



---

## INSTALL THE SC1/HYDRAULIC DRIVE UNIT (HDU)

NOTE: If SmarTrax is installed on the machine, remove the SmarTrax node and node harness.

FIGURE 4. Plastic Tray to be Removed

---



1. Remove the plastic tray located in the right-rear corner of the cab.
2. Locate the factory-installed node mounting bracket in the front of the compartment.
3. Install the HDU mounting bracket (P/N 107-0172-678) on the machine's existing plate using three M6 1.0 x 20 mm class 5.8-8.8 flanged bolts (P/N 311-0070-051).

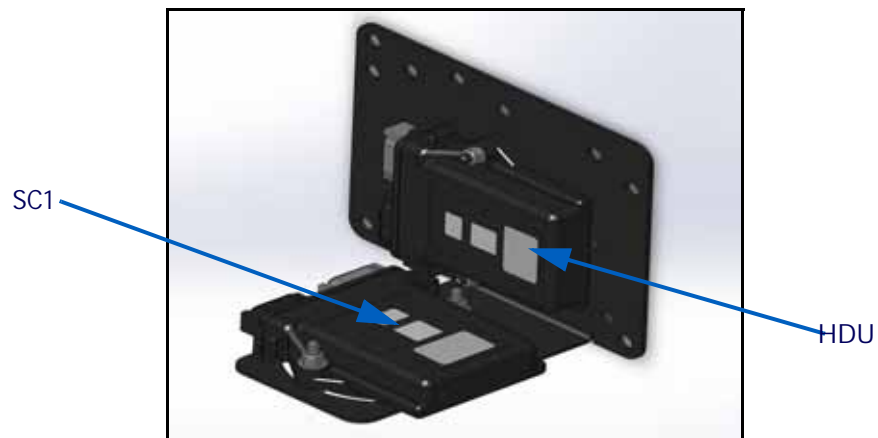
FIGURE 5. HDU Installed



4. Install the HDU (P/N 063-0173-887) on the HDU mounting bracket using two 1/4"-20 lock nuts.
5. Install the SC1 on the mounting bracket using two 1/4"-20 bolts, washers, and lock nuts.

NOTE: SC1 cannot be mounted in a vertical orientation.

FIGURE 6. HDU Installed



## INSTALL THE SC1 CABLES

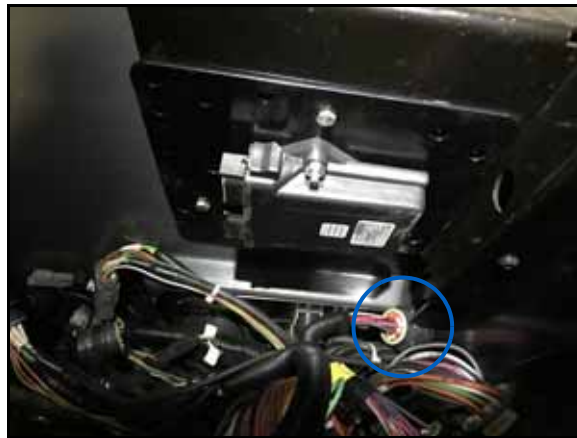
### INSTALL THE SC1/HDU HARNESS

FIGURE 7. GPS POWER/CAN Connector



1. Trace the cable from the machine's GPS bulkhead connector down the rear wall of the machine and into the instructional seat compartment.
2. Install the GPS POWER/CAN connector of the HDU harness cable (P/N 115-4010-173) to the machine's mating AR067 harness connector.

FIGURE 8. HDU Harness Bulkhead Connector Connected to Machine's Bulkhead



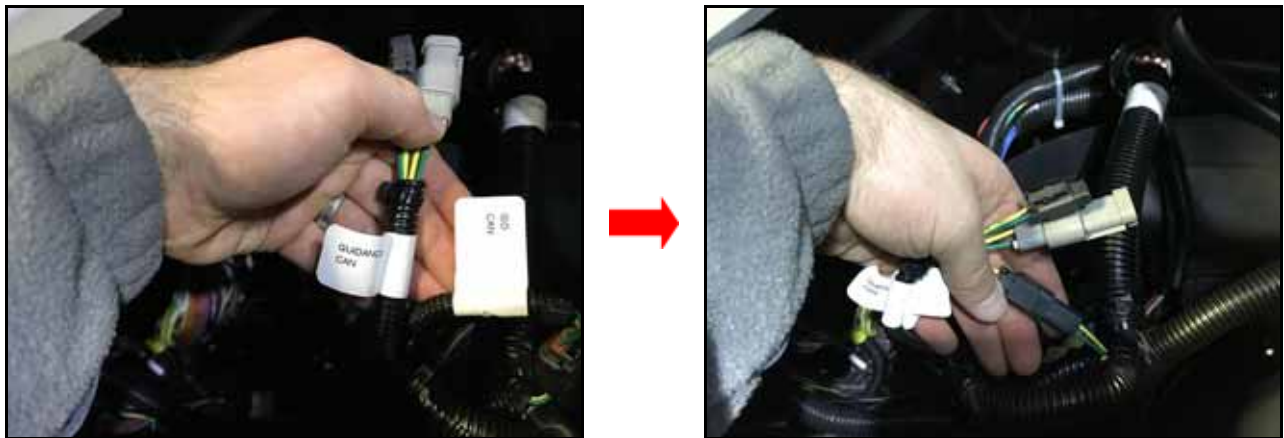
3. Connect the CAN/PWR connector of the HDU harness to the machine's bulkhead connector labeled AR064.

FIGURE 9. HDU Harness Connectors Connected to HDU



4. Install the two rectangular connectors of the HDU harness into the mating ports of the HDU (P/N 063-0173-887).
5. Install the two connectors on the SC1 harness into the mating ports of the SC1 (P/N 063-0173-990).

FIGURE 10. CAN Connection



6. Determine the machine's method of product control:
  - If Hawkeye is installed on the machine connect the ISO CAN 2-pin connector to the mating unmarked 2-pin connector on the HDU harness.
  - If Hawkeye is not installed on the machine, connect the GUIDANCE CAN 2-pin connector to the mating unmarked 2-pin connector on the HDU harness.

FIGURE 11. Side Console Cover to be Removed

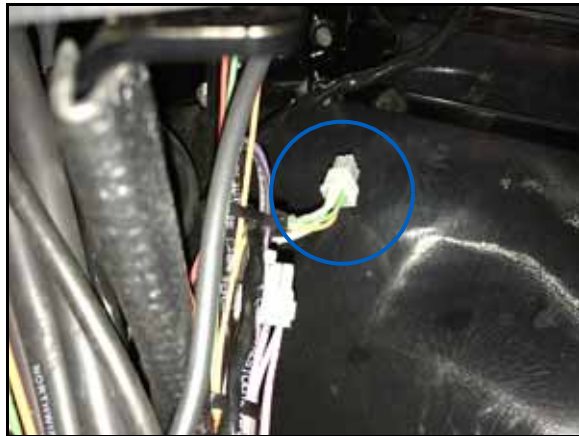
---



7. Remove the cover from the machine's side console.

FIGURE 12. Machine's AR193 Connectors

---



8. Connect the J1939 CAN connector of the HDU harness to the machine's mating AR193 connector.

**NOTE:** Only one of the J1939 CAN connectors of the HDU harness cable are used in the SC1 system installation. The remaining connector may be used for an auxiliary display if necessary.



FIGURE 13. Open Port of Side Console Cover



9. Identify an open port on the machine's side console cover.

FIGURE 14. STEERING LOCKOUT SWITCH Connector



10. Position the master switch (P/N 063-0173-961) over the open port in the side console cover, feeding the switch cable through the opening.
11. Connect the STEERING LOCKOUT SWITCH connector of the HDU harness cable (P/N 115-4010-173) to the master switch connector.

FIGURE 15. Steering Lockout Switch Installed



12. Replace the side console cover.
13. Press on the switch casing to ensure the switch is securely installed.

FIGURE 16. Shroud to be Removed



14. Remove the plastic shroud located on the outside of the machine, in the right-rear corner of the cab.

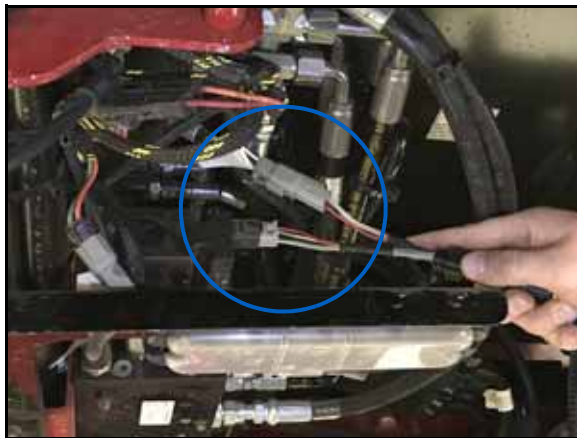
FIGURE 17. Cover Plate to be Removed



15. Remove the cover plate from the bulkhead as shown in the figure above.
16. Install the supplied bulkhead cover plate (P/N 107-0172-193) on the bulkhead cover panel using the nuts and bolts removed in step 9.
17. From inside the cab, install the round bulkhead connector of the HDU harness through the hole in the bulkhead cover panel.
18. Connect the machine's steering valve harness to the bulkhead connector of the HDU harness.
19. Tighten the bulkhead nut to secure the connection.

## INSTALL THE FOUR-WHEEL STEER LOCKOUT HARNESS - FOUR-WHEEL STEER MACHINES ONLY

FIGURE 18. Steering Lockout Cable Valve Connection



1. Disconnect the PVES connector of the valve harness (P/N 115-4001-140) from the steering valve.
2. Install the TO VALVE HARNESS connector of the steering lockout switch cable (P/N 115-4010-073) on the PVES connector of the valve harness.
3. Connect the TO VALVE connector to the open port of the steering valve.

FIGURE 19. Steering Lockout Cable Routing

---



4. Route the remaining connector to the left-rear tire of the machine.

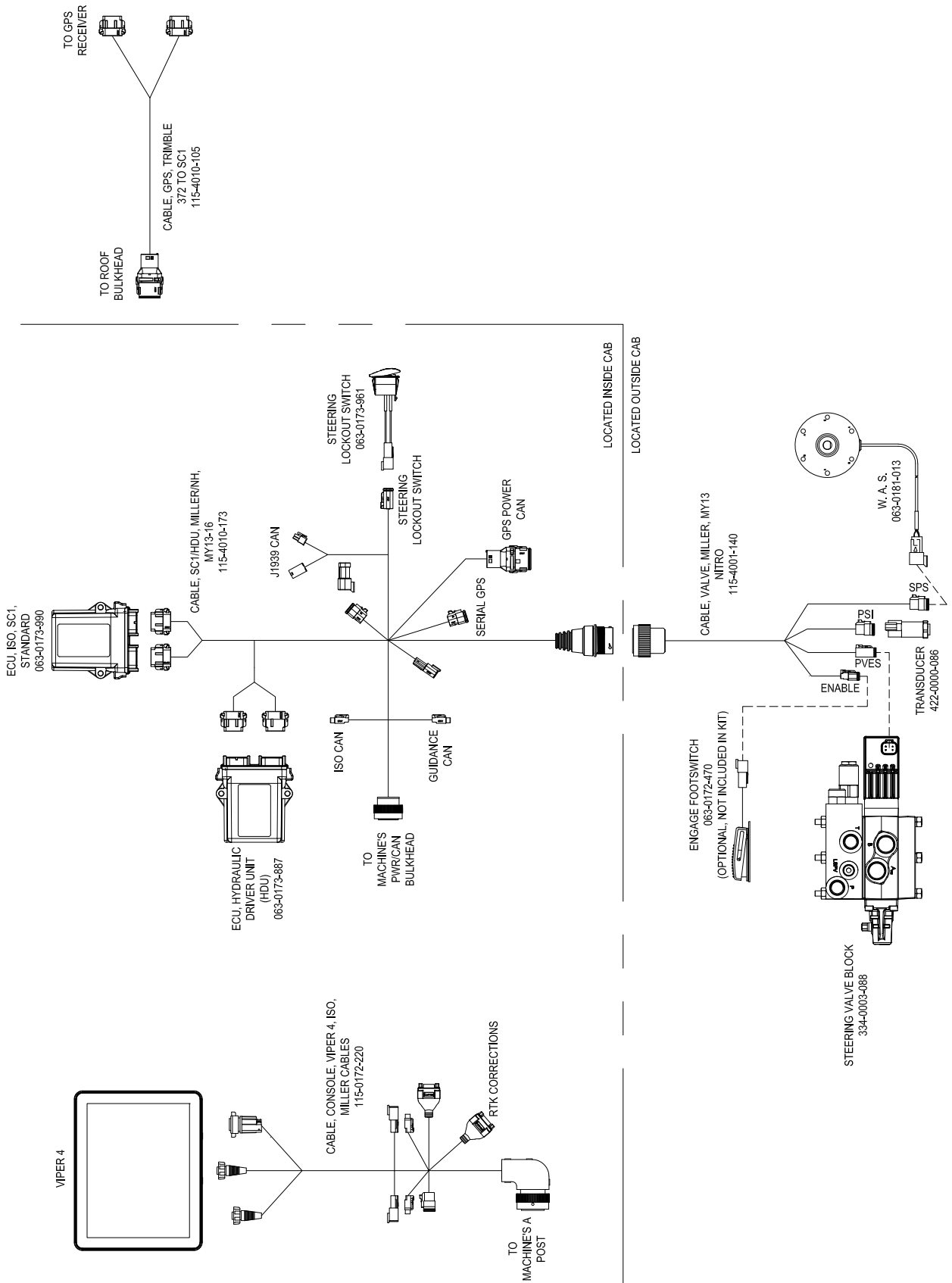
FIGURE 20. Steering Lockout Cable Connection

---



5. Connect the TO MACHINE'S FOUR WHEEL STEER (FW355) CONNECTOR to the machine's FW355 connection.

SYSTEM DIAGRAM





---

## C

- Cab Component Installation 7
  - Installing the Four-Wheel Steer Lockout Harness 15
  - Installing the Hydraulic Drive Unit (HDU) 8
  - Installing the Pressure Transducer in the Steering Valve 7
  - Installing the RS1 Cables 10
    - Install the HDU Harness Cable 10
    - Install the RS1 Harness 10

## E

- Electrical Safety 3

## H

- Hydraulic Safety 2

## I

- Important Safety Information
  - Electrical Safety 3
    - General 3
    - Instructions for Wire Routing 3
  - Hydraulic Safety 2
    - General 2
    - Instructions for Hose Routing 2
- Introduction 5
  - Kit Contents 6
  - Preparing for Installation 5
    - Point of Reference 5
    - Recommendations 5

## K

- Kit Contents 6





# LIMITED WARRANTY

## WHAT DOES THIS WARRANTY COVER?

This warranty covers all defects in workmanship or materials in your Raven Applied Technology Division product under normal use, maintenance, and service when used for intended purpose.

## HOW LONG IS THE COVERAGE PERIOD?

Raven Applied Technology products are covered by this warranty for 12 months from the date of retail sale. In no case will the Limited Warranty period exceed 24 months from the date the product was issued by Raven Industries Applied Technology Division. This warranty coverage applies only to the original owner and is non-transferable.

## HOW CAN I GET SERVICE?

Bring the defective part and proof of purchase to your Raven dealer. If the dealer approves the warranty claim, the dealer will process the claim and send it to Raven Industries for final approval. The freight cost to Raven Industries will be the customer's responsibility. The Return Materials Authorization (RMA) number must appear on the box and all documentation (including proof of purchase) must be included inside the box to be sent to Raven Industries.

## WHAT WILL RAVEN INDUSTRIES DO?

Upon confirmation of the warranty claim, Raven Industries will (at our discretion) repair or replace the defective product and pay for the standard return freight, regardless of the inbound shipping method. Expedited freight is available at the customer's expense.

## WHAT IS NOT COVERED BY THIS WARRANTY?

Raven Industries will not assume any expense or liability for repairs made outside our facilities without written consent. Raven Industries is not responsible for damage to any associated equipment or products and will not be liable for loss of profit, labor, or other damages. The obligation of this warranty is in lieu of all other warranties, expressed or implied, and no person or organization is authorized to assume any liability for Raven Industries.

**Damages caused by normal wear and tear, misuse, abuse, neglect, accident, or improper installation and maintenance are not covered by this warranty.**

# EXTENDED WARRANTY

## WHAT DOES THIS WARRANTY COVER?

This warranty covers all defects in workmanship or materials in your Raven Applied Technology Division product under normal use, maintenance, and service when used for intended purpose.

## DO I NEED TO REGISTER MY PRODUCT TO QUALIFY FOR THE EXTENDED WARRANTY?

Yes. Products/systems must be registered within 30 days of retail sale to receive coverage under the Extended Warranty. If the component does not have a serial tag, the kit it came in must be registered instead.

## WHERE CAN I REGISTER MY PRODUCT FOR THE EXTENDED WARRANTY?

To register, go online to [www.ravenhelp.com](http://www.ravenhelp.com) and select Product Registration.

## HOW LONG IS THE EXTENDED WARRANTY COVERAGE PERIOD?

Raven Applied Technology products that have been registered online are covered for an additional 12 months beyond the Limited Warranty for a total coverage period of 24 months from the date of retail sale. In no case will the Extended Warranty period exceed 36 months from the date the product was issued by Raven Industries Applied Technology division. This Extended Warranty coverage applies only to the original owner and is non-transferable.

## HOW CAN I GET SERVICE?

Bring the defective part and proof of purchase to your Raven dealer. If the dealer approves the warranty claim, the dealer will process the claim and send it to Raven Industries for final approval. The freight cost to Raven Industries will be the customer's responsibility. The Return Materials Authorization (RMA) number must appear on the box and all documentation (including proof of purchase) must be included inside the box to be sent to Raven Industries. In addition, the words "Extended Warranty" must appear on the box and all documentation if the failure is between 12 and 24 months from the retail sale.

## WHAT WILL RAVEN INDUSTRIES DO?

Upon confirmation of the product's registration for the Extended Warranty and the claim itself, Raven Industries will (at our discretion) repair or replace the defective product and pay for the standard return freight, regardless of the inbound shipping method. Expedited freight is available at the customer's expense.

## WHAT IS NOT COVERED BY THE EXTENDED WARRANTY?

Raven Industries will not assume any expense or liability for repairs made outside our facilities without written consent. Raven Industries is not responsible for damage to any associated equipment or products and will not be liable for loss of profit, labor, or other damages. Cables, hoses, software enhancements, and remanufactured items are not covered by this Extended Warranty. The obligation of this warranty is in lieu of all other warranties, expressed or implied, and no person or organization is authorized to assume any liability for Raven Industries.

**Damages caused by normal wear and tear, misuse, abuse, neglect, accident, or improper installation and maintenance are not covered by this warranty.**