

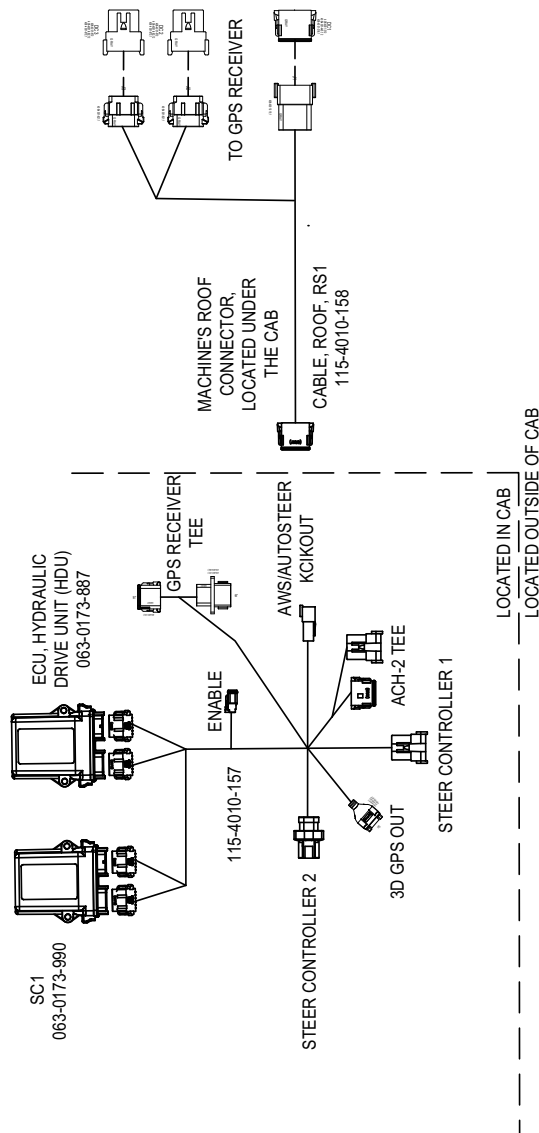
HAGIE STS/DTS MY 18 AND NEWER SC1/HDU INSTALLATION GUIDE

This quick guide provides the instructions for the installation of SC1 on an Hagie machine. For calibration and operation information, refer to the Operation Manual (P/N 016-4010-005) included with the kit.

INSTALLATION DIAGRAM

The drawing below provides a basic overview of the installation of the SC1. Refer to the next sections for detailed installation information.

FIGURE 1. Hagie SC1 MY 18+ System Diagram

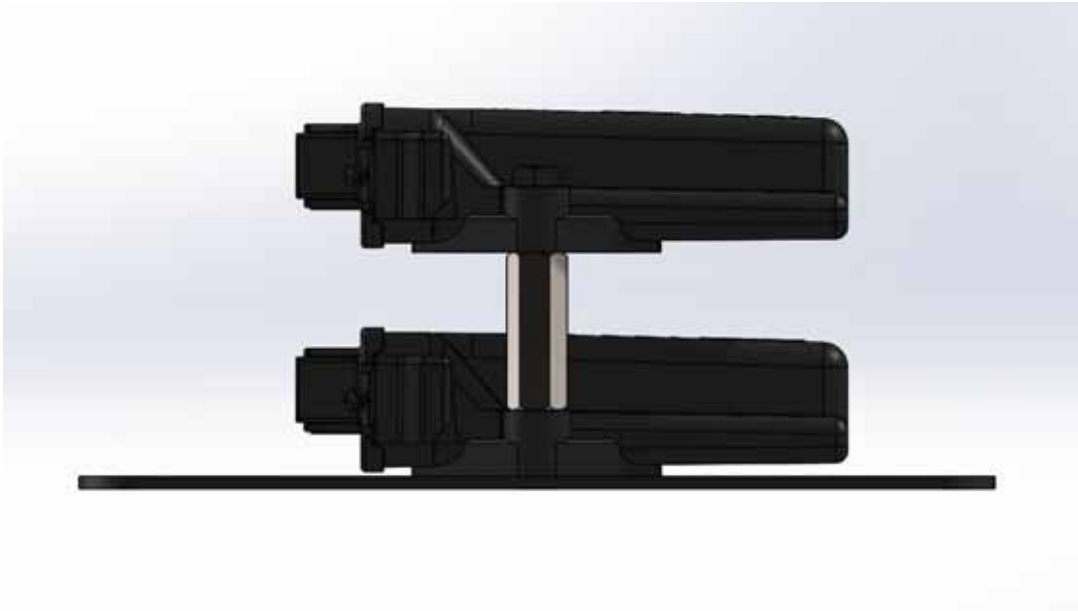


CAB COMPONENT INSTALLATION

SC1/HDU INSTALLATION

1. Install the HDU (P/N 063-0173-887) and the SC1 (P/N 063-0173-990) on the SC1/HDU mounting plate using the provided 1/4" - 20 flange nuts and 1/4" - 20 standoffs.

FIGURE 2. HDU Installed on Mounting Plate



2. Identify the SC1/HDU mounting location on the right side of the outside of the cab.

NOTE: It is necessary to move the front wheel out to access the panel location.

FIGURE 3. HDU Mounting Location



3. Use the provided hardware to mount the SC1/HDU.

NOTE: The SC1 must be mounted so that the ECU is facing a cardinal direction (North, South, East, or West).

FIGURE 4. Installed HDU



SYSTEM CABLE INSTALLATION

SC1/HDU CABLE

1. Identify the SC1/HDU Cable (P/N 115-4010-157).
2. Route and connect the gray and black 12-pin connectors on the HDU cable to the HDU.
3. Route and connect the gray and green 12-pin connectors on the SC1/HDU cable to the SC1.

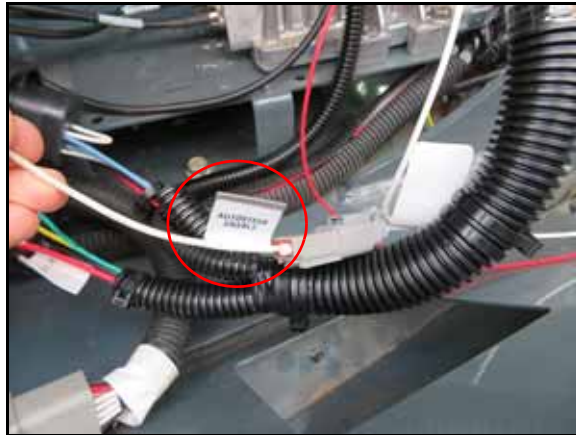
FIGURE 5. 12-Pin HDU Cables Connected



4. Connect the 2-pin ENABLE connector on the SC1/HDU cable into the machine's mating connector labeled AUTOSTEER ENABLE.



FIGURE 6. ENABLE Connected



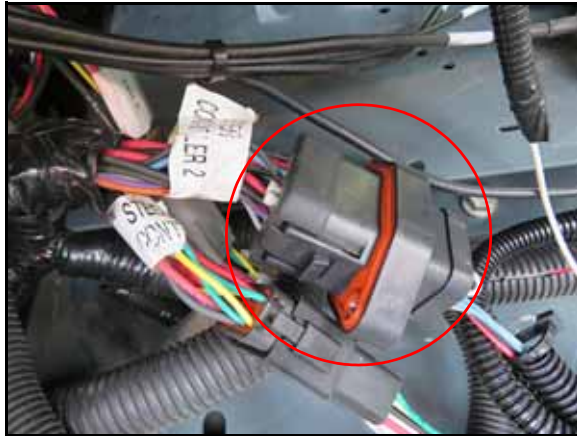
5. Connect the 4-pin connector to the machine's mating connector labeled AWS/AUTOSTEER KICKOUT.

FIGURE 7. AWS/AUTOSTEER KICKOUT Connection



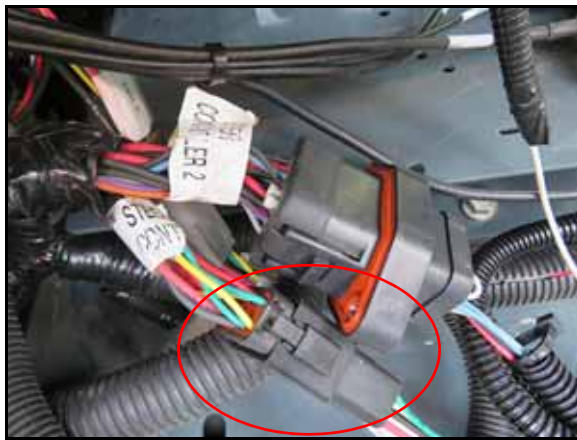
6. Connect the 18-pin connector on the SC1/HDU harness to the machine's mating connector labeled STEER CONTROLLER 2.

FIGURE 8. Ground Rail Installation



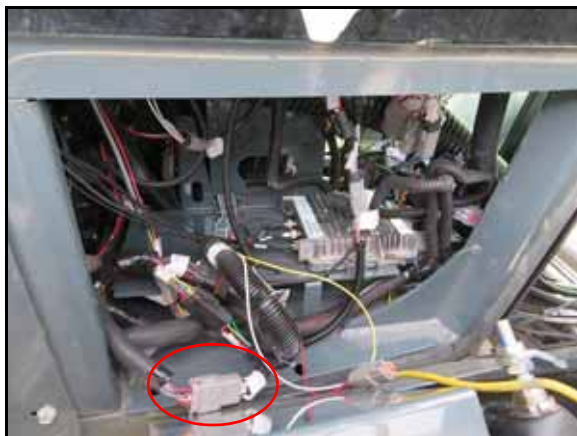
7. Connect the 12-pin connector on the SC1/HDU harness to the machine's mating connector labeled STEER CONTROLER 1.

FIGURE 9. STEER CONTROLER 1 Connection



8. Connect the 12-pin connector tee on the SC1/HDU harness to the machine's mating connectors labeled ACH-2.

FIGURE 10. ACH-2 Connection



-
9. Locate the GPS Receiver Tee on the SC1/HDU harness.

FIGURE 11. GPS Receiver Tee



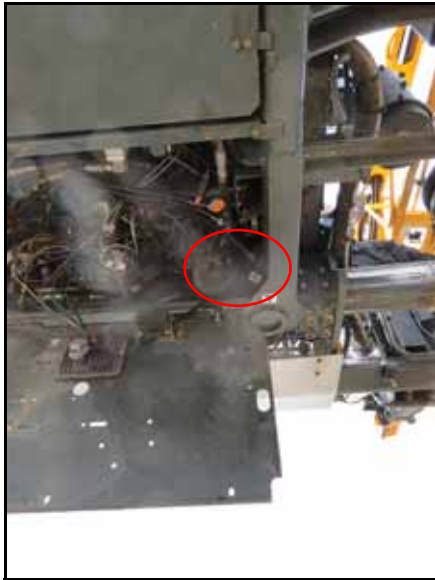
10. Disconnect the machine's 12-pin gray Deutsch connector labeled "RECEIVER."
11. Install the GPS Receiver Tee on the machine's mating connector.
12. Install the other end of the GPS Receiver Tee into the bulkhead cutout on the machine, replacing the machine's bulkhead connector.

GPS CABLE

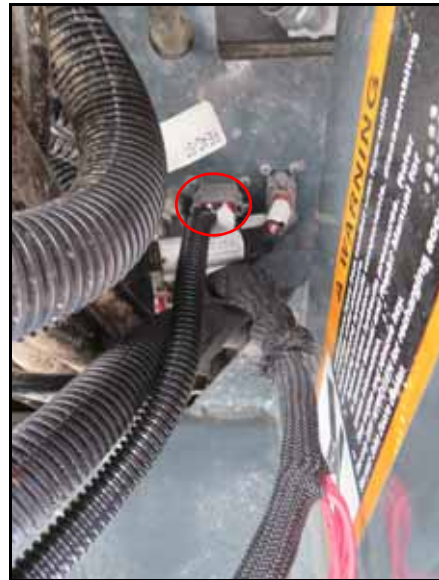
1. Identify the GPS cable (P/N 115-4010-158).
2. Connect the gray 12-pin Deutsch connector on the GPS cable labeled "Cab Bulkhead" into the mating connector on the SC1/HDU harness, labeled GPS Receiver TEE.

FIGURE 12. Bulkhead Connector to HDU Cable

Front Bottom Panel on the Right Side of the Machine



Machine's Bulkhead Connector



3. Route the 12-pin connectors up to the GPS Receiver. Secure the cable with zip ties and the provided cable clamps.
4. Plug the appropriate GPS connection into the GPS Receiver.

NOTE: The GPS cable is only compatible with a StarFire and a 372 Receiver.

The ISO terminator located under the cab will need to be removed with the SC1 system.

ROUTINE OPERATION

Refer to the Raven SC1 Guidance and Steering Calibration & Operation Manual (P/N 016-4010-005) for instructions on Calibrating the SC1 system, adjusting system settings, and system operation. Identify the buttons and switches in the below as they are required for routine operation.

MASTER SWITCH

The master switch is located on the Hagie display. For AutoSteer to operate, set the Master Switch to Field Mode. When driving on the road, set the Master Switch to Road Mode.

RESUME SWITCH

The Resume switch is the button labeled END ROW on the hydro handle. It may be necessary to program the END ROW button on the Hagie display to have AutoSteer Engagement.



