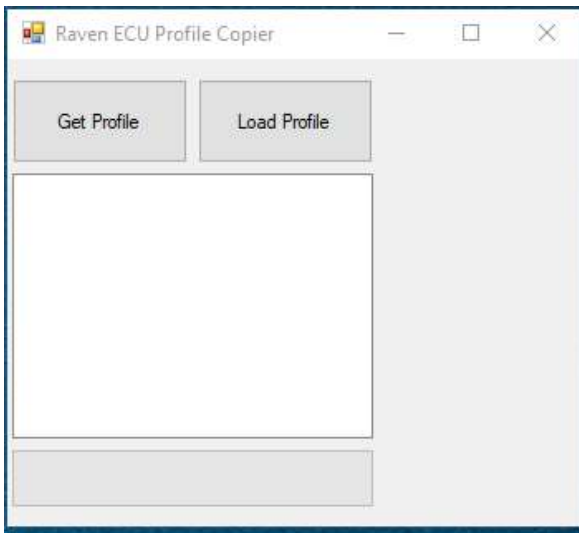


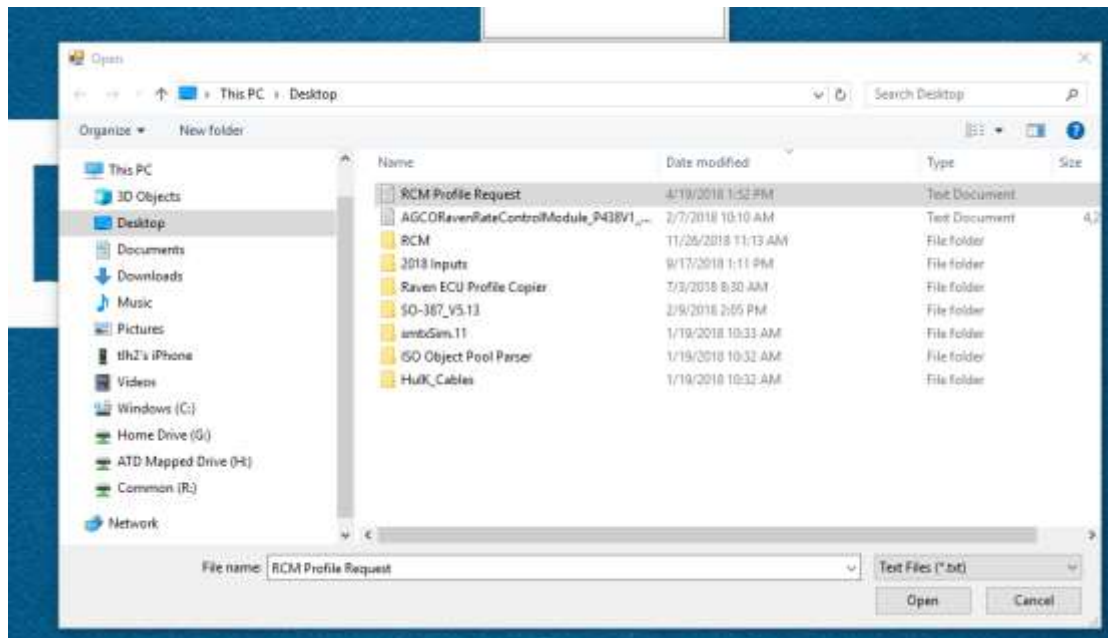
Raven ECU Profile Copier Instructions

Copying a profile

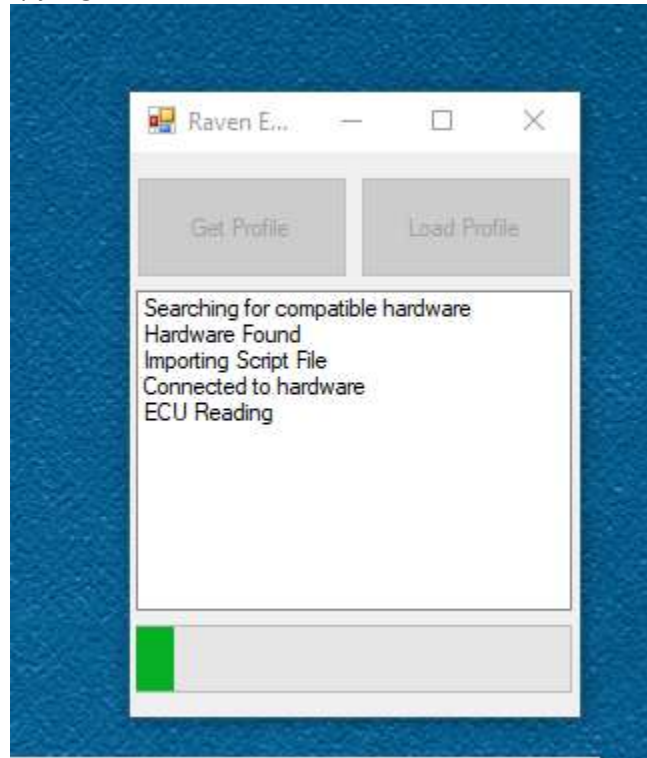
1. Connect Raven Service Tool (p/n 117-0171-464) to computer's USB port and ISOBUS (desktop setup or machine). Additionally connect the ECU with desired profile or set of profiles to the same ISOBUS, ensuring that only one Raven ECU is connected to the system.
2. Confirm that the Raven Service Tool software utility is NOT open, and then open the Raven ECU Profile Copier. Select 'Get Profile'.



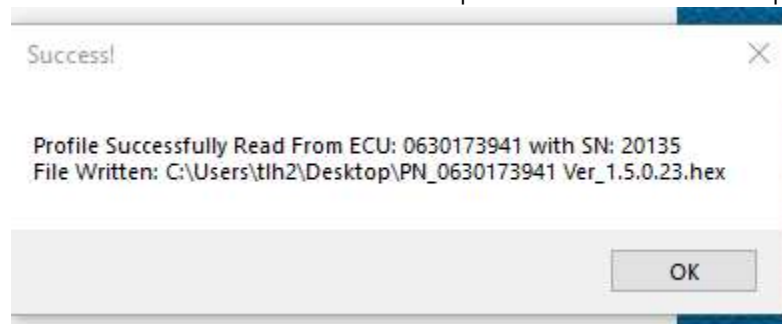
3. Open the 'RCM Profile Request' script file. This file will need to be located on the computer in use, typically in the Raven ECU Profile Copier folder.



4. The profile will start copying as shown.



5. Once completed a window that shows where the profile was saved will appear.

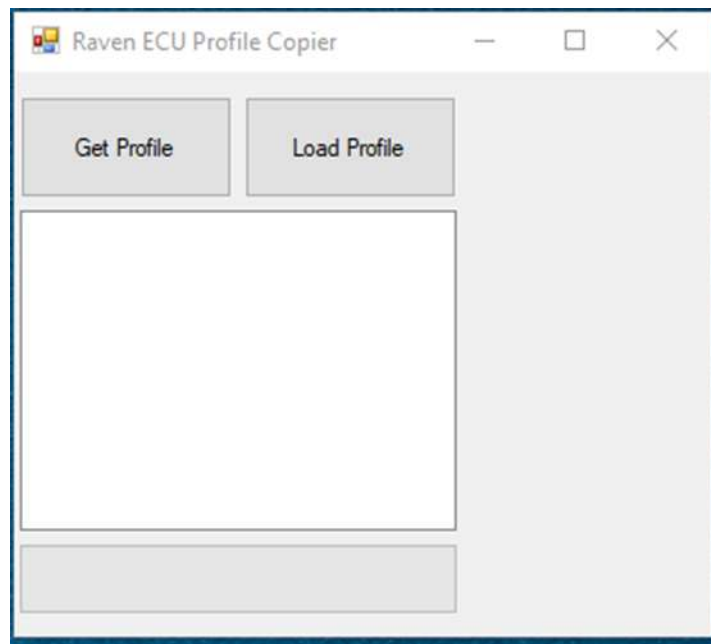


The profile copying is complete and saved as a '.hex' file. Note that the profile saved can only be loaded on ECUs matching the same exact Raven part number that it was extracted from. If it is necessary to load the profile on other ECU variants, please contact Raven support for assistance. Software activations are not transferred as part of the copy process, and profiles created with activated features are not available on lower level ECUs.

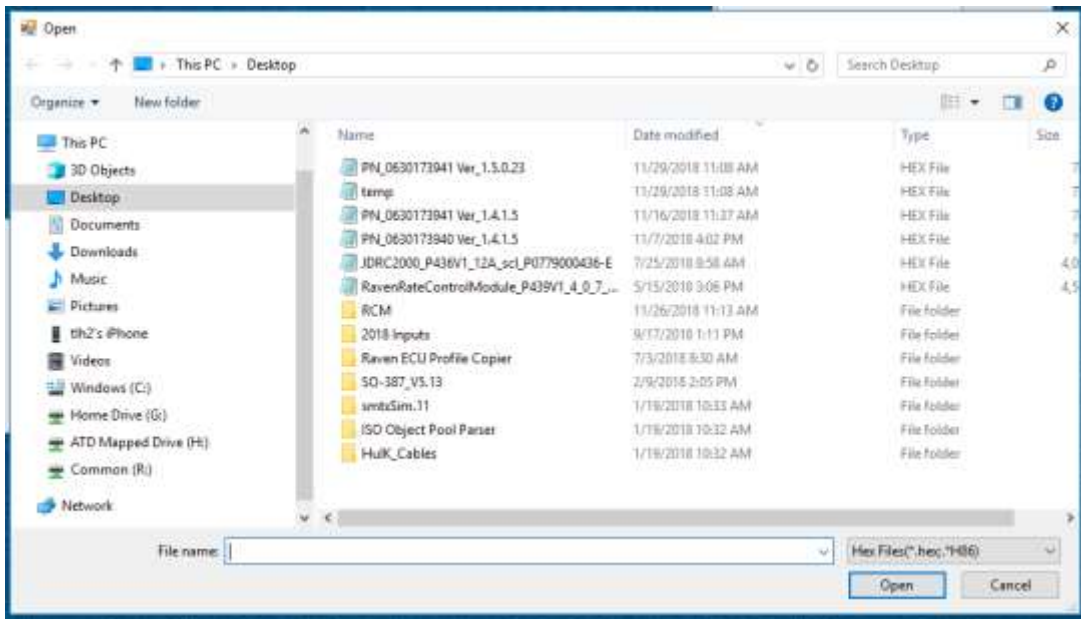
Loading an ECU Profile to a subsequent ECU

The resultant hex file can be loaded on subsequent ECUs of the same part number in one of three ways:

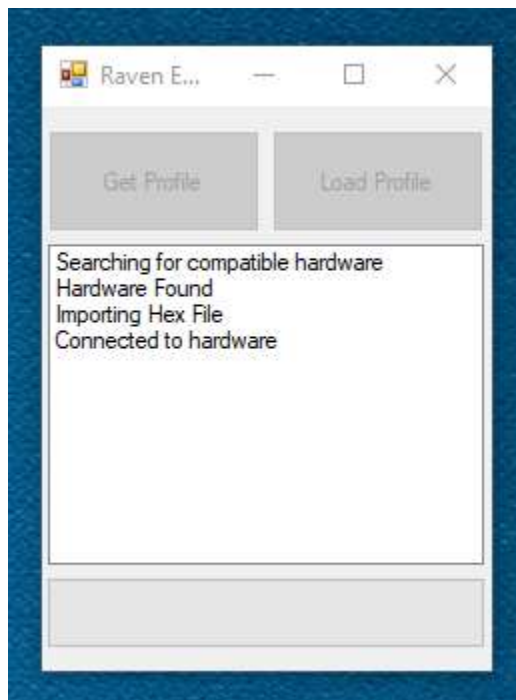
1. Utilizing a Raven Field Computer and utilizing the standard ECU update process (reference field computer manual for instructions) with target ECU(s) on same ISOBUS.
2. Raven Service Tool Application and utilizing the standard ECU update process (reference Raven Service Tool manual for instructions) with target ECU(s) on same ISOBUS.
3. Raven ECU Profile Copier using process shown below with target ECU(s) on same ISOBUS.
 - a. Connect Raven Service Tool (p/n 117-0171-464) to computer's USB port and ISOBUS (desktop setup or machine). Additionally connect the target ECU(s) to the same ISOBUS.
 - b. Confirm that the Raven Service Tool software utility is NOT open, and then open the Raven ECU Profile Copier. Select 'Load Profile'.



c. Select the profile '.hex' file that is to be loaded.



d. The profile will then start loading. The Raven ECU Profile Copier will display a progress bar showing progress.



5. When progress bar is done the profile copy is completed.