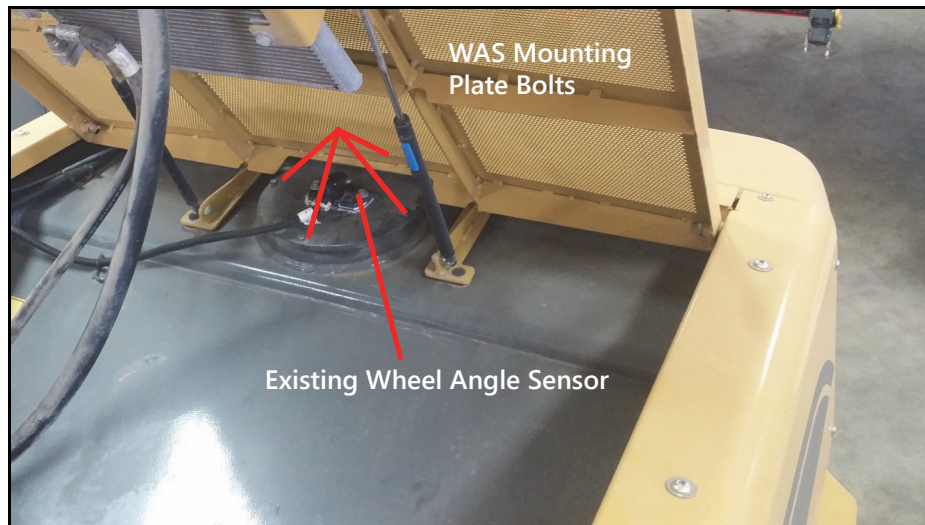


## SC1 TERRAGATOR B SERIES INSTALLATION ADDENDUM

**FIGURE 1. Existing Wheel Angle Sensor**



1. Remove the four bolts securing the WAS mounting plate to the machine.
2. Remove the OEM WAS shaft and replace it with the provided WAS shaft (P/N 019-519-622). Do not tighten the jam nut at this time.

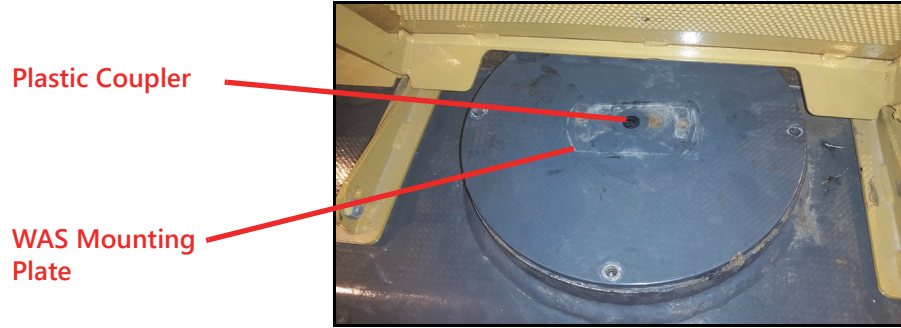
**NOTE:** One of the flat faces on the square stub must face directly towards the cab.

**FIGURE 2. Installed WAS Shaft**



3. Install the plastic coupler (P/N 307-0159-419) onto the square stub with the flat of the D-profile facing rearward, towards the cab.
4. Temporarily reinstall the WAS mounting plate. The top of the plastic coupler should be flush, or slightly above, the round plate.

**FIGURE 3. Plastic Coupler on WAS Mounting Plate**



5. If necessary, adjust the WAS shaft to obtain the correct plastic coupler height. After the plastic coupler is the right height, tighten the jam nut.

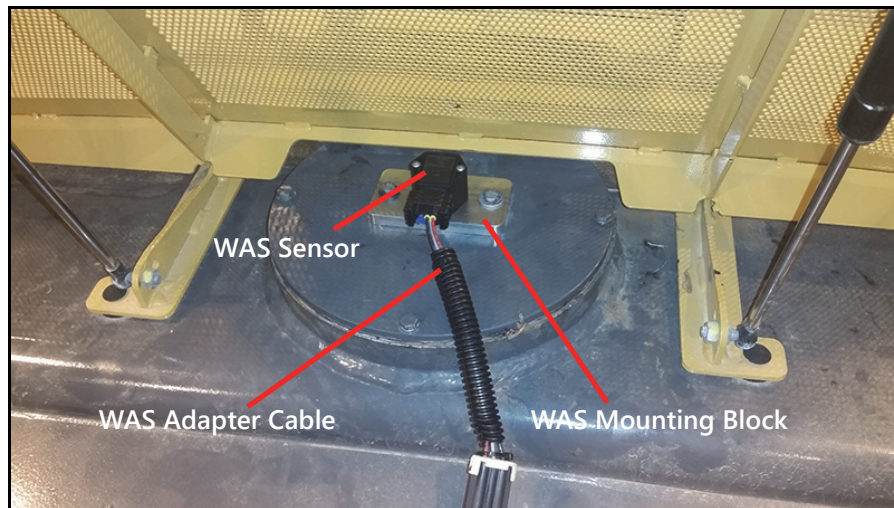
**NOTE:** Ensure the flat on the D-shaft is still facing the cab, after height adjustment.

6. Reinstall and tighten the four bolts securing the large round plate.
7. Identify the 063-0174-085 wheel angle sensor (WAS) assembly.
8. Install the provided o-ring on the bottom of the WAS assembly, utilizing the provided di-electric grease.
9. Install the WAS assembly to the mounting block on the machine. Verify that the flat on the D shaft of the sensor is pointed toward the electrical connector and toward the rear of the machine.

**FIGURE 4. WAS with O-Ring and Di-Electric Grease Applied**



**FIGURE 5. Completed WAS Installation**



10. Tighten all mounting hardware.
11. Connect the WAS Adapter Cable (P/N 115-4010-054) between the machine's WAS harness and the sensor.

**NOTE:** When performing the WAS calibration, verify that the voltage reported by the sensor changes value all the way to both the left and right locks.

**IMPORTANT:** The WAS must be calibrated after installation.