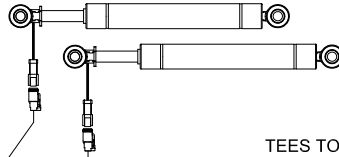
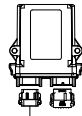
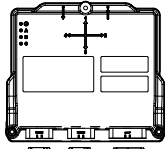


AUTOBOOM XRT, PATRIOT 90'/100' CABLING

ECU, ISOBUS, RAVEN
EXPANSION MODULE
063-0173-965

ECU, RAVEN, AUTOBOOM
XRT, ABM
063-0173-973

VARIABLE MR DAMPER,
6" STROKE
314-1000-001



TEES TO CAN

TEES TO CAN

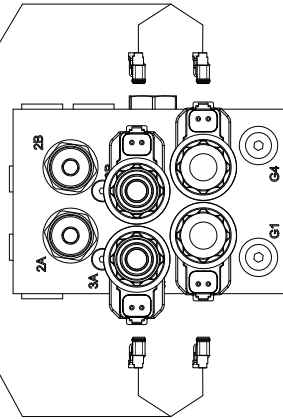
TEES AT XB-40

TEES AT XB-40

CONNECT TO CASE AUX POWER
DUST CAP

CABLE, SUPERSEAL
POSITION SENSOR
TO 4 PIN
115-4010-069

CENTER RACK
POSITION SENSOR



VALVE, AUTOBOOM
CLOSED CENTER
334-0235-001

CABLE, XRT AB, CIH PATRIOT
115-0235-100

CABLE, SECONDARY
BOOM, XRT
90': 115-0235-026
100': 115-0235-026

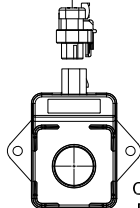
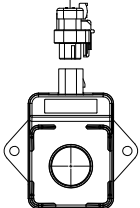
CABLE, PRIMARY
BOOM, XRT
90': 115-0235-022
100': 115-0235-022

CABLE, PRIMARY
BOOM, XRT
90': 115-0235-022
100': 115-0235-022

CABLE, SECONDARY
BOOM, XRT
90': 115-0235-026
100': 115-0235-026

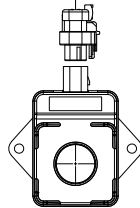
TERMINATOR
408-4002-169

TERMINATOR
408-4002-169



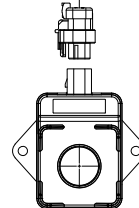
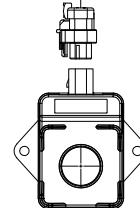
CABLE, SUPERSEAL
POSITION SENSOR
TO 4 PIN
115-4010-069

LEFT CYLINDER
POSITION



CABLE, SUPERSEAL
POSITION SENSOR
TO 4 PIN
115-4010-069

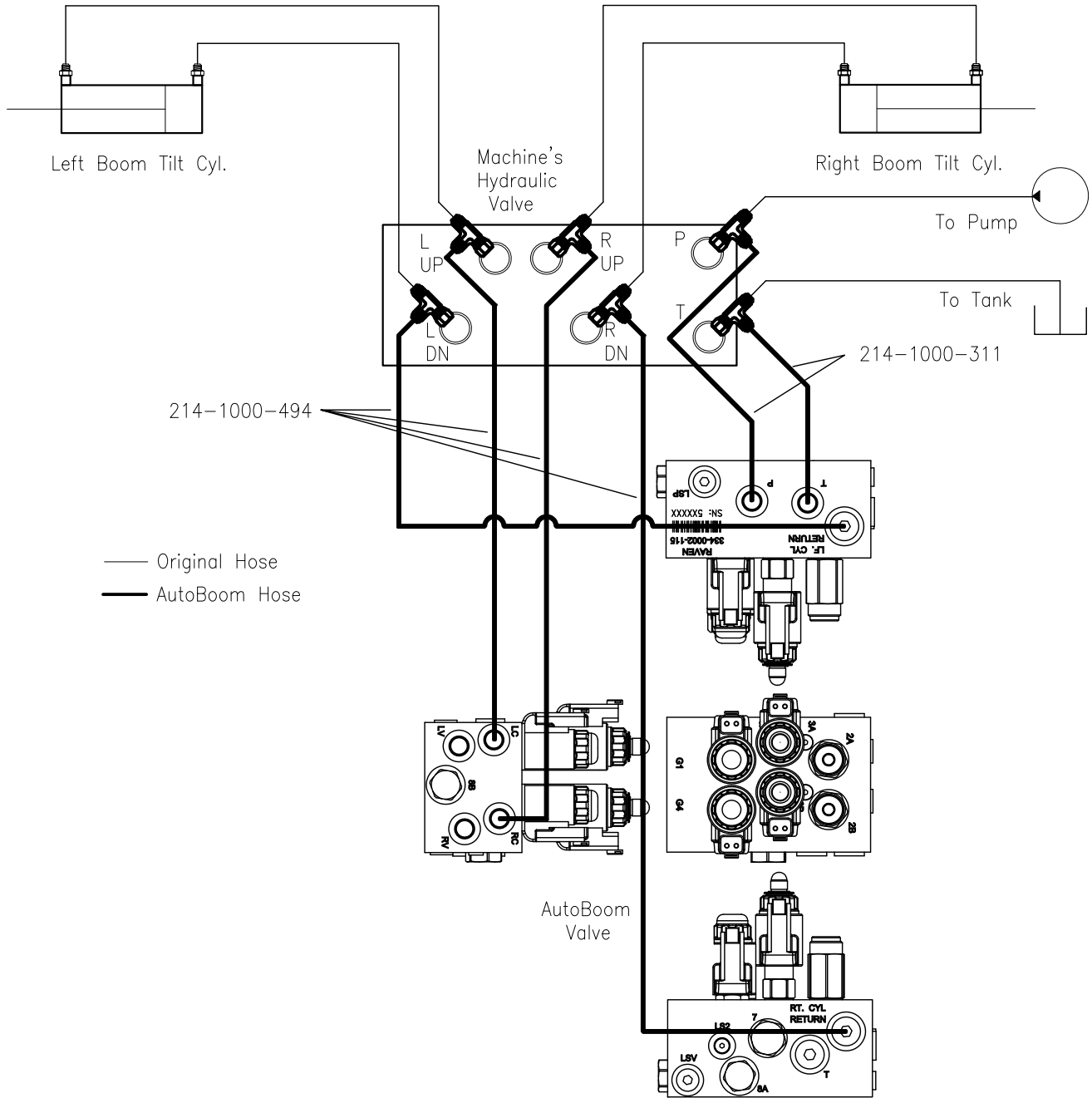
RIGHT CYLINDER
POSITION



RADAR HEIGHT
SENSOR
063-0173-962

RELEASED DATE	ECO #	REV.	DRAWING NO.
9/7/18	31997	A	054-0236-005
9/25/18	32063	B	054-0236-005

AUTOBOOM XRT, PATRIOT 90'/100' HYDRAULIC DIAGRAM



RELEASED DATE	ECO #	REV.	DRAWING NO.
9/7/18	31997	A	054-0236-005
9/25/18	32063	B	054-0236-005