



Upgrade to SBGuidance 4.x.x

This manual describes how to upgrade to SBGuidance 4. It is important to follow the steps in the described order. The upgrade involves installing SBGuidance 4.x.x, SBGuidance Update Manager 4.x.x, SBGuidance Loader 4.x.x, SBGuidance Field Manager 4.x.x, SBGuidance Machine Manager 4.x.x and SBGuidance Base Manager 4.x.x.

Step 1: Download software

1. Download SBGuidance 4.x.x, Update Manager 4.x.x, Loader 4.x.x, Field Manager 4.x.x, Machine Manager 4.x.x and Base Manager.
2. Put all executable files on USB drive in the folder 'software' (Figure 1). Create this folder if it doesn't exist.



SBGuidance Live Update 1.8 can alternatively be used to download SBGuidance 4 including all corresponding applications.

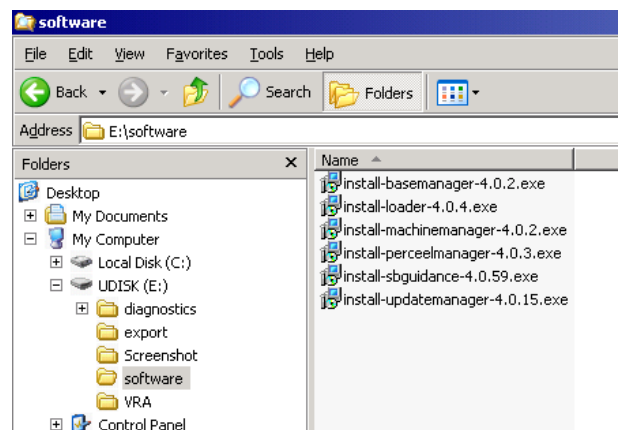


Figure 1 Executable files on USB drive

Step 2: Install SBGuidance 4.x.x

1. Put your USB drive into the USB port of the field computer.
2. Install SBGuidance 4.x.x on the field computer by running the executable (*install-sbguidance-4.x.x.exe*) from USB drive. Go through all steps in the wizard.
3. Close all Windows Explorer windows.
4. Close SBGuidance Loader by pressing ALT + F4



5. Open SBGuidance Configurator via START > Programs > SBGuidance > SBGuidance Configurator. The Machine Selector is shown. Select one of the available machine profiles to proceed.
6. Go to Tools > Upgrade data structure (Figure 2). Choose *UPGRADE* to start upgrading to the SBGuidance 4 folder structure. As soon as the upgrading procedure is finished, press *DONE* to close the wizard.
7. Close SBGuidance Configurator.
8. Do not shut down the field computer before the remaining steps are completed.

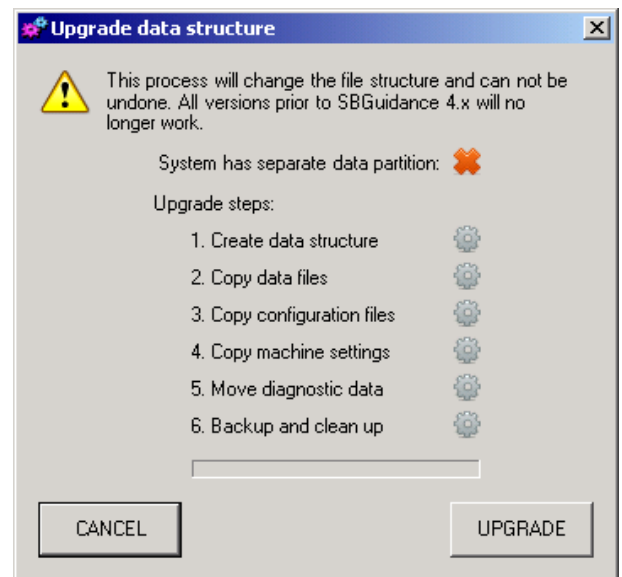


Figure 2 Wizard Upgrade data structure

Step 3: SBGuidance Update Manager

1. Install Update Manager 4.x.x on the field computer by running the executable (*install-updatemanager-4.x.x.exe*) from USB drive. Go through all steps in the wizard.
2. Start Update Manager via START > Programs > SBGuidance Update Manager (Figure 3).
3. Install all available updates by pressing on each red bar and choose *Upgrade*.
4. Close SBGuidance Update Manager.

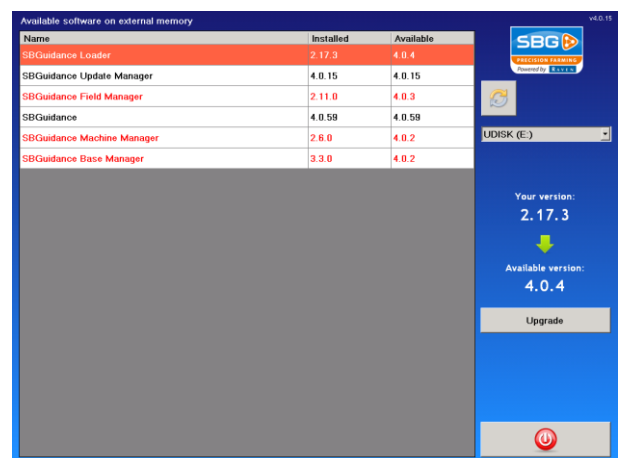


Figure 3 Update Manager

SBGuidance and all software applications are now updated to version 4 and ready to be used!