



# RAVEN 600S ANTENNA

016-8000-013EN REV. A



Update Manual  
(English) (Translated)

**RAVEN**



## PREFACE

This installation manual is intended for persons responsible for installing File Transfer on a SBGuidance system. The manual contains important instructions that should be complied with when commissioning, operating and servicing the SBGuidance system.

This manual has been compiled with the utmost care. Raven Europe assumes no responsibility for any errors or omissions in this document.

Any comments or questions can be sent to [service-eu@ravenind.com](mailto:service-eu@ravenind.com).

**Raven Europe or any of its suppliers will accept no liability for physical or material damage caused whilst using the SBGuidance system.**

The installed SBG system produces less than 70dB (A) noise.

This user guide uses a number of concepts for extra attention to a few things:



**Hint:**

*Provides recommendations on how certain activities can be performed much easier.*



**Please note!**

*Indicates certain problems that the user should take note of.*



**Caution!**

*Indicates that the machine can be damaged.*



**Warning!**

*Indicates a risk of injury.*

## DISCLAIMER

### WARNING!

- The safety instructions contained in the manuals of the tractor or implements must be complied with at all times.
- Always switch off the tractor before installing or repairing hydraulic and electrical components of the SBGuidance system.
- It is strictly prohibited to use the SBGuidance system on public roads.
- It is strictly prohibited to leave a driving vehicle unattended when the SBGuidance system is switched on. The driver is always responsible for the direction and course of the vehicle.
- To prevent injury or fire, replace defective fuses only with fuses of the same type and amperage.
- The SBGuidance the operating system is not able to detect and avoid obstacles. If there is an obstacle in your path, you will always need to take action for it to be avoided.
- Only allow authorized/qualified persons to operate the system. Authorized/qualified persons are defined as: persons who have read and understood the manual, have been given instructions by a product specialist, and who are both physically and mentally fit and able to operate the system.
- The system contains moving parts! Make sure the immediate environment is clear of people before operating the system.
- In case of system failure or breakdown switch of the tractor and disconnect the electrical power source to avoid further damage. Contact your dealer for further instructions on how to repair your system.
- Always wear personal protective equipment when operating/adjusting/repairing the system outside of the tractor cab.
- In order to prevent power surges from occurring, always start the machine first, before initiating the SBGuidance control system.

### PAY ATTENTION!

- Only touch the touch-screen with your finger or by using a special touch-screen stylus/pen. Operating the touch-screen with sharp objects may cause permanent damage to the screen.
- Always consult your supplier as to which products are best suited first before cleaning the touch-screen with chemicals or alcohol.
- If the terminal is not used for a long period, better remove the terminal from the tractor and store in a heated environment. This will extend the life span of the electronic components.
- To prevent theft, it is better to not let the terminal and GPS-antenna unattended in the tractor on the field.

## CONTENT

PREFACE.....	3
DISCLAIMER.....	4
CONTENT.....	5
1 UPDATE 600S.....	7
1.1 DOWNLOADING NEW FIRMWARE .....	7
1.2 CONNECTING THE ANTENNA.....	7
1.3 INSTALL THE FIRMWARE.....	7



## 1 UPDATE 600S

For updating a Raven 600S antenna, a number of steps are required. You also need a laptop or desktop.

### 1.1 DOWNLOADING NEW FIRMWARE

Go to [www.raveneurope.com](http://www.raveneurope.com) and download the latest firmware for this antenna. This can be found at Dealer > Software. Unzip the file on your computer. The extracted file contains a number of files of which two are important, these can be found in the folder *Firmware*: (Figure 1)

- WinLoad.exe (the program for installing the firmware)
- A .shex file (this is the firmware for example: OEM60730RN0000.shex)

### 1.2 CONNECTING THE ANTENNA

To update the GPS receiver, the Raven 600S antenna must be connected to a computer. To do this, connect Port A to the laptop / desktop. The antenna must also be supplied with power. It is not necessary that the antenna has a clear view for GPS reception.

### 1.3 INSTALL THE FIRMWARE

Start the program WinLoad.exe.

Click on the folder at the top left side of the screen and select the .shex file. Press Open. The file appears in the program (see red box in Figure 2).

Now click on Settings > COM Settings. Set the COM port which is used at this computer and select the baudrates as shown in Figure 3. Click OK.

Click on Write Flash. When Searching for card appears on the screen, the antenna must be restarted. Do this by disconnecting the power cable from the antenna. Then place it back in the antenna and continue to the next step.

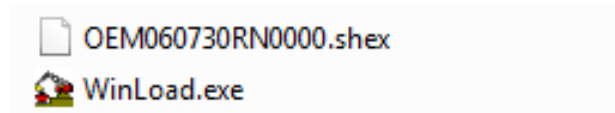


FIGURE 1 TWO NESESARY FILES

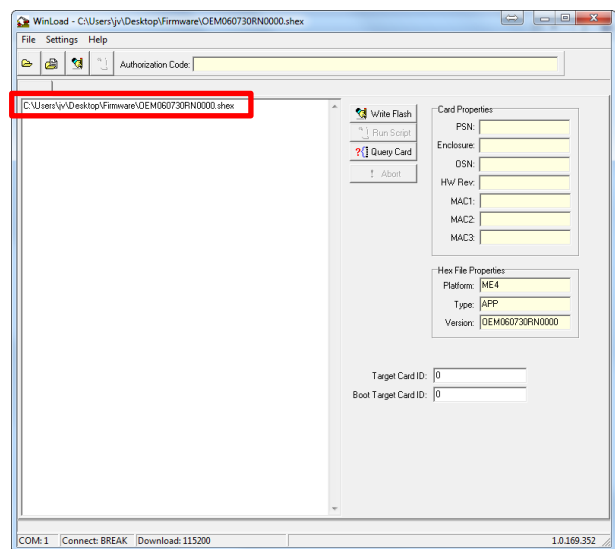


FIGURE 2 WINLOAD FIRMWARE LOADED

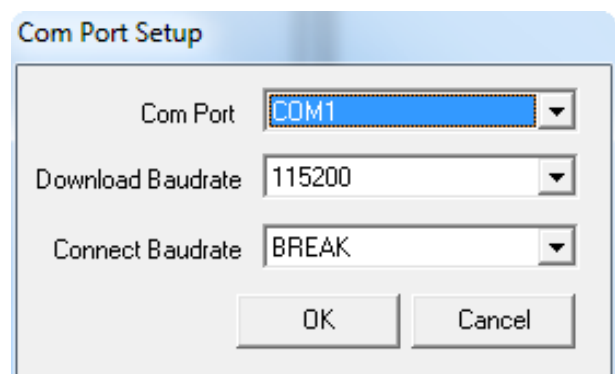


FIGURE 3 WINLOAD COM PORT SETTINGS

If the Authorization Code window appears, call Raven Europe and ask for the Service department. When you give them the code under the barcode they can request a Authorization Code for you. (Figure 4) Enter the Authorization Code and click OK.

If the Authorization Code window not appears, you don't have to do anything.



FIGURE 4 REQUIRED CODE FOR THE AUTH-CODE

Then the installation will continue and the receiver resets itself. When *Done* appears in the screen, the process is complete. (Figure 5)

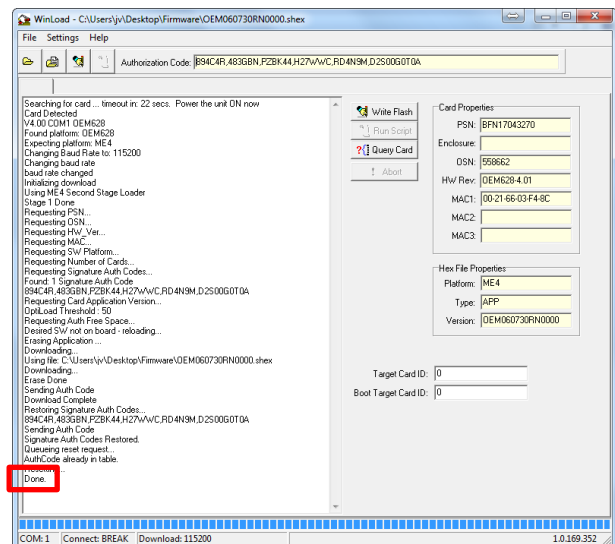


FIGURE 5 WINLOAD PROCESS COMPLETED

Close WinLoad and disconnect the antenna from the laptop. Now connect Port A to COM3 of the terminal harness again and start the terminal. Go to the Configurator with SHIFT + SBGuidance. Press Interfaces > GPS > Novatel Receivers. Select behind Receiver Type Smart-6L (Raven 600S) and behind Port COM3. Go to the Config tab and press Version Info. Scroll something up and see if the newly installed version is actually installed. (Figure 6)

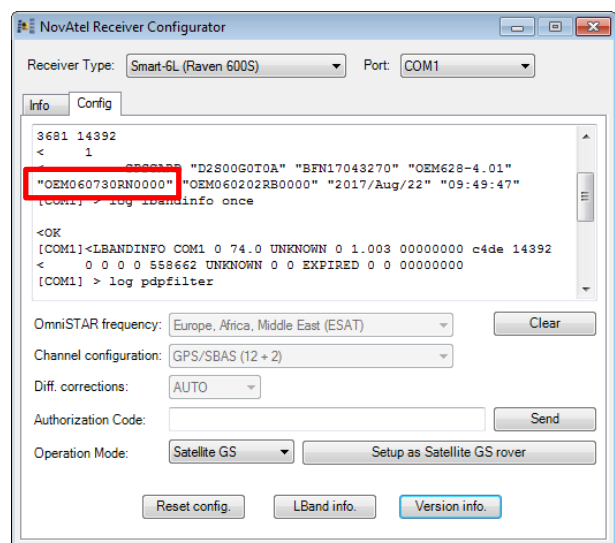


FIGURE 6 CHECK UPDATE



Hoornseweg 22  
1775 RB, Middenmeer  
The Netherlands

Phone: +31 227 54 93 00  
Web: [www.raveneurope.com](http://www.raveneurope.com)  
Email: [service-eu@ravenind.com](mailto:service-eu@ravenind.com)

