



UPDATE MANUAL

# *AsteRx2e(H/L) GPS receiver*





## Table of content

1. Check current AsteRx2e(H/L) firmware .....	3
2. Updating GPS receiver .....	4
3. Checking Update .....	5



# 1. Check current AsteRx2e(H/L) firmware

First, check the receiver type in the terminal and the current firmware version installed.

Open RxControl by pressing: `START >> Programs >> Septentrio RxTools >> RxControl`

For checking the receiver type, the bootloader version and firmware version, go to `Help >> Receiver Identification` (Figure 1). In the section *hwplatform* is the receiver type shown. In the section *firmware* is the firmware version and the bootloader version shown. In Table 1 the different GPS receiver types with its platforms and firmware versions are shown.

The AsteRx2 firmware can be downloaded from [www.sbg.nl](http://www.sbg.nl) under Downloads > Installation & Service. Download the required firmware and put the firmware on a USB stick and then plug it into the terminal.

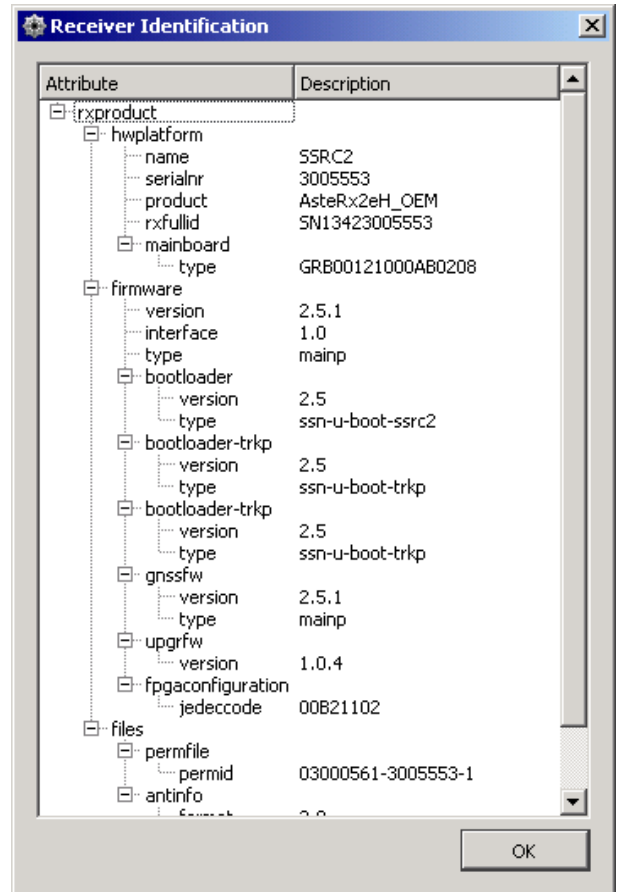


Figure 1 Receiver Identification

Table 1 GPS receiver types

Type GPS receiver	Platform	Upgrade_all version	Firmware version
AsteRx2e	ssrc1	ssrc1-1.0.3_upgrade_all.suf	ssrc1-fw-3.3.0.suf
AsteRx2eH	ssrc2	ssrc2-1.0.4_upgrade_all.suf	ssrc2-fw-3.3.0.suf
AsteRx2eL	ssrc3	ssrc3-1.0.4_upgrade_all.suf	ssrc3-fw-3.3.0.suf



## 2. Updating GPS receiver

To update the receiver, go to **Tools >> RxUpgrade**. The Upgrade wizard is displayed (Figure 2). Click next to proceed.

Choose the type of connection (Figure 3). There are two options to connect:

1. **COM2.** Use a serial connection to update the receiver by choosing **Select Serial Port**.
2. **USB (COM5).** Use the current connection to update the receiver by choosing **Select Connection File**. This connection option can only be used if firmware 2.5.1 or newer is currently installed.

Click next to proceed and choose the appropriate firmware file (Figure 4). First upload the **upgrade\_all** file. This file contains the bootloader firmware. In Table 1 the **upgrade\_all** version is shown which is different for each receiver type. Choose **Next** and **Upgrade** to start uploading the file. After the uploading process is done, choose **Finish**.

The next step is uploading the actual firmware file. Follow the same procedure for the firmware as for the **upgrade\_all** firmware. In Table 1 the firmware version is shown which is different for each receiver type.

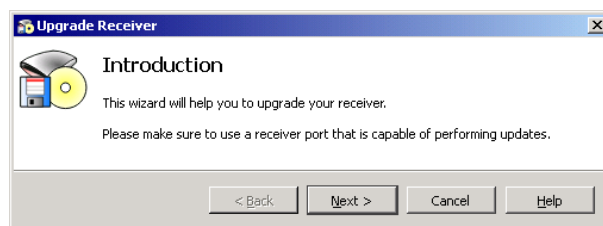


Figure 2 RxUpgrade

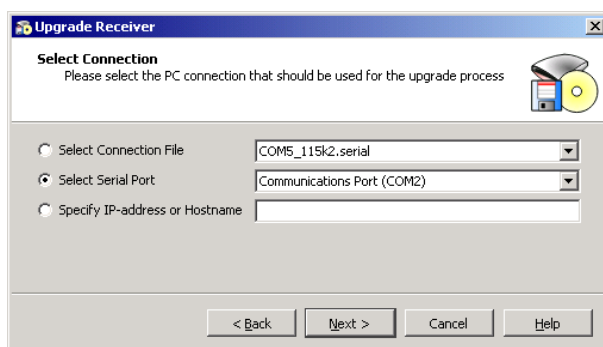


Figure 3 RxUpgrade Select Connection

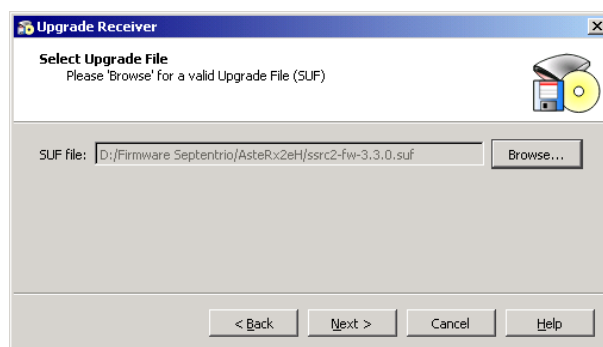


Figure 4 RxUpgrade Select Upgrade File

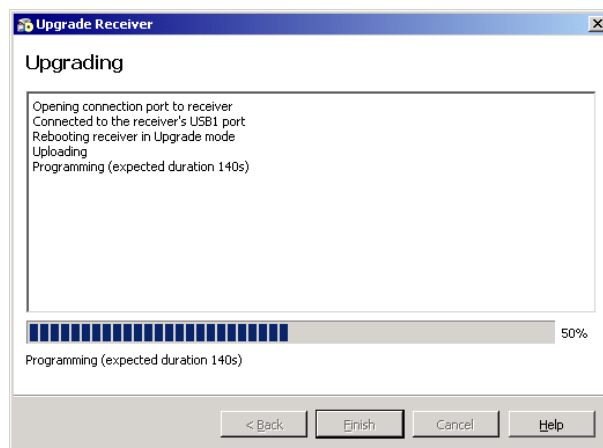


Figure 5 RxUpgrade Programming



## Firmware update AsteRx GPS receiver

### 3. Checking Update

The new receiver firmware is now installed. Check the firmware version in RxControl. Go to Help >> Receiver Identification (Figure 1).

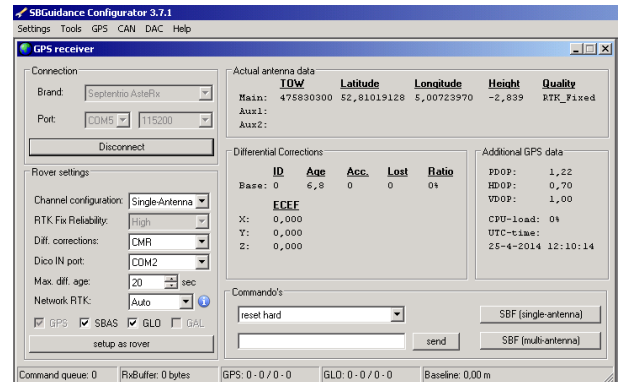
Set up the receiver as a rover by using SBGuidance Configurator 3.7.1 or newer. Go to GPS > GPS receiver (Figure 6).

Select *Septentrio AsteRx* en choose *Connect*.

Select in the section *Rover settings* for Channel Configuration *Single-Antenna* when the receiver is activated for using 1 antenna and *Multi-Antenna* when the receiver is activated for using 2 antennas. Enable GLONASS when the receiver is activated for GLONASS. You can check the activation of the number of antennas and GLONASS in RxControl. Go to Help >> Receiver Identification (Figure 1). An AsteRx2eH can be activated for 1 or 2 antenna(s). An AsteRx2e and an AsteRx2eL got only 1 antenna connection. The Channel Configuration for these receivers is always *Single-Antenna*.

Choose Setup as rover to setup the receiver. Wait until the Command queue is counted down to 0. Finally click on *SBF (single-antenna)* for 1 GPS antenna and on *SBF (multi-antenna)* for 2 GPS antennas.

The GPS receiver should get into RTK-fixed now.



Figur 6 SBGuidance Configurator Setup as rover