



FILE EXCHANGE SYNC CLOUD & DROPBOX

016-8000-033EN REV. A

Configuration Manual
(English) (Translated version)

RAVEN

PREFACE

This configuration manual is intended for persons responsible for installing File Transfer on a SBGuidance system. The manual contains important instructions that should be complied with when commissioning, operating and servicing the SBGuidance system.

This manual has been compiled with the utmost care. Raven Europe assumes no responsibility for any errors or omissions in this document.

Any comments or questions can be sent to service-eu@ravenind.com.

Raven Europe or any of its suppliers will accept no liability for physical or material damage caused whilst using the SBGuidance system.

The installed Raven Europe system produces less than 70dB (A) noise.

This configuration manual uses a number of concepts for extra attention to a few things:



Tip:

Provides recommendations on how certain activities can be performed much easier.



Please note!:

Indicates certain problems that the user should take note of.



Caution!:

Indicates that the machine can be damaged.



Warning!:

Indicates a risk of injury.

DISCLAIMER

WARNING!

- The safety instructions contained in the manuals of the tractor or implements must be complied with at all times.
- Always switch off the tractor before installing or repairing hydraulic and electrical components of the SBGuidance system.
- It is strictly prohibited to use the SBGuidance system on public roads.
- It is strictly prohibited to leave a driving vehicle unattended when the SBGuidance system is switched on. The driver is always responsible for the direction and course of the vehicle.
- To prevent injury or fire, replace defective fuses only with fuses of the same type and amperage.
- The SBGuidance the operating system is not able to detect and avoid obstacles. If there is an obstacle in your path, you will always need to take action for it to be avoided.
- Only allow authorized/qualified persons to operate the system. Authorized/qualified persons are defined as: persons who have read and understood the manual, have been given instructions by a product specialist, and who are both physically and mentally fit and able to operate the system.
- The system contains moving parts! Make sure the immediate environment is clear of people before operating the system.
- In case of system failure or breakdown switch of the tractor and disconnect the electrical power source to avoid further damage. Contact your dealer for further instructions on how to repair your system.
- Always wear personal protective equipment when operating/adjusting/repairing the system outside of the tractor cab.
- In order to prevent power surges from occurring, always start the machine first, before initiating the SBGuidance control system.

PAY ATTENTION!

- Only touch the touch-screen with your finger or by using a special touch-screen stylus/pen. Operating the touch-screen with sharp objects may cause permanent damage to the screen.
- Always consult your supplier as to which products are best suited first before cleaning the touch-screen with chemicals or alcohol.
- If the terminal is not used for a long period, better remove the terminal from the tractor and store in a heated environment. This will extend the life span of the electronic components.
- To prevent theft, it is better to not let the terminal and GPS-antenna unattended in the tractor on the field.

CONTENT

PREFACE.....	3
DISCLAIMER.....	4
CONTENT.....	5
1 REQUIRED SOFTWARE.....	7
1.1 VIPER 4.....	7
1.1.1 SYNC SOFTWARE.....	7
1.1.2 DROPBOX SOFTWARE.....	7
1.1.3 DROPBOX ACCOUNT.....	7
1.1.4 FIELD MANAGER.....	7
1.2 GEOSTAR.....	8
1.2.1 SYNC SOFTWARE.....	8
1.2.2 SYNC ACCOUNT.....	8
1.2.3 FIELD MANAGER.....	8
2 INSTALLATION.....	9
2.1 PREPARATION INSTALLATION SYNC ON GEOSTAR.....	9
2.2 INSTALLATION SYNC (GEOSTAR/VIPER4).....	11
2.3 INSTALLATION DROPBOX (ONLY FOR VIPER 4).....	13
2.3.1 ERROR MESSAGE DURING INSTALLATION.....	14

1 REQUIRED SOFTWARE

Depending on which terminal is used (Geostar or Viper4), the required software may differ. Below is a predominance of the various possibilities per terminal.

1.1 VIPER 4

For the installation on a Viper 4 terminal there is the possibility to use Sync or Dropbox.

1.1.1 SYNC SOFTWARE

For the required software in the case of using Sync see section 1.2.1

1.1.2 DROPBOX SOFTWARE

For the installation on a Viper 4 terminal, the latest Dropbox version from the Raven Europe website must be used. Place this on a USB drive. The installation procedure will follow later in this manual.

1.1.3 DROPBOX ACCOUNT

Make sure that you have a Dropbox-account available before the installation. If needed, request an account on the Dropbox-website:

<https://www.dropbox.com/login>. Preferably, have a Dropbox-account only for the field exchange application. Then, there is no risk that Dropbox uploads all kind of other Dropbox-folders on your computer and overload the computer with data.

1.1.4 FIELD MANAGER

For the Sync file exchange application, at least Field Manager 4.2.3 is required. This means that the software version 4.x of SBGuidance, Base Manager, Update Manager, Machine Manager and Loader must also be present at the terminal. Check, and update if necessary, whether the Field Manager has version 4.2.3 or higher and whether the other applications are 4.x. If needed, see the update manual on the Raven Europe website.

1.2 GEOSTAR

For the installation on a Geostar terminal it is only possible to use the Sync software. Dropbox is no longer supported on Geostar terminals.

1.2.1 SYNC SOFTWARE

For the installation at a Viper terminal, the latest Sync version and associated certificates of the Raven Europe website must be used (Figure 1). The installation procedure will follow later in this manual.

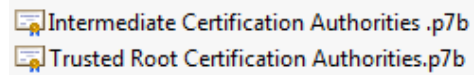


FIGURE 1 CERTIFICATES

1.2.2 SYNC ACCOUNT

Make sure that a Sync account is available for the installation. If you do not already have a Sync account, you can request it from the Sync website: <https://www.sync.com/signup>. It is desirable to have a separate account for the file exchange application. Then, there is no risk that Sync uploads all kind of other Sync-folders on your computer and overload the computer with data.

1.2.3 FIELD MANAGER

For the Sync file exchange application, at least Field Manager 4.2.3 is required. This means that the software version 4.x of SBGuidance, Base Manager, Update Manager, Machine Manager and Loader must also be present at the terminal. Check, and update if necessary, whether the Field Manager has version 4.2.3 or higher and whether the other applications are 4.x. If needed, see the update manual on the Raven Europe website.

2 INSTALLATION

2.1 PREPARATION INSTALLATION SYNC ON GEOSTAR

(These steps are only necessary if Dropbox has never been installed on the Geostar)

Complete the following steps to install the Sync application on a Geostar 200/250 terminal:

1. Open the *Control Panel* by going to *Windows > Settings > Control Panel*. Go to Internet Options there, a screen like in Figure 4 will open.
2. Click in Figure 4 on *Certificates*. The screen from Figure 2 will open.
3. Go to the *Trusted Root Certification Authorities* tab and click on *Import*. A new screen appears, click in this screen on *next*. The screen from Figure 3 opens. Click in this screen on *Browse*. Select behind *Files of Type; all files*. Afterwards, choose the correct file with the name *Trusted Root Certification Authorities.p7b*, which is already on the USB drive.
4. Click on *Next* (Figure 3) and on *Finish*.
5. After clicking *Finish* a warning message will occur (Figure 5). Click on *Yes*. This warning message will occur about 35 times. Therefore click on *Yes* 35 times. Afterwards the warning message disappears and the message *"the import was succesful"* appears.
6. Go to the *intermediate Certification Authorities* tab and click on *Import* and *Next*. The screen from Figure 7 appears. Click in this screen on *Browse* and select behind *Files of Type; all files*. Afterwards,

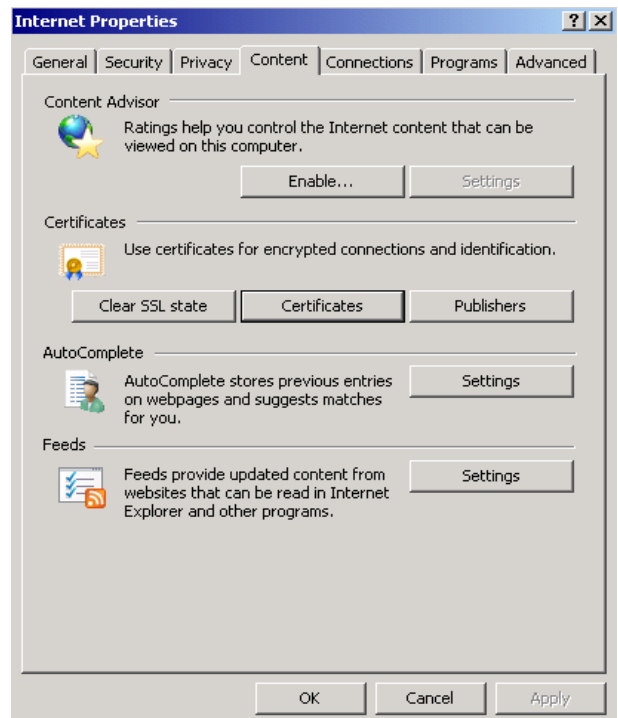


FIGURE 4 INTERNET PROPERTIES

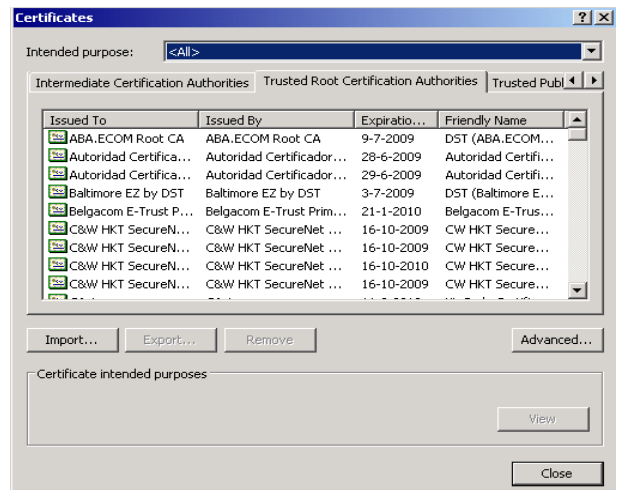


FIGURE 2 CERTIFICATES

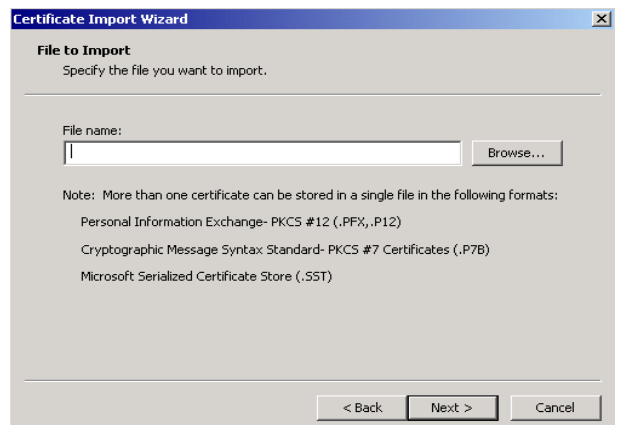


FIGURE 3 IMPORT CERTIFICATES

choose the correct file with the name *Intermediate Certification Authorities.p7b*

7. Click on *Next* (Figure 8) and on *Finish*. Afterwards the message *the "the import was succesful"* appears.

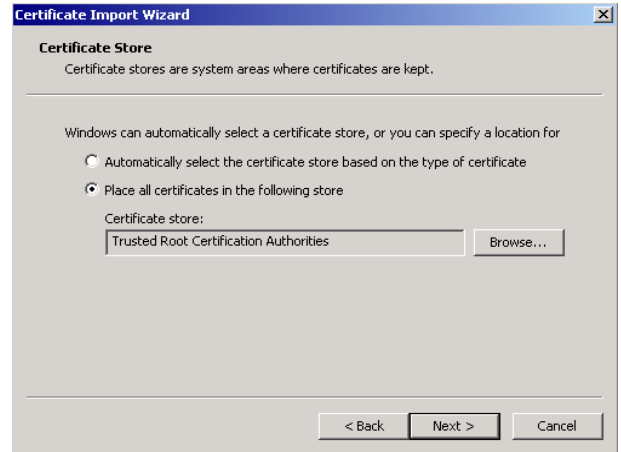


FIGURE 5 IMPORT WIZARD CERTIFICATES



FIGURE 6 SECURITY WARNING

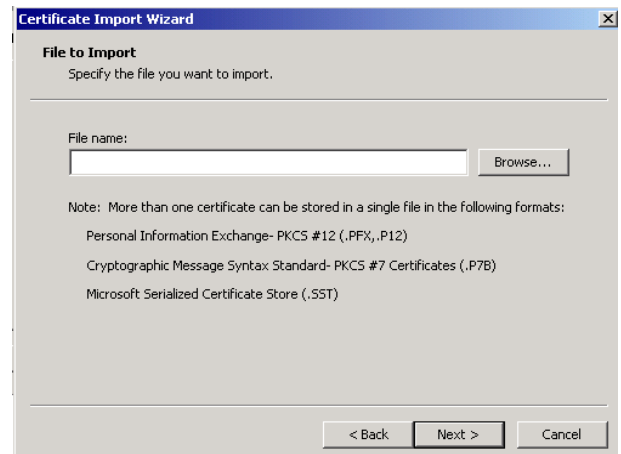


FIGURE 7 IMPORT WIZARD

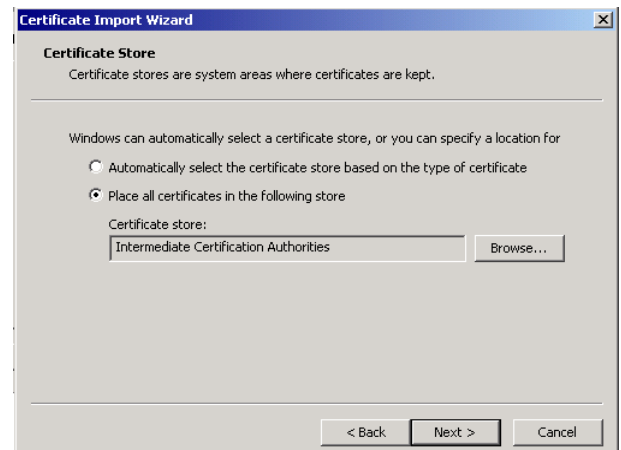


FIGURE 8 IMPORT WIZARD CERTIFICATES

2.2 INSTALLATION SYNC (GEOSTAR/VIPER4)

1. (This step is only for Viper 4). For Sync installation on a Geostar go to step 2. Place the file "Register Run – Sync-taskbar.reg" on a USB drive. Insert the USB drive in the terminal and press ALT + SBGuidance. Go to the USB drive (Figure 9). Doubleclick on the file "Register Run – Sync-taskbar.reg" and go back to the Loader.

2. Make sure the terminal has an internet connection. Start SBGuidance once before you continue the Sync installation. The Windows time is then synchronised with the GPS time. Double click the Sync-installer.exe (on USB drive). An initialization screen will appear (Figure 10).

3. After a few minutes a new screen appears (Figure 11). Choose "Create a new Sync account" if you do not already have a Sync account. If you already have a Sync account select "Use an existing Sync Account" and click *next*. Enter the email address and password of the Sync account in this screen (Figure 12) and click *next*. Then click on "*I agree to the Sync.com Terms Of Service*" and click *next*.

4. Adjust the Sync folder location by clicking *browse*. Sync folder must be in (Figure 16):
 - a. Geostar: C:\Documents and Settings\Administrator
 - b. Viper4: C:\Users\User

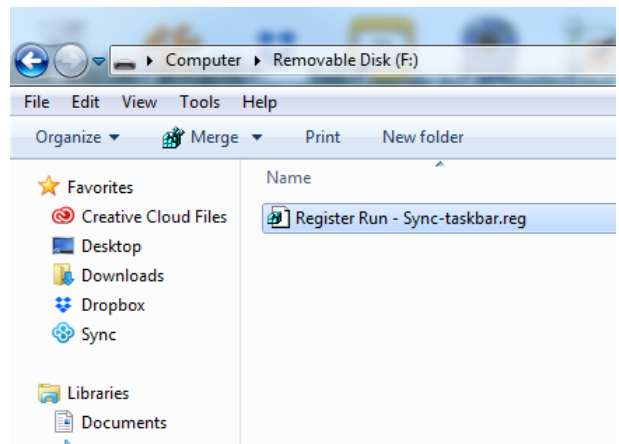


FIGURE 9 REGISTER RUN FILE

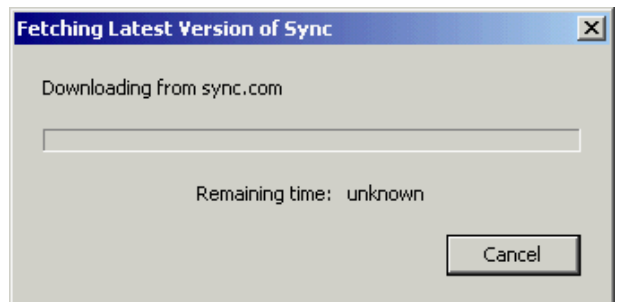


FIGURE 10 SYNC INSTALLATION

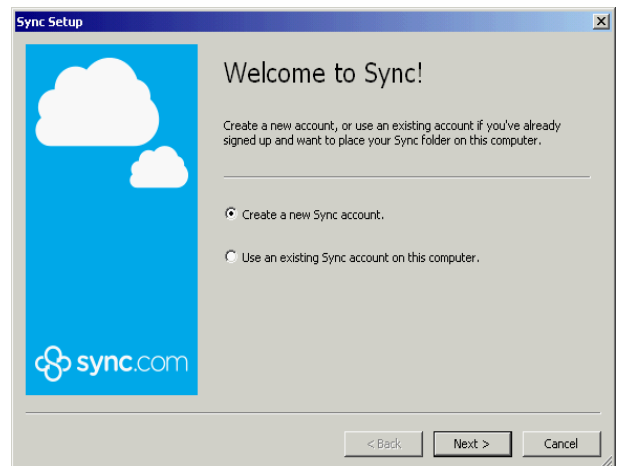


FIGURE 11 SYNC SETUP



FIGURE 12 SYNC ACCOUNT



Please note!

Make sure that step 4 is executed correctly, if this is not the case this will cause problems later in the configuration process.

5. Click *Next*. The installation is shown to be completed. Two options can be enabled at the bottom of the screen. *Install updates automatically* and *Send error and debug messages to Sync*. Uncheck both these options and click *Finish*.



FIGURE 16 SYNC FOLDER LOCATION

6. If this is the first computer to use this Sync account, add a folder named "SBG" in the Sync folder on the terminal. A folder with the name "Export" must be added to this SBG folder. If the Sync account has already been used on other computers or terminals, only this folder structure needs to be checked. The Sync folder is located in the following location:
 - c. Geostar: C:\Documents and Settings\Administrator
 - d. Viper4: C:\Users\User

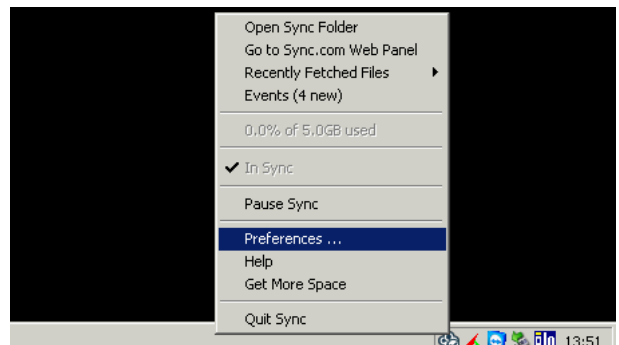


FIGURE 13 SYNC PREFERENCES

When using a Viper, the installation is finished. Restart the terminal and start SBGuidance once to start synchronization.

7. (From here only applicable to Geostar). Click the Sync icon at the bottom right of the Windows screen. If the Sync symbol is not available, close the SBGuidance Loader by pressing Alt + F4 on the keyboard. Click on *Preferences* to open the Sync.com Control Panel (Figure 13).

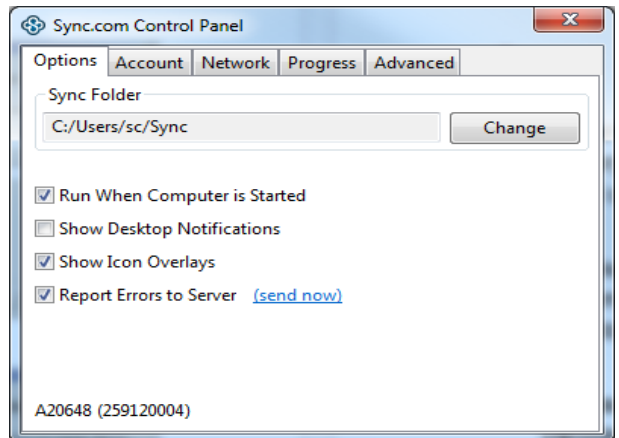


FIGURE 14 SYNC OPTIONS

8. Under the "Options" tab, all options must be checked except the "Show Desktop Notifications" option (Figure 14).

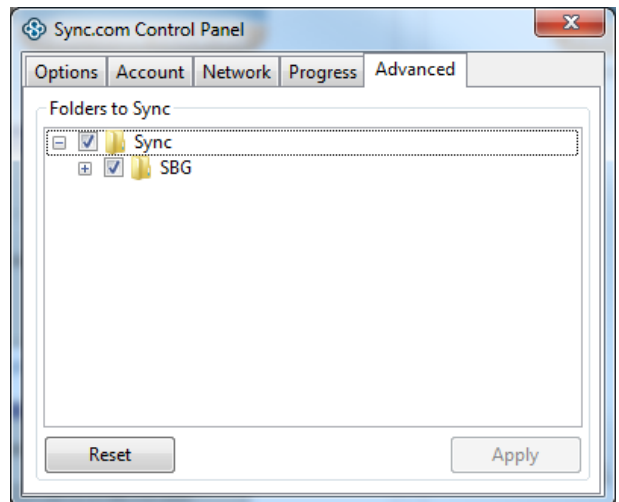


FIGURE 15 SYNC ADVANCED

9. Go to the *Advance* tab and make sure that only the SBG folder is checked under the Sync folder (Figure 15). This is to prevent too much data on the terminal.
10. In case Sync is used as a replacement for Dropbox, Dropbox must be uninstalled. Go to: "Start>> Programs >> Dropbox>> Uninstall Dropbox" and follow the steps on the screen.
11. Restart the terminal and start SBGuidance to start synchronization.

2.3 INSTALLATION DROPBOX (ONLY FOR VIPER 4)

Take for the Geostar computer the following steps to install the Dropbox-application:

1. Start SBGuidance one time before installation. The Windows time is correctly set after this process.
2. Copy the Dropbox installer to the *My Documents* folder of the field computer.
3. Double click the Dropbox installer. A setup wizard will run automatically. After a couple of minutes a new screen appears (Figure 17).
4. Fill in the email address and password of the Dropbox-account (Figure 17). After a while a new screen appears (Figure 18)
5. If this is the first computer on which your Dropbox account is used, a folder with the name 'SBG' should be added in the Dropbox folder on your computer. In this SBG folder a folder with the name 'Export' should be added. If the Dropbox account is used before on other computers just check

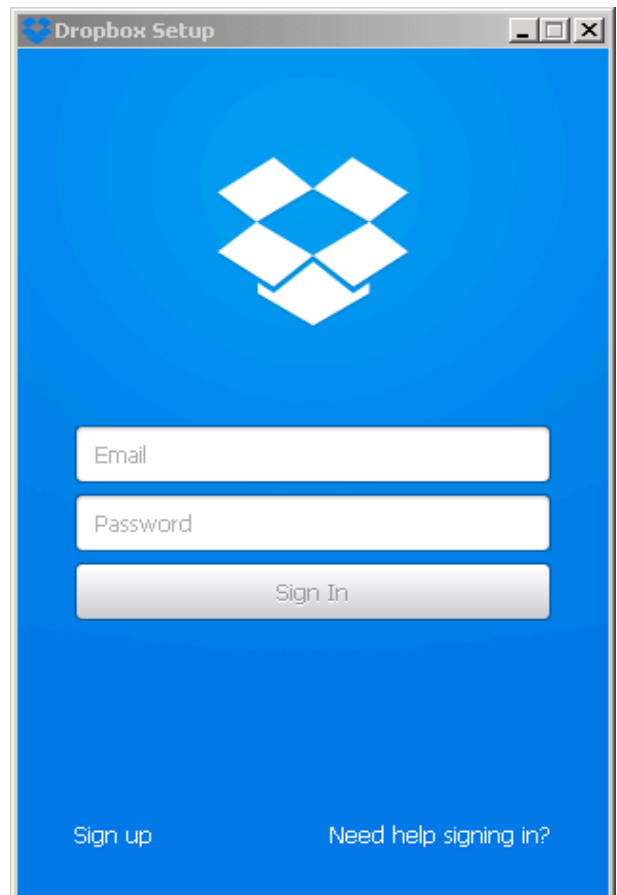


FIGURE 17 DROPBOX SETUP

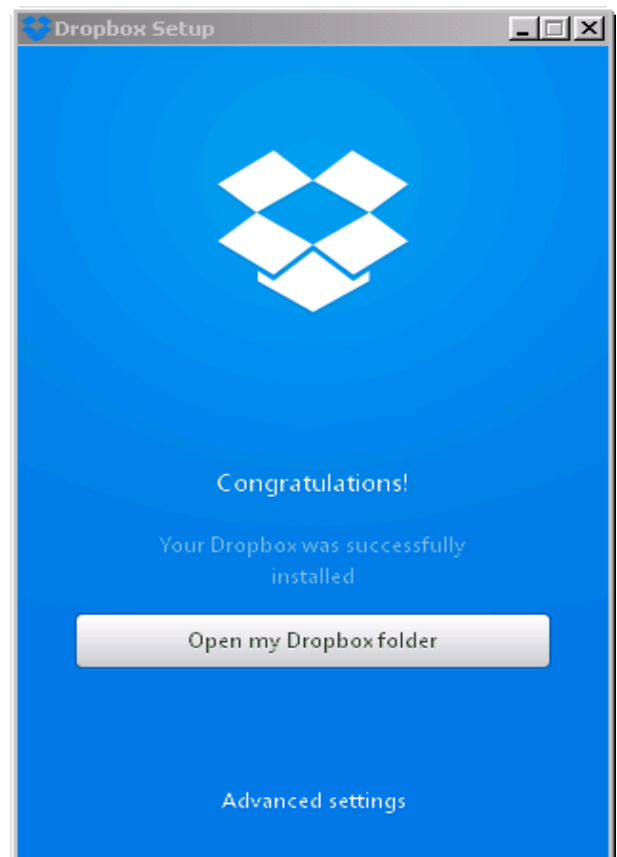


FIGURE 18 DROPBOX SETUP

the folder structure in the Dropbox folder.
In the following folder on the computer you can find the Dropbox-folder: Local Disk C: > Users > User.

6. Click in the screen *advanced settings*. A new screen will appear (Figure 19).
7. Click in this screen on *Change settings*. A new screen will appear (Figure 20).
8. Select in this screen only the SBG folder. The remaining folders should not be selected to prevent too much data on the Viper 4 computer (Figure 20).
9. Restart the terminal and start SBGuidance to start synchronization.

2.3.1 ERROR MESSAGE DURING INSTALLATION

During the installation of Sync Cloud on a GeoStar terminal the following error message can show up:
Sync-taskabar Error, Execution of command 'taskkill.exe /f /m sync-worker.exe' failed

Copy the file "TASKKILL.EXE" from the USB drive to c:\Windows\system32\

Copy the file "Taskkill activation.bat" from the USB drive to My Documents. Double click on this file.

Reboot the system and continue the installation.

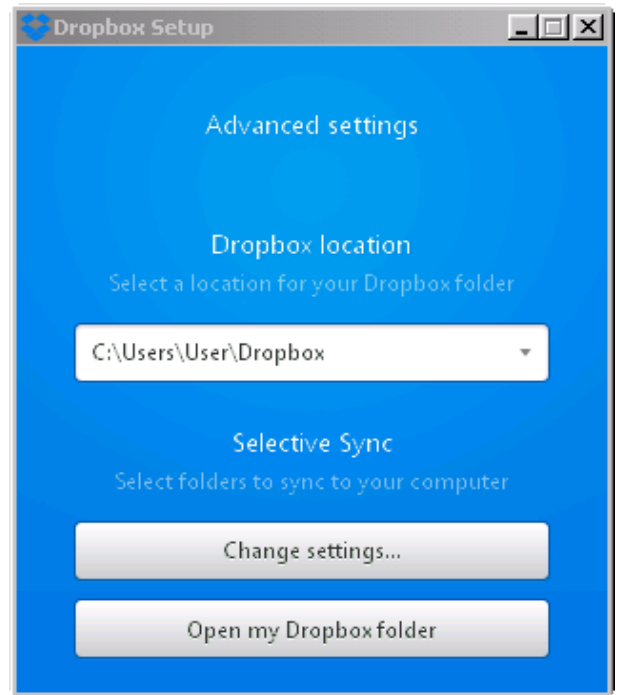


FIGURE 19 DROPBOX SETUP

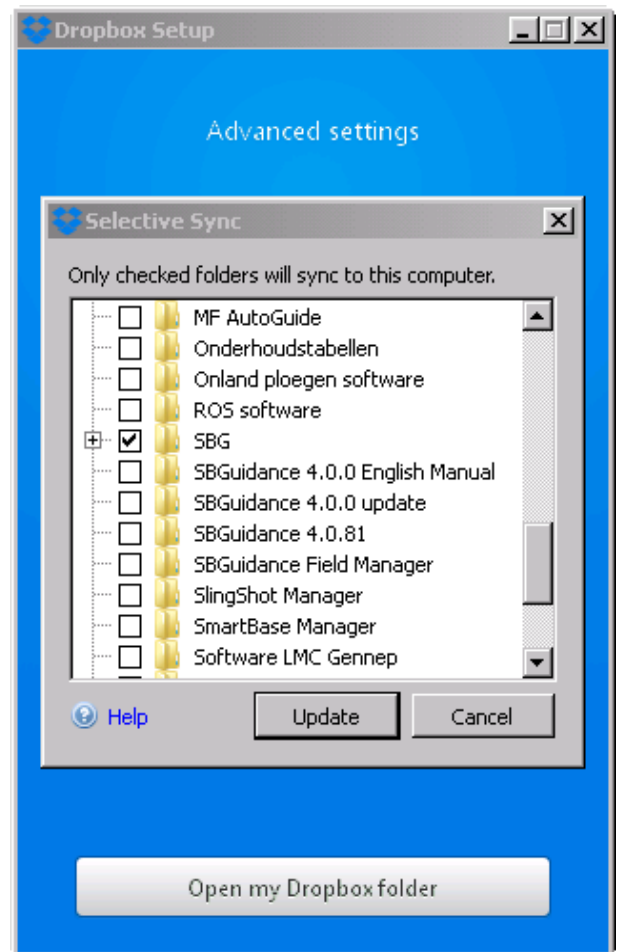


FIGURE 20 DROPBOX SETUP

Hoornseweg 22
1775 RB, Middenmeer
The Netherlands

Phone: +31 227 54 93 00
Web: www.raveneurope.com
Email: service-eu@ravenind.com

R A V E N