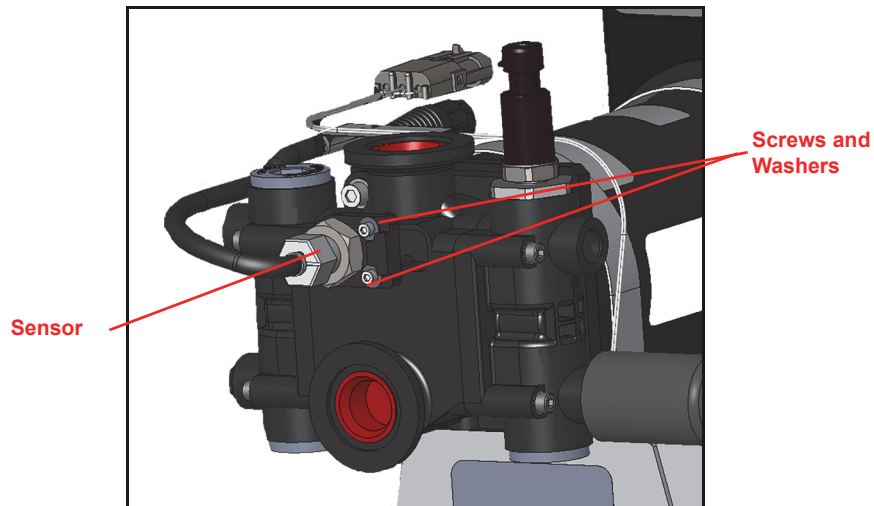


# Flow Monitor Update Installation

This sheet provides the installation instructions for updating a Raven flow monitor.

1. Remove the existing sensor and bracket.

FIGURE 1. Sensor Assembly

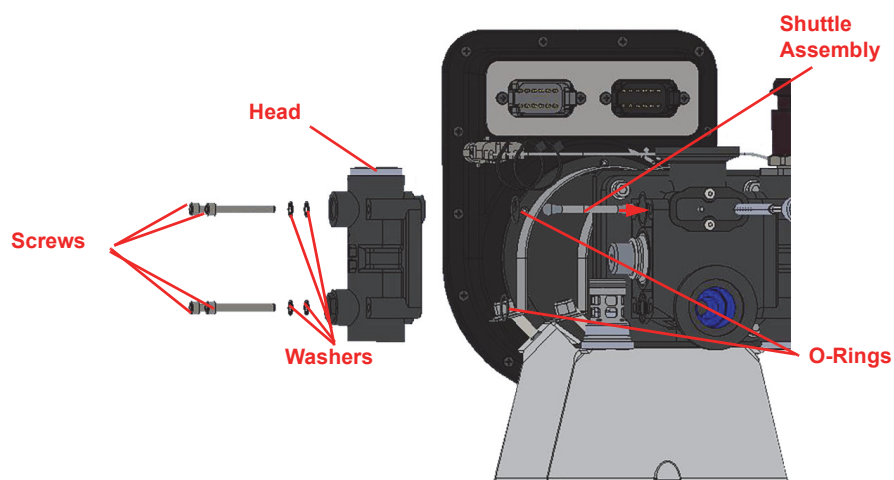


2. Install the new sensor using the provided Torx head screws and washers.

**Note:** Do not over tighten as that will damage the sensor housing.

3. Verify the valves on the inlet side of the pump are turned off and all pressure is relieved on the discharge side of the pump.
4. Remove one of the heads by removing the four screws and washer that secure the pump to the head. Note if any O-rings come out of place.

FIGURE 2. Shuttle Installation



5. Remove the ball, magnet assembly, and ball from the flow monitor shuttle assembly.
6. Insert the new flow monitor shuttle.

**Important:** Use the low volume shuttle in the low volume pump and the high volume shuttle in the high volume pump.

**FIGURE 3. High and Low Volume Shuttles**

**High Volume Pump Shuttle**  
**063-0173-966**



**Low Volume Pump Shuttle**  
**063-0173-967**



7. Verify all O-rings are in place.
8. Reinstall the pump head. Tighten the #10 screws to 17 in-lbs.