

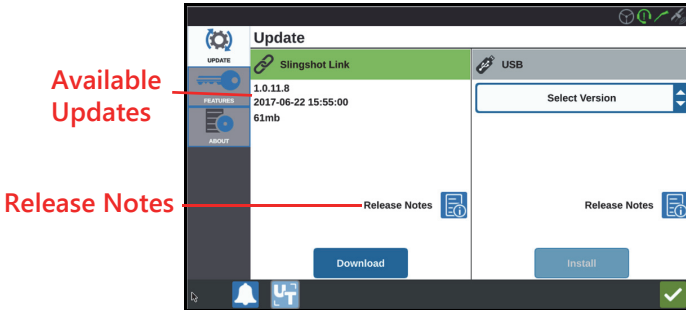
SOFTWARE AND HARDWARE UPDATES

SOFTWARE

To check for CRX software updates via Slingshot:





1. Press Software Update on the CRX Settings page. The Update page will open.
2. If there is an update available via Slingshot it will be listed under the Slingshot Link column. To learn more information about what is included in the update, read the release notes.



3. To install the update, press download. The update will download to the CRX. After the CRX update has downloaded, the Download button will change to Install. Press Install to install the software update.



4. If desired, press the Features tab to access the desired unlock. The following options are available:
 - GPS Unlocks: Unlock to access more precise GPS corrections.
 - Task Controller: The task controller unlock is required to allow the UT to automatically control sections.
 - Multi-VRA: Unlock Multi-VRA to use prescription maps to automatically apply multiple products to a field.
 - UT: UT allows the user to monitor and adjust nodes connected to the ISOBUS network.
 - VRA: Unlock VRA to use a prescription map to automatically apply the desired product as configured in the prescription map.
 - Operation Planning: Operation planning allows the creation of headlands, offsets, and guidance lines within an existing boundary. The operation plan can then be selected jobs for various implements.

5. If desired, press the About  tab to view information about the CRX including the software version, when the software version was installed, Run Hours, and Total Run Hours. If desired, press Erase Data to reset the system and erase all data stored on the CRX. This includes all implements, Grower/Farm/Field data, and settings on the CRX.
6. After adjusting all the settings, press Accept .

DOWNLOADING A CRX UPDATE TO USB

To locate and download a CRX software update to a USB stick:

1. On a computer, enter <http://portal.ravenprecision.com/> into the address bar.
2. Press Enter.
3. Click Product Documentation.
4. Click CRX.
5. Navigate to the dropdown.
6. Select the desired Software.

NOTE: If desired, review the download and installation instructions.

7. Select Save As from the Save dropdown.
8. Select the desktop as the desired save location.
9. Press Save.
10. Extract the files from the .zip file onto the computer.

NOTE: do not rename the extracted files as this will not allow the software to download to the field computer.

11. Transfer the extracted files to the USB flash drive.

INSTALLING CRX UPDATES VIA USB

To apply a software update to the CRX device:

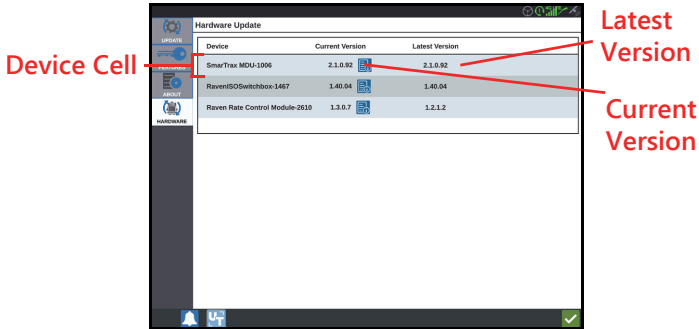
1. Insert the USB flash drive with the CRX update in the required folder into the CRX device.
2. Once the update file is detected on the USB drive, select the desired update from the USB drop down list then press Install.

ISO NODE AND GPS UPDATES

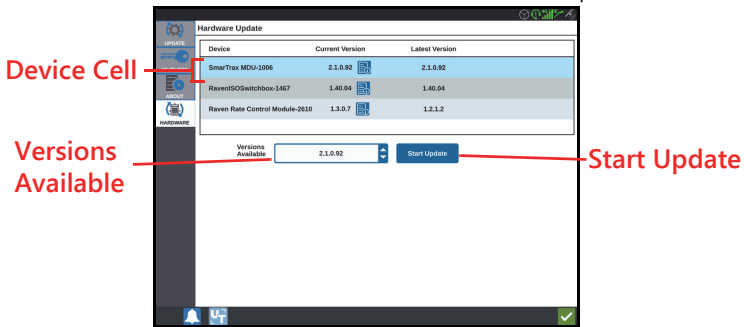
To check for ISO Node or GPS updates via Slingshot:





1. Press Software Update on the CRX Settings page. The Update page will open.
2. Select the Hardware tab.
3. If there is an update available via Slingshot it will be listed under on the Hardware Update page. To learn more information about the current version, select the information icon. To see the if there is a newer version, compare the Current Version to the Latest Version



4. To install the update, press anywhere on the device cell except the information icon. A Versions Available field will open below the list of Device Cells.
5. Select the desired version from the Versions Available drop down.



6. Select Start Update. The update will install.
7. If desired, press the About  tab to view information about the CRX including the software version, when the software version was installed, Run Hours, and Total Run Hours. If desired, press Erase Data to reset the system and erase all data stored on the CRX. This includes all implements, Grower/Farm/Field data, and settings on the CRX.
8. After adjusting all the settings, press Accept  .