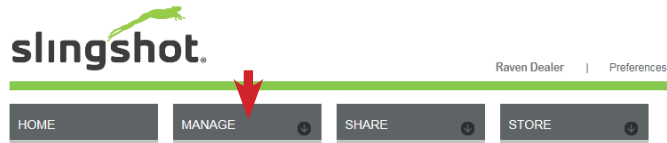


CREATE A STREET MAP

You will need a Raven Slingshot® online account to create a street map. Please visit ravenslingshot.com and select the *Request Account* hyperlink at the top of the web page. Once logged into your account, select the **Manage** drop-down from the top of the page and then select *Street Maps*.



Select a location on the map by either a search address (1), a point on the map (2), or entering latitude and longitude coordinates (3). This will create the center point for the map you will create. You can change this point at any time during the creation process. Use the *Size* slider bar to increase or decrease your map size or enter a custom size. The map size is measured in miles or kilometers square.



Click on the map to select the street map generation area.

Size:

Owner: Raven Dealer

Name:

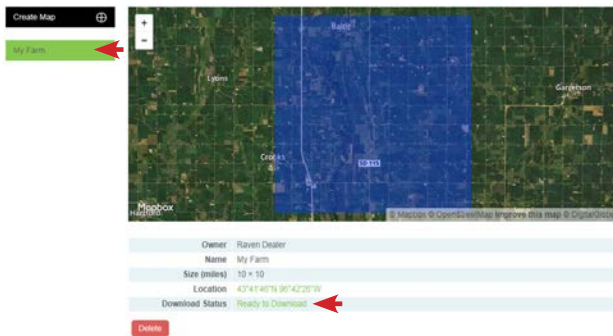
Latitude:

Longitude:

Create

Give the map a name.

Select the **Create** button.



Once processed, your map will display on the left navigation panel. Select your map and then the *Ready to Download* link to copy it to your USB drive.

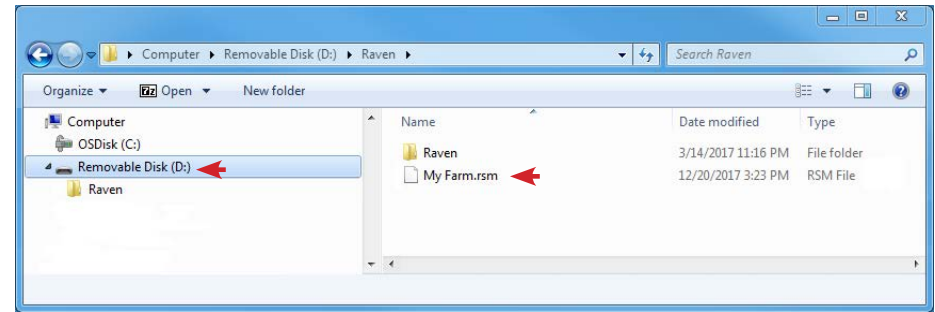
Your street map file (.rsm) must be copied to the root directory of your USB drive!

You can also delete your map by selecting the **Delete** button.

CR7™ STREET MAP

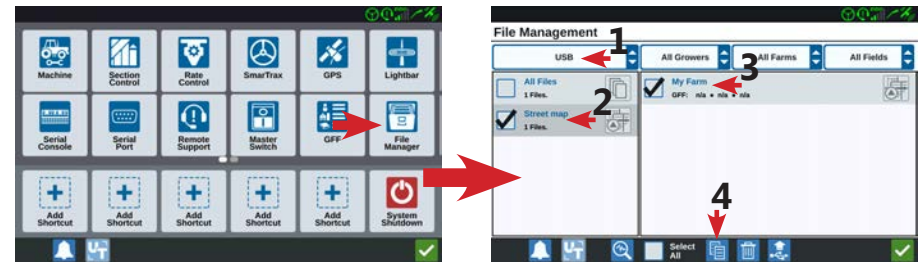
STREET MAP LOCATION ON USB DRIVE

Street maps must be located on the root directory of your USB drive for your CR7™ to automatically find them.

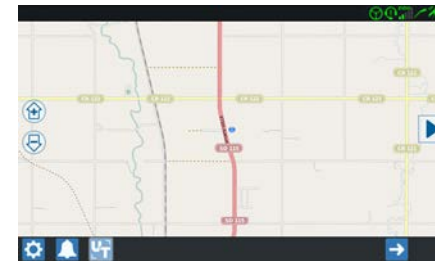


LOAD A STREET MAP

Insert your USB drive that has your street map into your CR7™. Select the **File Manager** button from your *Settings* page. Select *USB* as your source, then *Street map*, and then your street map file. Select the **Copy** button.



Once completed, your street map will display on the home page. *You must have valid GPS for your location and street map to show on the home page!*



DELETE A STREET MAP FROM MEMORY

Street maps cannot be removed from internal memory so please load only the street maps for the locations you are going to operate in!