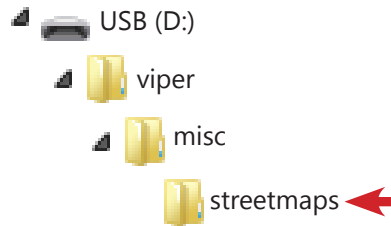
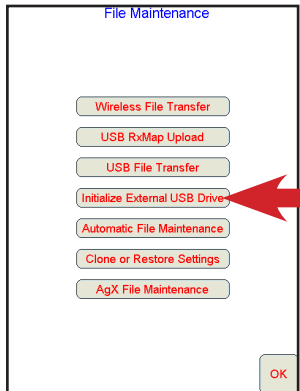


DOWNLOAD STREETMAPS

Current streetmaps will only work with software 3.10.3+. Visit <http://www.census.gov/geo/maps-data/data/tiger-line.html> and select the year tab that offers the *Web interface* option under the **Download** button. Choose *Roads* from the *Select a layer type* dropdown. Under *All Roads* select the state and then county to download. The download is a zip file that needs to be unzipped to another folder. The .shp, .shx and .dbf are the only files needed from this package. The county files can be renamed (optional) so make sure all three files have the exact spelling.

PREPARE THE USB DRIVE

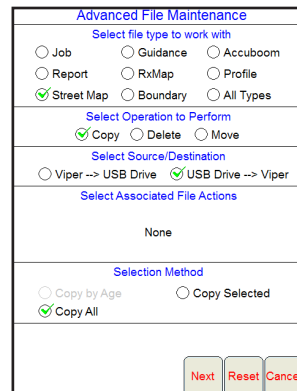
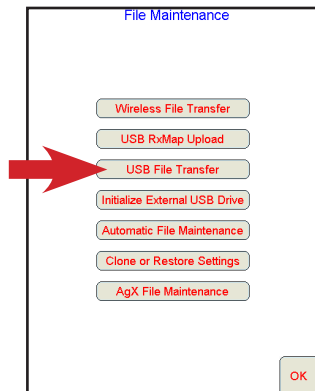
The USB drive will need to be initialized. Select the **Menu, File Maint.** and then the **Initialize External USB Drive** buttons. After initialization, copy the three files for each of the county maps to the **streetmaps** folder that was created.



Copy the .shp, .shx and .dbf files for each county map here.

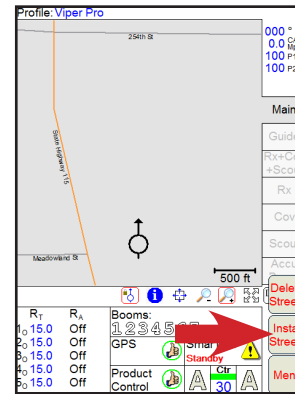
LOAD STREETMAPS TO INTERNAL MEMORY

Select the **Menu, File Maint.** and then the **USB File Transfer** buttons. Select *Street Map, Copy or Move, USB Drive --> Viper*, then either *Copy Selected* or *Copy All*. Select the **Next** button to choose your map or finish the load process.



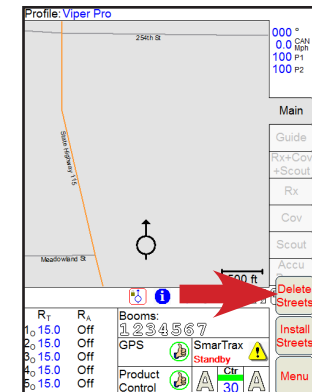
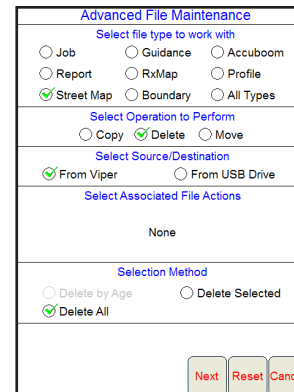
INSTALL STREET MAPS TO WORKING MEMORY

Select the **Menu, Setup, Maps, Street Map** buttons. Select the **Install Streets** button. All county maps loaded to internal memory will be installed. Best practice is to only load and install the county maps that are operated in to conserve Viper Pro memory resources.



DELETING STREET MAPS

Street maps are saved in two places, internal memory and working memory. To delete street maps from internal memory, select the **Menu, File Maint., USB File Transfer** buttons. Select *Street Map, Delete, From Viper*, then either *Delete Selected* or *Delete All*. Select the **Next** button to choose your map or finish the delete process. To delete street maps from working memory, select the **Menu, Setup, Maps, Street Map** buttons. Select the **Delete Streets** button. All street maps will be deleted from working memory.



To remove street maps completely, they must be deleted from both memory locations. Deleting maps from either location will not affect the other one.

WORKING WITH STREETMAPS