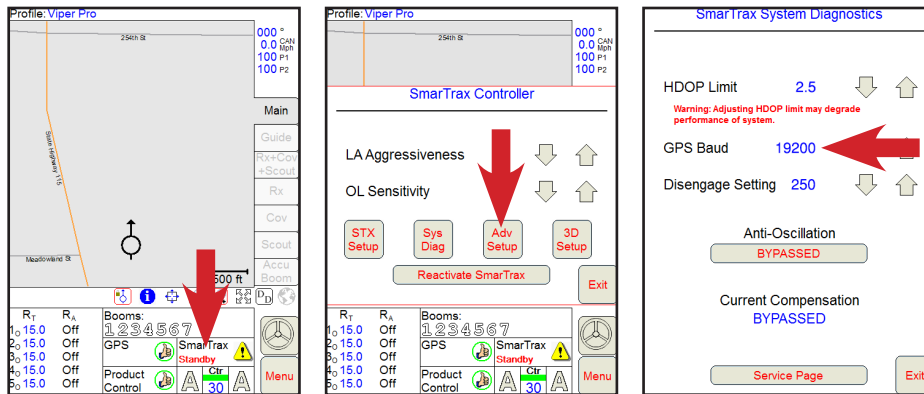


GPS TO STEERING NODE/ECU

GPS must be established to the steering node/ECU (SmarTrax™, SmarTrax™ RTK, or SmarTrax™ MD) first before it will work with the Viper Pro. A solid *Diag 1* light on the node/ECU indicates GPS is present.

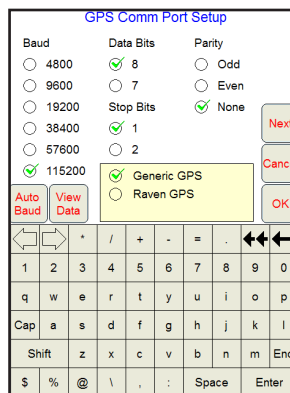


If this light is not on solid then check cabling and all connections. Select the **Smar-Trax** panel and then the **Adv Setup** Button. Make sure the *GPS Baud* rate matches the output baud rate of the GPS receiver, typically 19200.



GPS TO VIPER PRO FROM STEERING SYSTEM

To pass through the GPS data from the steering system to the Viper Pro, select the **Menu, Setup, Comm Ports** buttons. On the *GPS Comm Port Setup* page, select 115200 (typical) for the *Baud* rate or select the **Auto Baud** button to automatically set the baud rate. *Generic GPS* should be selected unless an older Raven Invicta receiver is connected (*Raven GPS*) to the steering system. Leave the *Data Bits* (8), *Stop Bits* (1) and *Parity* (None) at defaults. Select the **OK** button when finished.



SET UP GUIDANCE MESSAGES

Select the **Menu, Setup, Light bar** buttons. Select the *Send Guidance Message* option to establish the communication link between the Viper Pro and the steering system. The *On-Screen Lightbar* and *External Lightbar* features (optional) can also be selected on this page. Select the **OK** button to complete the steering setup for the Viper Pro.

