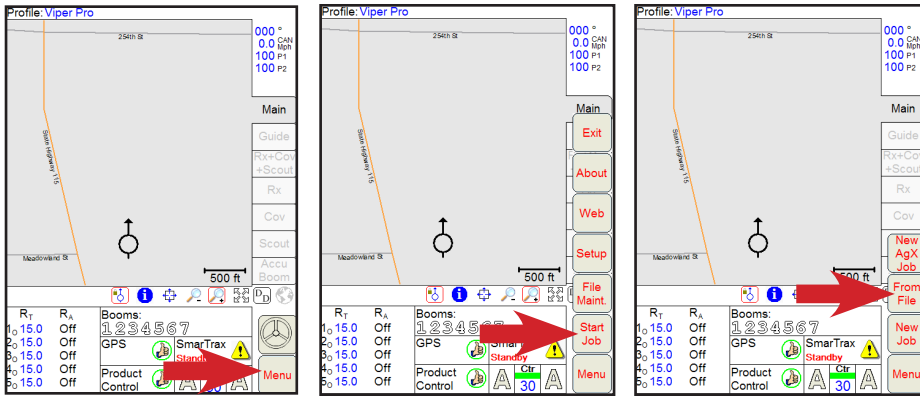


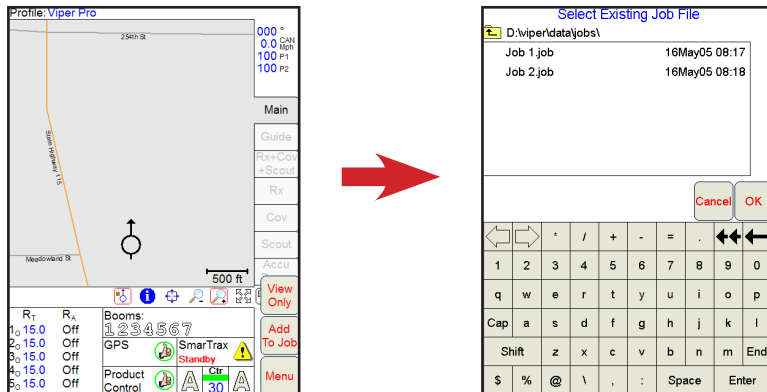
START JOB SETUP

Select the **Menu, Start Job**, then **From File** buttons.



FROM FILE OPTIONS

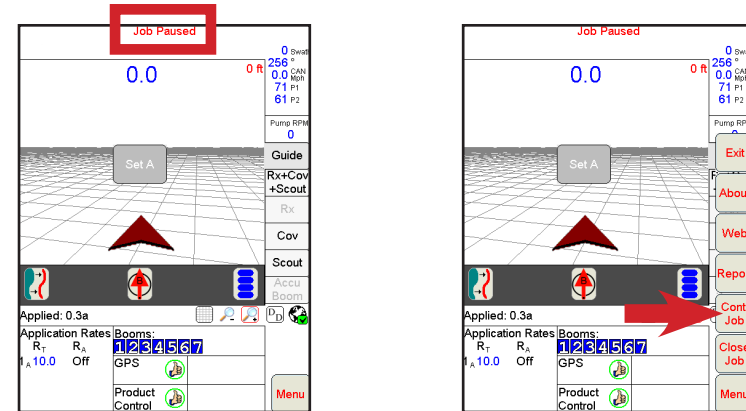
Select either **View Only** or **Add To Job** then select the specific job to either view or add to. Select the **OK** button when finished.



View Only	Can view previous job details but any application added in this mode WILL NOT be recorded or saved
Add To Job	Can view previous job details and any application added in this mode will be recorded and saved upon job closing.

CONTINUING A PREVIOUS JOB

Any previous job, whether just viewing or adding to, will start in *Paused* Mode. The job must be resumed before any additional application can be recorded (**Add To Job** option only). To resume any previous job, select the **Cont. Job** button and switch your product control to either *Manual* or *Automatic* from the main run screen.



STARTING A PREVIOUS JOB