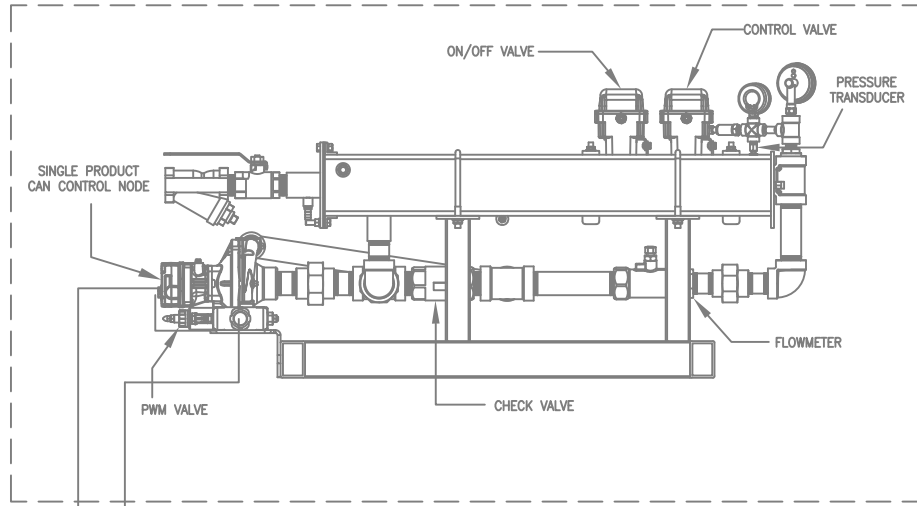


ISOBUS ACCUFLOW HP, 6 SECTION BAR

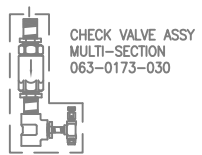
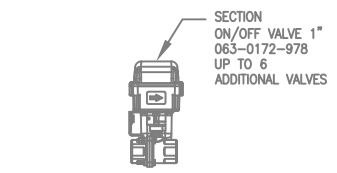
REFER TO SAFETY SECTION IN MANUAL

ISOBUS ACCUFLOW HP 6 SECTION BAR ELECTRONICS KIT 117-6300-002



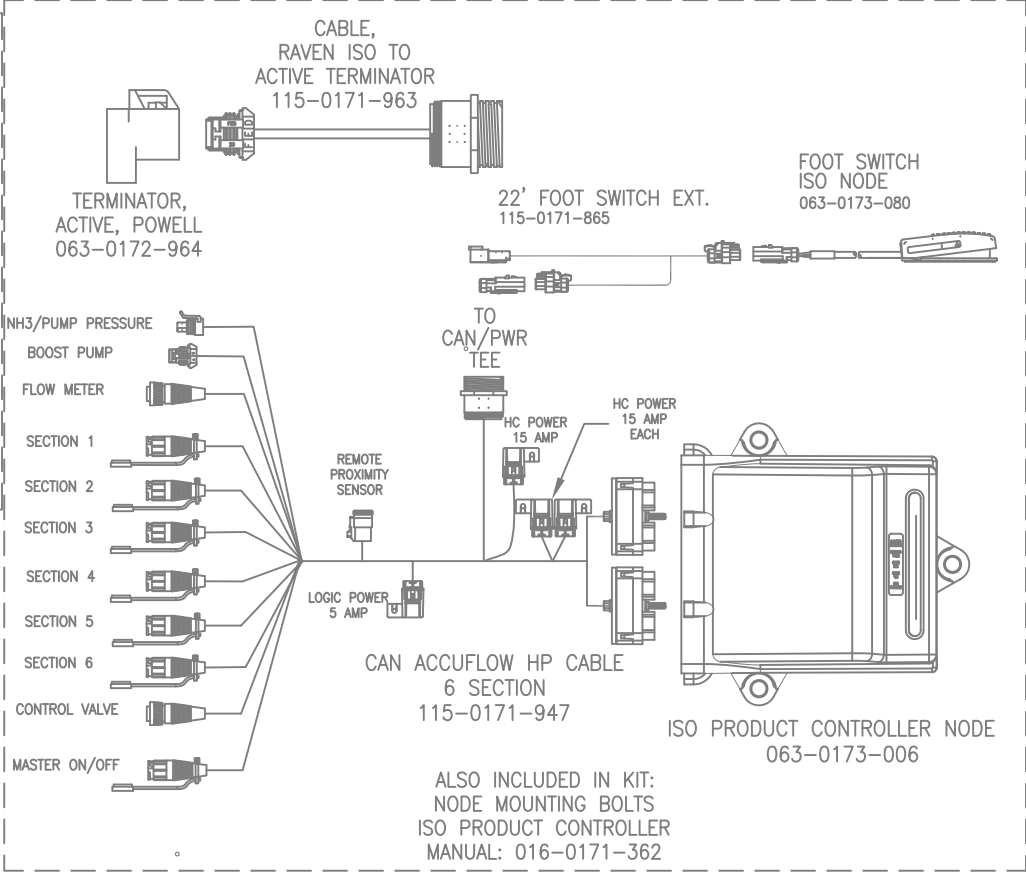
TO TRACTOR HYDRAULICS
T P

ACCUFLOW HP KIT **VAPOR TUBES SOLD SEPERATELY**
 TWO VALVE: 117-0171-392 3/4"- 117-0171-409 (2 TUBE KIT)
 FAST VALVE: 117-0171-393 1/2"- 117-0171-410 (4 TUBE KIT)



ON/OFF VALVE EXTENSION CABLES: (OPTIONAL)
 6': 115-0171-832
 12': 115-0171-833
 24': 115-0171-834

Optional:
 PROXIMITY SENSOR KIT 117-0171-298
 PROX SENSOR EXTENSION CABLE, 20' 115-0171-501



ALSO INCLUDED IN KIT:
 NODE MOUNTING BOLTS
 ISO PRODUCT CONTROLLER
 MANUAL: 016-0171-362

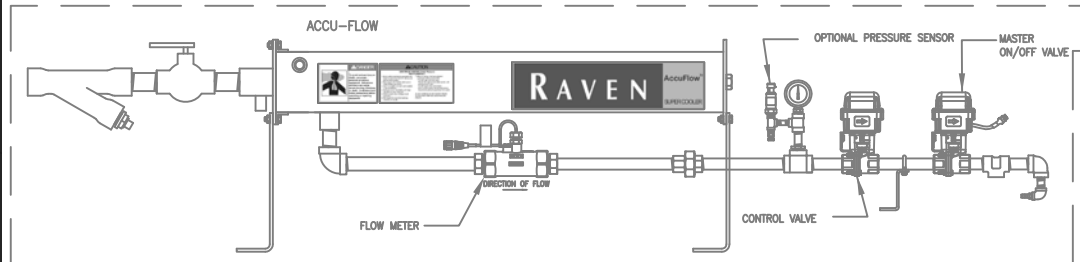
NOTE:
 REFER TO DWG. 054-6000-001 FOR OTHER SYSTEM COMPONENTS.
 PURCHASE ISOBUS HITCH TO RAVEN ECU CABLE SEPARATELY.

RELEASED DATE	ECO NO.	PROD. MGR.	SERV.	PROD. CHAMP.	ENG.	DRAFT.	REV.	DRAWING NO.
10/18/10	E16352	JAB	AT	TLH	DLF	MAP	A	054-6300-002
5/26/11	E17536	JAB	TAC	GLE	CRS	AJK2	B	054-6300-002

ISOBUS ACCUFLOW, 6 SECTION BAR

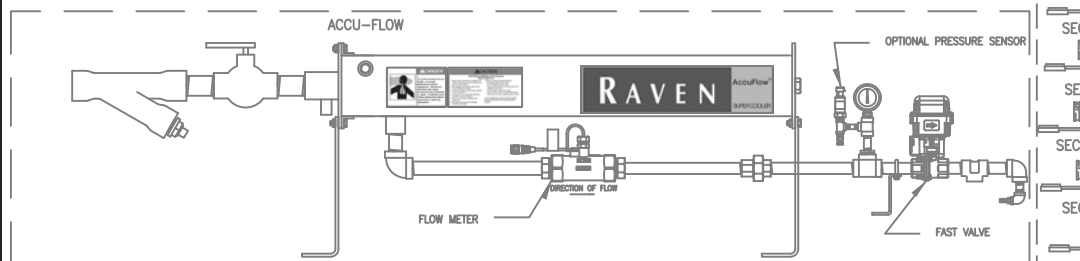
REFER TO SAFETY SECTION IN MANUAL

ACCUFLOW KIT, TWO VALVE
117-0171-384 -KIT INCLUDES SPACE SAVER KIT (SHOWN WITHOUT SPACE SAVER KIT)

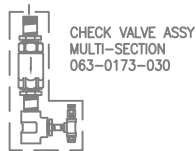
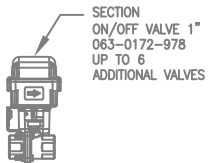


****VAPOR TUBES SOLD SEPERATELY****
3/4"- 117-0171-409 (2 TUBE KIT)
1/2"- 117-0171-410 (4 TUBE KIT)

ACCUFLOW KIT, FAST VALVE
117-0171-386 -KIT INCLUDES SPACE SAVER KIT (SHOWN WITHOUT SPACE SAVER KIT)



****VAPOR TUBES SOLD SEPERATELY****
3/4"- 117-0171-409 (2 TUBE KIT)
1/2"- 117-0171-410 (4 TUBE KIT)



ON/OFF VALVE EXTENSION CABLES: (OPTIONAL) NODE MOUNTING KIT (OPTIONAL): 117-0171-299
6': 115-0171-832
12': 115-0171-833
24': 115-0171-834

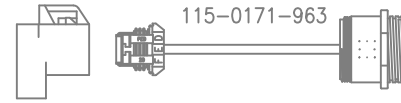
NOTE:

REFER TO DWG. 054-6000-001 FOR OTHER SYSTEM COMPONENTS.
PURCHASE ISOBUS HITCH TO RAVEN ECU CABLE SEPARATELY.

ISOBUS ACCUFLOW HP 6 SECTION BAR ELECTRONICS KIT
117-6300-002

TERMINATOR, ACTIVE, POWELL
063-0172-964

CABLE, RAVEN ISO TO ACTIVE TERMINATOR
115-0171-963

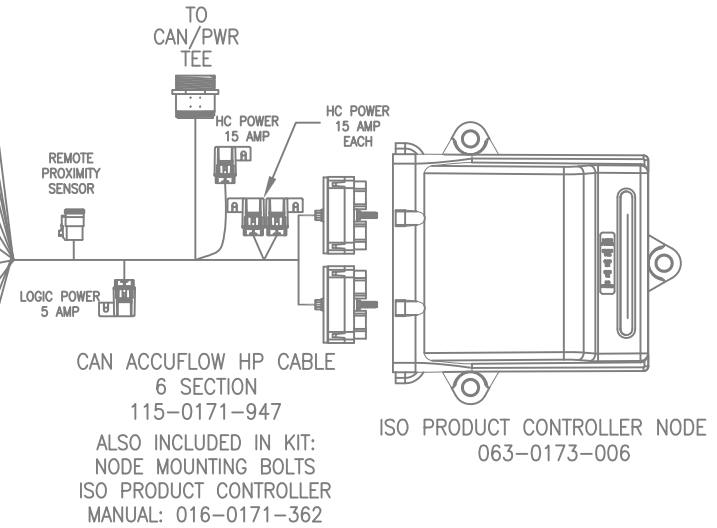


22' FOOT SWITCH EXT.
115-0171-865

FOOT SWITCH ISO NODE
063-0173-080



- NH3/PUMP PRESSURE
- BOOST PUMP
- FLOW METER
- SECTION 1
- SECTION 2
- SECTION 3
- SECTION 4
- SECTION 5
- SECTION 6
- CONTROL VALVE
- MASTER ON/OFF



CAN ACCUFLOW HP CABLE
6 SECTION
115-0171-947

ALSO INCLUDED IN KIT:
NODE MOUNTING BOLTS
ISO PRODUCT CONTROLLER
MANUAL: 016-0171-362

ISO PRODUCT CONTROLLER NODE
063-0173-006

Optional:

PROXIMITY SENSOR KIT
117-0171-298

PROX SENSOR EXTENSION
CABLE, 20'
115-0171-501

RELEASED DATE	ECO NO.	PROD. MGR.	SERV.	PROD. CHAMP.	ENG.	DRAFT.	REV.	DRAWING NO.
10/18/10	E16352	JAB	AT	TLH	DLF	MAP	A	054-6300-002
5/26/11	E17536	JAB	TAC	GLE	CRS	AJK2	B	054-6300-002