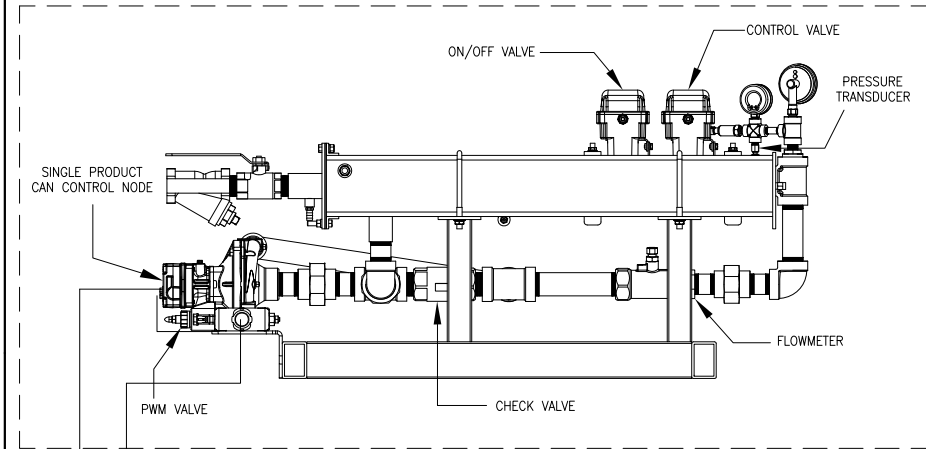


ISOBUS ACCUFLOW HP, 3 SECTION BAR

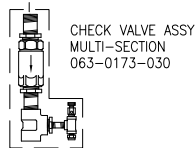
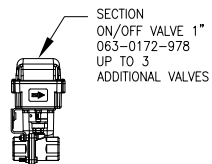
REFER TO SAFETY SECTION IN MANUAL

ISOBUS ACCUFLOW HP 3 SECTION BAR ELECTRONICS KIT
117-6300-001

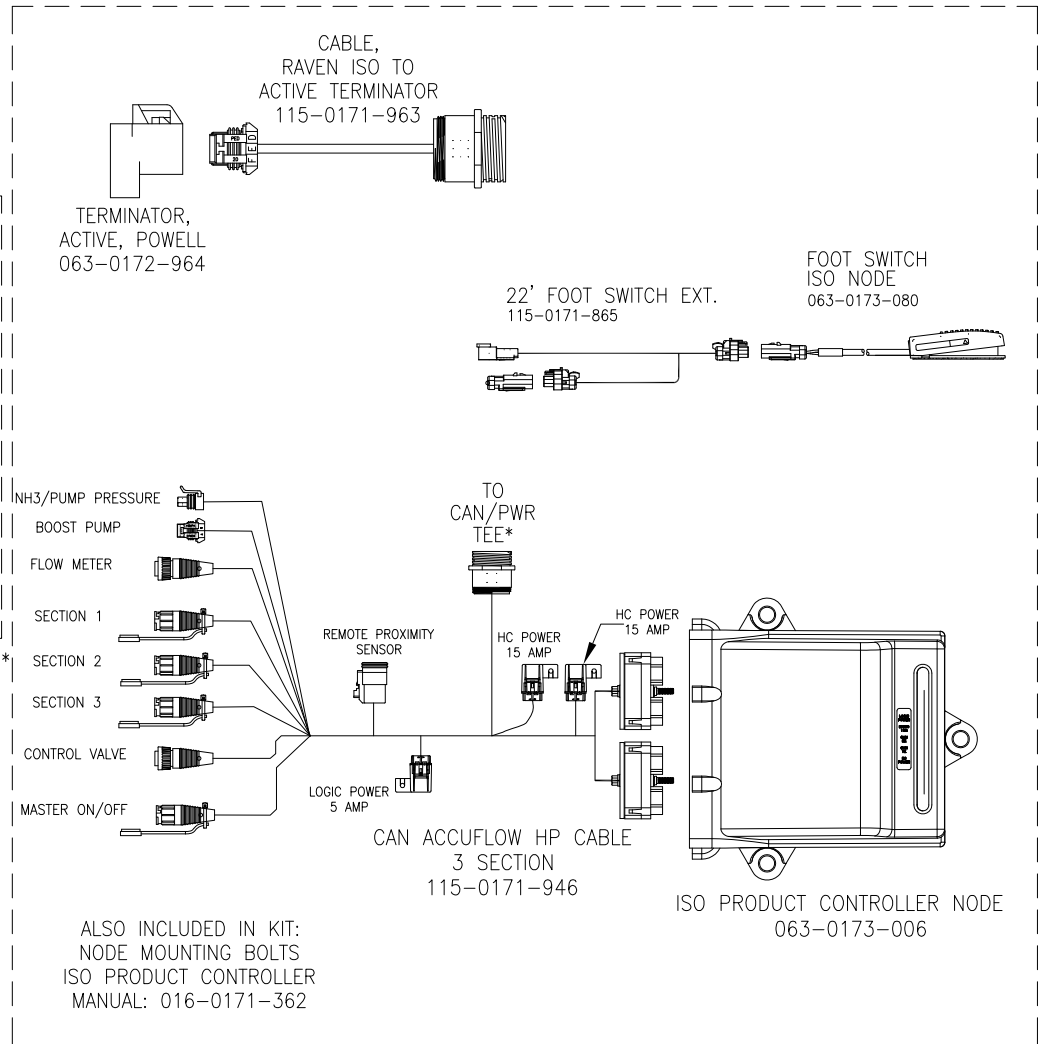


ACCUFLOW HP KIT **VAPOR TUBES SOLD SEPERATELY**
TWO VALVE: 117-0171-392 3/4"- 117-0171-409 (2 TUBE KIT)
FAST VALVE: 117-0171-393 1/2"- 117-0171-410 (4 TUBE KIT)

T P
TO TRACTOR HYDRAULICS



ON/OFF VALVE EXTENSION CABLES: (OPTIONAL)
6': 115-0171-832
12': 115-0171-833
24': 115-0171-834



ALSO INCLUDED IN KIT:
NODE MOUNTING BOLTS
ISO PRODUCT CONTROLLER
MANUAL: 016-0171-362

Optional:

PROXIMITY SENSOR KIT
117-0171-298

PROX SENSOR EXTENSION
CABLE, 20'
115-0171-501

NOTE:

REFER TO DWG. 054-6000-001 FOR OTHER SYSTEM COMPONENTS.
PURCHASE ISOBUS HITCH TO RAVEN ECU CABLE SEPARATELY.

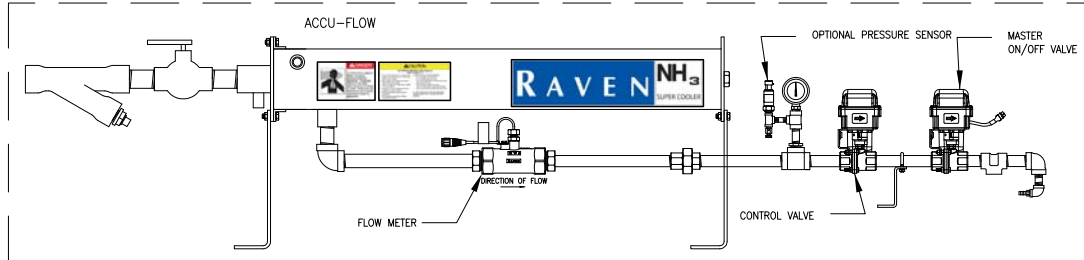
RELEASED DATE	ECO NO.	PROD. MGR.	SERV. MGR.	PROD. CHAMP.	ENG.	DRAFT.	REV.	DRAWING NO.
10/18/10	E16352	JAB	AT	TLH	DLF	MAP	A	054-6300-001
5/26/11	E17536	JAB	TAC	GLE	CRS	AJK2	B	054-6300-001

ACCUFLOW KIT, TWO VALVE
117-0171-384

-KIT INCLUDES SPACE SAVER KIT (SHOWN WITHOUT SPACE SAVER KIT)

ISOBUS ACCUFLOW, 3 SECTION BAR

REFER TO SAFETY
SECTION IN MANUAL

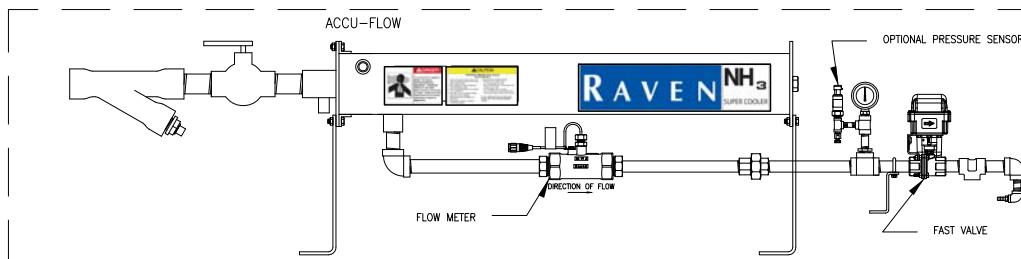


****VAPOR TUBES SOLD SEPARATELY****

3/4"- 117-0171-409 (2 TUBE KIT)
1/2"- 117-0171-410 (4 TUBE KIT)

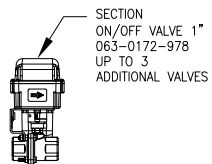
ACCUFLOW KIT, FAST VALVE
117-0171-386

-KIT INCLUDES SPACE SAVER KIT (SHOWN WITHOUT SPACE SAVER KIT)

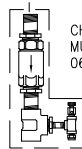


****VAPOR TUBES SOLD SEPARATELY****

3/4"- 117-0171-409 (2 TUBE KIT)
1/2"- 117-0171-410 (4 TUBE KIT)



SECTION
ON/OFF VALVE 1"
063-0172-978
UP TO 3
ADDITIONAL VALVES



CHECK VALVE ASSY
MULTI-SECTION
063-0173-030

Optional:

PROXIMITY SENSOR KIT
117-0171-298

PROX SENSOR EXTENSION
CABLE, 20'
115-0171-501

ON/OFF VALVE EXTENSION CABLES: (OPTIONAL)
6': 115-0171-832
12': 115-0171-833
24': 115-0171-834

NODE MOUNTING KIT (OPTIONAL): 117-0171-299

ISOBUS ACCUFLOW HP 3 SECTION BAR ELECTRONICS KIT

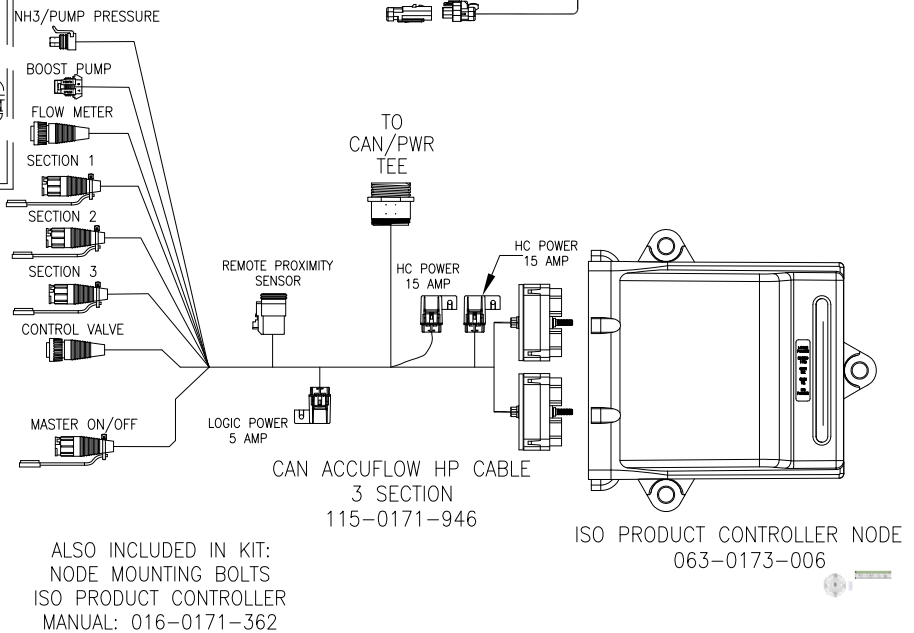
117-6300-001

CABLE,
RAVEN ISO TO
ACTIVE TERMINATOR
115-0171-963

TERMINATOR,
ACTIVE, POWELL
063-0172-964

22' FOOT SWITCH EXT.
115-0171-865

FOOT SWITCH
ISO NODE
063-0173-080



ALSO INCLUDED IN KIT:
NODE MOUNTING BOLTS
ISO PRODUCT CONTROLLER
MANUAL: 016-0171-362

ISO PRODUCT CONTROLLER NODE
063-0173-006

NOTE:

REFER TO DWG. 054-6000-001 FOR OTHER SYSTEM COMPONENTS.
PURCHASE ISOBUS HITCH TO RAVEN ECU CABLE SEPARATELY.

RELEASED DATE	ECO NO.	PROD. MGR.	SERV. MGR.	PROD. CHAMP.	ENG.	DRAFT.	REV.	DRAWING NO.
10/18/10	E16352	JAB	AT	TLH	DLF	MAP	A	054-6300-001
5/26/11	E17536	JAB	TAC	GLE	CRS	AJK2	B	054-6300-001