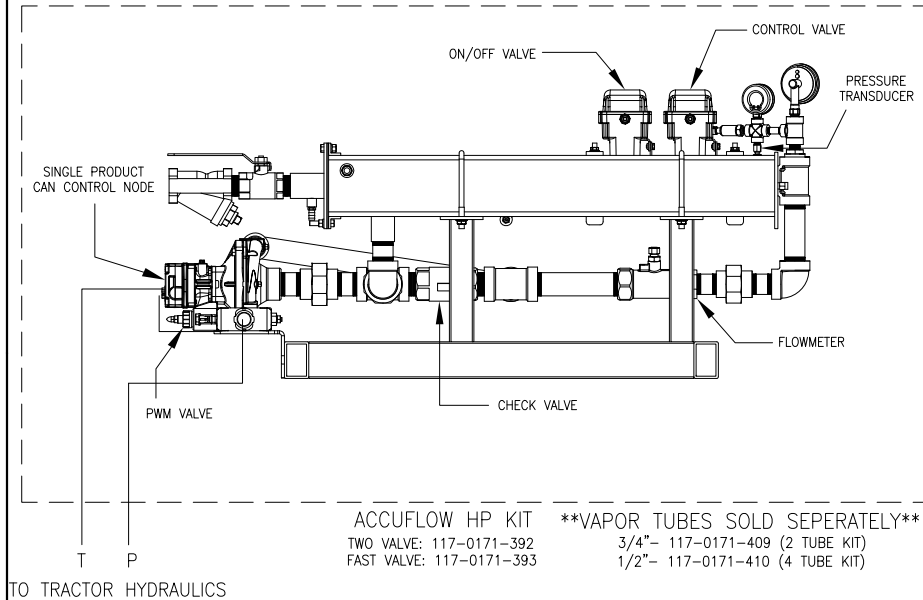
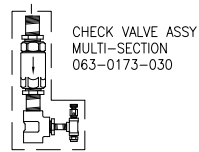
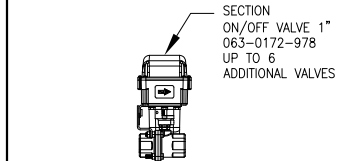
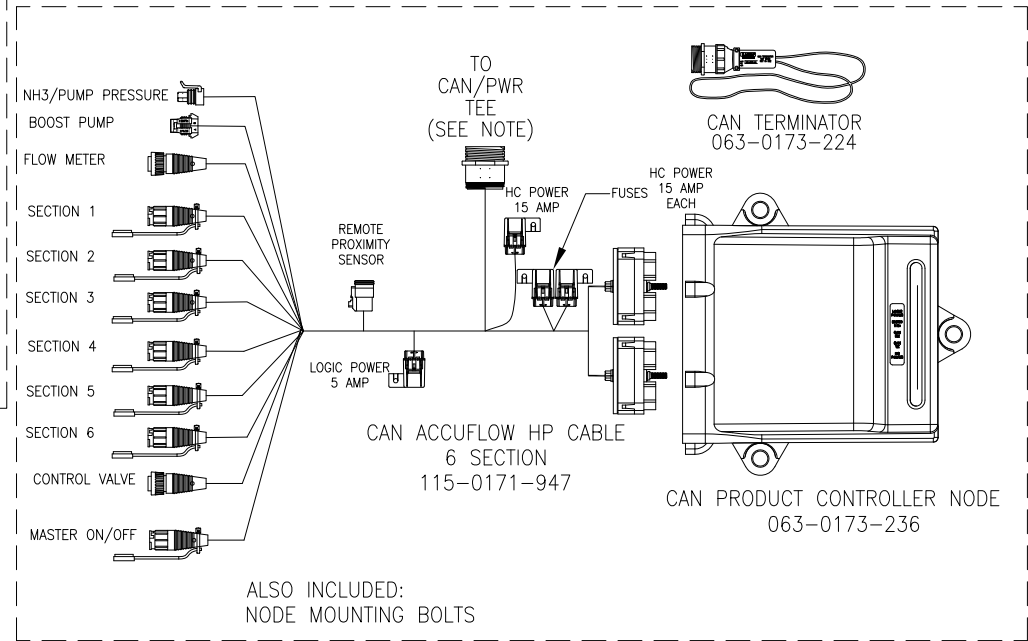


# CAN ACCUFLOW HP, 6 SECTION BAR

REFER TO SAFETY SECTION IN MANUAL



CAN ACCUFLOW HP 6 SECTION BAR ELECTRONICS KIT  
117-5300-002



ON/OFF VALVE EXTENSION CABLES: (OPTIONAL)  
 6': 115-0171-832  
 12': 115-0171-833  
 24': 115-0171-834

Optional:

PROXIMITY SENSOR KIT  
117-0171-298

PROX SENSOR EXTENSION  
CABLE, 20'  
115-0171-501

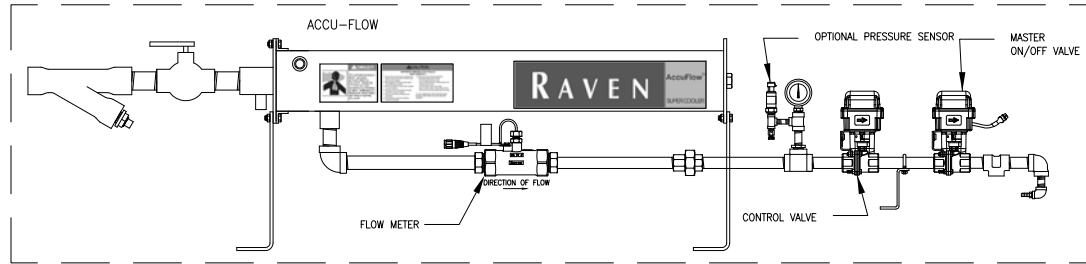
NOTE:

REFER TO DWG. 054-5000-001 FOR OTHER SYSTEM COMPONENTS.

| RELEASED DATE | ECO NO. | PROD. MGR. | SERV. MGR. | PROD. CHAMP. | ENG. | DRAFT. | REV. | DRAWING NO.  |
|---------------|---------|------------|------------|--------------|------|--------|------|--------------|
| 10/18/10      | E16352  | JAB        | AT         | GLE          | CRS  | MAP    | A    | 054-5300-002 |
| 5/26/11       | E17536  | JAB        | TAC        | GLE          | CRS  | AJK2   | B    | 054-5300-002 |

# CAN ACCUFLOW, 6 SECTION BAR

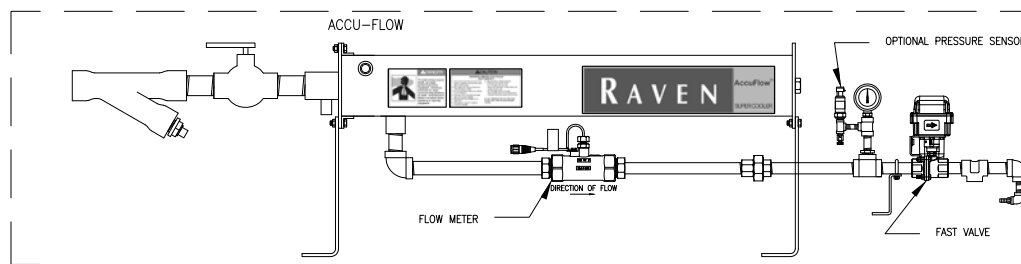
ACCUFLOW KIT, TWO VALVE  
117-0171-384 -KIT INCLUDES SPACE SAVER KIT (SHOWN WITHOUT SPACE SAVER KIT)



**\*\*VAPOR TUBES SOLD SEPERATELY\*\***

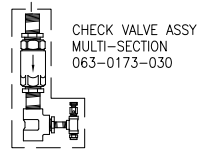
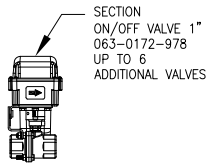
3/4"- 117-0171-409 (2 TUBE KIT)  
1/2"- 117-0171-410 (4 TUBE KIT)

ACCUFLOW KIT, FAST VALVE  
117-0171-386 -KIT INCLUDES SPACE SAVER KIT (SHOWN WITHOUT SPACE SAVER KIT)



**\*\*VAPOR TUBES SOLD SEPERATELY\*\***

3/4"- 117-0171-409 (2 TUBE KIT)  
1/2"- 117-0171-410 (4 TUBE KIT)



ON/OFF VALVE EXTENSION CABLES: (OPTIONAL)

6': 115-0171-832  
12': 115-0171-833  
24': 115-0171-834

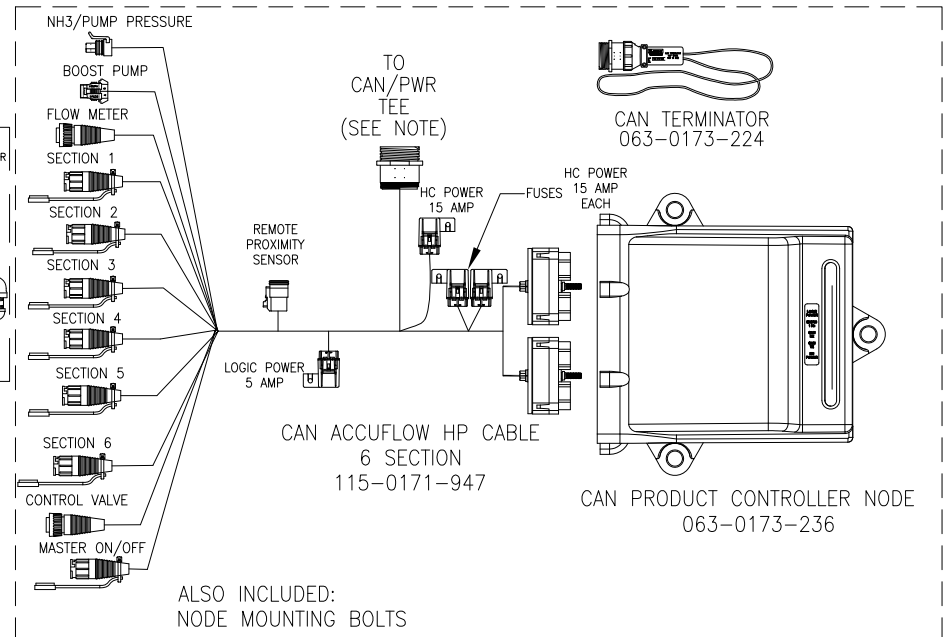
NODE MOUNTING KIT (OPTIONAL): 117-0171-299

**NOTE:**

REFER TO DWG. 054-5000-001 FOR OTHER SYSTEM COMPONENTS.

CAN ACCUFLOW HP 6 SECTION BAR ELECTRONICS KIT  
117-5300-002

REFER TO SAFETY  
SECTION IN MANUAL



**Optional:**

PROXIMITY SENSOR KIT  
117-0171-298

PROX SENSOR EXTENSION  
CABLE, 20'  
115-0171-501

| RELEASED DATE | ECO NO. | PROD. MGR. | SERV. MGR. | PROD. CHAMP. | ENG. | DRAFT. | REV. | DRAWING NO.  |
|---------------|---------|------------|------------|--------------|------|--------|------|--------------|
| 10/18/10      | E16352  | JAB        | AT         | GLE          | CRS  | MAP    | A    | 054-5300-002 |
| 5/26/11       | E17536  | JAB        | TAC        | GLE          | CRS  | AJK2   | B    | 054-5300-002 |