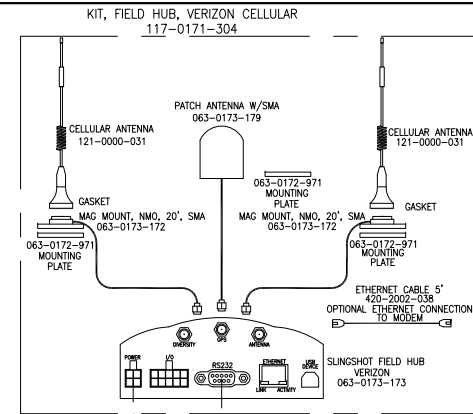


NOTES:

1. THE SOLE PURPOSE OF THIS DRAWING IS TO PROVIDE PROPER DOCUMENTATION FOR INSTALLATION PURPOSES ONLY AND DOES NOT NECESSARILY DEPICT ACCURATE KIT CONTENTS.
2. BATTERY POWER = CONNECT TO LIVE OR UNCLEAN SWITCHED POWER SOURCE.
3. SWITCHED POWER = CONNECT TO CLEAN SWITCHED POWER SOURCE.
4. ** INDICATES HAGIE PART NUMBER
5. SYSTEM WILL SUPPORT UP TO 3 SIDEKICK PRO INJECTION PUMPS

HAGIE MY2014 STS SYSTEM DRAWING – VIPER 4



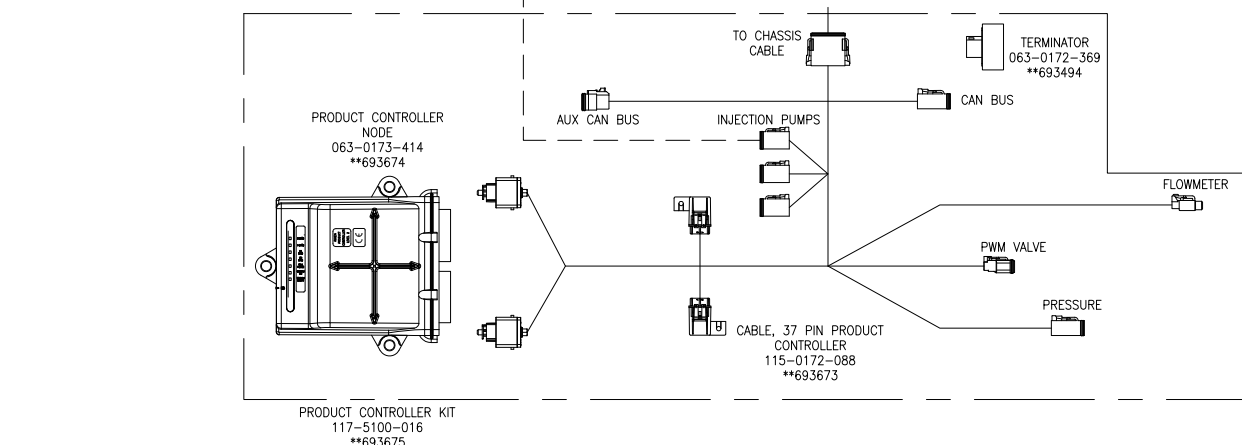
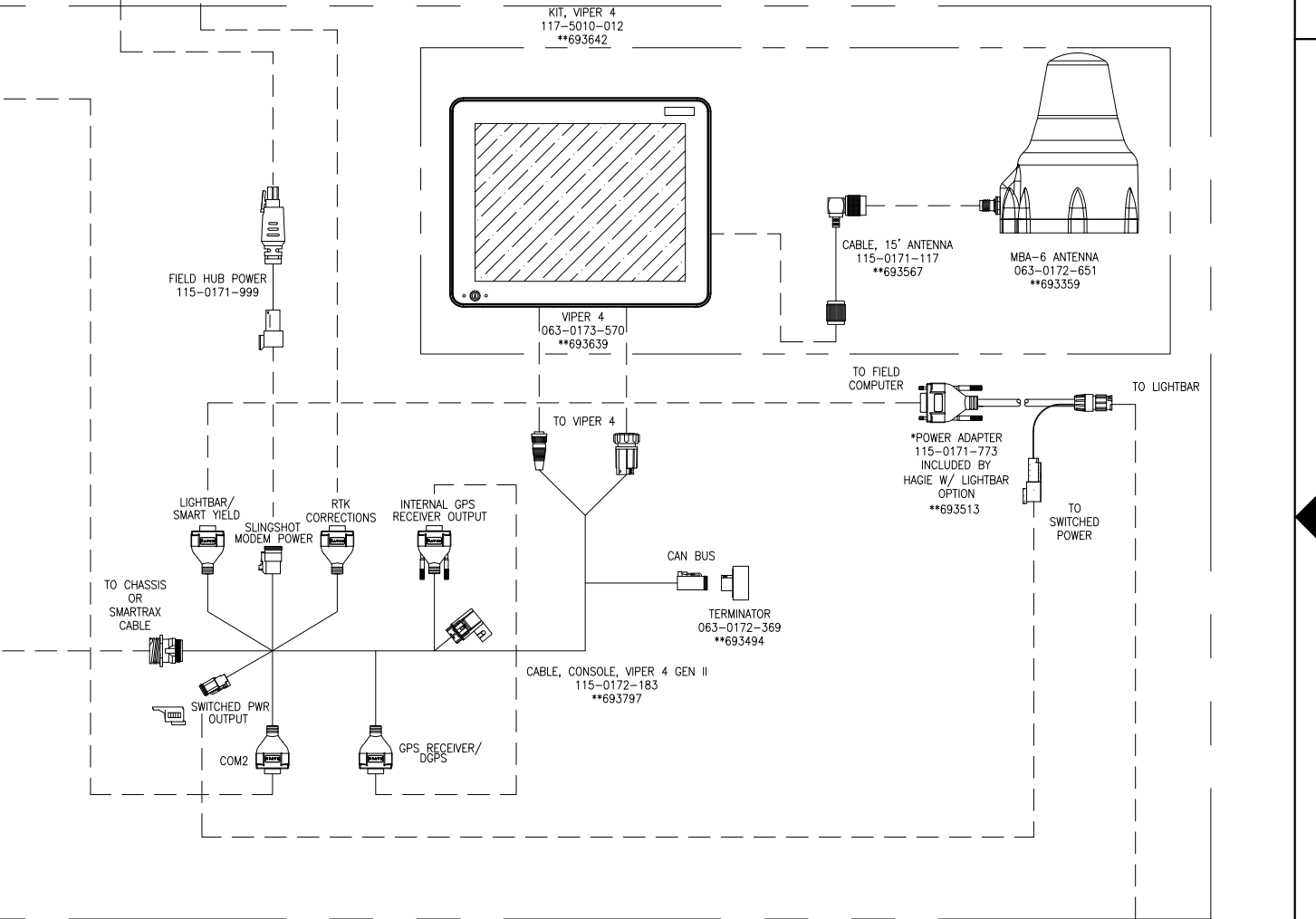
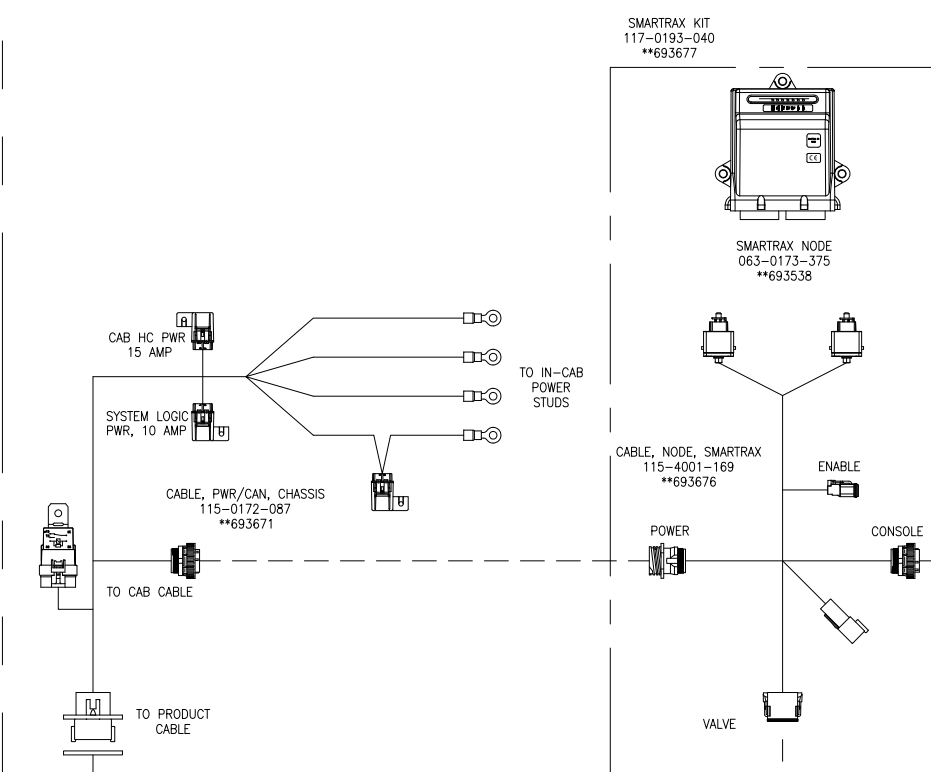
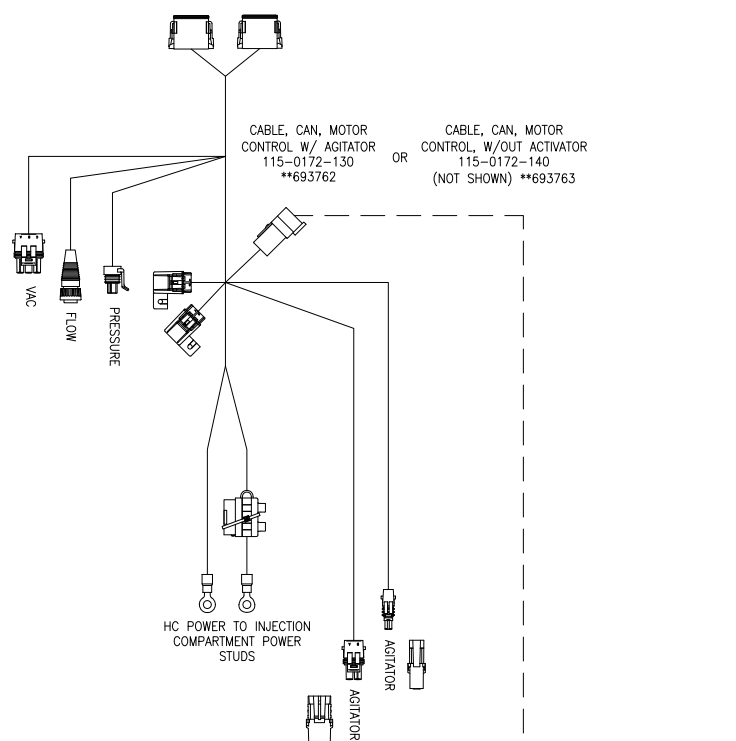
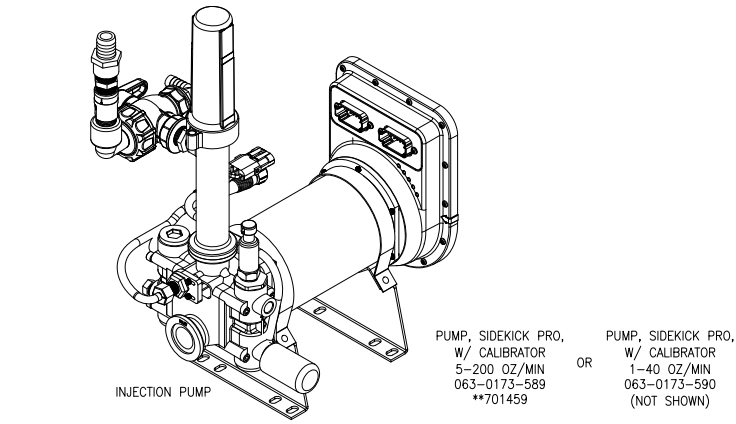
*077-0180-030
VIPER PRO
WEATHER MODULE
SOFTWARE KEY
NEEDED
**693424

WATCHDOG
WEATHER STATION KIT
(OPTIONAL)
117-0171-138*
**693423

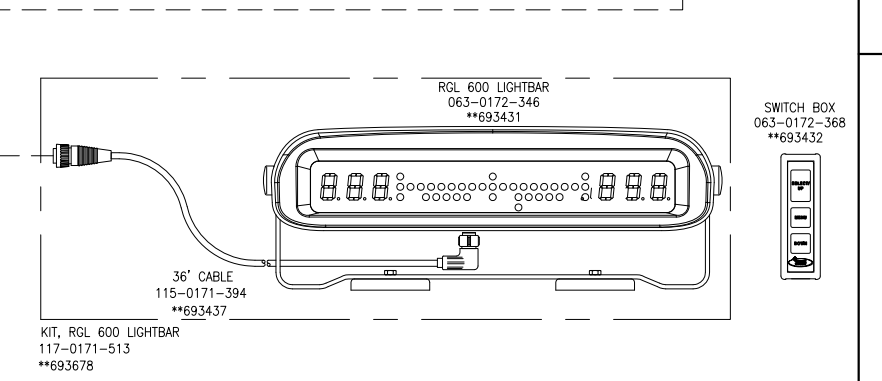
KIT, CAB CABLE, HAGIE STS
117-5100-016
**693672

INSIDE CAB

KIT, VIPER 4
117-5010-012
**693642



HAGIE VALVE



RELEASED DATE	ECO NO.	PROD. MGR.	SERV.	PROD. CHAMP.	ENG.	DRAFT.	REV.	DRAWING NO.
9/17/13	E20054	GLE	AT	N/A	TLB3	JJP	A	054-3002-013