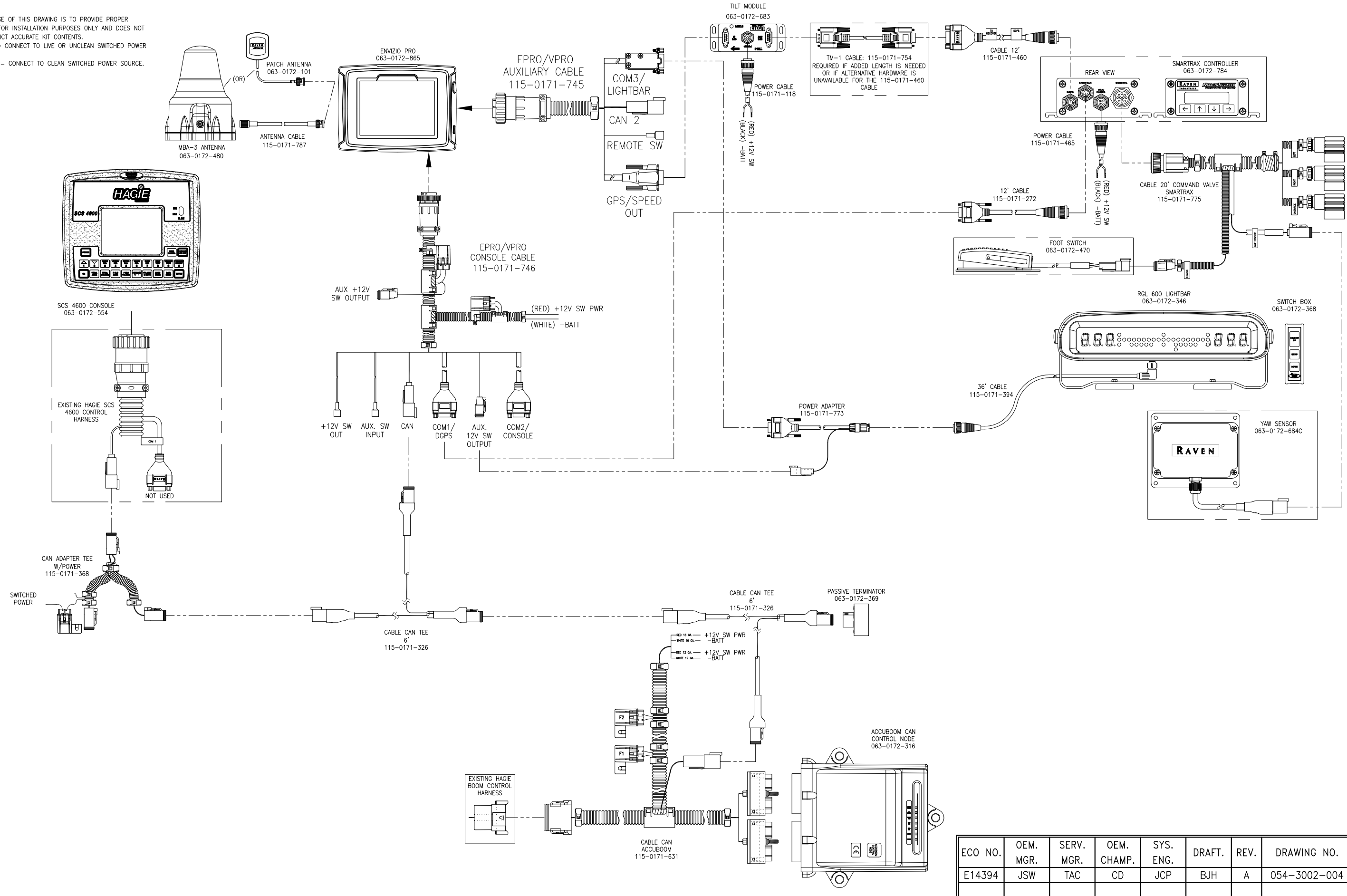


ENVIZIO PRO W/INTERNAL GPS/SCS 4600, SMARTRAX, TM-1 AND EXTERNAL LIGHTBAR,
HAGIE STS

NOTES:

1. THE SOLE PURPOSE OF THIS DRAWING IS TO PROVIDE PROPER DOCUMENTATION FOR INSTALLATION PURPOSES ONLY AND DOES NOT NECESSARILY DEPICT ACCURATE KIT CONTENTS.
2. BATTERY POWER = CONNECT TO LIVE OR UNCLEAN SWITCHED POWER SOURCE.
3. SWITCHED POWER = CONNECT TO CLEAN SWITCHED POWER SOURCE.



ECO NO.	OEM. MGR.	SERV. MGR.	OEM. CHAMP.	SYS. ENG.	DRAFT.	REV.	DRAWING NO.
E14394	JSW	TAC	CD	JCP	BJH	A	054-3002-004