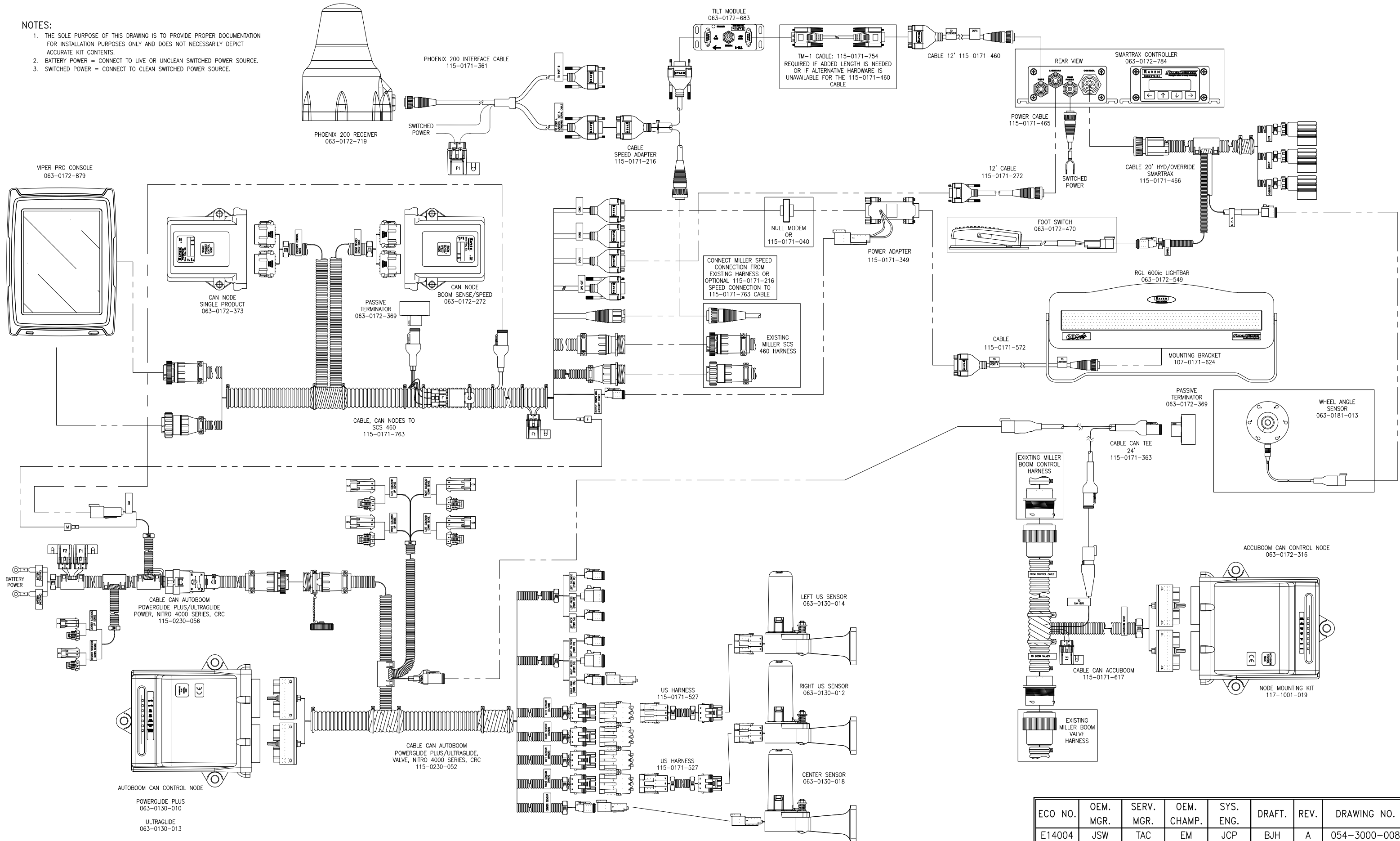


VIPER PRO WITH GPS, SMARTRAX, TM-1 AND IN CAB LIGHTBAR,
MILLER NITRO 4000 SERIES

- NOTES:
1. THE SOLE PURPOSE OF THIS DRAWING IS TO PROVIDE PROPER DOCUMENTATION FOR INSTALLATION PURPOSES ONLY AND DOES NOT NECESSARILY DEPICT ACCURATE KIT CONTENTS.
 2. BATTERY POWER = CONNECT TO LIVE OR UNCLEAN SWITCHED POWER SOURCE.
 3. SWITCHED POWER = CONNECT TO CLEAN SWITCHED POWER SOURCE.



ECO NO.	OEM. MGR.	SERV. MGR.	OEM. CHAMP.	SYS. ENG.	DRAFT.	REV.	DRAWING NO.
E14004	JSW	TAC	EM	JCP	BJH	A	054-3000-008
E15558	JSW	TAC	DCS	JCP	MAP	B	-