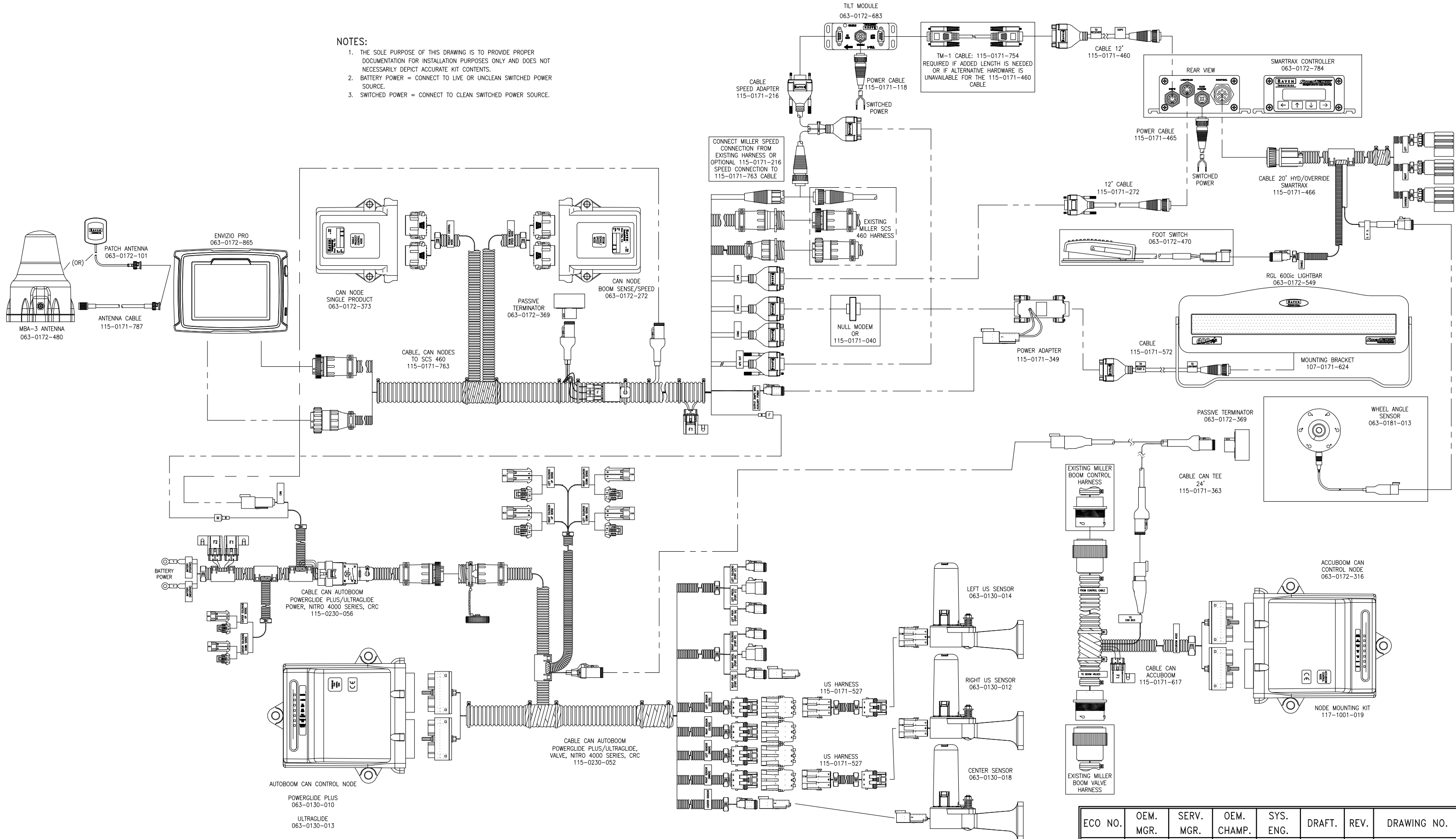


ENVIZIO PRO WITH INTERNAL GPS, SMARTRAX, TM-1 AND IN CAB LIGHTBAR,  
MILLER NITRO 4000 SERIES

NOTES:

1. THE SOLE PURPOSE OF THIS DRAWING IS TO PROVIDE PROPER DOCUMENTATION FOR INSTALLATION PURPOSES ONLY AND DOES NOT NECESSARILY DEPICT ACCURATE KIT CONTENTS.
2. BATTERY POWER = CONNECT TO LIVE OR UNCLEAN SWITCHED POWER SOURCE.
3. SWITCHED POWER = CONNECT TO CLEAN SWITCHED POWER SOURCE.



ECO NO.	OEM. MGR.	SERV. MGR.	OEM. CHAMP.	SYS. ENG.	DRAFT.	REV.	DRAWING NO.
E14004	JSW	TAC	EM	JCP	BJH	A	054-3000-007
E15558	JSW	TAC	DCS	JCP	MAP	B	-