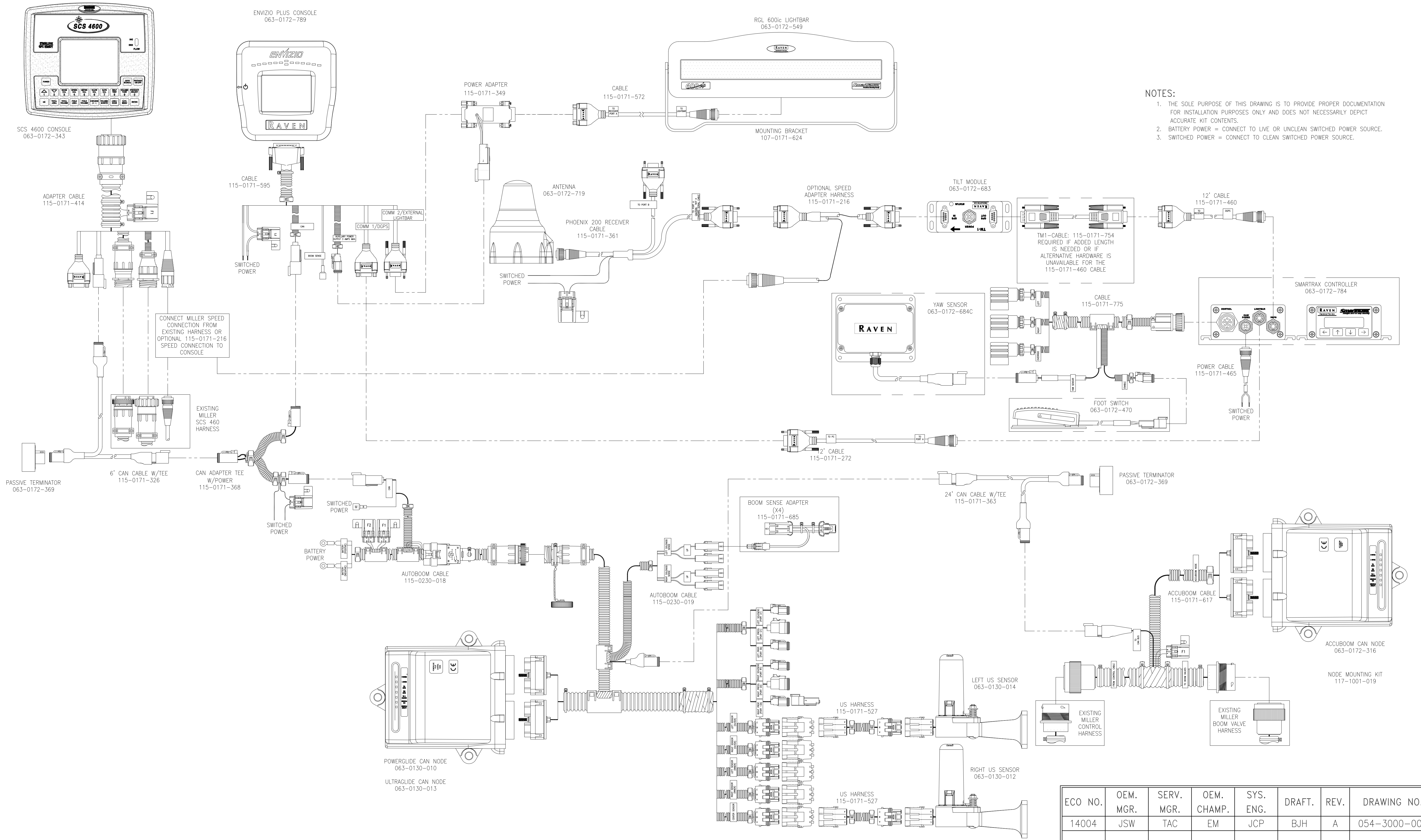


ENVIZIO PLUS, SCS 4600, PHOENIX 200, TM-1, SMARTRAX AND IN CAB LIGHTBAR, MILLER NITRO



- NOTES:**
1. THE SOLE PURPOSE OF THIS DRAWING IS TO PROVIDE PROPER DOCUMENTATION FOR INSTALLATION PURPOSES ONLY AND DOES NOT NECESSARILY DEPICT ACCURATE KIT CONTENTS.
 2. BATTERY POWER = CONNECT TO LIVE OR UNCLEAN SWITCHED POWER SOURCE.
 3. SWITCHED POWER = CONNECT TO CLEAN SWITCHED POWER SOURCE.

ECO NO.	OEM. MGR.	SERV. MGR.	OEM. CHAMP.	SYS. ENG.	DRAFT.	REV.	DRAWING NO.
14004	JSW	TAC	EM	JCP	BJH	A	054-3000-006