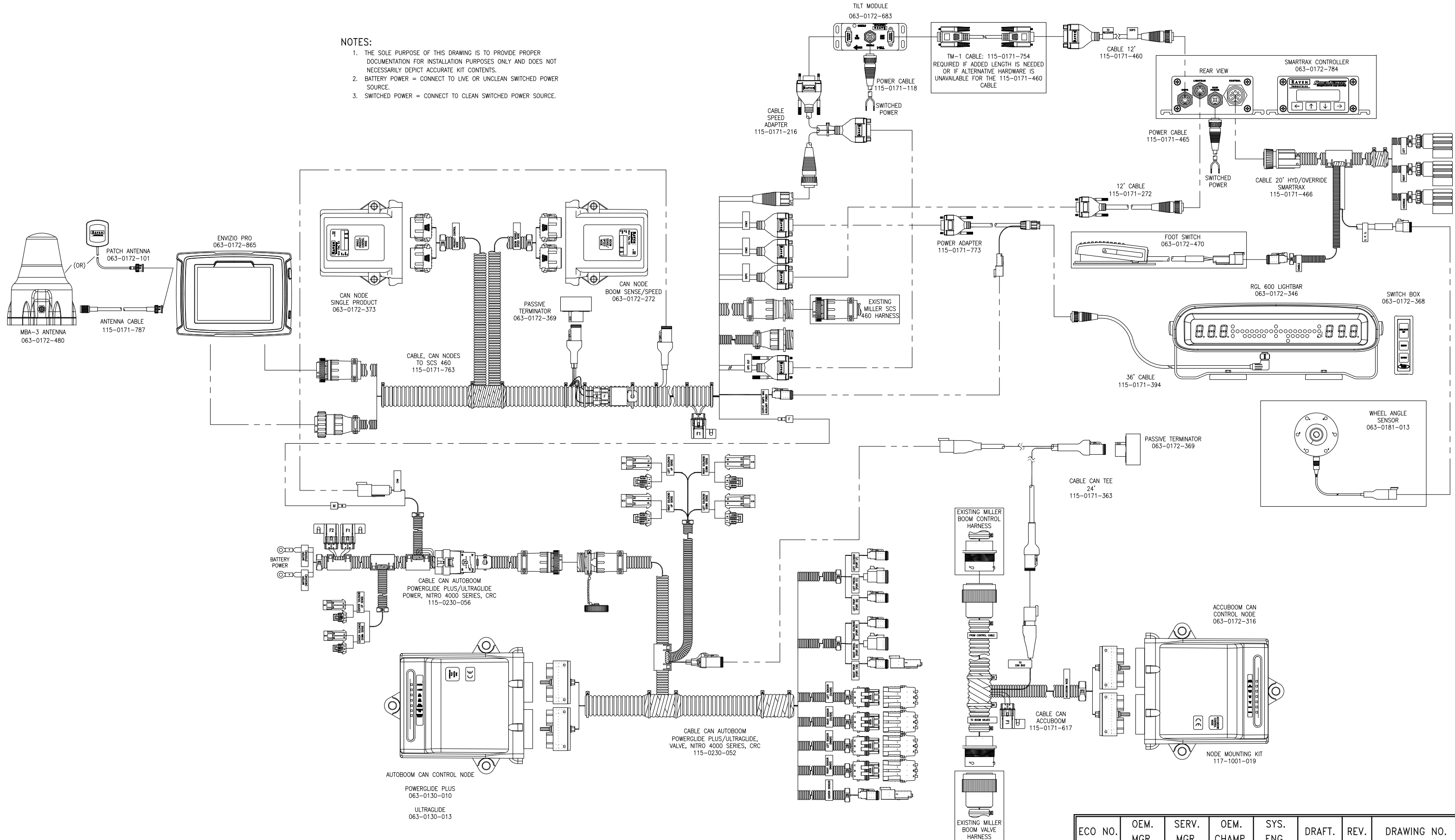


ENVIZIO PRO WITH INTERNAL GPS, SMARTRAX, TM-1 AND EXTERNAL LIGHTBAR,
MILLER NITRO 4000 SERIES

NOTES:

1. THE SOLE PURPOSE OF THIS DRAWING IS TO PROVIDE PROPER DOCUMENTATION FOR INSTALLATION PURPOSES ONLY AND DOES NOT NECESSARILY DEPICT ACCURATE KIT CONTENTS.
2. BATTERY POWER = CONNECT TO LIVE OR UNCLEAN SWITCHED POWER SOURCE.
3. SWITCHED POWER = CONNECT TO CLEAN SWITCHED POWER SOURCE.



ECO NO.	OEM. MGR.	SERV. MGR.	OEM. CHAMP.	SYS. ENG.	DRAFT.	REV.	DRAWING NO.
E13665	JSW	TAC	EM	JCP	BJH		054-3000-003
E15558	JSW	TAC	DCS	JCP	MAP	A	-