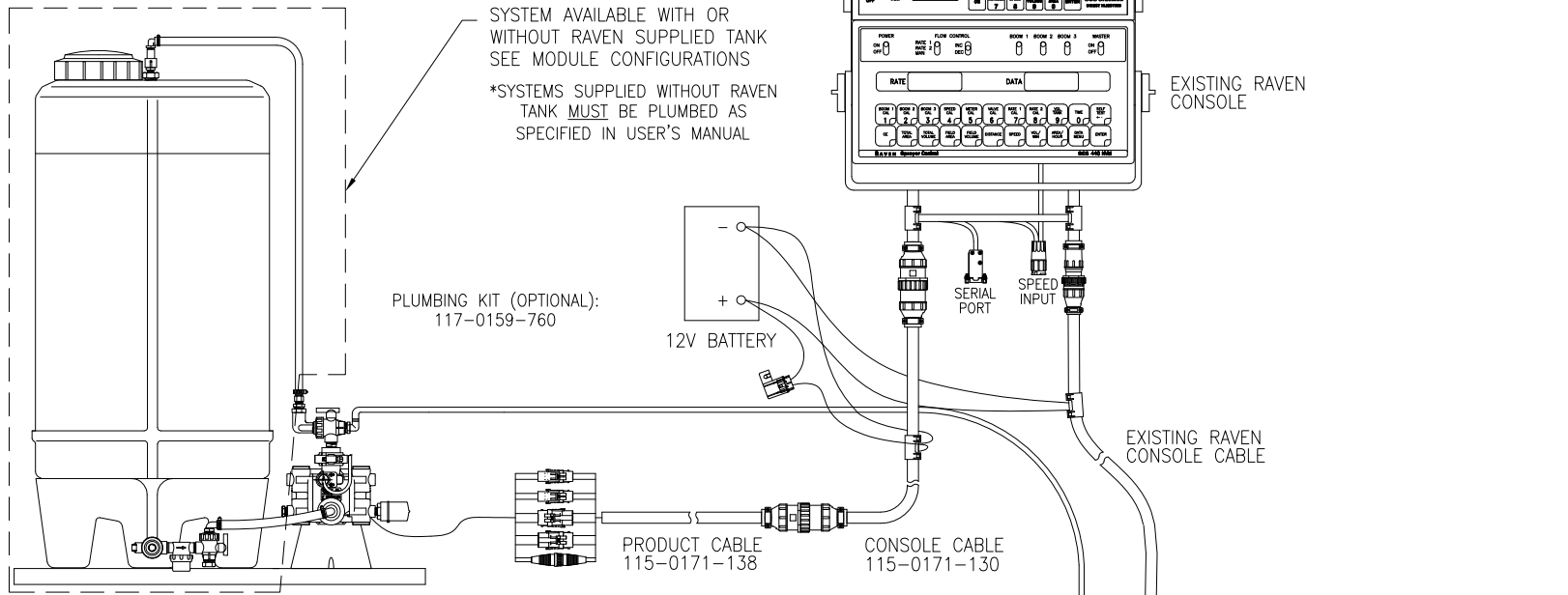


SCS SIDEKICK INJECTION SYSTEM

INJECTION MODULE CONFIGURATIONS:
 HIGH VOLUME WITH TANK: 117-0159-915
 LOW VOLUME WITH TANK: 117-0159-976
 HIGH VOLUME WITHOUT TANK: 117-0159-916
 LOW VOLUME WITHOUT TANK: 117-0159-975

SCS-SIDEKICK
 063-0171-964



SYSTEM AVAILABLE WITH OR WITHOUT RAVEN SUPPLIED TANK SEE MODULE CONFIGURATIONS

*SYSTEMS SUPPLIED WITHOUT RAVEN TANK MUST BE PLUMBED AS SPECIFIED IN USER'S MANUAL

PLUMBING KIT (OPTIONAL):
 117-0159-760

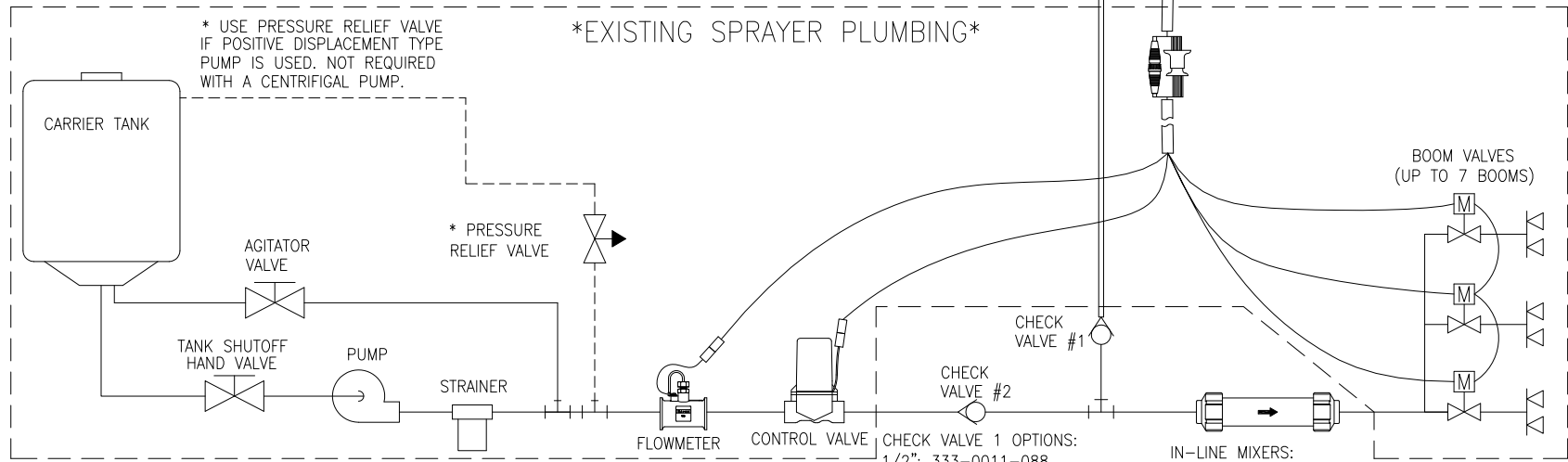
12V BATTERY

EXISTING RAVEN CONSOLE

EXISTING RAVEN CONSOLE CABLE

PRODUCT CABLE
 115-0171-138

CONSOLE CABLE
 115-0171-130



* USE PRESSURE RELIEF VALVE IF POSITIVE DISPLACEMENT TYPE PUMP IS USED. NOT REQUIRED WITH A CENTRIFUGAL PUMP.

EXISTING SPRAYER PLUMBING

* PRESSURE RELIEF VALVE

BOOM VALVES
 (UP TO 7 BOOMS)

CHECK VALVE #1

CHECK VALVE #2

CHECK VALVE 1 OPTIONS:
 1/2": 333-0011-088
 3/8": 333-0011-078 (N-SERV)

CHECK VALVE 2 OPTIONS:
 1": 333-0011-090
 1 1/4": 333-0011-091
 2": 333-0011-093

IN-LINE MIXERS:
 1": 063-0171-303
 1 1/4": 063-0159-632
 2": 063-0171-300
 3" S.S.: 333-9000-010

ECO NO.	PROD. MGR.	SERV. MGR.	PROD. CHAMP.	ENG.	DRAFT.	REV.	DRAWING NO.
E13232	JB	TAC	CJA	LAA1	MAP	A	054-2850-002