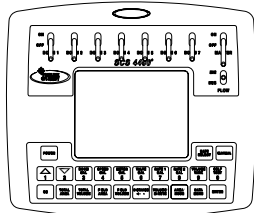


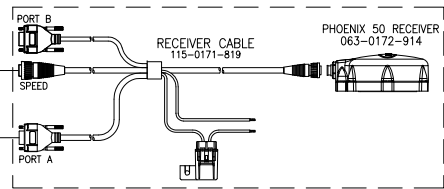
SCS 4400 TO SCS 440/450 CABLED SYSTEMS WITH SIDEKICK PRO INJECTION

COMPACT FLASH CARD (256 MB):
524-0002-046

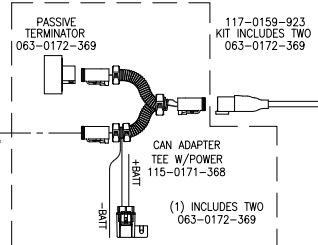


CONTROL CONSOLE
SCS 4400: 063-0172-281

PHOENIX 50 KIT
117-0171-164



SCS 4400 TO SCS 440 SYSTEM
ADAPTOR CABLE
115-0171-414



PASSIVE TERMINATOR
063-0172-369

117-0159-923
KIT INCLUDES TWO
063-0172-369

CAN ADAPTER
TEE W/POWER
115-0171-368
(1) INCLUDES TWO
063-0172-369

CAN CABLE WITH TEE
4: 115-0171-364
6: 115-0171-326
12: 115-0171-362
24: 115-0171-363

PRESSURE SENSOR
CABLES
6: 115-0171-235
12: 115-0171-151
37: 115-0171-224
44: 115-0171-296

PRESSURE SENSOR
CABLES
10: 115-0171-152
3: 115-0171-153
30: 115-0171-176

CONSOLE CABLE
10: 115-0171-085

TO AUX. POWER

RADAR POWER
CABLE
12: 115-0159-539

-BATT
+BATT

REMOTE SW
AUX. POWER

SPEED EXTENSION CABLES
10: 115-0171-262
12: 115-0159-032
18: 115-0171-239
24: 115-0159-018
29: 115-0171-241
34: 115-0171-225

PRESSURE SENSOR
422-0000-090

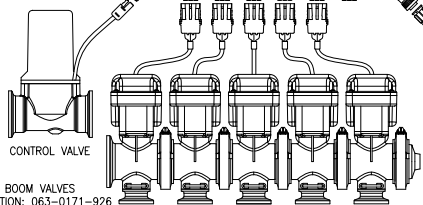
EXTENSION CABLES
12: 115-0159-856
24: 115-0159-857

SPEED SENSORS
RADAR (RADAR ONLY): 063-0172-143
RADAR (KIT WITH POWER CABLE): 117-0159-822

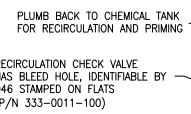
** WIDE VARIETY OF WHEEL DRIVE, SPEEDOMETER
AND RADAR ADAPTER CABLING. CONSULT RAVEN
SALES REPRESENTATIVE FOR PART NUMBERS **

FLOW CABLES
6: 115-0171-086
12: 115-0171-129

FLOW EXTENSION
CABLES
6: 115-0159-016*
12: 115-0159-017*
24: 115-0159-019*
36.5: 115-0171-544*



BOOM VALVES
1 SECTION: 063-0171-926
3 SECTION: 063-0171-928
5 SECTION: 063-0172-039

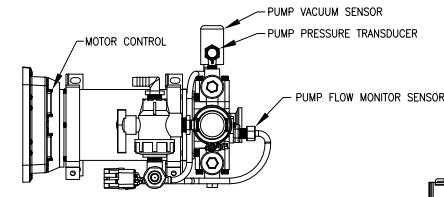


REIRCULATION CHECK VALVE
HAS BLEED HOLE, IDENTIFIABLE BY
046 STAMPED ON FLATS
(P/N 333-0011-100)

INJECTION PUMP CALIBRATOR
(P/N 063-0172-822)

PUMP FLOW MONITOR SENSOR
(P/N 063-0171-979)

* CAN ALSO BE USED FOR
PRESSURE SENSOR EXTENSIONS



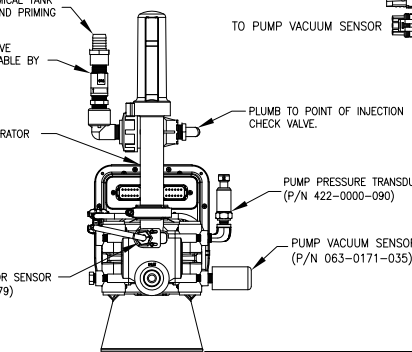
PUMP VACUUM SENSOR
PUMP PRESSURE TRANSDUCER
PUMP FLOW MONITOR SENSOR

TO MOTOR CONTROL

TO PUMP PRESSURE TRANSDUCER

TO PUMP FLOW MONITOR SENSOR

TO PUMP VACUUM SENSOR



PUMP PRESSURE TRANSDUCER
(P/N 422-0000-090)

PUMP VACUUM SENSOR
(P/N 063-0171-035)

PUMP FLOW MONITOR SENSOR
(P/N 063-0171-979)

AVAILABLE INJECTION PUMP ASSEMBLIES

- 5 - 200 OZ/MIN. INJECTION PUMP WITHOUT TANK P/N 063-0173-200
- 1 - 40 OZ/MIN. INJECTION PUMP WITHOUT TANK P/N 063-0173-201
- 1 - 40 OZ/MIN. INJECTION PUMP WITH 24 GAL TANK P/N 063-0173-212
- 5 - 200 OZ/MIN. INJECTION PUMP WITH 24 GAL. TANK P/N 063-0173-213

RELEASED DATE	ECO NO.	PROD. MGR.	SERV. MGR.	PROD. CHAMP.	ENG.	DRAFT.	REV.	DRAWING NO.
8/24/10	E16498	JAB	TAC	GLE	NAP	AJK2	A	054-2840-010