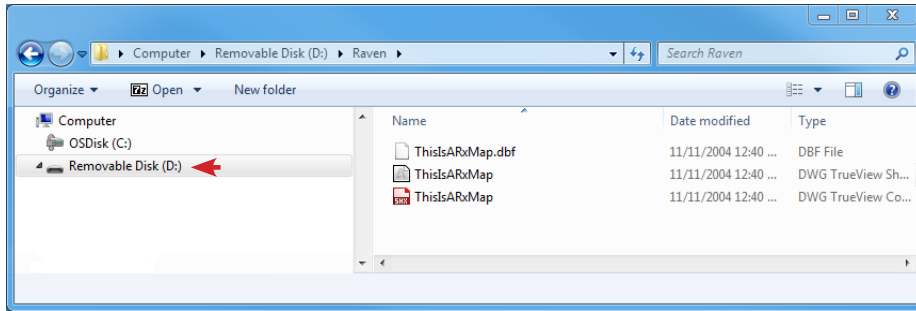


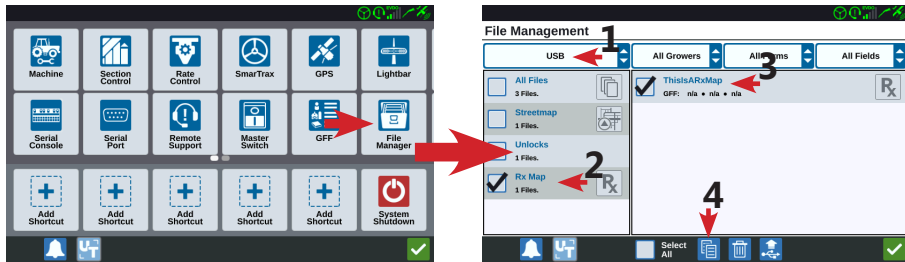
PRESCRIPTION MAP FILES LOCATION (USB)

The prescription/variable rate map files (.shp, .shx, and .dbf) must be copied to the root directory of your USB drive.



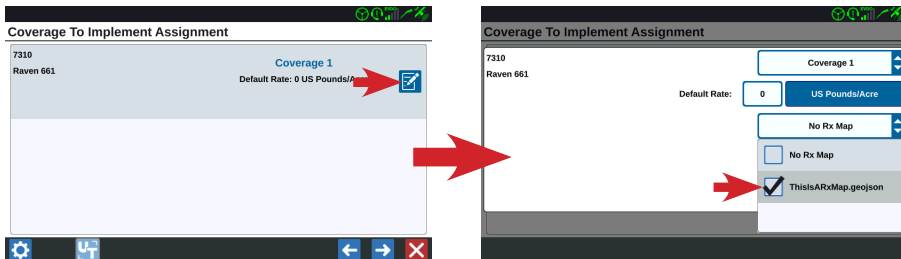
LOAD A PRESCRIPTION MAP

Insert your USB drive into your CR7™ and select the **File Manager** button from the settings options. Select **USB** as your source, then **Rx Map**, and then your prescription/variable rate map or maps. Select the **Copy** button.



ASSIGN A PRESCRIPTION MAP

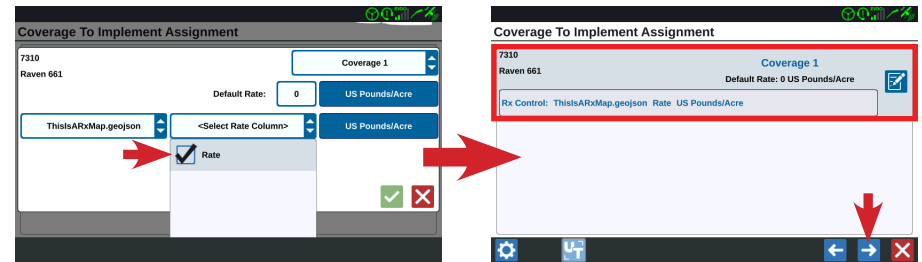
Start a job and enter your job details. When on the **Coverage To Implement Assignment** page, select the **Edit** button. Select the prescription map you want to use. If you are doing a multi-product application then all your active products will be listed. Just select the **Edit** button for the product(s) you want to assign your prescription map(s) to.



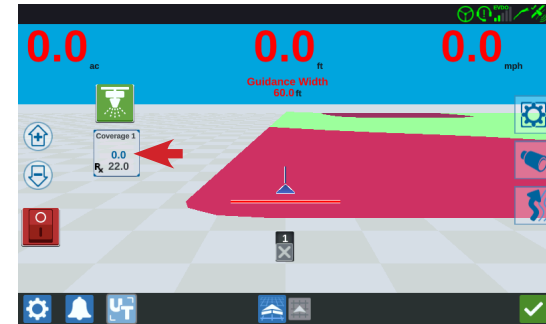
CR7™ VARIABLE RATE APPLICATION

ASSIGN A PRESCRIPTION MAP CONTINUED

Next, select the rate column of your prescription map (from your .dbf file). Verify all your job details are correct and then select the **Next** button to start your job.



Your **Product Rate** widget will indicate that your rate is based on the data in the particular zone you are in.



PRESCRIPTION MAP LOOK AHEAD SETTING

You can make rate response changes when traveling between different prescription zones. The **Look Ahead** setting scans the upcoming zone and begins adjusting your control valve position for the next rate change. In settings, select the **Rate Control** button and then set your **Look Ahead** value in seconds.

