

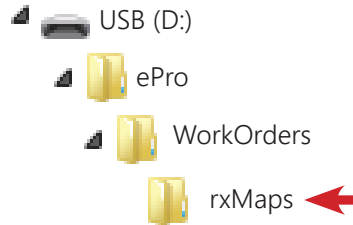
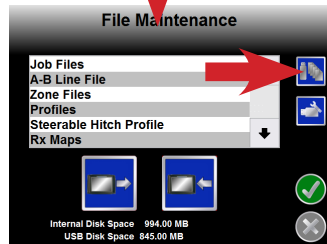
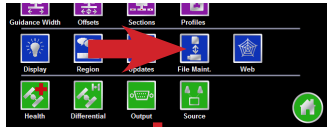
COPY VARIABLE RATE MAP FILES TO USB

Variable rate maps must be in the shape file format. Each map will have 3 essential files (.shp, .shx and .dbf) that SHOULD NOT be zipped/compressed together.

Insert a USB drive into the Envizio Pro and select the **Tools, File Maint.** buttons.



Select the **Initialize External USB Drive** button to automatically create the necessary folders to load a variable rate map into memory. Copy all three files for each variable rate map to the **ePro, WorkOrders, rxMaps** folder that was just created on the USB drive.



Copy the .shp, .shx, and .dbf files for each variable rate map to this folder.

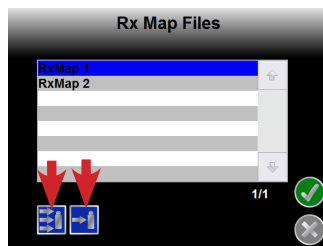
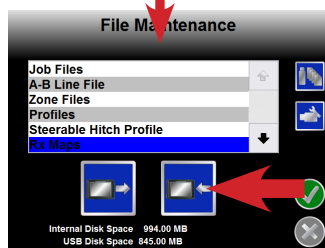
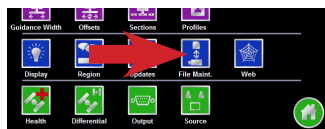
No subfolders allowed!

LOAD VARIABLE RATE MAP

Insert the USB drive, select the **Tools** button and then the **File Maint.** button.



Select **Rx Maps** and then the **Import** button. Select the variable rate map to import then select the **Single File** button or the **All Files** button. *If Rx Maps is not available as a selection then the Envizio Pro will need to be unlocked for variable rate capability.*



Single File



All Files

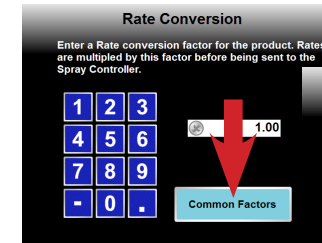
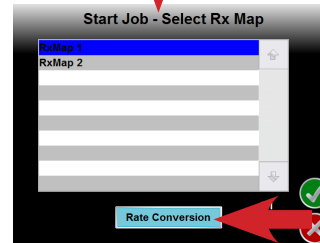
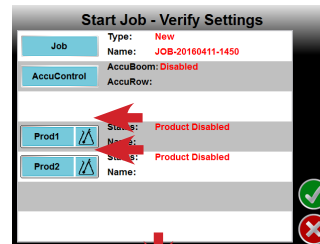
VARIABLE RATE MAP SELECTION & SET UP

Select the **Start Job** button then the **Variable Rate** button next to the **Product**

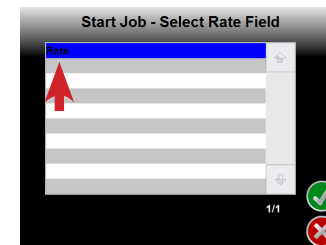


button to be variable rated. Select the variable rate map. Raven equipment only applies in units of gallons, ounces, liters, pounds, and kilograms. If the variable rate map units are different from these then select the

Rate Conversion button to figure a new conversion factor. The default value is 1. Select the **Common Factors** button for guidance on commonly used conversions. The table is determined by the unit to be applied and then the unit the variable rate map is using. If everything is correct then select the **Okay** button. Select the **Rate Field** from the .dbf file then select the **Okay** button to finish setup.



Common Conversion Factors			
Liquid Conversions			
A	B	A to B	B to A
L	gal	3.79	.06380
oz	gal	128	.00781
Dry Conversions			
A	B	A to B	B to A
lbs	kg	2.20	.45450
oz	lbs	16.0	.06250
lbs	tons	2000	.00050



Since the conversion factor is a multiplier of the rate in the .dbf file, this rate can also be adjusted for volume. If a factor of .5 was entered then all the rates in the variable rate map would be halved, for example.

LOAD A VRA MAP