

## JOB SCREEN



|  |                         |  |                         |
|--|-------------------------|--|-------------------------|
|  | zoom in                 |  | down field/field review |
|  | zoom out                |  | end job                 |
|  | settings                |  | configure widgets       |
|  | alarms                  |  | scout features          |
|  | universal terminal (UT) |  | guidance lines          |

## CHOOSE A GUIDANCE LINE

Select the **Guidance Lines** button. The current selection will be highlighted in red lettering and the **Guidance Lines** button will match the type of line selected.



another example



## CR7™ GUIDANCE LINES

## STRAIGHT AB

Select *Straight AB* and then the **Set A** button. The **Guidance Lines** button will blink indicating you are recording and you will see your projected line on the screen.

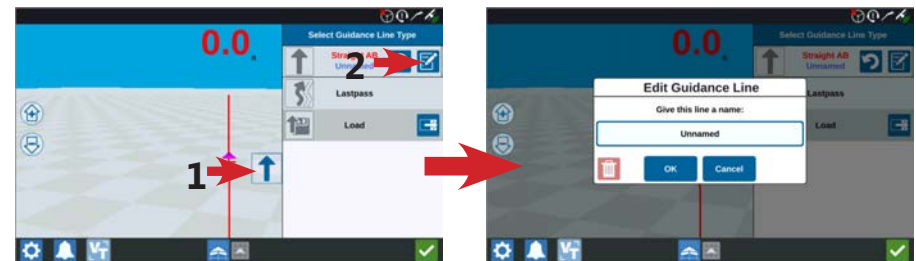


When ready, select the **Set B** button.



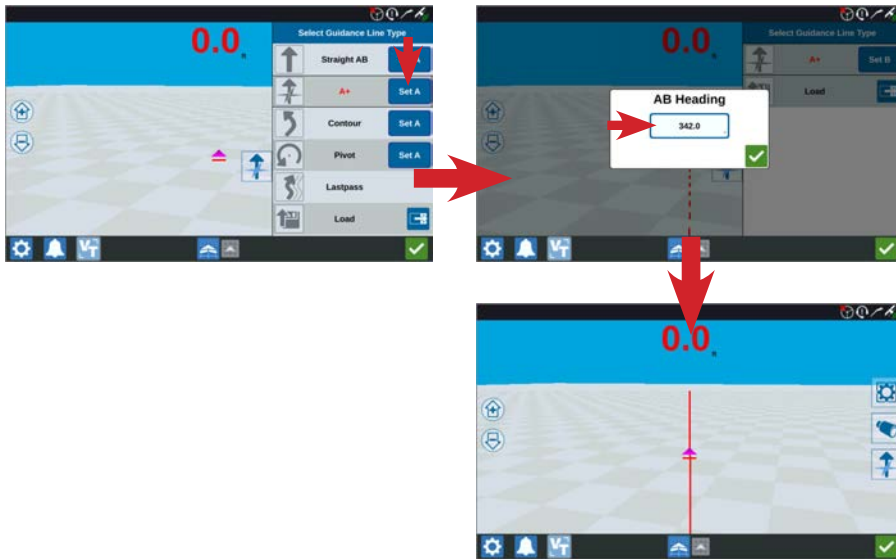
## NAME A STRAIGHT AB LINE

Select the **Guidance Lines** button and then the **Edit** button. Select the *Give this line a name* box and type in your desired name for your guidance line.



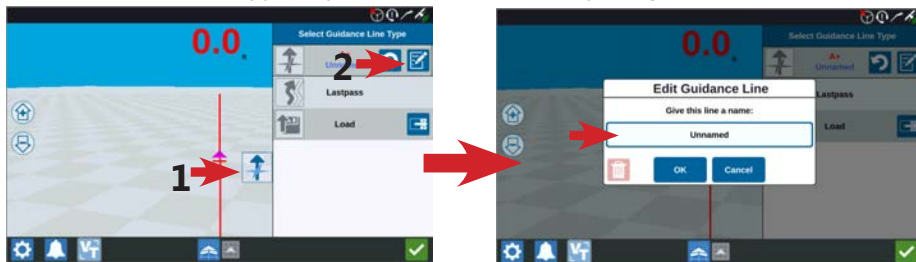
## A+ (COMPASS HEADING)

Select **A+** and then the **Set A** button. Select the *AB Heading* box and type in your desired heading in degrees.



## NAME AN A+ LINE

Select the **Guidance Lines** button and then the **Edit** button. Select the *Give this line a name* box and type in your desired name for your guidance line.



## CONTOUR

Select *Contour* and then the **Set A** button. The **Guidance Lines** button will blink indicating you are recording and you will see your projected line on the screen.

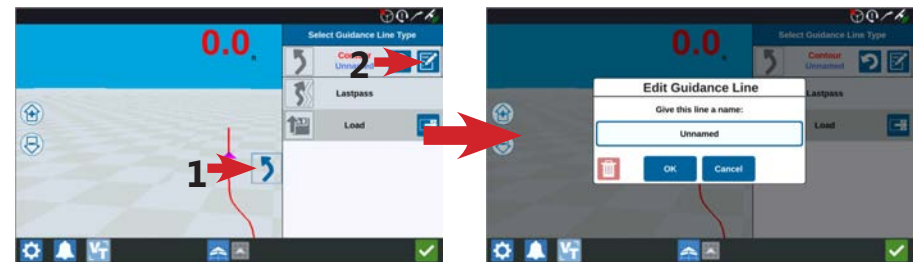


When ready, select the **Set B** button.



## NAME A CONTOUR LINE

Select the **Guidance Lines** button and then the **Edit** button. Select the *Give this line a name* box and type in your desired name for your guidance line.



## LAST PASS

Select *Last Pass*. Last Pass guidance is based on previous coverage in any direction of you (within one swath width). Until you have coverage in your vicinity or you turn back on your coverage, you will not have a guidance line to follow.



Once either condition is met, your Last Pass guidance line will appear. Your next guidance line will adjust based on your current coverage.



Example 1

Example 2

Last Pass guidance on your CR7™ assumes you will always turn back on your previous pass. This assumption allows your Last Pass guidance line to appear sooner. If you use Last Pass guidance for double headland passes, there will be a slight delay for your CR7™ to adjust to your "unexpected" change in driving style.

## LOAD A GUIDANCE LINE

Select the **Guidance Lines** button and then the **Load Guidance Line** button. Select the desired guidance line from memory. **Only the AB style lines can be saved and loaded.**



You can load guidance lines at any time or when you want to switch from one guidance line to another.

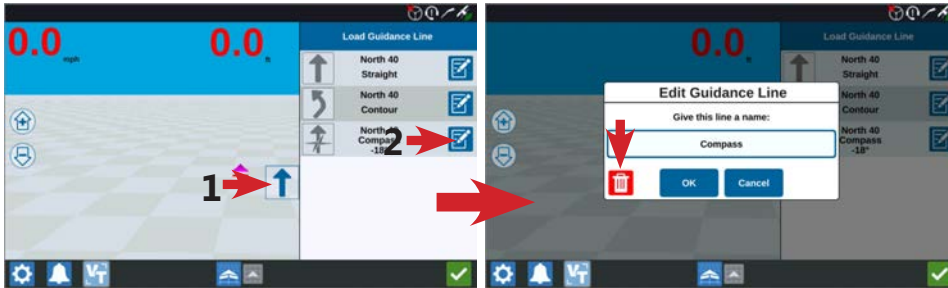
## CLEAR/RESET A GUIDANCE LINE

Select the **Guidance Lines** button and then the **Reset** button. Confirm you want to clear your guidance line.



## DELETE A GUIDANCE LINE (METHOD 1)

Select the **Guidance Lines** button and then the **Edit** button of the line you want to delete. Select the **Delete** button and confirm the deletion.



## DELETE A GUIDANCE LINE (METHOD 2)

Select the **Settings** button from inside or outside of a job and then the **File Manager** button. Select the file type *Guidance Line* and then the line you want to delete. Select the **Delete** button and confirm the deletion.

