

Raven RS1™ MD Guidance and Steering Installation Manual

P/N 016-5030-200 Rev. A

06/17

E29519

Disclaimer

While every effort has been made to ensure the accuracy of this document, Raven Industries assumes no responsibility for omissions and errors. Nor is any liability assumed for damages resulting from the use of information contained herein.

Raven Industries shall not be responsible or liable for incidental or consequential damages or a loss of anticipated benefits or profits, work stoppage or loss, or impairment of data arising out of the use, or inability to use, this system or any of its components. Raven Industries shall not be held responsible for any modifications or repairs made outside our facilities, nor damages resulting from inadequate maintenance of this system.

As with all wireless and satellite signals, several factors may affect the availability and accuracy of wireless and satellite navigation and correction services (e.g. GPS, GNSS, SBAS, etc.). Therefore, Raven Industries cannot guarantee the accuracy, integrity, continuity, or availability of these services and cannot guarantee the ability to use Raven systems, or products used as components of systems, which rely upon the reception of these signals or availability of these services. Raven Industries accepts no responsibility for the use of any of these signals or services for other than the stated purpose.

Table of Contents

Chapter 1	Important Safety Information.....	1
General		2
Instructions for Wire Routing		2
Chapter 2	Introduction.....	5
Preparing for Installation		5
Recommendations		5
Point of Reference		5
Updates		5
Kit Contents		6
Chapter 3	Mechanical Drive Installation.....	11
Disassemble the Mechanical Drive Spline Assembly		11
Remove the Steering Wheel		11
Install the Spline and Ring Gear Assemblies		13
Reinstall the Steering Wheel		16
Install the Anti-Rotation Brackets		17
Install the Mechanical Drive		18
Chapter 4	Cab Component Installation.....	21
Install the RS1 Unit		21
Install the Foot Switch		21
Install the RS1 Cables		22
Install the RS1 Tee Cable		22
Install the RS1 Cable		23
Install the Console Cable		24
Install the Chassis Cable - RS1 MD-Only Systems (If Applicable)		24
Connect RS1 MD to an Existing Chassis Cable (If Applicable)		25
System Diagrams		26

CHAPTER

1

IMPORTANT SAFETY INFORMATION

NOTICE

Read this manual and the operation and safety instructions included with your implement and/or controller carefully before installing the RS1™ MD system.

- Follow all safety information presented within this manual.
- If you require assistance with any portion of the installation or service of your Raven equipment, contact your local Raven dealer for support.
- Follow all safety labels affixed to the RS1 MD system components. Be sure to keep safety labels in good condition and replace any missing or damaged labels. To obtain replacements for missing or damaged safety labels, contact your local Raven dealer.

When operating the machine after installing RS1 MD, observe the following safety measures:

- Be alert and aware of surroundings.
- Do not operate RS1 MD or any agricultural equipment while under the influence of alcohol or an illegal substance.
- Remain in the operator's position or a safe working distance away from the booms at all times when RS1 MD is engaged.
- Disable RS1 MD when exiting from the operator's seat and machine.
- Do not drive the machine with RS1 MD enabled on any public road.
- Determine and remain a safe working distance from other individuals. The operator is responsible for disabling RS1 MD when the safe working distance has diminished.
- Ensure RS1 MD is disabled prior to starting any maintenance work on RS1 MD or the machine.

WARNING

- When starting the machine for the first time after installing RS1 MD, be sure that all persons stand clear in case a hose has not been properly tightened.
- The machine must remain stationary and switched off, with the booms unfolded and supported, during installation or maintenance.

CAUTION

GENERAL

- Always verify that the power leads are connected to the correct polarity as marked. Reversing the power leads could cause severe damage to the equipment.
- Ensure that the power cable is the last cable to be connected.
- A minimum of 12 VDC is required for system operation with a maximum of 15 VDC.

INSTRUCTIONS FOR WIRE ROUTING

The word "harness" is used to mean all electrical leads and cables, bundled and unbundled. When installing harness, secure it at least every 30 cm (12in) to the frame. Follow existing harness as much as possible and use these guidelines:

Harness should not contact or be attached to:

- Lines and hoses with high vibration forces or pressure spikes
- Lines and hoses carrying hot fluids beyond harness component specifications

Avoid contact with any sharp edge or abrading surfaces such as, but not limited to:

- Sheared or flame cut edges
- Edges of machined surfaces
- Fastener threads or cap screw heads
- Ends of adjustable hose clamps
- Wire exiting conduit without protection, either ends or side of conduit
- Hose and tube fittings

Routing should not allow harnesses to:

- Hang below the unit
- Have the potential to become damaged due to exposure to the exterior environment. (i.e. tree limbs, debris, attachments)
- Be placed in areas of or in contact with machine components which develop temperatures higher than the temperature rating of harness components
- Wiring should be protected or shielded if it needs to route near hot temperatures beyond harness component specifications

Harnessing should not have sharp bends

Allow sufficient clearance from machine component operational zones such as:

- Drive shafts, universal joints and hitches (i.e. 3-point hitch)
- Pulleys, gears, sprockets
- Deflection and backlash of belts and chains
- Adjustment zones of adjustable brackets
- Changes of position in RS1 MD and suspension systems
- Moving linkages, cylinders, articulation joints, attachments
- Ground engaging components

For harness sections that move during machine operation:

- Allow sufficient length for free movement without interference to prevent: pulling, pinching, catching or rubbing, especially in articulation and pivot points
- Clamp harnesses securely to force controlled movement to occur in the desired harness section
- Avoid sharp twisting or flexing of harnesses in short distances
- Connectors and splices should not be located in harness sections that move

Protect harnesses from:

- Foreign objects such as rocks that may fall or be thrown by the unit
- Buildup of dirt, mud, snow, ice, submersion in water and oil
- Tree limbs, brush and debris
- Damage where service personnel or operators might step or use as a grab bar
- Damage when passing through metal structures

IMPORTANT:

- Avoid directly spraying electrical components and connections with high pressure water. High pressure water sprays can penetrate seals and cause electrical components to corrode or otherwise become damaged. When performing maintenance:
- Inspect all electrical components and connections for damage or corrosion. Repair or replace components, connections, or cable as necessary.
- Ensure connections are clean, dry, and not damaged. Repair or replace components, connections, or cable as necessary.
- Clean components or connections using low pressure water, pressurized air, or an aerosol electrical component cleaning agent.
- Remove visible surface water from components, connections, or seals using pressurized air or an aerosol electrical component cleaning agent. allow components to dry completely before reconnecting cables.

Congratulations on your purchase of the RS1™ MD system!

The following instructions are designed to assist with the proper installation of the RS1 MD system. Refer to the RS1 Calibration & Operation Manual (P/N 016-4010-001) for assistance with calibrating the software and using the RS1 MD system.

PREPARING FOR INSTALLATION

Before installing the RS1 MD system, park the machine where the ground is level, clean, and dry. Turn off the machine and leave it turned off for the duration of the installation process.

During the installation process, follow good safety practices. Be sure to carefully read the instructions in this manual as you complete the installation process.

RECOMMENDATIONS

Raven Industries recommends the following best practices when installing or operating the RS1 MD system for the first time, at the start of the season, or when moving the RS1 MD system to another machine:

- Install the RS1 unit in the recommended location.
- Use part numbers to identify the parts.
- Do not remove the plastic wrap from a part until it is necessary for installation.
- Do not remove plastic caps from a part until it is necessary for installation.

POINT OF REFERENCE

The instructions in this manual assume that you are standing behind the machine, looking toward the cab.

UPDATES

Software and manual updates are available on the Raven Applied Technology website:

<http://www.ravenhelp.com>

At Raven Industries, we strive to make your experience with our products as rewarding as possible. One way to improve this experience is to provide us with feedback on this manual.

Your feedback will help shape the future of our product documentation and the overall service we provide. We appreciate the opportunity to see ourselves as our customers see us and are eager to gather ideas on how we have been helping or how we can do better.

To serve you best, please send an email with the following information to

techwriting@ravenind.com

- Raven RS1™ MD Guidance and Steering Installation Manual
- P/N 016-5030-200 Rev. A
- Any comments or feedback (include chapter or page numbers if applicable).
- Let us know how long have you been using this or other Raven products.

We will not share your email or any information you provide with anyone else. Your feedback is valued and extremely important to us.

Thank you for your time.

KIT CONTENTS

This section contains a list of the components that are included in the RS1 MD kit. Before beginning the system installation, compare the items in the kit with the components on this list. If you have questions about the kit, contact your Raven dealer..

TABLE 1. RS1 MD Installation Kit (P/N 117-5030-200 or 117-5030-201)

Item Description	Part Number	Qty.
Manual - Raven RS1 MD Guidance and Steering Installation	016-5030-200	1
Assembly - Ring Gear	063-4001-011	1
Assembly - Spline Adapter	063-4001-014 or 063-4001-015	1
Trim - Ring Gear Protective	019-0159-590	1
Assembly - Telescope Adapter (Kit 115-5030-200 Only)	063-4001-017	1
Bracket - U-Shaped with Flange	107-4001-012	1

TABLE 1. RS1 MD Installation Kit (P/N 117-5030-200 or 117-5030-201)

Item Description	Part Number	Qty.
Bracket - L-Shaped	107-4001-013	1
Bearing - 1/2" Plastic Flanged	325-0000-036	1
Clamp - 4" Strap	321-0000-422	2
Bolt - #10-24 x 3/4" UNC Zinc Carriage	311-0069-082	2
Bolt - 5/16"-18 x 3/4" Grade 2 Zinc Carriage	311-0069-111	2
Nut - 5/16"-18 Zinc Flanged Lock	312-1001-184	2
Nut - #10-24 Wing	312-3000-013	2

TABLE 2. RS1 MD Controller Kit (P/N 117-5030-197)

Item Description	Part Number	Qty.
Assembly - Mechanical Drive (MD) Unit	063-4001-010	1
Cable - RS1 MD 15' Tee Adapter	115-4010-004	1
Cable - RS1 MDU Harness	115-4010-008	1
Pin - Anti-Rotation	107-4001-004	1
Switch - Foot	063-0172-470	1



TABLE 3. RS1 Unit Kit

Item Description	Part Number	Qty.
Manual - RS1 Operation	016-4010-001	1
Unit - RS1	063-0173-820, 063-0173-921, or 063-0173-922	1

CHAPTER

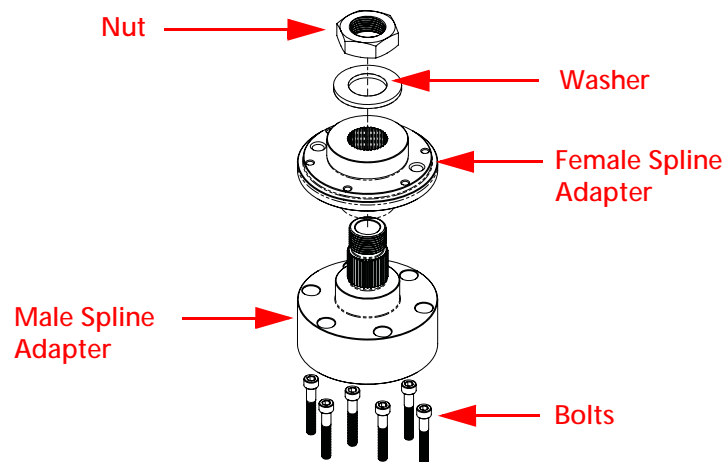
3

MECHANICAL DRIVE INSTALLATION

NOTE: The installation instructions contained in this manual may vary slightly from the steps required to install RS1 MD on various machine models.

DISASSEMBLE THE MECHANICAL DRIVE SPLINE ASSEMBLY

FIGURE 1. Spline Assembly Disassembled



1. Locate the spline adapter assembly (P/N 063-4001-014 or 063-4001-015).
2. Disassemble the spline adapter assembly as shown in Figure 1 above.

REMOVE THE STEERING WHEEL

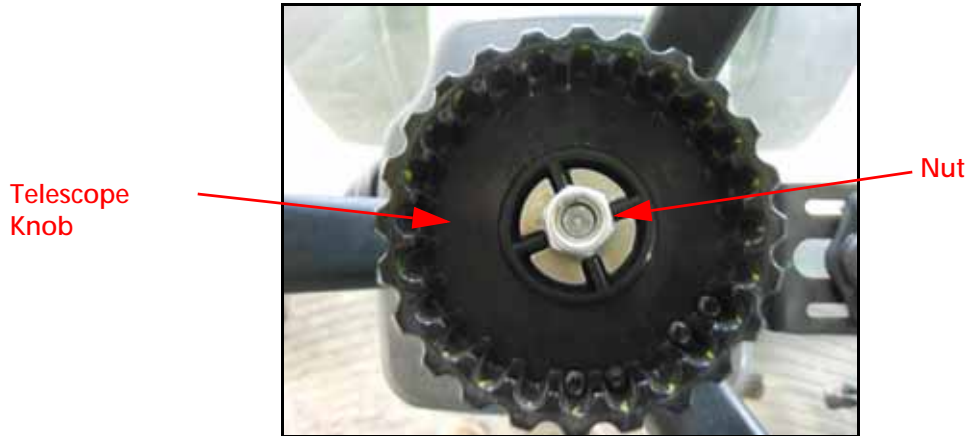
NOTE: The steps in this section require use of a steering wheel puller (not supplied). For questions on the proper procedure for removing the steering wheel, contact your local equipment dealer.

FIGURE 2. Steering Wheel Cap



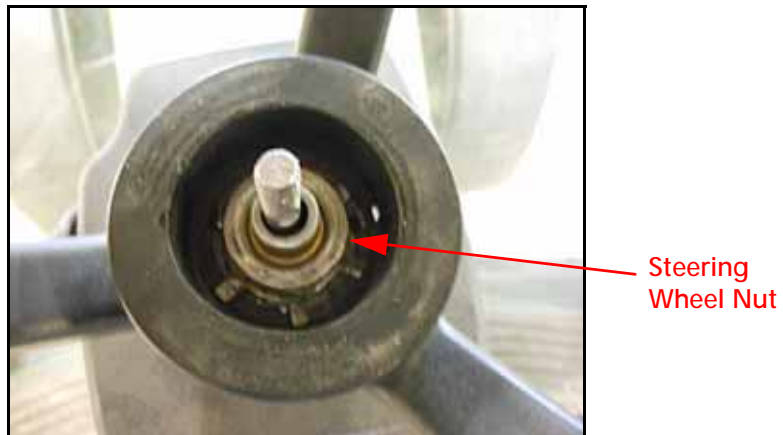
1. Remove the cap from the center of the steering wheel.

FIGURE 3. Telescope Knob and Nut to Be Removed



2. Remove the nut used to secure the telescope knob (if applicable).

FIGURE 4. Machine's Telescope Knob Removed



3. Remove the telescope knob (if applicable).

4. Remove the nut used to secure the steering wheel to the steering column.

FIGURE 5. Steering Wheel Removed



5. Using the steering wheel puller, remove the steering wheel from the steering column.

INSTALL THE SPLINE AND RING GEAR ASSEMBLIES

FIGURE 6. Female Spline Adapter Installed on Steering Column



1. Install the female spline on the machine's steering column.

FIGURE 7. Machine's Steering Wheel Nut Installed



2. Install the machine's steering wheel nut that was removed in step 4 of the Remove the Steering Wheel section on page 11 over the installed telescope and female spline adapter.

FIGURE 8. Ring Gear Assembly Installed



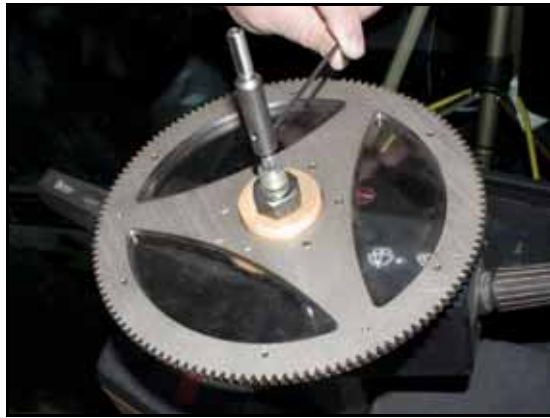
3. Place the ring gear assembly over the female spline adapter with the black ring facing down and the holes in the ring gear aligned with the holes in the female spline adapter.

FIGURE 9. Telescope Adapter Assembly Installed (If Applicable)



4. **7/8" Spline Adapter Only** - Install the telescope adapter assembly (P/N 063-4001-017) on the machine's telescope rod aligning the set screws with the flat part of the stem.

FIGURE 10. Telescope Set Screws



5. **7/8" Spline Adapter Only** - Tighten the set screws in the telescope adapter assembly.

FIGURE 11. Male Spline Adapter Assembly Installed



6. Align the bolts holes in the male spline assembly with the holes in the ring gear assembly.
7. Install the male spline assembly on the installed mechanical drive telescope adapter assembly.

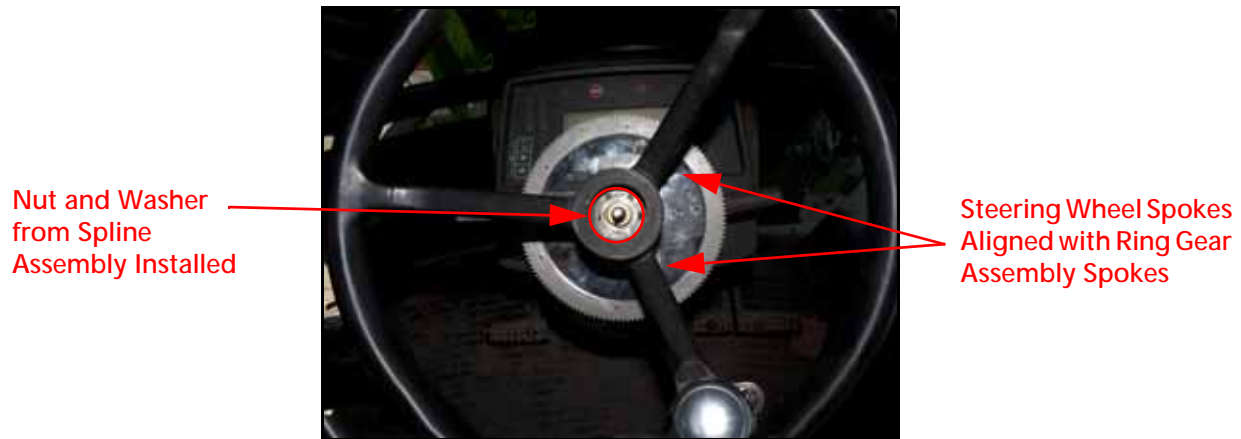
FIGURE 12. Spline Assembly Bolts Installed



8. Install and tighten the spline assembly bolts to secure the male spline adapter to the ring gear and female spline adapters.

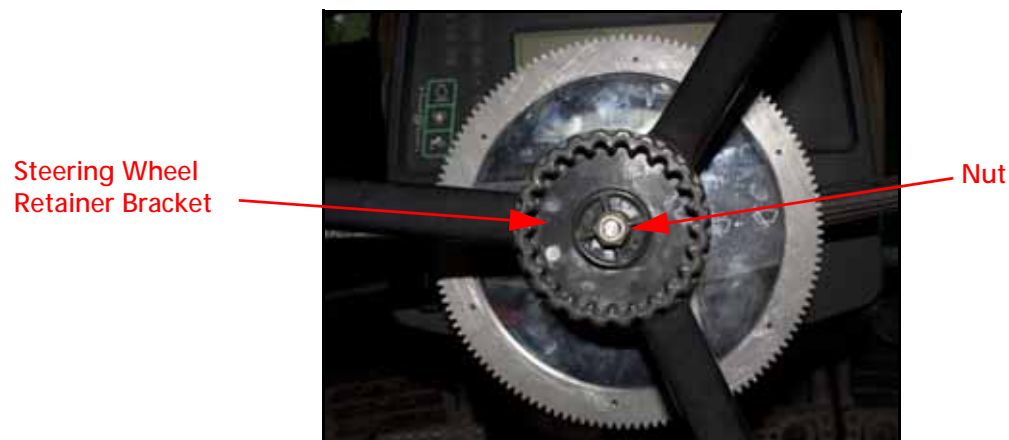
REINSTALL THE STEERING WHEEL

FIGURE 13. Steering Wheel Placement



1. Align the spokes of the machine's steering wheel with the spokes on the installed ring gear assembly.
2. Install the steering wheel on the male spline adapter.
3. Install the washer and nut on the protruding male spline adapter.

FIGURE 14. Telescope Knob and Nut Reinstalled



4. Reinstall the machine's steering wheel telescope knob.
5. Reinstall the nut that was removed in step 2 of the Remove the Steering Wheel section on page 11 on the protruding telescope adapter (P/N 063-4001-017).

FIGURE 15. Steering Wheel Cap Reinstalled



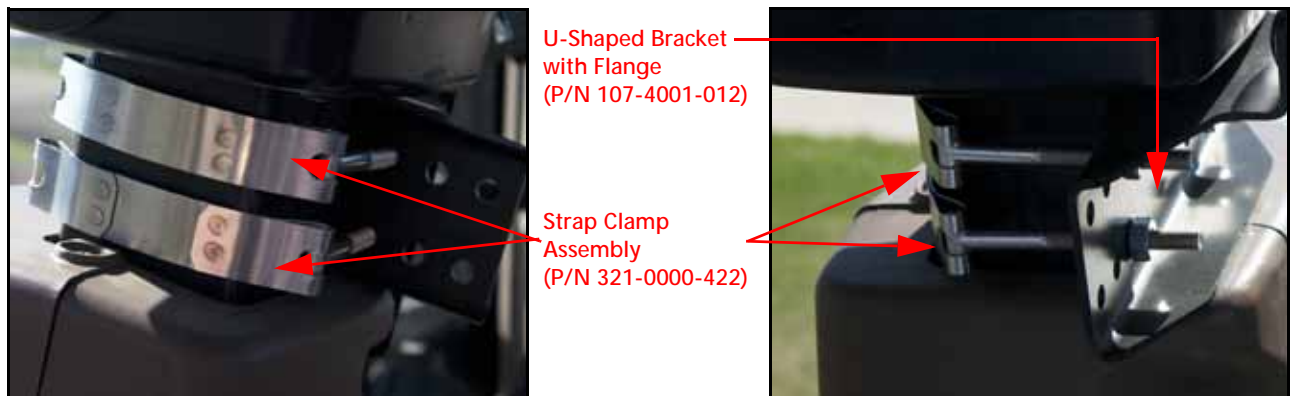
6. Replace the steering wheel cap.

INSTALL THE ANTI-ROTATION BRACKETS

1. Identify the anti-rotation bracket mounting location on the narrow section of the steering column.

NOTE: Depending on the machine's configuration, the anti-rotation bracket may be installed on the left or right side.

FIGURE 16. U-Shaped Bracket Installation



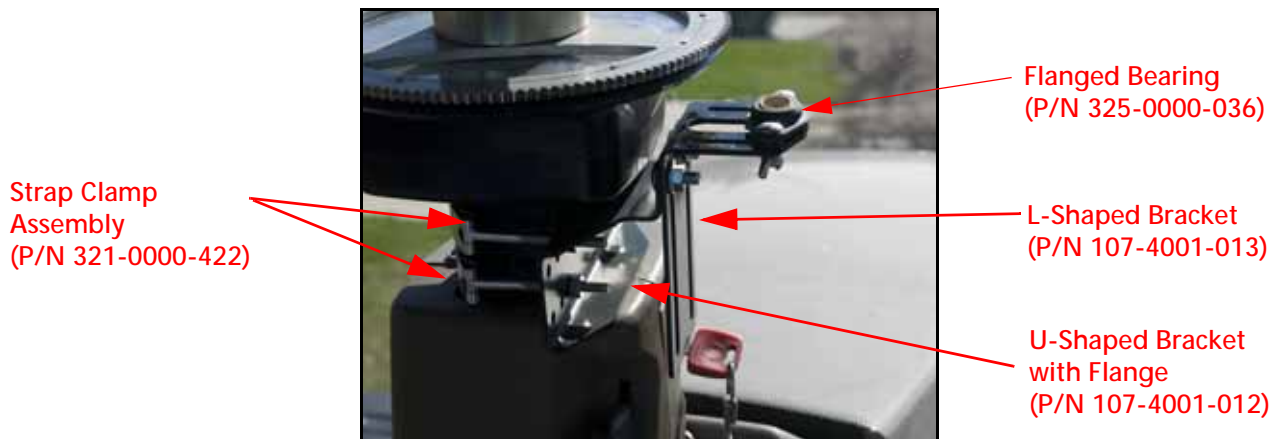
2. Secure the U-shaped bracket (P/N 107-4000-012) to the steering column using the two 4" strap clamp assemblies (P/N 321-0000-422) and supplied nuts.
3. Tighten the nuts to ensure the bracket is installed securely.

FIGURE 17. Flanged Bearing Assembly Installed



4. Install the 1/2" plastic flanged bearing (P/N 325-0000-036) on the short leg of the L-shaped bracket (P/N 107-4000-013) using two #10-24 wing nuts (P/N 312-3000-013).

FIGURE 18. L-Shaped Bracket Installed



5. Secure the L-shaped bracket to the installed U-shaped bracket using two 5/16"-18 x 3/4" carriage bolts (P/N 311-0069-111) and two 5/16"-18 zinc flanged lock nuts (P/N 312-1001-184).

INSTALL THE MECHANICAL DRIVE

NOTE: Depending on the machine's configuration, it may be necessary to install the anti-rotation pin in the mechanical drive's casing after the mechanical drive is installed instead of before as indicated in the instructions below.

FIGURE 19. Anti-Rotation Pin Installation Locations



1. Determine the anti-rotation pin (P/N 107-4001-004) installation location on the mechanical drive (P/N 063-4001-010) based on the anti-rotation bracket installation location.
2. Screw the anti-rotation pin into the mechanical drive's casing.

FIGURE 20. Anti-Rotation Pin Installed in Bracket Assembly



3. Insert the anti-rotation pin into the installed flanged bearing (P/N 325-0000-036) on the anti-rotation bracket assembly.

FIGURE 21. Mechanical Drive Installed



4. Install the mechanical drive around the installed ring gear assembly, closing it firmly until the latch on the casing is securely locked.
5. Tighten all nuts to ensure the anti-rotation bracket assembly is installed securely.

CHAPTER

4

CAB COMPONENT INSTALLATION

INSTALL THE RS1 UNIT

Contact your local Raven dealer with any questions regarding the RS1 roof mounting kit ordering or installation.

INSTALL THE FOOT SWITCH

FIGURE 1. Foot Switch Installed



1. Select a suitable location for the foot switch (P/N 063-0172-470) to be installed.

NOTE: The foot switch should be installed in a location where the operator has easy access to it and is able to fully press the pedal.

2. Using the holes in the foot switch as a template, drill holes in the floor of the cab.
3. Secure the foot switch to the floor using the supplied screws in each of the mounting holes.

INSTALL THE RS1 CABLES

INSTALL THE RS1 TEE CABLE

FIGURE 2. RS1 Cable Connection



1. Connect the black 12-pin connector of the RS1 tee cable (P/N 115-4010-004) to the back of the RS1 unit.
2. Route the cable into the cab.

FIGURE 3. 15' RS1 Tee Cable Connected to Machine's Power Cable



3. Connect the round 21-pin connector of the RS1 tee cable to the mating 21-pin connector of the chassis power cable.

INSTALL THE RS1 CABLE

FIGURE 4. RS1 Tee Cable Connected to RS1 MD Cable



1. Connect the gray 12-pin connector of the RS1 tee cable (P/N 115-4010-004) to the mating 12-pin connector of the RS1 MD cable (P/N 115-4010-008).
2. Connect the ENABLE connector of the RS1 MD cable (P/N 115-4010-008) to the cable of the installed foot switch (P/N 063-0172-470).

FIGURE 5. Mechanical Drive Connection



3. Connect the 8-pin Deutsch connector from the RS1 MD cable into the 8-pin port of the mechanical drive (P/N 063-4001-010).

INSTALL THE CONSOLE CABLE

FIGURE 6. RS1 MD Connected to Console Cable



1. Connect the round 21-pin connector of the RS1 MD cable (P/N 115-4010-008) to the mating 21-pin console cable (P/N 115-7300-136 or 115-7300-107).

FIGURE 7. Console Cable Connected to Console



2. Connect the cable connectors to the back of the console.

INSTALL THE CHASSIS CABLE - RS1 MD-ONLY SYSTEMS (IF APPLICABLE)

If the machine does not contain an existing chassis power system (such as AutoBoom, product control, etc.), it is necessary to install the chassis power cable to operate the RS1 MD system. If a CAN system already exists on the machine, refer to Connect RS1 MD to an Existing Chassis Cable (If Applicable) below to connect power to the RS1 MD system.

NOTE: The chassis cable is sold separately. Contact your local Raven dealer for ordering information.

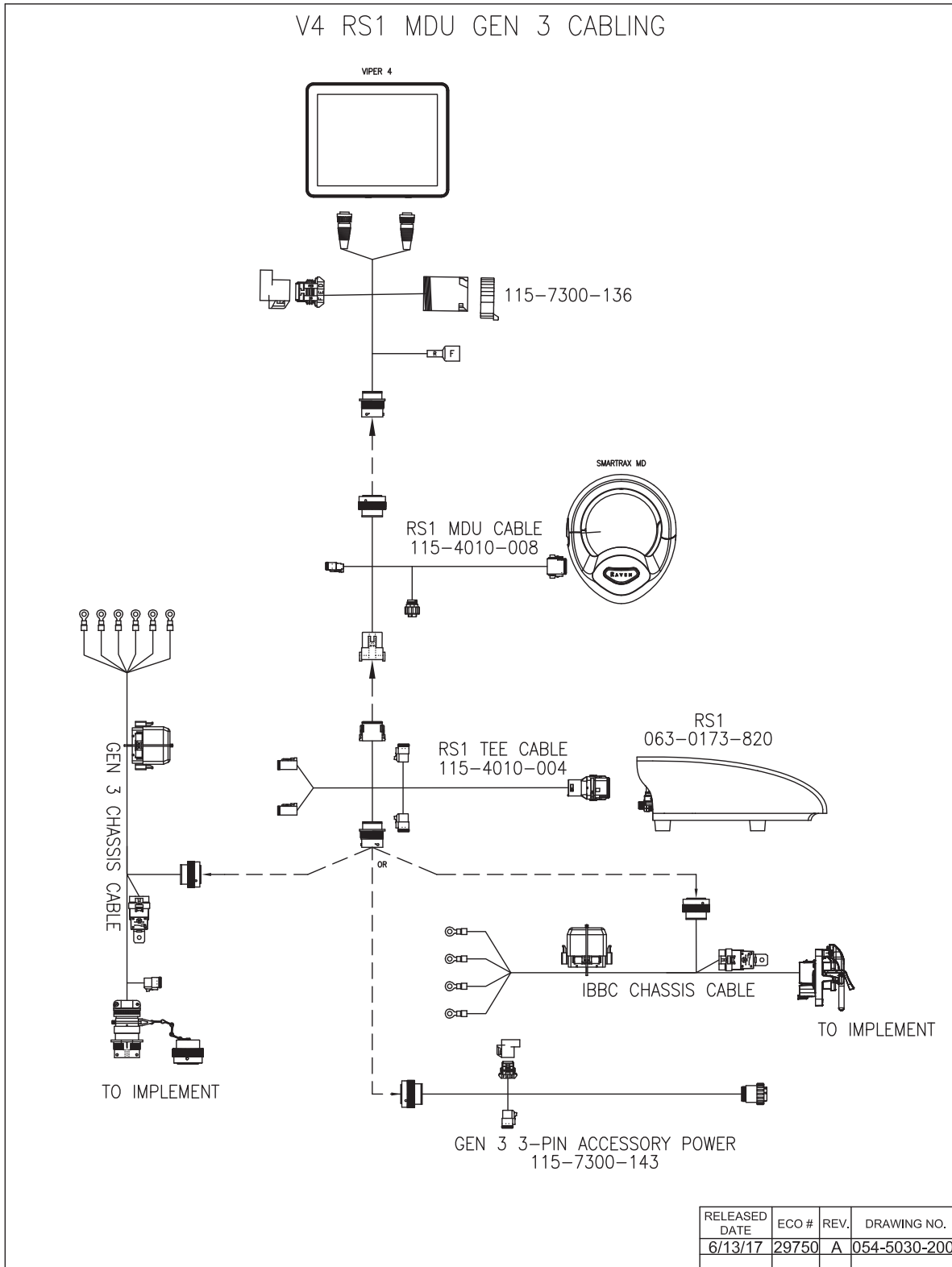
1. Locate the RS1 chassis cable (P/N 115-7300-141).
2. Connect the TO CAB CABLE connector to the 21-pin connector of the RS1 tee cable (P/N 115-4010-004).

3. Connect the ring terminals to the battery.

CONNECT RS1 MD TO AN EXISTING CHASSIS CABLE (IF APPLICABLE)

1. Disconnect the 21-pin connector of the chassis harness from the 21-pin connector of the console cable.
2. Connect the 21-pin connector of the chassis harness to the 21-pin connector of the RS1 tee cable (P/N 115-4010-004).
3. Connect the 21-pin connector of the console cable to the 21-pin connector of the RS1 MD tee cable (P/N 115-4010-008).

SYSTEM DIAGRAMS



C

- Cab Component Installation** 21, 26
 - Connecting RS1 MD to an Existing Chassis Cable 25
 - Installing the Chassis Cable - RS1 MD-Only Systems 24
 - Installing the Foot Switch 21
 - Installing the RS1 Cables 22
 - Installing the Console Cable 24
 - Installing the RS1 Cable 23
 - Installing the RS1 Tee Cable 22
 - Installing the RS1 Unit 21

I

- Important Safety Information**
 - Electrical Safety
 - General 2
 - Instructions for Wire Routing 2
- Introduction** 5
 - Kit Contents 6
 - Preparing for Installation 5
 - Point of Reference 5
 - Recommendations 5
 - Updates 5

K

- Kit Contents** 6

M

- Mechanical Drive Installation** 11
 - Disassembling the Mechanical Drive Spline Assembly 11
 - Installing the Anti-Rotation Brackets 17
 - Installing the Mechanical Drive 18
 - Installing the Spline and Ring Gear Assemblies 13
 - Reinstalling the Steering Wheel 16
 - Removing the Steering Wheel 11

RAVEN

Limited Warranty

What Does this Warranty Cover?

This warranty covers all defects in workmanship or materials in your Raven Applied Technology Division product under normal use, maintenance, and service when used for intended purpose.

How Long is the Coverage Period?

Raven Applied Technology products are covered by this warranty for 12 months from the date of retail sale. In no case will the Limited Warranty period exceed 24 months from the date the product was issued by Raven Industries Applied Technology Division. This warranty coverage applies only to the original owner and is non-transferable.

How Can I Get Service?

Bring the defective part and proof of purchase to your Raven dealer. If the dealer approves the warranty claim, the dealer will process the claim and send it to Raven Industries for final approval. The freight cost to Raven Industries will be the customer's responsibility. The Return Materials Authorization (RMA) number must appear on the box and all documentation (including proof of purchase) must be included inside the box to be sent to Raven Industries.

What Will Raven Industries Do?

Upon confirmation of the warranty claim, Raven Industries will (at our discretion) repair or replace the defective product and pay for the standard return freight, regardless of the inbound shipping method. Expedited freight is available at the customer's expense.

What is not Covered by this Warranty?

Raven Industries will not assume any expense or liability for repairs made outside our facilities without written consent. Raven Industries is not responsible for damage to any associated equipment or products and will not be liable for loss of profit, labor, or other damages. The obligation of this warranty is in lieu of all other warranties, expressed or implied, and no person or organization is authorized to assume any liability for Raven Industries.

Damages caused by normal wear and tear, misuse, abuse, neglect, accident, or improper installation and maintenance are not covered by this warranty.



Extended Warranty

What Does this Warranty Cover?

This warranty covers all defects in workmanship or materials in your Raven Applied Technology Division product under normal use, maintenance, and service when used for intended purpose.

Do I Need to Register My Product to Qualify for the Extended Warranty?

Yes. Products/systems must be registered within 30 days of retail sale to receive coverage under the Extended Warranty. If the component does not have a serial tag, the kit it came in must be registered instead.

Where Can I Register My Product for the Extended Warranty?

To register, go online to www.ravenhelp.com and select Product Registration.

How Long is the Extended Warranty Coverage Period?

Raven Applied Technology products that have been registered online are covered for an additional 12 months beyond the Limited Warranty for a total coverage period of 24 months from the date of retail sale. In no case will the Extended Warranty period exceed 36 months from the date the product was issued by Raven Industries Applied Technology Division. This Extended Warranty coverage applies only to the original owner and is non-transferable.

How Can I Get Service?

Bring the defective part and proof of purchase to your Raven dealer. If the dealer approves the warranty claim, the dealer will process the claim and send it to Raven Industries for final approval. The freight cost to Raven Industries will be the customer's responsibility. The Return Materials Authorization (RMA) number must appear on the box and all documentation (including proof of purchase) must be included inside the box to be sent to Raven Industries. In addition, the words "Extended Warranty" must appear on the box and all documentation if the failure is between 12 and 24 months from the retail sale.

What Will Raven Industries Do?

Upon confirmation of the product's registration for the Extended Warranty and the claim itself, Raven Industries will (at our discretion) repair or replace the defective product and pay for the standard return freight, regardless of the inbound shipping method. Expedited freight is available at the customer's expense.

What is Not Covered by the Extended Warranty?

Raven Industries will not assume any expense or liability for repairs made outside our facilities without written consent. Raven Industries is not responsible for damage to any associated equipment or products and will not be liable for loss of profit, labor, or other damages. Cables, hoses, software enhancements, and remanufactured items are not covered by this Extended Warranty. The obligation of this warranty is in lieu of all other warranties, expressed or implied, and no person or organization is authorized to assume any liability for Raven Industries.

Damages caused by normal wear and tear, misuse, abuse, neglect, accident, or improper installation and maintenance are not covered by this warranty.