
CR7 INSTALLATION GUIDE

This guide provides an overview of CR7 field computer connections as well as drawings that illustrate the cab connections for various machine configurations.

IMPORTANT SAFETY INFORMATION

This is a safety-alert symbol. When you see the symbol below on the device, be alert because there is the potential for personal injury.



Follow the recommended precautions and safe operating practices.

CR7 CONNECTIONS

The image below shows the connections on the back of the CR7 that will be used for installation. Please note that, depending on machine configuration, some of these connections may not be used.

FIGURE 1. Back of CR7



WIRING ILLUSTRATIONS

The illustrations on the next few pages show CR7 wiring diagrams for various cabling generations with optional accessories and are for reference only.

FIGURE 3. Gen II Cabling CR7 SmarTrax/AccuBoom Only

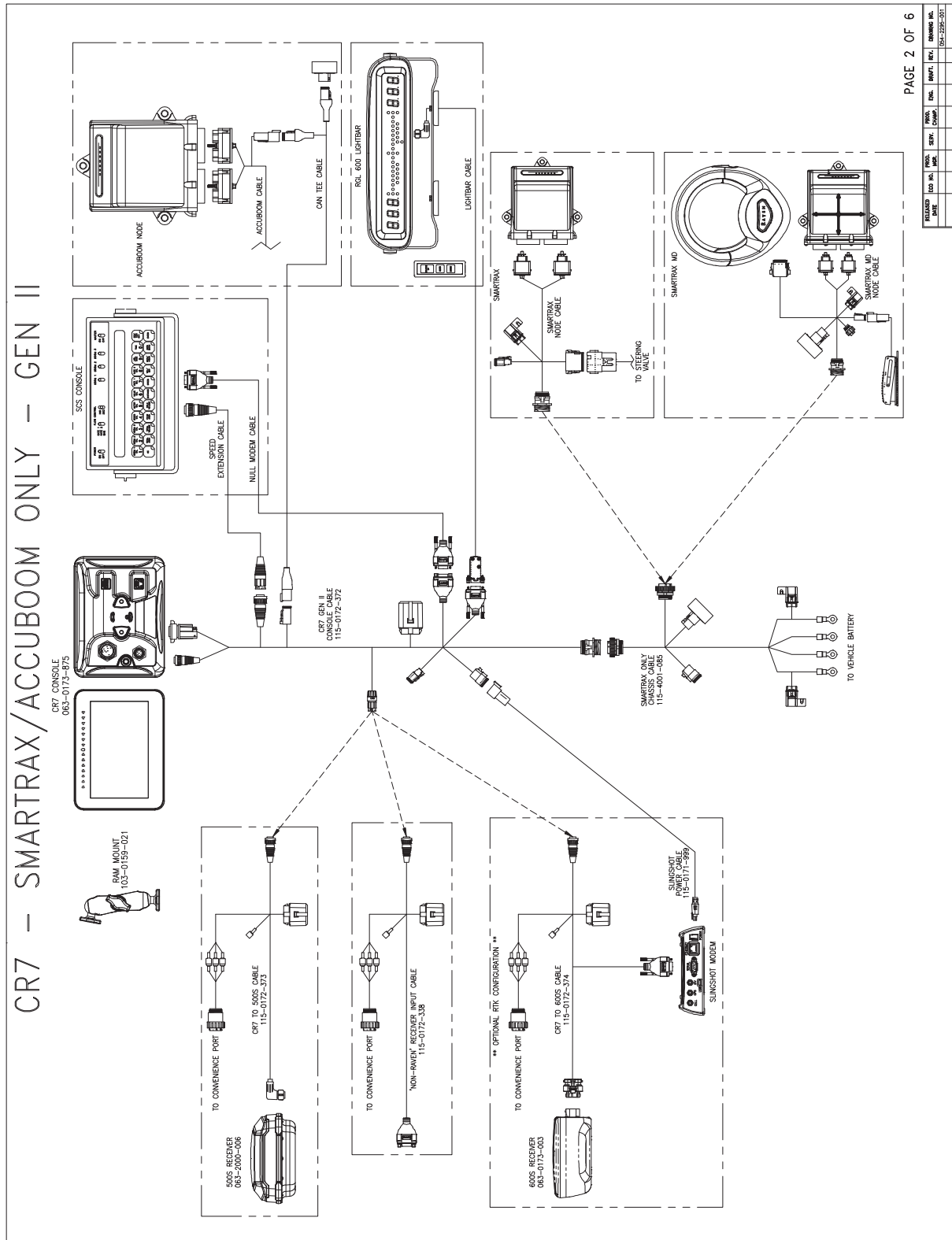


FIGURE 4. Full Gen II Cabling CR7 SmarTrax/AccuBoom

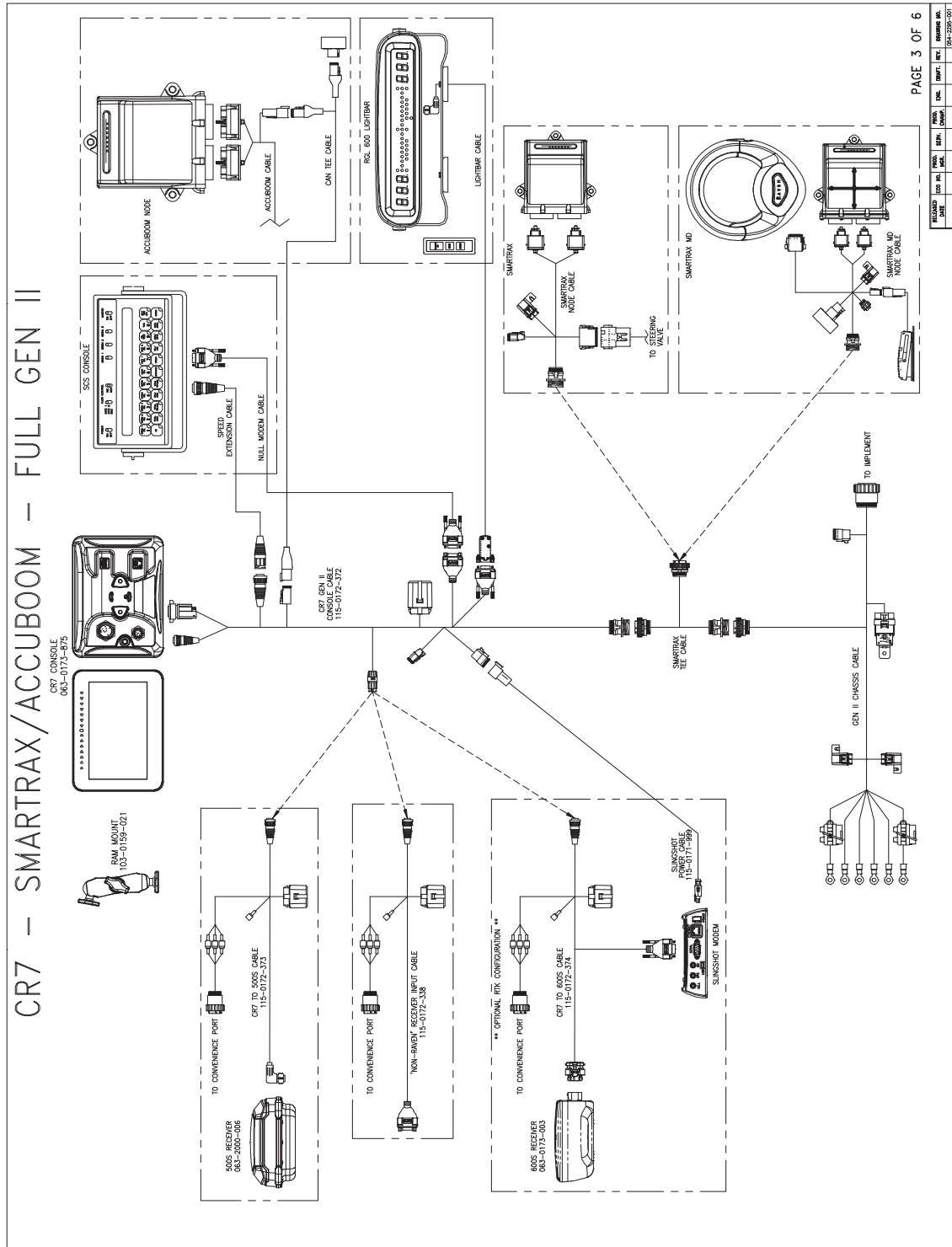


FIGURE 7. Gen 3 or IBBC Cabling CR7 RS1/ISO Product Control

