

SCS Control Consoles Software Update Details

Version: 1.90-4000/4070/5000

Release Date: 12/15/10

Download this update only if the version you are presently using is less than 1.90.

NOTE: If you have version 1.80 or earlier, this upgrade is recommended.

Download and Installation Instructions

Connect the 9-pin serial connector on the console cable to the 9-pin serial connection on a computer using a 9-pin Null Modem Cable* (Raven part number 115-0171-395, (*Note that a standard serial cable will not work.) For computers without a serial port, a USB-serial adapter is required (Raven part number 524-0002-063, or available from most electronics suppliers) in addition to the Null Modem Cable.



Download the newest firmware available for your console. Save the file to the desktop of your computer. Note: you must use an unzipping utility to uncompress (or unzip) the downloaded file before it will work correctly.

Once the file has been downloaded, saved, and unzipped, open the unzipped folder named SCS4000_4070_5000_1_90

Open the HyperTerminal program, which will be named SCS 4000 Update.ht. Your computer may ask you if you want to make HyperTerminal your default tel-net program. Click No.

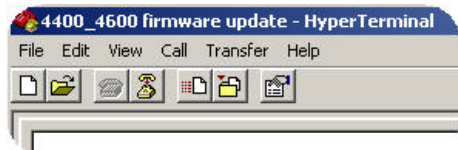
Once the HyperTerminal program is open, power up the console and prepare it for the firmware update.

Press the DATA MENU button until CONSOLE is highlighted in the lower left corner of the display.

Press the up/down arrow button until PGM UPDATE is highlighted, then press the ENTER key. A warning message is displayed to ensure you have a Null Modem cable connected to the console cable and the computer (or a USB-serial adapter). Press ENTER again.

The console should now display: LOOKING FOR DATA TO FLASH IC WITH.

On the computer in the HyperTerminal program, click on Transfer then Send Text File.



Another small window will then open. Choose and open the text file named SCS4000_4070_5000 Rev 1_90.txt.

Once the update starts, the console will display the current line number of the file that is being sent to the console as well as the total number of lines of text to be sent. The update may take anywhere from 5-20 minutes depending on the computer.

Once the update is complete, the console will turn itself off. The update is now complete.

Close the HyperTerminal program and disconnect the Null Modem Cable or USB-serial adapter.

Release Notes

New diagnostic and setup screens for use with Sidekick Pro

New setup screens for use with AccuFlow HP

PSI or RPM will display next to the product it is associated with on the main run screen

Speed data will now save in data log files